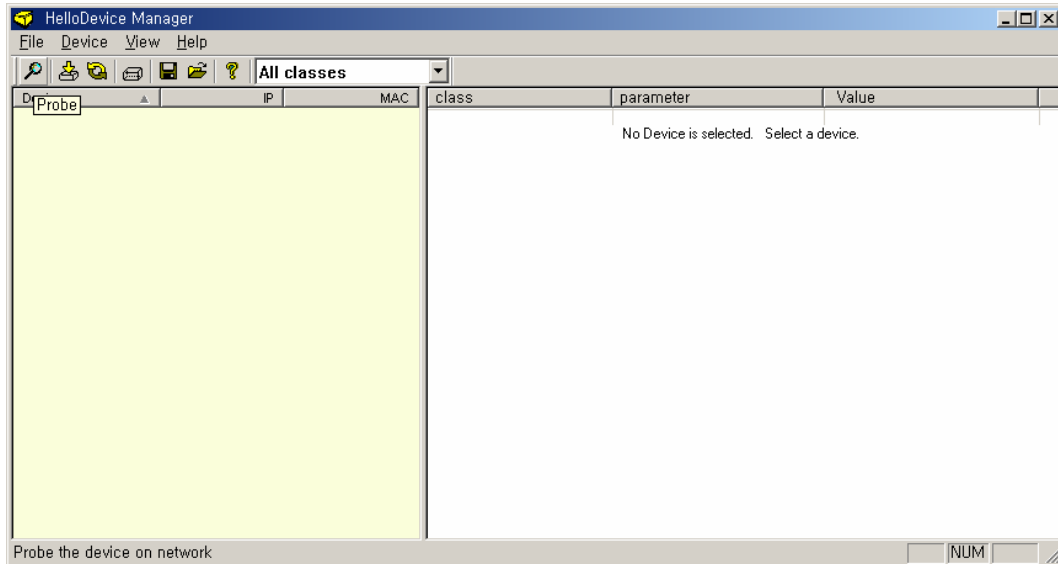


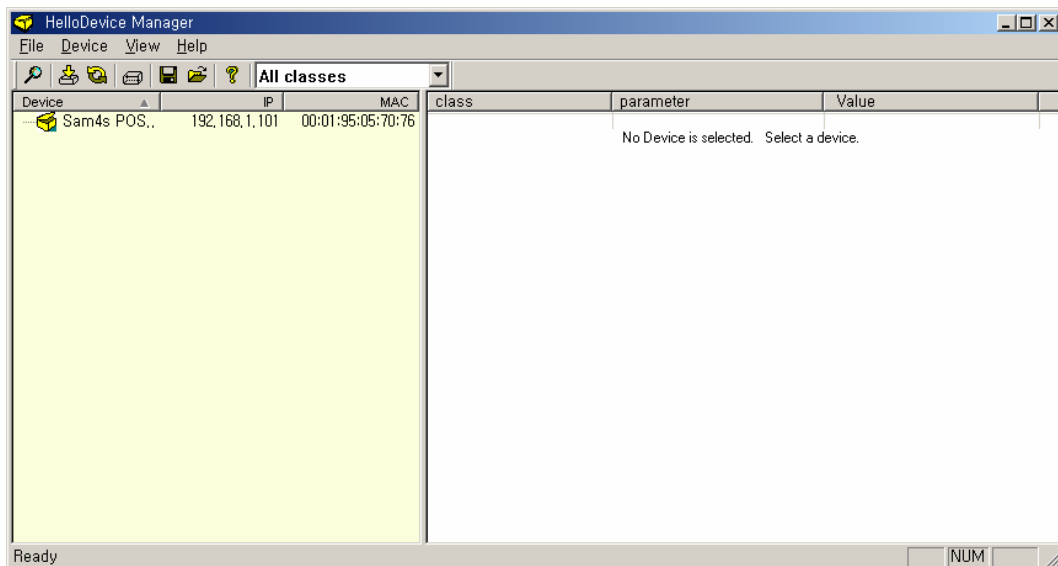
## Usage of ELLIX20 Ethernet Interface – 03/16/2006

### 1. Device Configuration.

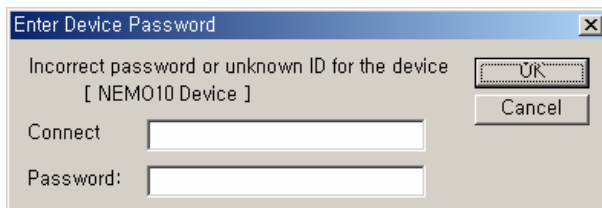
1. Install the “HelloDevice Manager” to your PC.
2. And execute the “HelloDevice Manager” after connect the PC to ELLIX20 by correct cable.(Crossed RX and TX signal line cable or Direct connected cable)



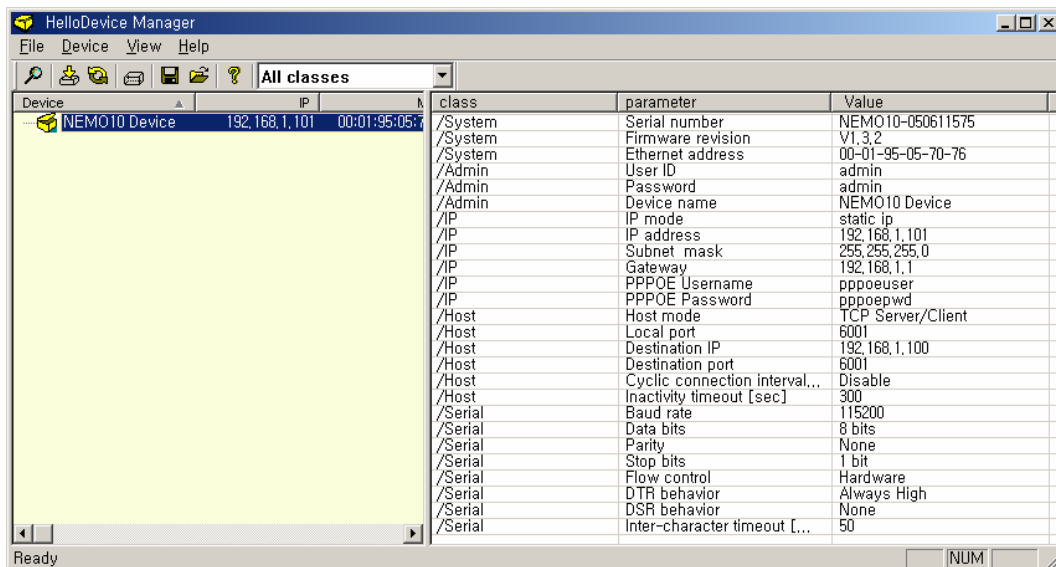
3. You can find the connected device by “Device->Probe” menu click.



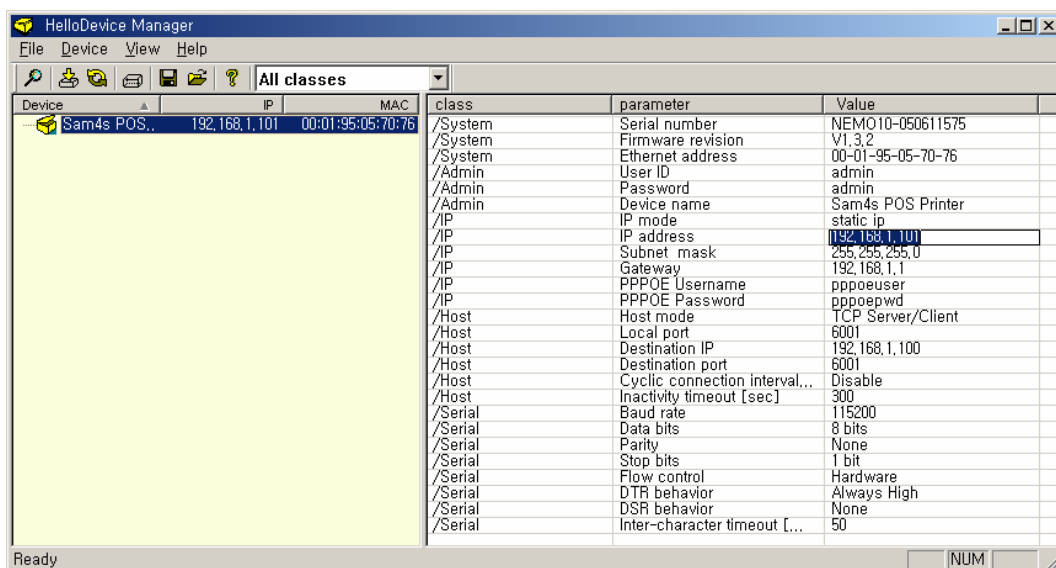
4. Select the “Sam4s POS Printer” on the device window.



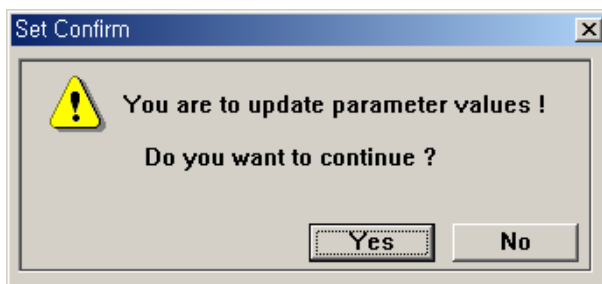
5. If you connect device in first time, default Connect and Password is all “admin”.  
It is can change to next step.



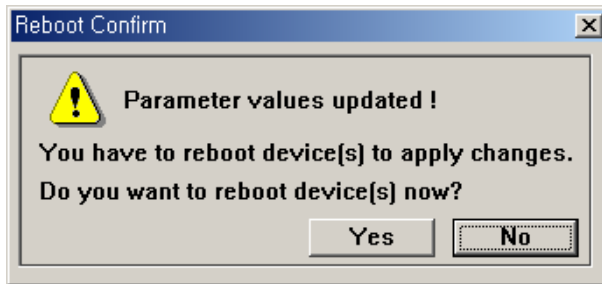
6. You can change the setting value by click value on the right side of window.



7. After changing the configuration, please perform “Device->Set” operation to download the configuration to your device.  
8. Click “Yes” button for confirm the change value.



9. Click "Yes" button for reboot device(update device).



10. Click "Yes" button to finish the configuration update.

