
SAM4s ER-390M Series

PC Utility User's Manual



Version 1.0

All specifications are subject to change without notice.

©2006, CCR

Contents

Introduction	3
About the ER-390M PC Utility	3
Getting Started	5
Setting the ER-390M RS-232C Port	5
Preparing the ER-390M for Communications	7
Installing the Utility	7
Starting the PC Utility	8
Store Settings	9
Upload/Download Programs	11
UpProgram	11
DownProgram	12
Edit Programs	13
Procedures	13
Program Edit Screens	14
Reports	21
Poll Reports	21
View Reports	22
Prepare & Load Bitmap Logos	25
Preparing a Graphic Logo Bitmap for an ER-390M	25
Download a Graphic Logo to an ER-390M	26
Printing the Logo Image – ER-390M Settings	27
Appendix	29
Cabling Diagrams	29

Introduction

About the ER-390M PC Utility

The ER-390M Series PC Utility provides basic PC communication functions for Sam4s ER-390M. This utility was designed primarily as a dealer tool - to save, edit, and download programs.

The ER-390M Series PC Utility includes the following features:

- Multiple Stores
- Save and Load ECR programs
- Convert & Download Logo Bitmaps
- Edit ECR programs
- Poll and View Register Reports
- Remote Modem Communication Capability

Note: The ER-390M Series PC Utility was developed to work best with a screen resolution of at least 1024 x 768 pixels.

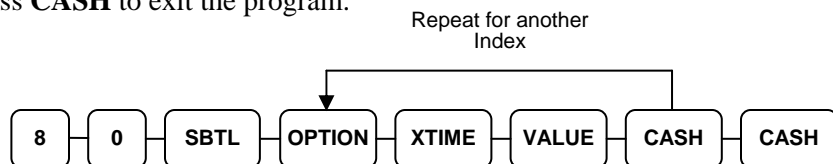
Getting Started

Setting the ER-390M RS-232C Port

At the ER-390M, you must select 'PC' as the device that is attached to one of the RS-232C communications port.

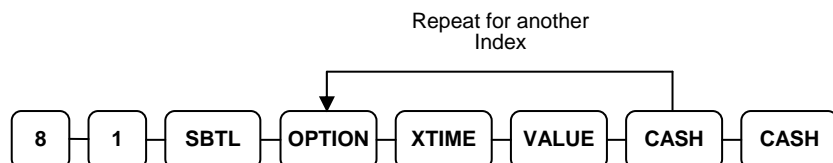
If you are using RS-232C Port #1:

1. Turn the control lock to the **S** position.
2. Enter **8 0** and press the **SBTL** key.
3. Enter **5** and press the **X/TIME** key. (Refer to the RS-232C option chart that follows.)
4. Enter **1** (the value for PC) and press the **CASH** key.
5. Press **CASH** to exit the program.



If you are using RS-232C Port #2:

1. Turn the control lock to the **S** position.
2. Enter **8 1** and press the **SBTL** key.
3. Enter **5** and press the **X/TIME** key. (Refer to the RS-232C option chart that follows.)
4. Enter **1** (the value for PC) and press the **CASH** key.
5. Press **CASH** to exit the program.



RS-232 Option Chart

Address	Option	Value	Selection
1	Baud Rate	0	9600 BPS
		1	1200 BPS
		2	2400 BPS
		3	4800 BPS
		4	19200 BPS
2	Parity	0	NONE
		1	ODD
		2	EVEN
3	Data Bits	0	8 BITS
		1	7 BITS
4	Stop Bits	0	1 BIT
		1	2 BIT
5	Device Function	0	NONE
		1	PC
		2	SCALE
		3	Remote Journal (Surveillance)
		4	Remote Printer
		5	Not used
		7	COIN
		9	Pole Display
6	Initial Feeding Line KP	0 - 20	
7	End Feeding Line KP	0 - 20	
8	Initial Feeding Line Slip	0 - 20	
9	Print Line On Guest Check	0 - 50	
10	Scale Type	0	NCI
		1	CAS
11	Printer Type	0	NONE
		1	SRP-270/275/Ellix 10
		2	SRP-350/370/Ellix 20
		3	SRP-500

Preparing the ER-390M for Communications

The register must be ready for communications:

- Connect the register directly to the PC with the appropriate cable. See “Cabling Diagrams” on page 29.
- The register power must be on.
- A clerk must be signed on.
- The register cannot be inside of a transaction.
- The key lock can be in any position.

Installing the Utility

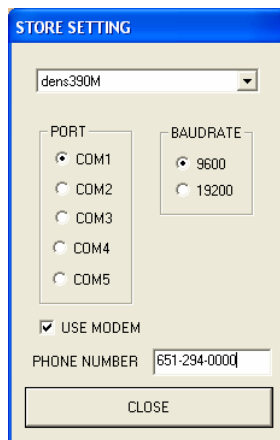
1. From Windows Explorer, locate the file: SETUP390.exe. Double click the file to open the installation dialog box.
2. Follow the instructions on the screen to complete the installation.

Starting the PC Utility

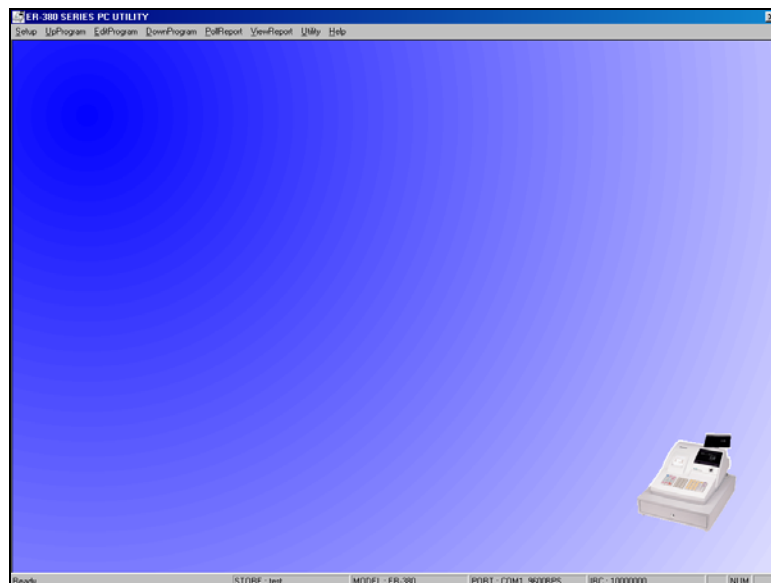
1. Choose **Start, Programs, SHC PC UTILITY** and then **390pc**. When starting the utility for the first time, the ADD STORE dialog box displays.



2. Enter the store name and click **OK**. The STORE SETTING dialog displays.



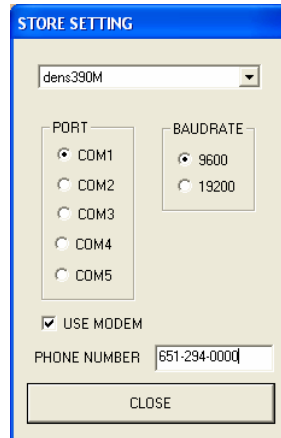
2. Select the store you wish to open and click the **Close** button. The **ER-390 Series PC Utility** window opens.



Store Settings

There is no limit to the number of stores. When you start the utility for the first time, enter the store name and select the PC port and baud rate.

The Store Setting Dialog Box



Selecting a Store

- ◆ Select the working store when you start the utility.
- ◆ To change the working store after the utility has been started, choose **Setup Store** from the **Setup** menu and select a different store from the drop-down list box.

Adding a Store

- ◆ Choose **Add Store** from the **Setup** menu. At the **Add Store** dialog, enter the store name and click **OK**. At the **Store Setting** dialog, select the PC port, baud rate and click the **Close** button.

Removing a Store

- ◆ Choose **Remove Store** from the **Setup** menu. At the **Remove Store** dialog, select the store name to remove and click **OK**.

Using a Modem

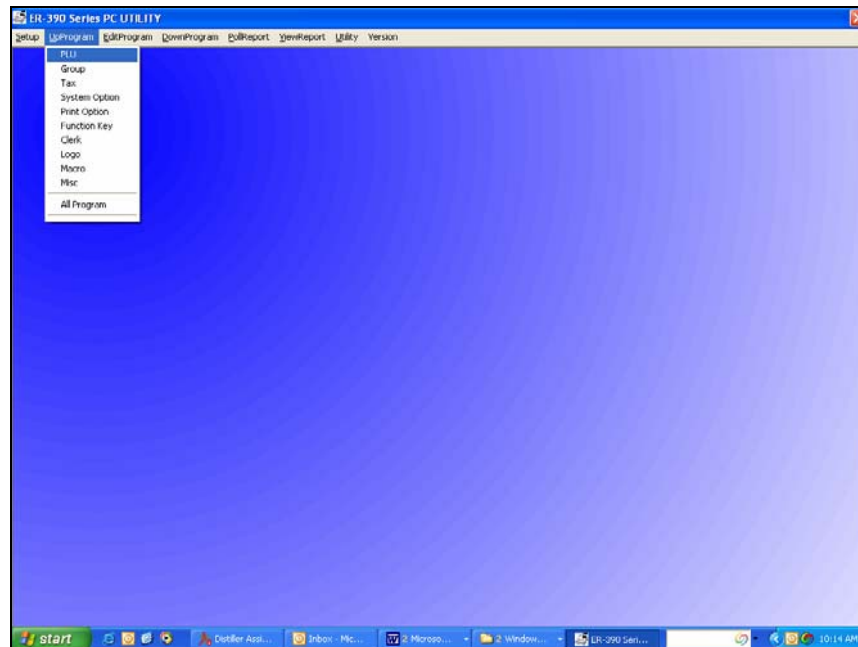
- ◆ Choose **Use Modem** check box and enter the phone number of the store in the **Phone Number** field.

Upload/Download Programs

UpProgram

You must upload a program before program edit functions are allowed.

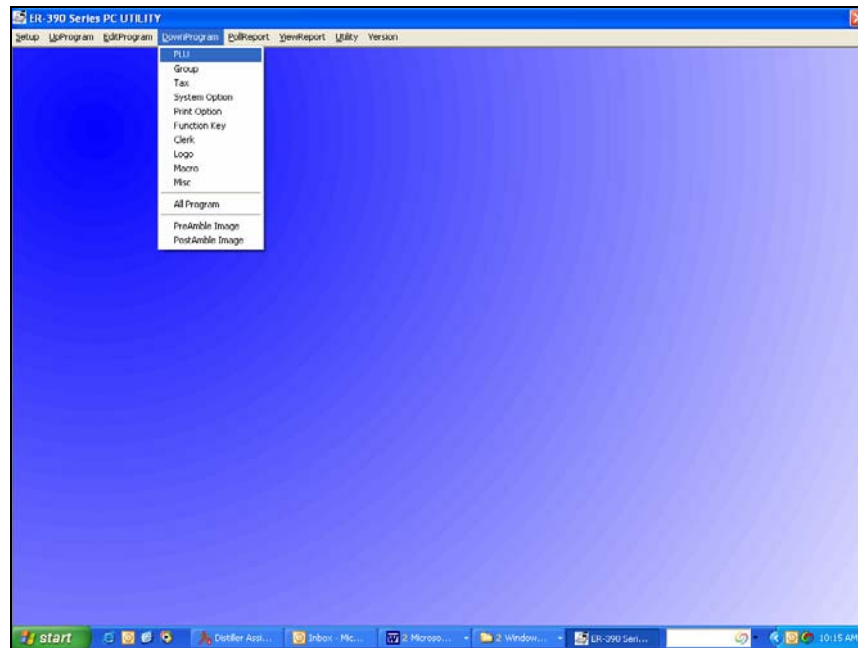
- ◆ Select the program segment you wish to upload from the **UpProgram** menu, or select **All Program** to upload the entire register program



DownProgram

Downloading a program will overwrite the existing register program.

- ◆ Select the program segment you wish to download from the **DownProgram** menu, or select **All Program** to download the entire register program (not including PreAmble and PostAmble images, that are downloaded separately.)



Edit Programs

Procedures

With the exception of memory allocation, all register programs can be edited with the PC Utility. You will find options neatly organized on dialog boxes, making register option programming on the PC Utility more efficient than programming options at the register.

- **You must upload a program before program edit functions are allowed.**

1. To edit a program, choose the appropriate program from the **EditProgram** menu. An example of each program dialog box is shown in this chapter.
2. After edits, click **Save** to exit and save changes, or click **Cancel** to exit without saving changes.

Tips

- Each Store's data, including both uploaded program files and polled report files, is located in a separate folder under the ER-390MPC folder.
- If you are building a new register program based upon an existing store, you can copy an existing store's program files to a new store folder. It is often more efficient to modify an existing program than to start over with a new one.
- If you are building a large PLU file with identical (or similar) options for each PLU, you may find the from/to PLU programming at the register useful. For example, you can first program the identical options for a range of PLUs at the register. Then upload the PLU program with the utility. Use the utility to program descriptors, prices and make adjustments to each PLU individually. Finally, you can download the completed program to the register.
- If you have questions regarding the meaning of ECR features, refer the appropriate *ER-390M Program and Operation* manual for an explanation of your program options.

Program Edit Screens

PLU

PROGRAMMING PLU - Right click to delete an item.

CODE	DESCRIPTOR	PRICE
1	steak sand	6
2	EL POLLO LOC	1
3	Chicken sand	5
4	Grilled chee	2
5	chicken leg	1
6	Chicken Wing	4
7	Chicken&RIBS	19
8	Hamburger	3
9	Cheeseburger	4
10	FF's	1
11	Onion Rings	2
12	Mushrooms	4
13	Hot Dog	1

TOTAL PLU#: 13

PLU CODE:

DESCRIPTOR:

GROUP: 1 0 0

PRICE1:

PRESET ☒ PRESET OVERRIDE ☒

TAXABLE BY: ☐ 1 ☐ 2 ☐ 3 ☐ 4

FOOD STAMP ELIGIBLE ☐ NEGATIVE ITEM ☐

HASH ITEM ☐ SINGLE ITEM ☐

NON ADD # COMP. ☐ GALLONAGE ITEM ☐

SCALABLE ☐ DISABLE PROMO ☐

PRINT ON RECEIPT ☒ AUTO SCALE ☐

PRINT PRICE ON RECEIPT ☒ COUNTER NOT RESET ☐

PRESET OVERRIDE IN MGR MOD ☐ DISABLE ☐

LINK PLU CODE:

AUTO TARE: 0

SAVE & EXIT

SAVE & NEW

CANCEL

Groups

GROUP

#	DESCRIPTOR
1	GROUP 1
2	GROUP 2
3	GROUP 3
4	GROUP 4
5	GROUP 5
6	GROUP 6
7	GROUP 7
8	GROUP 8
9	GROUP 9
10	GROUP 10
11	GROUP 11
12	GROUP 12
13	GROUP 13
14	GROUP 14
15	GROUP 15
16	GROUP 16
17	GROUP 17
18	GROUP 18
19	GROUP 19
20	GROUP 20

GROUP 1

DESCRIPTOR: GROUP 1

☒ ADD TO GROUP TOTAL

☐ SEND TO KP

KP PORT

☐ PORT#

☐ RECEIPT

☐ PRINT RED ON KP

SAVE

CANCEL

Tax

Tax

TAX1

☒ ADD ON

☐ TAX TABLE

☐ VAT

RATE

6.500

GST TAXTABLE

☐ TAX1

☐ TAX2

☐ TAX3

SAVE

CANCEL

System Option

SystemOption

☒ BEEPER ACTIVE

CLOCK ENTRY

Push

CLERK IS

Stay down

☒ DRAWER NEED TO BE SHUT TO OPERATE

☐ ACTIVATE DRAWER OPEN ALARM

SECONDS TO ALLOW DRAWER OPEN (1-99)

30

☐ ALLOW POST TENDER

☒ OPEN DRAWER ON POST TENDER

☐ ALLOW MULTIPLE RECEIPTS

☐ CASH DECLARATION REQUIRED

☐ NEGATIVE BALANCE IN X MODE

☐ ZERO BALANCE IN X MODE

☐ RESET TRANSACTION NO. ON Z REPORT

☐ RESET GRAND TOTAL AFTER Z REPORT

☒ OPEN DRAWER WHEN REPORTS RUN

☒ OPEN DRAWER DURING TRAIN MODE

DECIMAL PLACE

2

DATE FORMAT

MDY

% AND TAX CALCULATION

Round up at 0.50

SPLIT PRICE CALCULATION

Round up at 0.50

☐ COMP. EAT-IN T-OUT D-THRU BEFORE TENDER

HASH IS

Normal

RESET Z COUNTER AFTER Z1 REPORT

☐ Finan. Rpt.

☐ Time Rpt.

☐ PLU Rpt.

☐ Clerk Rpt.

☐ Group Rpt.

RESET Z COUNTER AFTER Z2 REPORT

☐ DAILY SALES REPORT

☒ PRINTER PAPER SENSOR ACTIVE

☐ DEACTIVATE SPLIT PRICING

☐ ALLOW DIRECT MULTIPLICATION

GLOBAL ENTRY LIMIT (0-14)

0

☐ DIRECT MULT MORE THAN ONE DIGIT

☐ DISPLAY ADD PRICE OF LINKED ITEMS

☐ ALLOW SWEDISH ROUND ON SUBT

☐ ALLOW SWEDISH ROUND ON CASH

☐ ELECTRONIC JOURNAL ENABLE

☐ PROMPT OPERATOR WHEN EJ BUFF. IS FULL

☐ STOP OPERATIONS WHEN EJ BUFF. IS FULL

☐ SEND ONLY NEGATIVE ENTRIES TO EJ

☐ SEND RESET REPORT TO EJ

☐ DISABLE CASH DECLARE

☐ USE SPOOL

☐ ALLOW DOLLAR ENTRY W/O SCALE ON SCALEABLE ITEM

EFT DRAFT IS

DATATRA

PIN PAD TYPE

ROTATE

☐ OVERLAY DESCRIPTOR

☐ USE MCR

USE TRACK

TRACK 1&2

MSR CONNEDTED

DATATRAN

SAVE

CANCEL

ER-390 PC Utility

Edit Programs • 15

Print Option

PRINT OPTION

<input type="checkbox"/> MEDIAL TOTALS ON CLERK REPORT	<input type="checkbox"/> PRINT SUBTOTAL WITHOUT TAX	<input type="checkbox"/> PRIORITY PRINT BY GROUP ON KP
<input checked="" type="checkbox"/> PRINT TAX SYMBOL	TAX AMOUNT IS <input type="text" value="ITEMIZE"/>	<input type="checkbox"/> PRINT PLU # ON RECEIPT
<input checked="" type="checkbox"/> PRINT VOID MODE AND RETURN ON REPORT	<input checked="" type="checkbox"/> PRINT TAX AMOUNT	<input type="checkbox"/> NOT PRINT WHEN POLLING REPORT
<input type="checkbox"/> PRINT AUCTION ON REPORT	<input type="checkbox"/> PRINT TAXABLE TOTAL	<input type="checkbox"/> PRINT PLU# IN PLU REPORT
<input checked="" type="checkbox"/> PRINT PLU REPORT BEFORE FINANCIAL REPORT	<input type="checkbox"/> PRINT TAX % RATE	GRAND TOTAL IS <input type="text" value="GROSS"/>
<input checked="" type="checkbox"/> SKIP ZERO TOTALS ON FINANCIAL REPORT	<input type="checkbox"/> VAT BREAK DOWN	<input type="checkbox"/> SEND ORDER TO KP AT SUBTOTAL
<input checked="" type="checkbox"/> SKIP ZERO TOTALS ON CLERK REPORT	<input type="checkbox"/> PRINT TRAIN MODE TITLE WHEN TRAIN MODE	<input type="checkbox"/> ON RECEIPT
<input type="checkbox"/> PRINT CLERK REPORT AFTER FINANCIAL REPORT	CURRENCY SYMBOL <input type="text" value=""/>	<input type="checkbox"/> PRINT PREAMBLE GRAPHIC LOGO
<input type="checkbox"/> PRINT SALE ITEM NO.	Conv # 1 <input type="text" value=""/>	<input type="checkbox"/> PRINT POSTAMBLE GRAPHIC LOGO
<input type="checkbox"/> PRINT PLU WITH ZERO TOTALS ON REPORT	Conv # 2 <input type="text" value=""/>	PRE GRAPHIC LOGO <input type="text" value="DEFAULT"/>
<input type="checkbox"/> PRINT SUBTOTALS WHEN PRESSED	Conv # 3 <input type="text" value=""/>	POST GRAPHIC LOGO <input type="text" value="DEFAULT"/>
<input type="checkbox"/> PRINT % OF SALES ON PLU REPORT	Conv # 4 <input type="text" value=""/>	EDIT PRE FEEDING LINE (0-9) <input type="text" value="0"/>
<input checked="" type="checkbox"/> PRINT CONSECUTIVE NO.	<input checked="" type="checkbox"/> PRINT KP ORDER # ON RECEIPT	EDIT POST FEEDING LINE (0-9) <input type="text" value="0"/>
<input checked="" type="checkbox"/> PRINT DATE <input checked="" type="checkbox"/> PRINT TIME	<input type="checkbox"/> PRINT PRICE ON KP	PRINT E.J. FROM <input type="text" value="OLDEST"/>
<input checked="" type="checkbox"/> PRINT MACHINE NO.	<input checked="" type="checkbox"/> SEND TO KP IN VOID MODE	Copy of DATATran receipt (0-99) <input type="text" value="1"/>
<input checked="" type="checkbox"/> PRINT CLERK NAME	<input checked="" type="checkbox"/> SEND TO KP IN TRAIN MODE	<input type="checkbox"/> Mask card number on all EFT drafts
<input checked="" type="checkbox"/> PRINT Z COUNTER	<input checked="" type="checkbox"/> COMBINE LIKE ITEMS ON KP	<input type="checkbox"/> Font size is small
HOME CURRENCY SYMBOL <input type="text" value="\$"/>	VOLUME UNIT <input type="text" value="GAL"/>	
<input checked="" type="checkbox"/> PRINT RECEIPT WHEN SIGN ON/OFF	<input checked="" type="checkbox"/> PRINT PREAMBLE MESSAGE ON RECEIPT	
Print Grand total <input type="checkbox"/> On X Report <input checked="" type="checkbox"/> On Z Report	<input checked="" type="checkbox"/> PRINT POSTAMBLE MESSAGE ON RECEIPT	
Print Gross total <input type="checkbox"/> On X Report <input checked="" type="checkbox"/> On Z Report	<input checked="" type="checkbox"/> AVERAGE ITEM / CUST	
	<input checked="" type="checkbox"/> AVG \$ / CUST	
	<input type="checkbox"/> BUFFER RECEIPT ISSUE WHEN RECEIPT IS ON	

SAVE CANCEL

Function Key

FuncKey

Function Key

NOSALE
% 1
% 2
% 3
% 4
% 5
ADDCHK
CANCEL
CASH
CHARGE1
CHARGE2
CHARGE3
CHARGE4
CHARGE5
CHARGE6
CHARGE7
CHARGE8
CHARGE#
CHKCASH
CHECK
CONV1
CONV2
CONV3
CONV4
OVTHR
EATIN
ERRCORR
F/S SUB
F/S TEND

SAVE CANCEL

NOSALE

DESCRIPTOR 1

DESCRIPTOR 2

☐ KEY DISABLE ☐ UNDER MGR CONTRC

☐ INHIBIT NO SALE AFTER NON-ADD #

☐ ENFORCE# ENTRY AT START OF SALE

☒ PRINT ON N/S

☐ NON-ADD# PROHIBIT

☐ COMP. NON-ADD # MUST MATCH MAX DIGIT

MAX DIGIT (0 - 8)

OK CANCEL

Clerk

CLERK

#	DESCRIPTOR
1	CLERK 1
2	CLERK 2
3	CLERK 3
4	CLERK 4
5	CLERK 5
6	CLERK 6
7	CLERK 7
8	CLERK 8
9	CLERK 9
10	CLERK 10

CLERK 1

DESCRIPTOR

CLERK CODE

SAVE

CANCEL

Logo/Descriptors

LogoDesc

PREAMBLE

1

2

3

4

6

7

POSTAMBLE

1

2

3

5

6

7

ENDORSEMENT MESG

SAVE

CANCEL

[illegible]

Untitled - MacroPgm

File Edit Macro Mode FundList Help

MACHRO 1	MACHRO 2	MACHRO 3	MACHRO 4	MACHRO 5	MACHRO 6	MACHRO 7	MACHRO 8	MACHRO 9	MACHRO 10	FuncKey LIST	CLEAR CURR	CLEAR ALL	EXIT	
-------------	-------------	-------------	-------------	-------------	-------------	-------------	-------------	-------------	--------------	-----------------	---------------	--------------	------	--

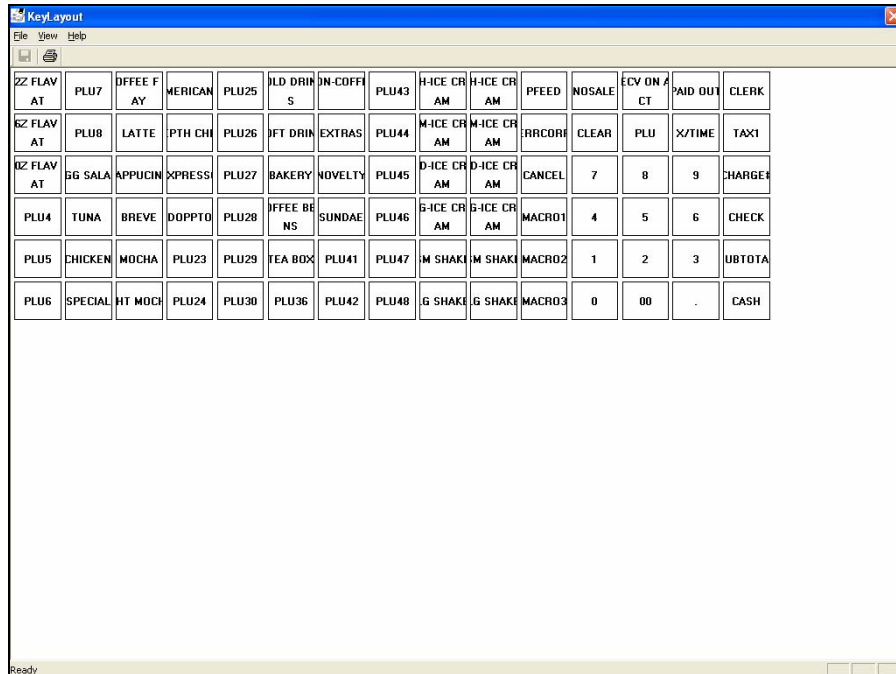
MACRO 1 : MACRO1

ZZ FLAV L	PLU7	FFEE F D	AMERICAN	PLU25	OLD DRINK	IN COFFE	PLU43	HICE CREA	HICE CREA	PFEED	NOSALE	CV ON AC	PAID OUT	CLERK
ZZ FLAV L	PLU8	LATTE	EPH CHR	PLU26	OFT DRIN	EXTRAS	PLU44	HICE CREA	HICE CREA	ERRCORR	CLEAR	PLU	%TIME	TAX1
ZZ FLAV L	GG SALAD	APPUICINI	EXPRESSO	PLU27	BAKERY	NOVELTY	PLU45	HICE CREA	HICE CREA	CANCEL	7	8	9	CHARGE#
PLU4	TUNA	BREVE	DOPPTD	PLU28	FFEE BEA	SUNDAY	PLU46	HICE CREA	HICE CREA	MACRO1	4	5	6	CHECK
PLU5	CHICKEN	MOCHA	PLU23	PLU29	TEA BOX	PLU41	PLU47	SM SHAKE	SM SHAKE	MACRO2	1	2	3	SUBTOTAL
PLU6	SPECIAL	HT MOCH	PLU24	PLU30	PLU36	PLU42	PLU48	LG SHAKE	LG SHAKE	MACRO3	0	00	.	CASH

1-REG MODE
 25
 3:00
 4 CASH
 5
 6
 7
 8
 9
 10
 11
 12
 13
 14
 15
 16
 17
 18
 19
 20
 21
 22
 23
 24
 25
 26
 27
 28
 29
 30
 31
 32
 33
 34
 35
 36
 37
 38
 39
 40
 41
 42
 43
 44
 45
 46
 47
 48
 49
 50

Key Layout

Note: To see the entire keyboard on the screen, the screen resolution must be set to 1024 x 768 pixels.



Comm Port

The screenshot shows a window titled "CommPort" with a dropdown menu set to "PORT 1". The window contains the following configuration options:

BAUDRATE	9600	PARITY	NONE
DATA BITS	8 BIT	STOP BIT	1 BIT
SCALE TYPE	NCI	POLE DISPLAY TYPE	EPSON
DEVICE FUNCTION	PC	PRINTER TYPE	NONE
INITIAL FEEDING LINE (0-20)	0	ENDING FEEDING LINE (0-20)	7

At the bottom of the window are two buttons: "SAVE" and "CANCEL".

Etc. – Tare/Drawer Limit/Change Limit/Machine Number

Etc

TARE WEIGHT

0.100

0.200

0.300

0.400

0.500

DRAWER LIMIT

CHECK CHANGE LIMIT

MACHINE NUMBER

TRAINING MODE PASSWORD

0.00

0.00

12345

0

SAVE

CANCEL

Scan Data

SELECT PROGRAM

PLU

GROUP

TAX

SYSTEM OPTION

PRINT OPTION

FUNCTION KEY

CLERK

LOGO & DESCRIPTOR

MACRO

NLU

ETC(TARE...)

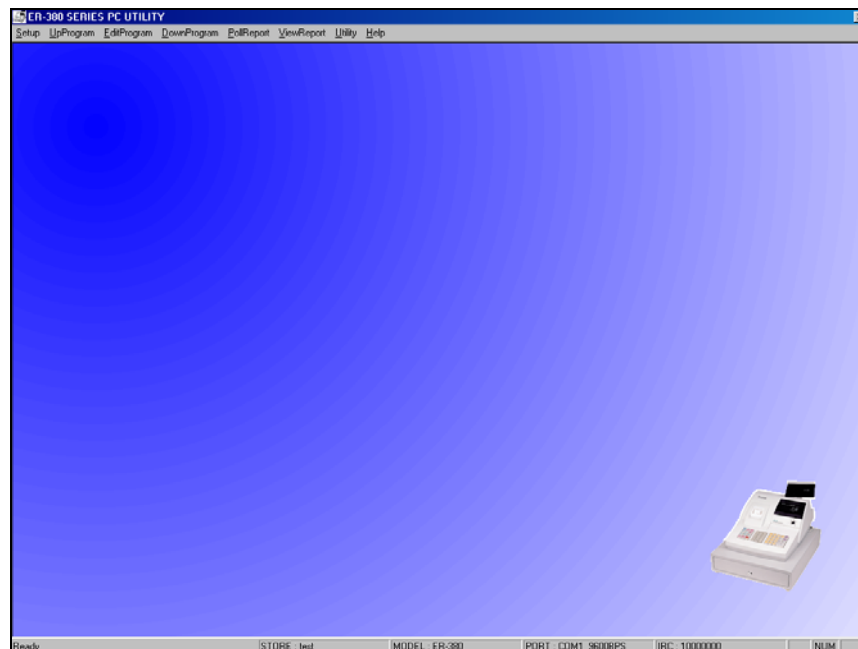
PORT

CANCEL

Reports

Poll Reports

- ◆ Select the report you wish to poll from the **PollReport** menu, or select **AllReport** to upload all reports.



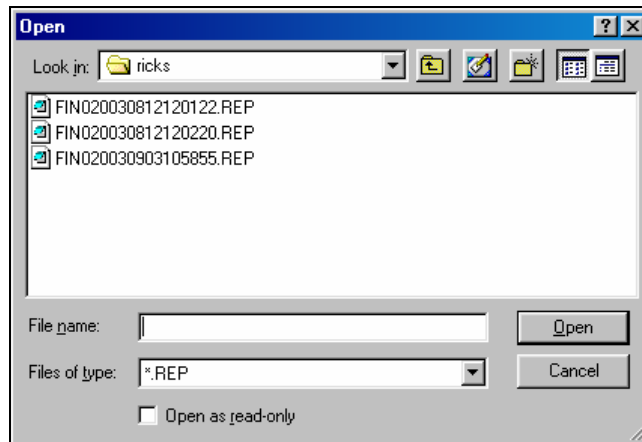
View Reports

Note: Polled report can only be viewed with the built-in viewer. Report files are not ASCII format, nor can they be converted to ASCII format with this utility

1. Select the Individual Report from the ViewReport menu.



2. Click the button that represents the report you wish to view.



3. Select the report you wish to view and click **Open**.

Click to display the report without totals that have zero values

Click to view the next page of the report.

DESCRIPTION	COUNT	TOTAL
+PLU TTL	80.00	300.78
-PLU TTL	0.00	0.00
ADJUST TTL	80.00	300.78
NONTAX	2	8.38
TAX1 SALES	0	289.45
TAX2 SALES	0	289.45
TAX3 SALES	0	286.45
TAX4 SALES	0	292.40
TAX1	0	18.74
TAX2	0	17.50
TAX3	0	17.32
TAX4	0	17.68
XMP11 SALES	0	0.00
XMP12 SALES	0	0.00
XMP13 SALES	0	0.00
XMP14 SALES	0	0.00
EATIN TTL	0	0.00
TAKEOUT TTL	0	0.00
DRTHRU TTL	0	0.00
% 1	0	0.00
% 2	0	0.00
% 3	0	0.00
% 4	0	0.00
% 5	0	0.00
NET SALE	50	372.02
CREDIT TAX1	0	0.00
CREDIT TAX2	0	0.00
CREDIT TAX3	0	0.00
CREDIT TAX4	0	0.00
FD/S CREDIT	0	0.00

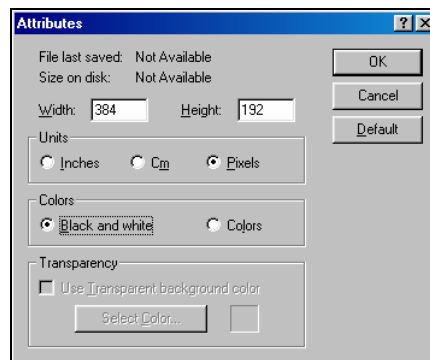
4. Use the scroll bar or the arrow buttons to view the report

Prepare & Load Bitmap Logos

Preparing a Graphic Logo Bitmap for an ER-390M

The image must be black/white, 384 x 192 pixels, and 10 Kbytes or less in size.

1. Open MS Paint.
2. Open the image file you wish to use.
3. Choose **Attributes** from the **Image** menu. The **Attributes** dialog box displays.

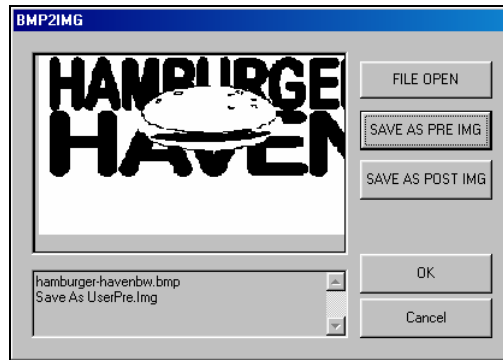


4. The image dimensions must be no larger than 384 pixels wide by 192 pixels high. If the image size in pixels is greater than the maximum, you must resize your image.
 - a. Click **OK** to exit the Attributes dialog.
 - b. Select your image. (Choose **Select All** from the **Edit** menu.)
 - c. Using the handles of the selected image, resize the image. Keep the image in the upper left corner of the screen.
 - d. Choose **Attributes** from the **Image** menu. The **Attributes** dialog box displays again. Enter 384 in the **Width** field; enter 192 in the **Height** field; select **Pixels** as the unit. Click **OK** to exit the dialog box.

- e. Your image will be cropped to the 384 x 192 pixel size. If you cropped part of the image you wish to keep, you can undo (Ctrl + Z) and try again. You may have to experiment a bit to resize the image inside the 384 x 192 pixel limit.
5. After the image is sized, select **Black and white** in the **Attributes** dialog.
6. Save your image as type “Monochrome Bitmap (*.bmp,*.dib)” and confirm that the size is 10k or less.

Download a Graphic Logo to an ER-390M

1. Install the *ER-390M PC Utility* on your PC.
2. At the ER-390M, set the RS-232C option address #5 to a value of 1 (PC).
(S position; 80 SBTL; 5 X/TIME; 1 CASH; CASH, or
S position; 81 SBTL; 5 X/TIME; 1 CASH; CASH)
3. Return key lock to **REG** and sign on a clerk.
4. Connect the PC to the ER-390M using one of the following cables:
CCR Part # 522035 (Register DB-9M to PC DB-9F)
CCR Part # 522038 (Register DB-9M to PC DB-25F)
5. At your PC, start the ER-390M PC Utility. (Select **Start, Programs, SHC PC UTILITY, ER-390M PC UTILITY.**) The **Store Setting** dialog box displays.
6. If you are starting the ER-390 PC Utility for the first time, you must define a store name, or if a store is already defined, you can select the store from the drop down list. After the store is defined or selected, click **Close**. The PC Utility program starts.
7. Move the .bmp logos you wish to use into the store directory (i.e. C:/ER-390PC/storename.)
8. At the PC Utility, choose **Convert Logo Image** from the **Utility** menu. The Bmp dialog box displays.
9. Click **FILE OPEN**. Select the bitmap image you wish to use from the **Open** dialog and click the **Open** command button.
10. Click the **SAVE AS PRE IMG** or **SAVE AS POST IMG** button.



11. When the image is selected, click **OK**. Verify that the message “Save As UserPre.Img” or “Save As UserPost.Img” displays. If the file is too large, and cannot be loaded, the message “File Size Error” display.
12. Choose **PreAmble Image** or **PostAmble Image** from the **DownProgram** menu.
13. The screen will track the progress of the download. When complete, the **COMM COMPLETED** message will display, click **OK**.

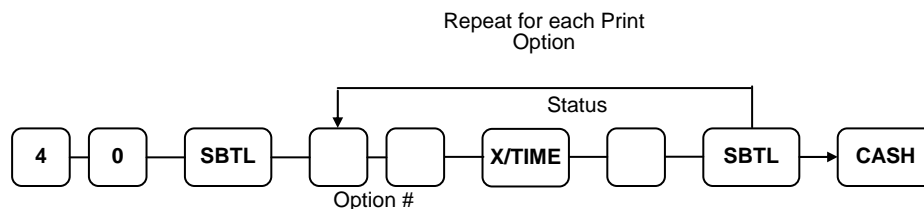
Printing the Logo Image – ER-390M Settings

Two addresses in Print Option Programming affect graphic logo printing:

Option #28 – Add the value of 1 to address 28 if you wish to print the pre graphic logo on the receipt. Add the value of 2 to address 28 if you wish to print the post graphic logo on the receipt.

Option #30 – Add the value of 1 to address 30 if you wish to print your custom bitmap instead of the default bitmap “Thank You – Your Receipt”. Add the value of 2 to address 30 if you wish to print your custom bitmap instead of the default bitmap “Call Again”.

Print Option Flowchart (P Key Lock Position)



Appendix

Cabling Diagrams

You can configure cables yourself with the diagram provided here, or you can order the appropriate cables from CCR Parts at +27 11 8369512.

Direct Connection

Sam4s DB-9M	PC DB-9F
DCD1	1DCD
RXD2	2RXD
TXD3	3TXD
DTR4	4DTR
GND5	5GND
DSR6	6DSR
RTS7	7RTS
CTS8	8CTS
VCC9	9RI

Sam4s DB-9M	PC DB-25F
DCD1	1ChGND
RXD2	2TXD
TXD3	3RXD
DTR4	4RTS
GND5	5CTS
DSR6	6DSR
RTS7	7GND
CTS8	8DCD
VCC9	20DTR

Modem Communication

Use PC to Modem and Modem to ECR connections. The recommended US Robotics Modem is also available from CCR

