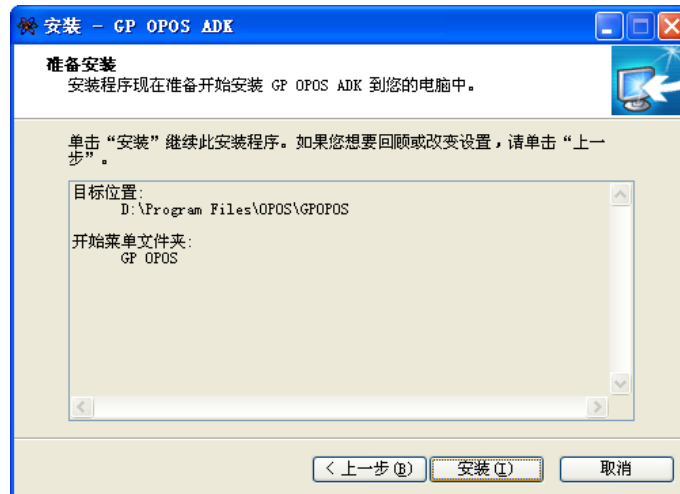
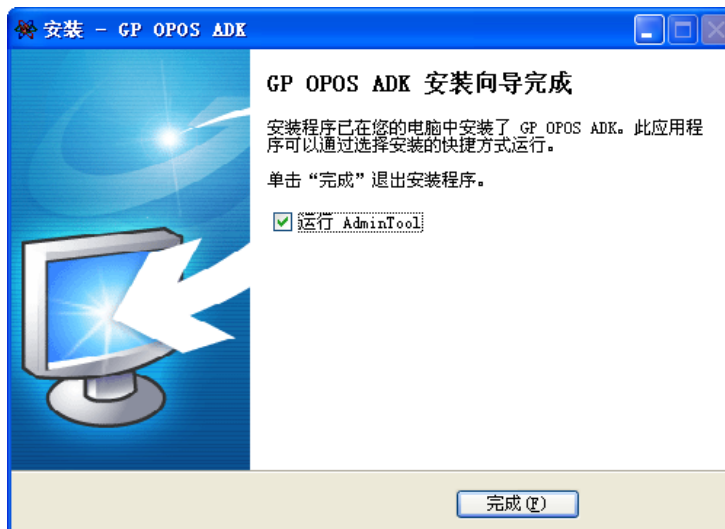


# OPOS INSTRUCTION

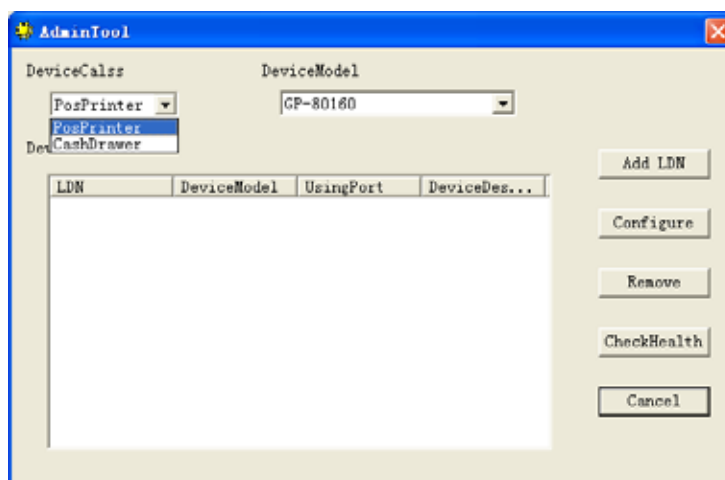
1. Install GP OPOS SETUP.EXE as following:



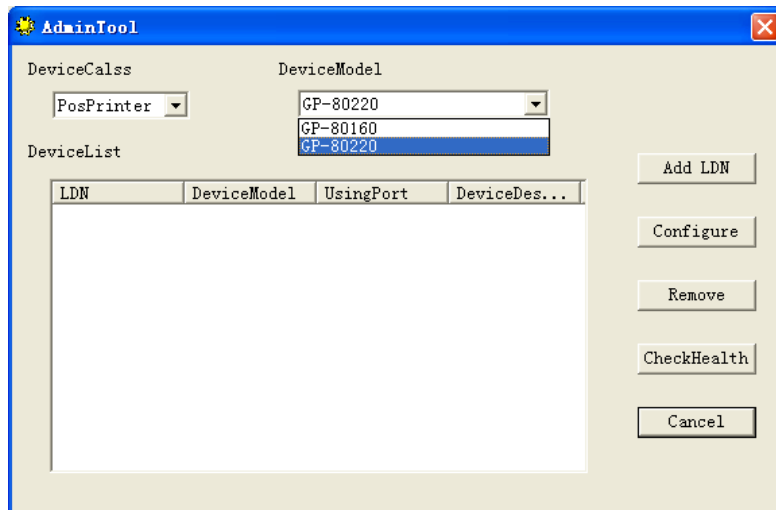
2. Succeed installing as following:



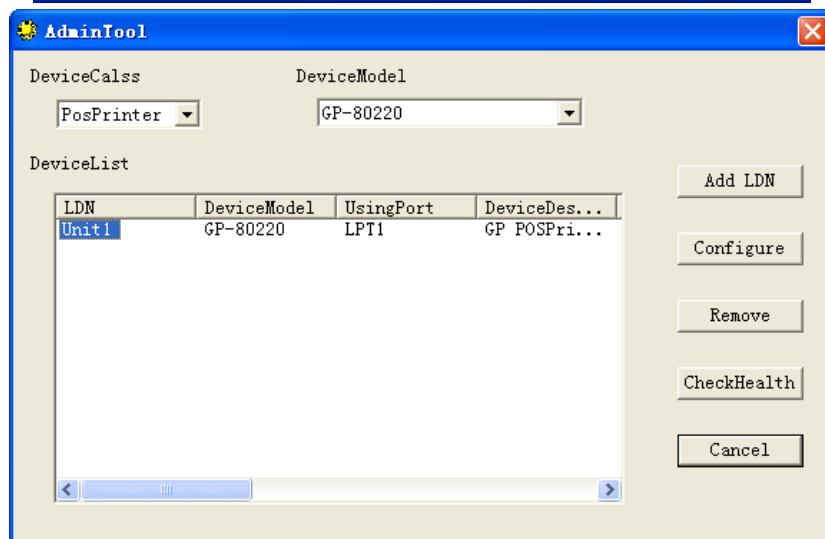
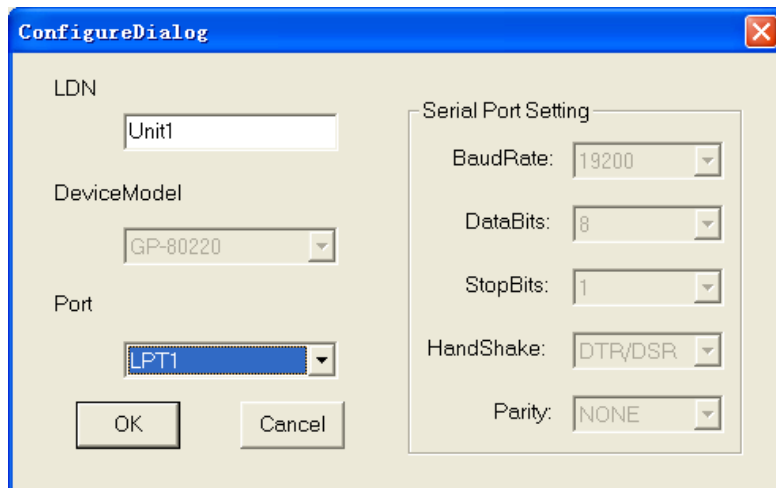
3. Run GP OPOS program AdminTool.EXE as following:



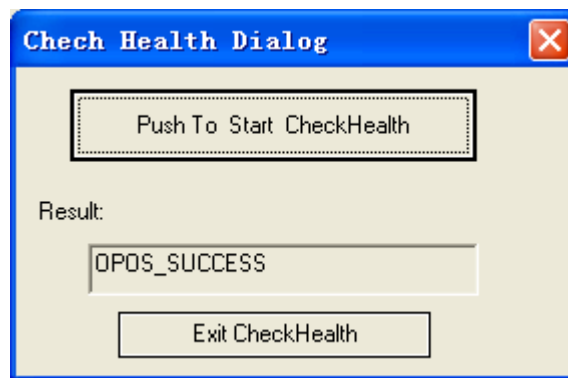
4. Choose PosPrinter” under “DeviceClass” title, choose “GP-80220” under “DeviceModel” title, as following:



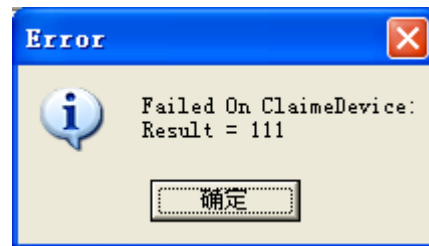
5. Choose “Add LDN” to add new “LND”(Logical Device Name), choose and setup printer port, then confirm, just as following:



6. Choose “Unit1” under “DeviceList” title, choose “CheckHealth” to test printing setup and connection status. It proves successful with following picture.



It proves failure with following picture, so please re-setup printer or re-connect printer.



7. Attention: When use GP OPOS, please uninstall other OPOS software and delete LDN of other printer, to avoid conflict between printer port and LDN; at the same time, please don't make any program to hold on the port that OPOS demand, otherwise data transmitting will be failed.
7. Attention: At present OPOS software test version isn't available for Win9x system.

July 31,2006