
MicroPlus

MPAD Plus Video Controller



All specifications are subject to change without notice

MPAD Plus Manual Revision 1.5

Contents

M PAD PLUS Setup	3
ECR Type Selection & Quick Start	3
Version Identification	5
Auto Log.....	5
Condiment Indent	5
Select Touch Screen Type	5
MPAD Plus Configuration Settings.....	6
Set Up with the MPAD Plus Router	8
Prioritization	9
Displaying Key Items	9
Settings for Multiple MPAD Plus Controllers & Router.....	10
Change Video Routing by Period.....	11
MPAD Plus Operations	13
Receiving Orders	13
Bumping Orders	13
Recalling Orders	14
Reports.....	14
KVS Serve Function Key	14
Appendices	15
Updating MPAD Plus Flash ROM	15
Logging.....	21
[System Type].dat.....	23
Mxkernel.ini	26
Backing-Up Program Files	29
MPAD Plus Compatible Platforms.....	30
MPAD Plus Software Revision History	31
Manual Revision Record	33

M PAD PLUS Setup

ECR Type Selection & Quick Start

Most single MPAD Plus applications require only ECR Type Selection before they are ready to run. This can be started in three different ways and completed with the instructions that follow.

Once the ECR type has been selected, the MPAD Plus, by default, will receive all Kitchen Video Groups (KVG), all registers, and all destinations. At the ECR, all that is required is to route PLUs/Groups to a Kitchen Video Group.

Note: The ECR Type selection procedure also resets the MPAD Plus to default. If you made changes to any configuration files (.dat or MXKERNEL.ini) these files will also be reset to default.

Method 1

The first time the MPAD is powered up it will display a menu from which you choose the register which will be sending the KVS data.

Method 2

If the the MPAD comes up with a register type that is not the correct or you need to change the ECR type supported:

1. Power down the MPAD, reboot, press ALT Q,
2. Type MP_SETUP press <Enter>.
3. A directory of all registers supported will display.
4. Choose the desired directory and the MPAD Plus will run setup for this selection.

Method 3

On newer versions of MPAD Plus, 6/07 upon booting up the text message (setup?) will appear for a short time.

When you see this message, press the REFRESH key on the MPAD Bump Pad. This will

bring up a directory of all registers supported.

Choose the desired directory and the MPAD will run setup for this selection.

Selecting ECR Type Procedure

1. Use the Up and Down Arrow keys to select the system you are using.

```
***** Mpad+ System Setup *****
POS System Name      Directory
41 Palm Teg          [PALMTEQ ]
42 PC-NET             [PC_NET ]
43 Penny Lane         [PennyL_M]
44 Plexis             [M_POS_L ]
45 Pinnacle           [PINN_MP ]
46 RCS (Batch)        [RCS_MPAD]
47 RCS (L-B-L)        [RCSLBL_M]
48 Rest. Manager      (Batch) [ACT_MPAD]
49 Rest. Manager      (L-B-L) [ACT_L_MP]
50 Rest. Manager (L-B-L Touch) [ACTTOUCH]
51 Rest. Mgnager (Batch Touch) [ACTMPADT]
52 Restaurant-Pro     [REST_PRO]
53 RMS TOUCH          [RMSTOUCH]
54 R-Power (BATCH)    [RPOWER ]
55 R-Power (L-B-L)    [RPOWER_L]
56 Sable              [SABLE_MP]
57 Samsung 650        [SAM650MP]
58 Samsung SPS 1000/2000/7000 [SPS_MPAD]
59 Samsung SPS Elo Touch [SPSMFADT]
60 Samsung SPS Fujitsu Touch [SPSMFADF]

Use The Up & Down Arrows to Select a System
Press [FUNC] or [Enter] to Copy Files or [ESC] to Abort
```

2. With the appropriate system highlighted, press <ENTER>.

```
System SETUP for ....Samsung SPS 1000/2000/7000 [SPS_MPAD]
Press [ESC] to abort or any other key to Proceed with SETUP
```

3. Press <ESC> to abort or any key to proceed with setup.

```
System SETUP for ....Samsung SPS 1000/2000/7000 [SPS_MPAD]
Press [ESC] to abort or any other key to Proceed with SETUP
Copy from Directory [SPS_MFAD]
Setup Finished ..... Press <CTL> <ALT> <DEL> to boot system
Press any other key to return to Setup
```

4. Follow the screen instructions: “Setup Finished Press <CTL> <ALT> to boot system. Press any other key to return to Setup”.

Version Identification

MPAD Plus versions manufactured after 1/11/2008 include a version identification option.

To access version identification:

1. From the four or eight cell display screen, type ALT K on the PS/2 keyboard.
2. The version will display below the screen title.

Auto Log

MPAD Plus versions after 1/11/08 will automatically save log files to the non-volatile drive. The MPAD Plus has 20 mg memory available for log file storage.

Prior to 1/11/08 log files were saved to volatile memory and were lost when the MPAD Plus was powered off.

Condiment Indent

The condiment indent feature was not initially included in the MPAD Plus. This feature was added in MPAD Plus versions after 1/11/08.

In versions after 1/11/08, condiments are not indented by default. To turn on this feature, go to the .dat file. Go to the ALPHA 20 area and insert a capital I, the indent command.

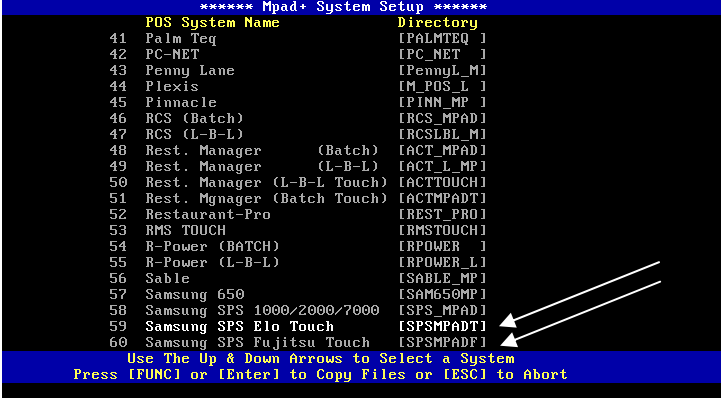
See the appendix for other ALPHA 20 options.

Select Touch Screen Type

If a touch monitor is used, the monitor can be used instead of a bump pad.

1. Type: MP_SETUP
2. Select from available Touch Choices

ELO, Fujitsu,



```
***** Mpad+ System Setup *****
  POS System Name      Directory
  41 Palm Teq           [PALMTEQ ]
  42 PC-NET             [PC_NET ]
  43 Penny Lane         [PennyL_M]
  44 Plexis             [M_POS_L ]
  45 Pinnacle           [PINN_MP ]
  46 RCS (Batch)        [RCS_MPAD]
  47 RCS (L-B-L)        [RCSLBL_M]
  48 Rest. Manager      (Batch) [ACT_MPAD]
  49 Rest. Manager      (L-B-L) [ACT_L_MP]
  50 Rest. Manager (L-B-L Touch) [ACTTOUCH]
  51 Rest. Mynager (Batch Touch) [ACTMPADT]
  52 Restaurant-Pro     [REST_PRO]
  53 RMS TOUCH          [RMS TOUCH]
  54 R-Power (BATCH)    [RPOWER ]
  55 R-Power (L-B-L)    [RPOWER_L]
  56 Sable              [SABLE_MP]
  57 Samsung 650        [SAM650MP]
  58 Samsung SPS 1000/2000/7000 [SPS_MPAD]
  59 Samsung SPS Elo Touch [SPSPADT]
  60 Samsung SPS Fujitsu Touch [SPSPADF]

Use The Up & Down Arrows to Select a System
Press [FUNC] or [Enter] to Copy Files or [ESC] to Abort
```

3. Press <Enter>, Press <Enter> again.

When selection is made for Touch Type you **MUST CALIBRATE** the Mpad Plus with the Video Monitor.

During calibration of the monitor you will be prompted to press 4 Touch Zone Targets on the monitor screen. A touch zone target will appear at the lower left, upper left, lower right and upper right corners of the monitor. If the left side or right side touch zone targets do not appear during calibration you must adjust the display settings of the monitor, then re-try the calibration procedure. The 8 grid box must appear in full with a border surrounding the perimeter when viewing the monitor in Mpad Plus video mode.

To Calibrate Monitor

1. Type ALT K
2. Alt K brings you to a menu screen, select calibrate. Follow the on screen calibration instructions.

MPAD Plus Configuration Settings

There are two configuration settings files: MXKERNEL.ini and the system specific .dat file. For example if you are the MPAD Plus with a SAM4s SPS-1000, SPS-7000 or SPS-2000 ECR system, you will use the SPS_1000.dat configuration file.

[System Type].dat

If you are not certain of the dat file your system is using, at the PS2 keyboard, type DIR and press <ENTER> (note that you can enter the DOS command DIR/P to pause after each page of files is listed.) Look for and make note of the .dat file your system is using.

Among other settings, this file determines which registers or Kitchen Video groups to be displayed on the videos.

MXKERNEL.ini

Among other settings, this file selects video display type *Regular* or *Elongated*, KEY ITEM descriptors and device ID numbers (for multi-MPAD systems). Refer to the appendix for complete explanations instructions.

By default, MXKernel is set for Device ID #1 and “regular” mode (eight cell grid). The .dat ifle is set for: All Periods; All Kitchen Video Groups, All registers and All destinations.

Editing Configuration File Settings

1. Type EDIT [file name] and press <ENTER>. The appropriate .dat file or MXKERNEL.ini file will display.

```

***** X-DOS Editor *****
:
:  MXKERNEL.INI TEMPLATE
:
:  CONTAINS PARAMETER INFORMATION FOR MXKERNEL.EXE
:
:  PROMPTS BEGIN IN COLUMN 1, RESPONSES IN COLUMN 25
:
:  COMMENT STATEMENTS BEGIN WITH A SEMICOLON
:
:  BLANK LINES IGNORED
:
: *****
:
: *****
:
:  G E N E R A L   I N F O
:
:  VIDEOS = 01 - 08 (for now)
:
:  2-PORT/4-PORT KDS communication board:
:
:  M2000/MC4000  IRQ = 03,04,05,06 or 07
:
:  M2000/MC4000  CONFIGURATION = 01-16
:
:  1st MX4000 BOARD = 02  (JP2= A=1-2, B=1-2, C=2-3, D=1-2) ...140-147
:
:  2nd MX4000 BOARD = 04  (JP2= A=1-2, B=2-3, C=1-2, D=1-2) ...190-19F
:
:  MX4000 ADDRESS = 8000/D000
:
:  PRIORITY TIME LIMIT = SECONDS
:
:  RUSH TIME LIMIT = SECONDS
:
:  LOAD AS TSR = YES/NO
:
:  RAM DRIVE = A/B/C/D/E <-MATCH ALPHA[25] IN CRS3000.DAT
:
:  SUMMARY = ON/OFF
:
File: mxkernel.ini          [I / / ] (F10=Menu)  Line: 1          Col: 26

```

2. Use PAGE UP, PAGE DOWN, ARROW (UP, DOWN, LEFT, RIGHT) Keys to find the text you wish to edit. Type new text, use Backspace and/or Delete keys to erase old text.
3. After edits are complete, press F10 (Menu).

```

***** X-DOS Editor *****
;
; MXKERNEL.INI TEMPLATE
; CONTAINS PARAMETER INFORMATION FOR MXKERNEL.EXE
; COLUMN 1, RESPONSES IN COLUMN 25
; TS BEGIN WITH A SEMICOLON
; RED
*****
;
; Editor Menu
;
; Load File
; Write File
; New File
; Search Pattern
; Change Pattern
; GO to Line
; Insert File
; Directory
; Print
; Gateway to DOS
; Help on Editor
; E it
;
*****
;
; r now)
; mmunication board:
; 03,04,05,06 or 07
; URATION = 01-16
; 2 (JP2= A=1-2, B=1-2, C=2-3, D=1-2) ...140-147
; 4 (JP2= A=1-2, B=2-3, C=1-2, D=1-2) ...190-19F
; 0/DB00
; = SECONDS
; CONDS
;
; LOAD AS TSR = YES/NO
; RAM DRIVE = A/B/C/D/E <-MATCH ALPHA[Z5] IN CRS3000.DAT
; SUMMARY = ON/OFF
;
File : mxkernel.ini [L / / (F10=Menu) Line : 1 Col : 26

```

4. Arrow down to select **Exit**, press <Enter>.

```

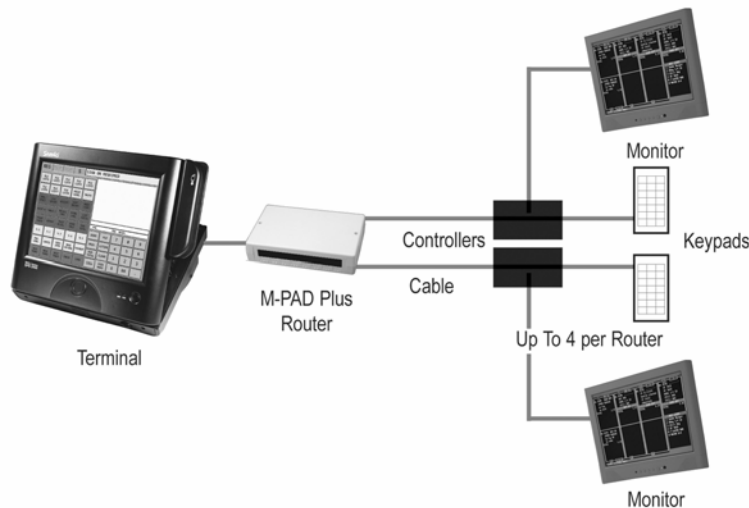
***** X-DOS Editor *****
:
: MXKERNEL.INI TEMPLATE
:
:   CONTAINS PARAMETER INFORMATION FOR MXKERNEL.EXE
:   COLUMN 1, RESPONSES IN COLUMN 25
:   TS BEGIN WITH A SEMICOLON
:
: Editor Menu
:
:   Load File
:   Write File
:   New File
:   Search Pattern
:   Change Pattern
:   GO to Line
:   Insert File
:
:   Ga
:   He
:
:   File unsaved, Confirm quit?
:   No
:   Yes
:   Write File
:
: LOAD
:
: RAM DRIVE = A/B/C/D/E <-MATCH ALPHA[25] IN CRS3000.DAT
: SUMMARY = ON/OFF
:
File : mxkernel.ini          [I / / ] (F10=Menu) Line : 1          Col : 26

```

5. Arrow down to select Write File, press <Enter>. The file will close with your edits saved. The DOS prompt will return.

Set Up with the MPAD Plus Router

Configuration Diagram



Cable Configuration

From the ECR use a RJ45 to RJ45 LAN or Network cable. For example on a SPS2000 use ports 3-5 for the KVS output. Connect the cable to port 3 for example to any port of the MPAD Plus Router. The MPAD Plus router has eight RJ45 input/output jacks and NO POWER supply. It is a pass thru device.

From the MPAD Plus Router use a straight thru LAN or networking cable. On the end of the cable that will be connecting to the MPAD use a RJ45 to DB9F modular adaptor with the following configuration.

RJ45-----DB9F			
RED	to	Pin	3
Black	to	Pin	2
Brown	to	Pin	5
Yellow	to	Pin	7

Prioritization

Prioritization is a feature that allows you to determine the priority in which items are displayed on the video. (For example: appetizers first; entrees second; desserts last.)

Note: The Prioritization feature was removed in the MPAD with TOUCH version to free memory. To determine whether this feature is available on your system:

1. **At the MPAD Plus with a keyboard and a monitor, from the grid screen press “ALT Q”.**
2. **Type DIR and press <ENTER>. In the Directory of files, look for a file in YELLOW text.**

If you have a TOUCH version the file name will be SPSMPADT.exe. If this file is included in the Directory, prioritization has been disabled.

If you have a NON-TOUCH version the file in Yellow text will be SPS_MPAD.exe. This file has the prioritization feature enabled.

If your MPAD Plus includes the file that supports prioritization, the Alpha 31-38 settings in the SPS_1000.dat control the priority of items by kitchen video group.

For video #1, in Alpha 31 enter the kitchen video groups in the order they are to appear on the video. For example, **05,04,03,02,01** would display items in KVG # 05 first, 04 second and so on. You are limited to 6 two digit entries.

Settings in Alpha 31 control for video 1; Alpha 32 controls video 2; and so on, thru Alpha 38 for video 8.

Displaying Key Items

To display the KEY ITEMS, press the [FUNC] key on the keypad. The MPAD Plus will display, in the lower right corner, a summary of all KEY-ITEMS (defined in MXKernel.ini file). The numbers represent the combined total of all KEY ITEMS contained in all the current outstanding orders.

The KEY ITEM window may be left active during normal operation and will continue to reflect the total number of each of the KEY ITEM.

To remove the KEY ITEM window press the [FUNC] again.

Settings for Multiple MPAD Plus Controllers & Router

By using more one than one MPAD Plus controller in a system you can get the effect of a Multi Video system. For example, you can have 1 video monitor display HOT items, one display COLD items and another monitor display ice cream.

To do this, each MPAD Plus must be programmed with a specific DEVICE ID number in the Mxkernel program area. Then in the .DAT program area the video number matching the Device ID number can be programmed for a specific KV Group or Groups.

As information comes from the ECR it passes through to the MPAD Plus Router. The MPAD Plus router passes ALL of this data to ALL MPADs connected to the MPAD Router. Each MPAD gets ALL of the Data, checks its Device ID#, then checks the video programming and then filters the incoming data and displays data specific to its Video setup.

1. Under Mxkernel.ini

General,

Set each MPAD Plus with the video number 1.

Then set each MPAD Plus with a specific DEVICE ID number.

For example if I have 3 MPADs that I want to use in a system I would set the Device ID number as 1 in the 1st MPAD Plus, 2 in the second MPAD Plus and 3 in the 3rd MPAD Plus.

Save the program setting.

2. Next, using ALT Q, and then the command prompt (edit SPS_1000.dat) go to the Video Routing Parameters.
3. You will see information for video 1,2,3,4, etc.

In this programming area think of the Video number as the DEVICE number you set up in Mxkernel.ini

When Multiple MPADs are used, all MPADs in the system must have the same programming in the xxx.DAT programming area. The programming in the MPAD Plus filters the data coming from the ECRs and displays this data to video. When multiple MPADs are used the ECR information is filtered by DEVICE ID.

For example if 3 MPADs are to be used, each MPAD Plus has their own Device ID that was programmed in the Mxkernel.ini programming.

At MPAD Plus #1, go to edit SPS_1000.dat

Set the parameters for Video 1. This in effect is the parameters for DEVICE ID #1.

With 3 MPADs or 3 Devices in a system, the programming parameters for each device must be present in ALL MPADs for the system to function properly.

- MPAD Plus #1 is Device ID #1 and is Video 1 in the .DAT programming area.
- MPAD Plus #2 is Device ID #2 and is Video 2 in the .DAT programming area.
- MPAD Plus #3 is Device ID #3 and is Video 3 in the .DAT programming area.

As information comes from the ECR it passes through to the MPAD Router. The MPAD router passes ALL of this data to ALL MPADs connected to the MPAD Router.

Each MPAD Plus gets ALL of the Data, checks its Device ID#, then checks the video programming and then filters the incoming data and displays data specific to its Video setup.

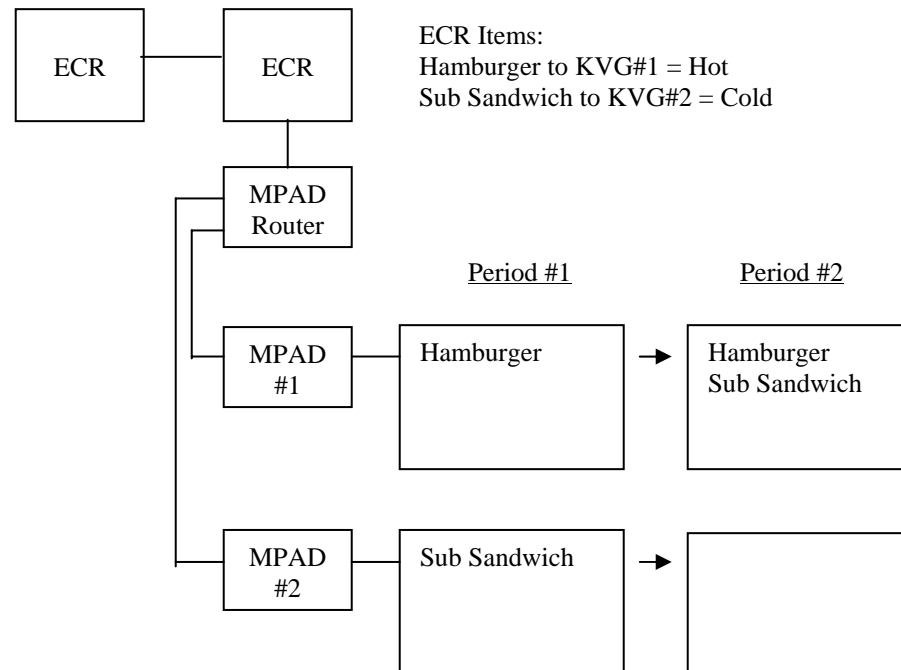
Change Video Routing by Period

When multiple videos are used (MPAD Router and multiple MPAD Plus controllers) restaurants often request the routing of items to change from slow to busy times. For example, a restaurant might have two distinct preparation areas in the kitchen. During busy lunch and diner times, one prep area is designated for “hot” items; one prep area for “cold” items. However, during slow times, the restaurant wants to staff only one prep area and route both “hot” and “cold” items to that area.

This is easily done by:

- Linking items to separate kitchen printer groups for “hot” and “cold” items
- Setting routing instructions in the [System Type].dat file (i.e. sps_1000.dat)
- Setting the current period by sending a PLU descriptor to the MPAD Plus controllers

Typical Configuration Using Periods



In the schematic example above, two ECRs connected by IRC are connected to two MPAD Plus controllers via an MPAD Router. There are two types of menu items. Hot items are linked to Kitchen Video Group #1; cold items are linked to Kitchen Video Group #2. At lunch, hot & cold items are sent to different food prep stations; at all other times, both hot and cold items are sent to prep area #1.

[System Type].dat file Settings

Shown below are default settings and custom setting required for the 2-KVG/2-Period example described above. Note that new and changed information is highlighted:

Default Settings

```
[VIDEO]=1
[ROUTE]=1
[PERIOD]=ALL
[KVG]=ALL
[REG]=ALL
[DEST]=ALL
[END]

[VIDEO]=2
[ROUTE]=1
[PERIOD]=ALL
[KVG]=01
[REG]=ALL
[DEST]=ALL
[END]
```

Custom Settings

```
[VIDEO]=1
[ROUTE]=1
[PERIOD]=1
[KVG]=01
[REG]=ALL
[DEST]=ALL
[END]
[ROUTE]=2
[PERIOD]=2
[KVG]=01,02
[REG]=ALL
[DEST]=ALL
[END]

[VIDEO]=2
[ROUTE]=1
[PERIOD]=1
[KVG]=02
[REG]=ALL
[DEST]=ALL
[END]
[ROUTE]=2
[PERIOD]=2
[KVG]=01,02
[REG]=ALL
[DEST]=ALL
[END]
```

Changing .dat File Settings

Caution: .dat file formats are critical. Expected information must appear exactly in the correct line and character position. If the .dat file format is incorrect, the file will not load. You must take extreme care when making changes. If your file becomes corrupted, you can return to default by performing the ECR selection procedure again. (See “M PAD PLUS Setup” on page 3.)

When working with files, you may find it useful to mark, copy and paste information so the the correct formats are used. Use the following commands:

ALT M	Mark lines to be copied
ALT B	Copy marked information
ALT R	Insert copied information
ALT D	Delete marked information

Set the Current Period

The MAD Plus will change periods upon receipt of a PLU descriptor in the format: PERIOD=x, where x is period 1 through 5. For example, if you create a zero amount preset PLU, linked to the appropriate kitchen printer group, with the descriptor PERIOD=2, the MPAD Plus will shift to the routing instructions for period 2. To return to period 1, send a zero amount PLU with the descriptor PERIOD=1.

You may wish to create a macro sequence registering the appropriate PLU, then CASH to set periods. A time activated macro may be programmed for automated period selection.

MPAD Plus Operations

Receiving Orders

After the MPAD Plus has initialized, the standard order screen will display, showing 8 empty order boxes. Each MPAD Plus unit is capable of receiving and displaying up to 150 orders. Orders may be displayed 4 or 8 per screen.

As orders are entered at the ECR/POS system they will appear on the screen in one or more of the boxes. If more orders are received than can be displayed on the screen, an arrow will appear indicating the number of order boxes that are offscreen. To view these orders use the right arrow key. Use the left arrow key to return.

Above each order, is a green timer, indicating how long the order has been pending. Based on system setup options, the timer will turn from green to red after a predefined number of seconds, indicating that the order has not been processed within the appropriate time.

This allows the manager to easily spot possible production problems. A second time threshold is provided at which the timer will change to blinking red, indicating a problem in filling the order.

Bumping Orders

To remove an order from the MPAD Plus screen, press the numeric key (1-8) on the keypad that corresponds to the order to be deleted. If the order occupies more than one box, the order will be highlighted when the numeric key is pressed. To remove the order, press the [CLR] key.

Recalling Orders

As orders are bumped they are stored in a recall queue. Up-to 10 orders are stored. To display a previously bumped order, press the [REFRSH] key. Orders will be displayed in the reverse order of deletion (i.e. the most recent order first).

Each time [REFRSH] key is depressed the next previous bumped order will be displayed. Press the [ESC] key to exit.

If more than one person is to operate the same MPAD Plus, it may be necessary to MARK that the order is being worked on, so that two people are not working on the same order. This can be accomplished by selecting “DOUBLE KEY CLEAR” in programming,

To MARK an order, select the order using one of the numeric keys. Then press one of the 8 numeric keys again. This will set the first line to a different color. The color that is displayed is determined by the entry. Eight colors are available.

To utilize MARK orders feature the MPAD Plus must be configured for DOUBLE KEY CLEAR.

Reports

Another feature of the MPAD Plus is the Production Status Report. To display the Production Status Report press the [SUM] key. The system will display a screen showing the number of orders processed the average order time, process time and total time for those orders as well as order count by 30 second time period up to 12 minutes.

An operator can clear the production status data by pressing [CLR] with the Report displayed.

To exit the Status Report, press the [SUM] again. The M-PAD will return to the order screen.

KVS Serve Function Key

The SPS-2000 function key #247, *Serve Order*, can be used to bump orders from the video. You can select a specific cell by entering the cell number before touching the *Serve Order* function key.

Appendices

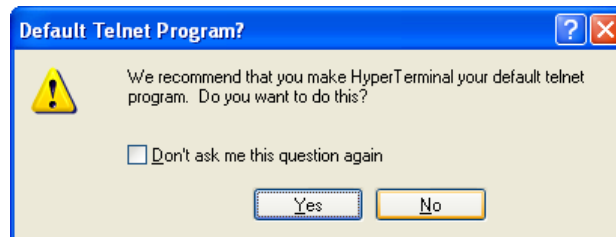
Updating MPAD Plus Flash ROM

If an updated program is necessary, CCR or MICROPLUS will supply the file: “SPS_MPAD.EXE”. This file will need to be sent to the *MPAD Plus* video controller. To complete this task, you will need:

- A PC with Microsoft Hyperterminal program. HyperTerminal is shipped as part of Window XP. If HyperTerminal is not available on your PC, you may wish to search the Internet for a download. Free trial versions are available.
- A standard DB9 to DB9 PC to ECR cable with a gender adaptor for the MPAD Plus COM1 connection.
- A PS/2 keyboard and Screen connected to the MPAD Plus.

Update Procedure

1. Connect your PC to the MPAD Plus using the cable described above. Connect the PC COM port to the port labeled COM1 on the MPAD Plus.
2. At your PC, start HyperTerminal. Choose **Start, Programs, Accessories, Communication, HyperTerminal**. At the *Default Telnet Program?* Dialog box, click **No**.



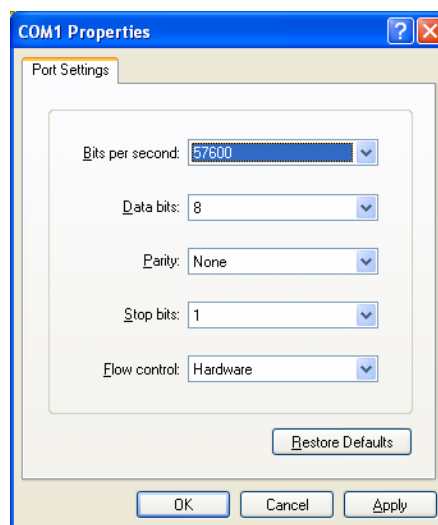
3. The *Connection Description* dialog will display. Enter a new connection name, i.e. MPAD, and click **OK**.



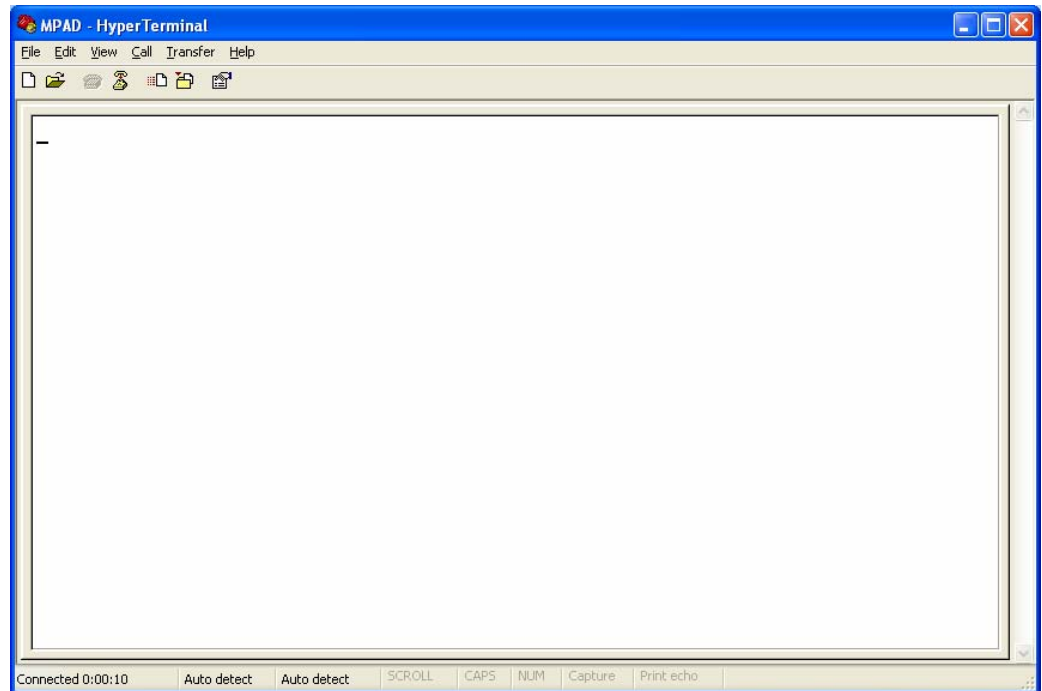
4. The *Connect To* dialog displays. Select the com port you are using and click **OK**.



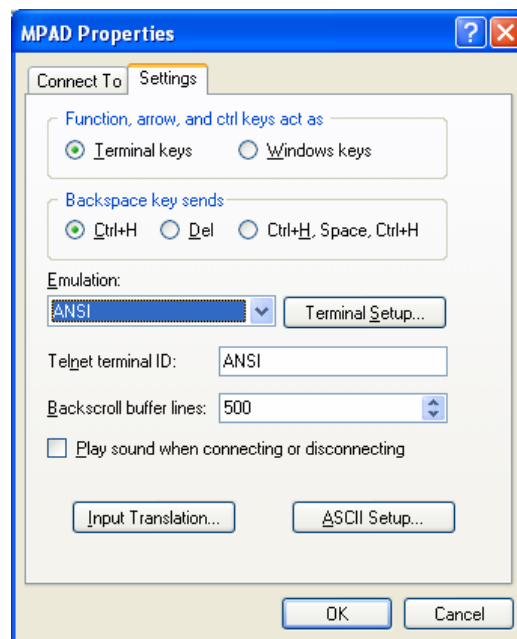
5. The appropriate *COM Properties* dialog box displays. Make the settings as shown: **57600** Bits per second, **8** Data bits, **None** parity, **1** Stop bit, and **Hardware** Flow Control. Click **Apply**.



- Click **OK**. The HyperTerminal window displays.

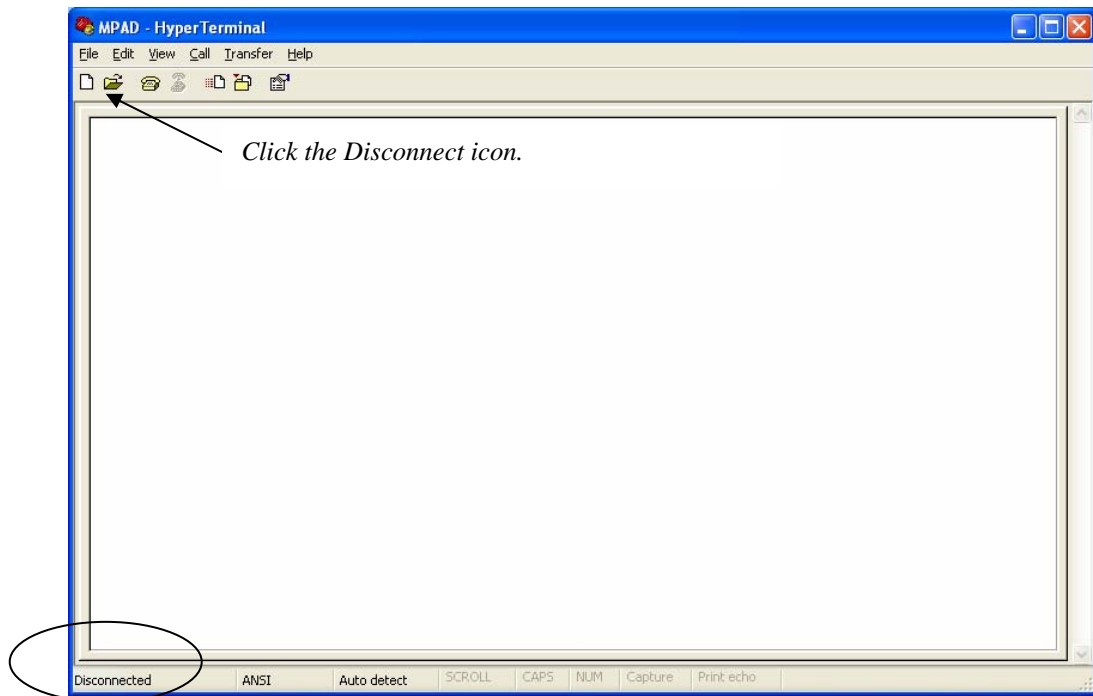


- Choose **Properties** from the **File** menu. From the *Properties* dialog box click the **Settings** tab.

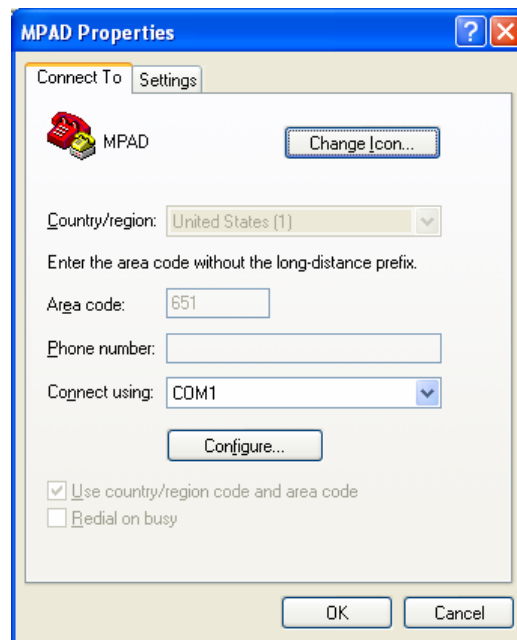


- At the **Emulation** drop-down list box, select *ANSI*.
- Click **OK**.

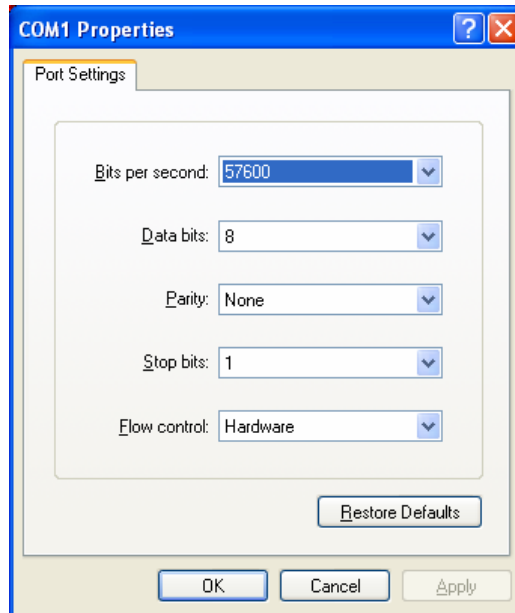
10. At the Hyperterminal window, click the disconnect icon.



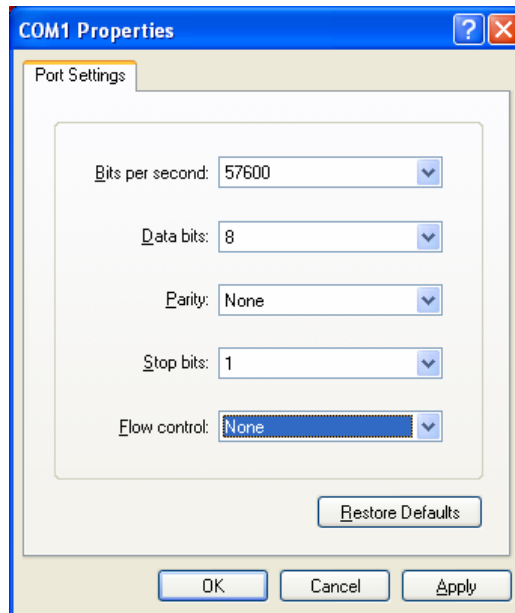
11. Choose **Properties** from the **File** menu.




12. At the *Connect To* tab, click **Configure**.



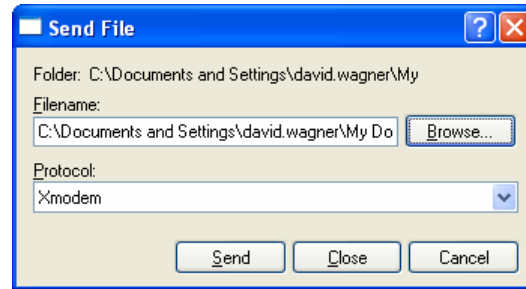
13. Change the *Flow Control* setting to **None**.



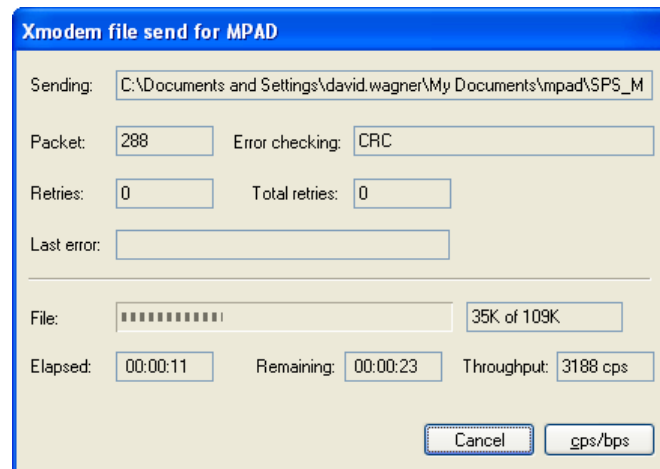
14. Click **Apply**.
15. Click **OK** to return to the COM Properties dialog, click **OK** again to exit.
16. Click the “connect”  in.
The message “connected” will display in the lower left corner of the HyperTerminal window.

17. Click the “send” icon

The Send File dialog box displays.



18. Click **Browse**. Locate the SPS_MPAD.exe file and click **Open**.
19. At the *Protocol* drop-down list box, select **Xmodem**.
20. Attach a PS/2 keyboard and screen to the MPAD Plus Video Controller.
21. Power up the MPAD Plus controller. Monitor the screen. When the message “Loading MPAD, depress.....” displays, press the <R> key on the keyboard (to receive xModem file transfer.)
22. The message “Enter filename to receive ?” displays. Type “D:SPS_MPAD.EXE”
23. At the PC, click **Send**.
24. At the MPAD Plus keyboard, press <Enter>.
25. The *Xmodem file send* dialog monitors the transfer.



26. The dialog closes automatically when the transfer is complete.
27. At MPAD Plus screen, the message “Enter Filename to receive ?” displays.
28. At the MPAD Plus keyboard, press <Enter>.
29. Type “COPY D: *.*”, press <Enter>.
30. The message “D:\SPS_MPAD.EXE”, “1 File(s) copied” displays.

31. At the C: prompt type: `COPY SPS_MPAD.exe C:\SPS_MPAD`
(`COPYspaceSPS_MPAD.EXEspaceC:\SPS_MPAD`)
The spaces must be entered in the correct areas or the file copy will not work.
32. Reboot the MPAD Plus Video Controller. Close HyperTerminal at the PC.

Logging

Creation of log files is available as a troubleshooting tool. In MPAD Plus versions after 1/11/08 the Log Files will automatically save to the non-volatile Drive. Prior to 1/11/08 the log information was saved to volatile memory and was lost when the Mpad Plus was shut off or lost power.

The Mpad plus has 20mg memory available for storing logged files.

How to Set Up Logging

1. From the 8 grid screen press “ALT K”. You will see a Period and Diagnostic menu.
2. Type “L”. You can now view data on KVS monitor as the MPAD Plus receives it. The Mpad Plus creates a folder called CCRLOG.
3. Press the escape key to return to the 8 grid box. The log will run in the background.

How to Save the Log Data

1. Before powering off the Mpad Plus press “ALT Q”.
2. Type “COPY D: CCRLOG.DAT”
3. If successful you will see a message “ 1 Files(s) copied.”

This command copies the log data from the MPAD Plus C drive (volatile memory) to the MPAD Plus D drive (non-volatile memory).

4. To view the log type “ALT Q” then type “TYPE CCRLOG.DAT”, and then press <ENTER>.

How to Save Log Data to a PC

1. Refer to “Updating MPAD Plus Flash ROM” on page 15. Follow steps 1-16.
2. At the Hyper Link main screen select the “RECEIVE” icon. Type in the destination of the data you are to receive.
3. At the *Protocol* drop-down list box, select **Xmodem**.
4. Attach a PS/2 keyboard and screen to the MPAD Plus Video Controller.
5. Power up the MPAD Plus controller. Monitor the screen. When the message “Loading MPAD” displays, press the <S> key on the keyboard (to receive xModem file transfer.) The MPAD Plus ins in transmit mode.
6. The message “Enter filename to send ?” displays.

Type “CCRLOG.DAT” to send the log file.

(You can also archive other system files, for example, type SPS_1000.dat for program files or MXKERNEL.DAT for MX files.)

7. Press <ENTER> to send data from Mpad to PC.
8. At the PC, click Receive.

If file data is transferred properly a message at the Mpad will display **SUCCESSFUL** and the **HYPER LINK** page will refresh to a blank page. If data transfer fails you will see a “Error During Transf” message at the MPAD Plus and the Hyper Link screen will not refresh.

[System Type].dat

```
;*****
;
;   Video Routing Parameters:
;
;       KVG ..... Kitchen Video Groups  (01 to 99... or 00-ALL)
;               Note ... KVG 00 = ALL
;
;       REG ..... Registers Assigned To The Video (01 to 24 or ALL)
;
;       DEST ..... Destinations  ( 00 to 04 or ALL)
;
;               00 = Unspecified
;               01 = Eat In
;               02 = Take Out
;               03 = track 1   (drive thru lane 1)
;               04 = track 2   (drive thru lane 2)
;
;
;       PERIOD .... Operation Time Periods (1 to 5) ... Lunch Dinner Etc.
;
;
;       ";" IN FIRST POSITION OF LINE = COMMENT LINE
;
;       Up to 5 route groups may be assigned to each video
;
;*****

[VIDEO]=1
[ROUTE]=1
[PERIOD]=ALL
[KVG]=ALL
[REG]=ALL
[DEST]=ALL
[END]

[VIDEO]=2
[ROUTE]=1
[PERIOD]=ALL
[KVG]=01
[REG]=ALL
[DEST]=ALL
[END]

[VIDEO]=3
[ROUTE]=1
[PERIOD]=ALL
[KVG]=ALL
[REG]=ALL
[DEST]=ALL
[END]

[VIDEO]=4
[ROUTE]=1
[PERIOD]=ALL
[KVG]=05
[REG]=01
[DEST]=ALL

[VIDEO]=6
[ROUTE]=1
[PERIOD]=ALL
[KVG]=ALL
[REG]=ALL
[DEST]=ALL
[END]
```

KVG (Kitchen Video Group):

If you are using multiple MPAD PLUS controllers, you can enter a specific KV group for the specific MPAD here.

```

;*****
;
;          GENERAL  18 CHARACTER ALPHA DEFINITIONS
;
;
;  NOTE 1 ... EACH 18 CHARACTER ALPHA DESCRIPTION
;             MUST BE BRACKETED WITHIN "/"
;
;             ie.....[ALPHA02]=  /***** CANCEL *****/
;
;  NOTE 2 ... DEFININING THE SUBTOTAL,TOTAL,STORE 1 OR STORE 2
;             ALPHAS WITH $$$$.$$ IN THE LAST 8 POSITIONS
;             WILL DIRECT THE SYSTEM TO INSERT THE APPROPRIATE
;             DOLLAR AMOUNT WHEN DISPLAYING THE ALPHA
;
;             ie.....[ALPHA04]=  /TOTAL      $$$$.$$/
;
;*****

[ALPHA01] =  /**** TRAINING ****/      ; TRAINING ALPHA
[ALPHA02] =  /**** CANCEL ****/      ; CANCEL ALPHA
[ALPHA03] =  /          /              ; SUBTOTAL ALPHA
[ALPHA04] =  /TOTAL      $$$$.$$/      ; TOTAL ALPHA
[ALPHA04] =  /-----/                ; TOTAL ALPHA
;                                     ; if alpha 4 is blank the cashier
;                                     ; name will be displayed as EOT

[ALPHA05] =  /* TRAY SUBTOTAL * /      ; TRAY SUBTOTAL ALPHA
[ALPHA06] =  /-----/                ; STORE 1 ALPHA
[ALPHA07] =  /PH-N-ORDER$$$$.$$/      ; STORE 2 ALPHA
[ALPHA08] =  /** CHANGE ORDER **/      ; CHANGE ORDER ALPHA
[ALPHA09] =  /**REG POWER FAIL**/      ; POWER FAIL ALPHA
[ALPHA10] =  /..... /                ; NO DESTINATION ALPHA
[ALPHA11] =  / EAT-IN /                ; EAT IN DESTINATION ALPHA
[ALPHA12] =  / TAKE-OUT /              ; TAKE OUT DESTINATION ALPHA
[ALPHA13] =  / DRV-TH1 /               ; DRIVE THRU 1 DESTINATION ALPHA
[ALPHA14] =  / DRV-TH2 /               ; DRIVE THRU 2 DESTINATION ALPHA
[ALPHA15] =  /1 /                     ; Default Serve Key
[ALPHA16] =  /Y /                     ; Use Alternate colors Y/N (Black Background)
[ALPHA17] =  /MULTI-VIDEO TEST /      ; STANDALONE:lvid=PCVGA;MULTI-VIDEO 2-4vid
[ALPHA17] =  /STANDALONEMPAD+VpB/      ; STANDALONE:lvid=PCVGA;MULTI-VIDEO 2-4vid
;                                     ; Add "-B" for beeper & "p" to send
;                                     ; Bumped orders via Com2
;                                     ; "V" For VERTICAL keypad
[ALPHA18] =  /1 /                     ; COMM PORT (1 or 2)
[ALPHA19] =  / Table # /               ; ALPHA USED WITH TABLE #
[ALPHA20] =  /Y8AUTOBUMP=000 /         ; Y=Tracking number sent from CCR3000?
;                                     ; EPROM Version 0.63 and later.
;                                     ; Also used to indicate autobump time
;                                     ; in minutes ... AUTOBUMP=000 to 255
;                                     ; S P E C I A L ... For ccr_8.exe
;                                     ; . the second position should be "8"
;                                     ; Add Q1 to display qty of 1
;                                     ; Put a I to indent modifiers

[ALPHA20]:
Choose one of the options offered
here:
autobump time, or
indent (I), or

[ALPHA21] =  /01 /                     ; Video 1 has this reg. as pseudo kp
[ALPHA22] =  /02 /                     ; Video 2 has this reg. as pseudo kp

[ALPHA23] =  /03 /                     ; Video 3 has this reg. as pseudo kp
[ALPHA24] =  /04 /                     ; Video 4 has this reg. as pseudo kp
[ALPHA25] =  /A,12 /                   ; RAM Drv:D Harddrive, C floppy only (match
;                                     ; drive letter in MVKERNEL [GENERAL])
[ALPHA26] =  /05 /                     ; Video 5 has this reg. as pseudo kp
[ALPHA27] =  /06 /                     ; Video 6 has this reg. as pseudo kp
[ALPHA28] =  /07 /                     ; Video 7 has this reg. as pseudo kp
[ALPHA29] =  /08 /                     ; Video 8 has this reg. as pseudo kp
[ALPHA30] =  / /                       ; Bottom of screen Destination 1,2,4
;                                     ; the system will add 10 to the reg #
[ALPHA31] =  / /                       ; Video 1 prioritization
[ALPHA32] =  / /                       ; Video 2 prioritization
[ALPHA33] =  / /                       ; Video 3 prioritization
[ALPHA34] =  / /                       ; Video 4 prioritization
[ALPHA35] =  / /                       ; Video 5 prioritization
[ALPHA36] =  / /                       ; Video 6 prioritization
[ALPHA37] =  / /                       ; Video 7 prioritization

```

```

[ALPHA38] = / / ; Video 8 prioritization
;[ALPHA39] = /SCOREBOARD / ; SCOREBOARD
[ALPHA39] = /N / ; Auto Elec. Journal Y/N & # months or SCOREBOARD
[ALPHA40] = /01,02,03,04 / ; Not .. Can't bump till paid VIDEOS
; 01,02,03,04
[ALPHA41] = / / ; Supress decimal point
[ALPHA42] = /01 / ; registers which bump by order #
[ALPHA43] = /132 / ; Color of TRAINING alpha(+128 for Blinking)
[ALPHA44] = /132 / ; Color of CANCEL alpha
[ALPHA45] = /0 / ; Color of SUBTOTAL alpha
[ALPHA46] = /14 / ; Color of TOTAL alpha
[ALPHA47] = /1 / ; Color of TRAY-SUBT alpha
[ALPHA48] = /0 / ; Color of STORE-1 alpha
[ALPHA49] = / / ; Color of STORE-2 alpha
[ALPHA50] = /132 / ; Color of Message lines (ie. change order/eat-in/takeout)

```

Mxkernel.ini

```
; *****
;   MXKERNEL.INI TEMPLATE
;   CONTAINS PARAMETER INFORMATION FOR MXKERNEL.EXE
;   PROMPTS BEGIN IN COLUMN 1, RESPONSES IN COLUMN 25
;   COMMENT STATEMENTS BEGIN WITH A SEMICOLON
;   BLANK LINES IGNORED
; *****

; *****
; G E N E R A L   I N F O
;   VIDEOS = 01 - 08 (for now)
;   2-POR/4-POR KDS communication board:
;   MC2000/MC4000 IRQ = 03,04,05,06 or 07
;   MC2000/MC4000 CONFIGURATION = 01-16
;   1st MX4000 BOARD = 02 (JP2= A=1-2, B=1-2, C=2-3, D=1-2) ...140-147
;   2nd MX4000 BOARD = 04 (JP2= A=1-2, B=2-3, C=1-2, D=1-2) ...190-197
;   MX4000 ADDRESS = B000/D800
;   PRIORITY TIME LIMIT = SECONDS
;   RUSH TIME LIMIT = SECONDS
;   LOAD AS TSR = YES/NO
;   RAM DRIVE = A/B/C/D/E <-MATCH ALPHA[25] in CCR3000.DAT
;   SUMMARY = ON/OFF
;   ERROR LOGGING = ENABLED/DISABLED
;   BUMP BAR TYPE = MICROPLUS/NCR/SEC
;   ALTERNATE PALETTE = ENABLED
; *****

[GENERAL]
VIDEOS                = 01
Device ID              = 01
MC2000 IRQ             = 05
MC2000 CONFIGURATION  = 17
1st MX4000 BOARD       = 02
2nd MX4000 BOARD       = 04
MX4000 ADDRESS         = B000
PRIORITY TIME LIMIT    = 60
RUSH TIME LIMIT        = 180
LOAD AS TSR            = YES
RAM DRIVE              = A
ERROR LOGGING          = DISABLED
BUMP BAR TYPE          = MICROPLUS
PARK DIRECTION         = UP
PRODUCTION STATS       = DISABLED
;DOUBLE KEY CLEAR      = YES
ALTERNATE PALETTE      = ENABLED
;CONTINUE LINE         = ENABLED

; *****
; V I D E O   S P E C I F I C
;   MODE = REGULAR/ELONGATED/SPLIT
;   TYPE = FOODPREP/EXPEDITER/DISABLED
;   KEYITEM = UP TO 10 PER SCREEN
; *****

[VIDEO 1]
MODE                  = REGULAR
TYPE                  = FOODPREP
REROUTE VIDEO        = 01
SUMMARY              = OFF
KEYITEM               = Jumbo Burger
KEYITEM               = HDog 1/4 LB
KEYITEM               = Chili Dog
KEYITEM               = SF TACO
KEYITEM               = 7-LAYER BUR
KEYITEM               = NACHO B/G
;ORDER BEEPER         = DISABLED
;AUTO BUMP            = 2

;
;[VIDEO 2]
;MODE                  = REGULAR
;TYPE                  = FOODPREP
```

Device ID:

In single MPAD PLUS systems, this value will always be set to 01. If multiple MPAD PLUS controllers are used with a router, each will be assigned a unique device ID, i.e. 01, 02, 03, etc.

MODE:

REGULAR = 8 cells; ELONGATED = 4 cells;
SPLIT = 8 cells, but top/bottom split for eat in/drive thru separation.

KEYITEM:

Enter key item descriptors here.

```

;REROUTE VIDEO      = 01
;SUMMARY            = OFF
;KEYITEM            = TACO BEEF
;KEYITEM            = BEAN BURR
;KEYITEM            = BURR SUPRM
;KEYITEM            = DBL DEC TC
;KEYITEM            = SF TACO CX
;KEYITEM            = SF TACO
;KEYITEM            = 7-LAYER BUR
;KEYITEM            = NACHO B/G
;KEYITEM            = PEPPRNI PPP
;KEYITEM            = SUPREME PPP
;ORDER BEEPER       = ENABLED
;AUTO BUMP          = 3
;
;[VIDEO 3]
;MODE               = REGULAR
;TYPE               = EXPEDITER
;TYPE               = FOODPREP
;REROUTE VIDEO      = 01
;SUMMARY            = OFF
;KEYITEM            = TACO BEEF
;KEYITEM            = BEAN BURR
;KEYITEM            = BURR SUPRM
;KEYITEM            = DBL DEC TC
;KEYITEM            = SF TACO CX
;KEYITEM            = SF TACO
;KEYITEM            = 7-LAYER BUR
;KEYITEM            = NACHO B/G
;KEYITEM            = PEPPRNI PPP
;KEYITEM            = SUPREME PPP
;ORDER BEEPER       = ENABLED
;AUTO BUMP          = 1
;;
;[VIDEO 4]
;MODE               = REGULAR
;TYPE               = FOODPREP
;REROUTE VIDEO      = 01
;SUMMARY            = OFF
;KEYITEM            = TACO BEEF
;KEYITEM            = BEAN BURR
;KEYITEM            = BURR SUPRM
;KEYITEM            = DBL DEC TC
;KEYITEM            = SF TACO CX
;KEYITEM            = SF TACO
;KEYITEM            = 7-LAYER BUR
;KEYITEM            = NACHO B/G
;KEYITEM            = PEPPRNI PPP
;KEYITEM            = SUPREME PPP
;ORDER BEEPER       = ENABLED
;AUTO BUMP          = 8
;
;[VIDEO 5]
;MODE               = REGULAR
;TYPE               = FOODPREP
;REROUTE VIDEO      = 01
;SUMMARY            = OFF
;KEYITEM            = HAMBURGER
;KEYITEM            = COKE
;ORDER BEEPER       = ENABLED
;AUTO BUMP          = 8
;;
;[VIDEO 6]
;MODE               = REGULAR
;TYPE               = FOODPREP
;REROUTE VIDEO      = 01
;SUMMARY            = OFF
;KEYITEM            = HAMBURGER
;KEYITEM            = COKE
;ORDER BEEPER       = ENABLED
;AUTO BUMP          = 8
;;
;[VIDEO 7]
;MODE               = REGULAR
;TYPE               = FOODPREP

```

```

;REROUTE VIDEO          = 01
;SUMMARY                = OFF
;KEYITEM                = HAMBURGER
;KEYITEM                = COKE
;;ORDER BEEPER          = ENABLED
;AUTO BUMP              = 8

;[VIDEO 8]
;MODE                   = REGULAR
;TYPE                   = FOODPREP
;REROUTE VIDEO          = 01
;SUMMARY                = OFF
;KEYITEM                = HAMBURGER
;KEYITEM                = COKE
;;ORDER BEEPER          = ENABLED
;*****
; R E G I S T E R   S P E C I F I C
;   TYPE = COUNTER/DRIVE THRU
;   DISPLAY LOC's = TOP/BOTTOM
;   ROUTES = Y/N (for each video)
;   ALT ROUTES = Y/N (for each video)
;*****

[REGISTER 1]
TYPE                = COUNTER
DISPLAY LOCATION    = TOP
ROUTES              = YYYY
ALTERNATE ROUTES    = YYYY

[REGISTER 2]
TYPE                = COUNTER
DISPLAY LOCATION    = TOP
ROUTES              = YYYY
ALTERNATE ROUTES    = YYYY

[REGISTER 3]
TYPE                = COUNTER
DISPLAY LOCATION    = TOP
ROUTES              = YYYY
ALTERNATE ROUTES    = YYYY

[REGISTER 4]
TYPE                = DRIVE THRU
DISPLAY LOCATION    = BOTTOM
ROUTES              = YYYY
ALTERNATE ROUTES    = YYYY

[REGISTER 11]
TYPE                = DRIVE THRU
DISPLAY LOCATION    = BOTTOM

ROUTES              = YYYY
ALTERNATE ROUTES    = YYYY

[OTHER]
SOFTMUX             = ENABLED

```

Backing-Up Program Files

If you need to backup the current Mpad Plus programs, the [System Type].dat (SPS-1000.dat) or the MXKERNEL.ini, you can save these files directly to the Mpad Plus. You can leave the files on Mpad Plus. In the event you have to reset the Mapd Plus back to factory default, you will have a backup of your program.

Back-up

To save the program files, at the C: prompt type:

```
COPY^ SPS_1000.DAT^ SPS_1000.old
```

(Where ^ represents a space)

Press <ENTER>

To save the Mxkernel.ini file, at the C: prompt type:

```
COPY^ mxkernel.ini^ mxkernel.old
```

(Where ^ represents a space)

Press <ENTER>

Restore

To restore the Mpad Plus to your backup files, at the C: prompt type:

```
COPY^SPS_1000.old^SPS_1000.DAT (
```

(Where ^ represents a space)

Press <ENTER>

Type:

```
COPY^mxkernel.old^mxkernel.ini
```

(Where ^ represents a space)

Press <ENTER>

MPAD Plus Compatible Platforms

Note: SAM4s ECRs with KP output, i.e. ER-285M, ER-380/380M, ER390/390M, ER-5200 series, ER-600, ER-650R, ER-655 use Samsung 650 (SAM650MP) selection.

MAD+ Compatible Platforms			
** Release 1.18		2/19/08** [SETUP]	
AFJ Systems Format 1	[AFJ_MPAD]	Pinnacle	[PINN_MP]
AFJ Systems Format 2	[AFJ2MPAD]	PixelPoint KP Emulator	[PIXEL_PT]
Aldello/NextPOS (Batch)	[NEXTPOSM]	Quorion	[QUORION]
America POS	[AMERICA]	RCS (Batch)	[RCS_MPAD]
Amigo Systems	[AMIGO]	RCS (L-B-L)	[RCSLBL_M]
Aloha (Batch)	[ALOHA_MP]	Rest. Manager (Batch)	[ACT_MPAD]
Ash Systems Inc.	[ASH_MPAD]	Rest. Manager (L-B-L)	[ACT_L_MP]
BEpoz	[BEPOZ]	Rest. Manager (L-B-L Touch)	[ACTTOUCH]
Black Board	[BLK_B_MP]	Rest. Mgnager (Batch Touch)	[ACTMPADT]
Bump-TO-Video	[BUMP2VID]	Restaurant-Pro	[REST_PRO]
Bump-To With Prod. Screen	[BUMPPROD]	RMS TOUCH	[RMSTOUCH]
Cash Systems Ind.	[CASHSYSI]	R-Power (BATCH)	[RPOWER]
ComCASH	[COMCASHM]	R-Power (L-B-L)	[RPOWER_L]
Casio 5000	[M_POS_L]	Sable	[SABLE_MP]
Casio TK 6000/6500/7500	[TK7500MP]	<u>Samsung 650</u>	<u>[SAM650MP]</u>
Casio 2000/6000/8500 (Batch)	[QT2K232M]	<u>Samsung SPS 1000/2000/7000</u>	<u>[SPS_MPAD]</u>
Casio 2000/6000/8500 (LBL)	[QT2KLBLM]	<u>Samsung SPS Elo Touch</u>	<u>[SPSMPADT]</u>
<u>CRS 2000</u>	<u>[CRS2K_MP]</u>	<u>Samsung SPS Fujitsu Touch</u>	<u>[SPSMPADF]</u>
<u>CRS 3000</u>	<u>[CRS 3000]</u>	<u>Samsung 6500 (Batch)</u>	<u>[SAMSUNGMP]</u>
<u>CRS 4000 / NEC 4000/5000</u>	<u>[CRS4K_MP]</u>	<u>Samsung 6500 (L-B-L)</u>	<u>[S6500_MP]</u>
CYPLEX Systems	[CYPLEXMP]	Select Elec. Remote Client	[R_CLIENT]
Digital Dining	[MENUSWDM]	System 3	[SYS3_MP]
DataSym 6000 FF	[DATASYM]	Sharp UP-700	[S_UP700M]
DINERWARE	[DINER_W]	Sharp 750/770	[S750MPAD]
EZ-MINER	[EZMINER]	Sharp 770 (L-B-L)	[S770L_MP]
Future Systems	[FUTURE]	Sharp 3300/3500 (Batch)	[S3300BMP]
Focus Systems	[FOCUS_MP]	Sharp 3300/3500 (L-B-L)	[UP3300MP]
Fidelity Systems GPOS	[GPOS]	Soft-Touch	[S_TOUCHM]
Fiesta Systems	[FIESTAMP]	SPAN Video With Production	[SPANPROD]
FreePOS	[FREEPOS]	Silverware POS	[SILVER_W]
Gala Systems	[GALA_MP]	Software Data Sys TotalCard	[TOT_CARD]
Gilbarco	[GIL_MPAD]	Trade Winds POS	[T_WINDS]
GPOS	[GPOS]	TEC 27/36/3700	[TECQS_MP]
Golden Touch	[GOLDEN_M]	TEC 3600/3700 Post Process	[TECPOST]
MicroSale (Batch)	[MIC\$_BMP]	TEC 27/36/3700 KP Emulator	[TEC_PRT]
MicroSale (L-B-L) Serial	[MIC\$MPAD]	TEC FS-2600	[FS2600MP]
MicroSale (L-B-L) Ethernet	[MIC\$_TCP]	Trim-POS KP Emulator	[TRIM_PRT]
Micros E7 / 3700	[MICROSE7]	Trim-POS Flash-POS	[TRIMFLSH]
Micro POS	[M_POS_L]	Uniwell 850/890/915 (TCP)	[U850_TCP]
NextPOS/Aldello (BATCH)	[NEXTPOSM]	Uniwell 915 (UDP)	[U915_UDP]
Optima Systems	[OPTIMA]	Vectron	[VEC_MPAD]
Order Mate	[ORD_MATE]	Volante	[VOLANTE]
Palm Teq	[PALMTEQ]	Wells POS	[WELLS]
PC-NET	[PC_NET]		
Penny Lane	[PennyL_M]		
Plexis	[M_POS_L]		

MPAD Plus Software Revision History

Version 05/21/08

Software Enhancements:

- Merchandise Return items not displaying on the MPAD Plus monitor. NOTE: The REFRESH FEATURE is NOT ACTIVE on this version.

Version 04/24/08

New Feature:

- Added refresh feature. Items, which were voided at the ECR, previously added a red flashing descriptor with a minus sign signaling the cook to not prepare. The REFRESH feature will edit the order and send ONLY the necessary items to be prepared. This will clean up the KVS display for the cook making the screen easier to read and accurate. This feature works in BOTH REAL TIME and BATCH MODE.

Version: 04/14/08

Software Enhancements:

- **GO SUB 1831 Error.** Cause: After bumping an order with the KVS bump bar a power fail at the ECR connected to the MPAD Plus will cause the MPAD Plus to go to C prompt.
- **Mpad beeping when no order displayed.** In a multi MPAD set up, if an MPAD was set not to accept a KVG from an ECR it would still BEEP.
- **Lost item during Power Fail during an order.** While KVS and ECR are idle and a power down/power up at the ECR would occur, the first item from the first order sent to the KVS would not appear.
- **Dropped item on the first order after a power fail.** With the ECR set to send to the KVS in REAL TIME, while in an active order with some items on the KVS display the ECR is powered down then powered up. The FIRST item from the FIRST order sent to the KVS after powering up the ECR connected to the MPAD Plus was dropped.

New Feature:

- Option to remove beeper notification on items not going to all MPAD Plus units in a multi-MPAD Plus system. To enable this feature go SPS_1000.dat programming in each MPAD Plus in the system. In the [KVG] programming option specify the KVG number(s) that are to go to this specific MPAD Plus. Ex. 01,02,03. If you leave the [KVG] at ALL the MPAD Plus beeper will sound even though there is no item to display at that specific video. The Device ID number in the mxkernel program of each MPAD Plus determines the video # of that MPAD Plus.

Version: 03/18/08

Software Enhancements:

- MPAD Plus would BEEP even though no orders appear on the KVS display.

Additional programming required to disable the BEEP:

- Press ALT Q, SPS_1000.dat, cursor down to the VIDEO programming.
- In [video] programming enter the KVS groups to display.
- In the remaining [video] programming enter 99 as the KVG #
- For a 1-Mpad system you would set the programming for “Video 1”.
- For Video’s 2 thru 6 enter 99 as the KVG # (assuming that 99 is not used as a KVG group #.)

For example in a Multi Video MPAD system each MPAD is given a Device ID # in the MX Kernel.ini programming. In the SPS_1000.dat programming there are up to 6 videos

Version: 02/07/08

New Features:

- **Option for changing the KVS Period added.** Create a PLU for each KVS period. Program these PLU’s to go to the KVS. PERIOD=1, PERIOD=2, PERIOD=3, PERIOD=4, PERIOD=5. To change the KVS Period at the ECR press the PERIOD=X PLU and press cash.
- **Null Characters discarded when sent from ECR.** When the ECR is powered off and when the ECR is powered on a set of Null Characters are sent to the KVS. The KVS would attach this Null Character set to the next order sent from the ECR. The first item of the order would be corrupt and not appear on the Video.

Version: 01/23/08

New Features:

- **Additional Alpha characters were added for use with the SPS-2000.** Prior to this version if the characters from the ETC page were used in the ALPHA programming, these characters would appear as garbage on the KVS monitor.
- **Condiment indent feature added.** At Alpha 20 in the SPS_1000.dat programming enter in a capitol I.

Manual Revision Record

Edition	Date published	Revision contents
V1.0	2/7/2008	Revision 1.0
V1.1	2/18/2008	Updated touch screen calibration instructions; updated Flash Update instructions, step #31.
V1.2	2/21/2008	Updated cable info p.8 – RJ45 for ports 3-5 on SPS-2000
V1.3	4/16/2008	Added platform list.
V1.4	6/11/2008	Added Software Revision History
V1.5	6/18/2008	Added Backup/Restore