



# Key Images

## 1. Where to find. . .

### A. Check the CCR Image Library

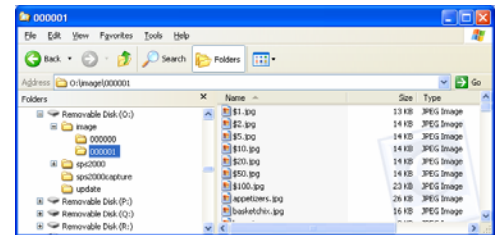
1. Visit [www.centralcash.co.za](http://www.centralcash.co.za)
2. Log in
3. Go to <http://www.centralcash.co.za>
4. Download "Final Images1002.zip"

### B. Make your own

1. Maximum image size:  
1 x 1 size keys is 60 x 50 pixels  
2 x 2 size keys can be up to 120 x 100 pixels  
1 x 2 size keys can be 120 x 50 pixels  
2 x 1 size keys can be 60 x 100 pixels.)
2. Use a graphic program such as Microsoft Paint to re-size larger images.
3. Formats Supported: .gif, .tif, .jpeg, .bmp.  
(.wmf cannot be used.)
4. File name must be less than 12-characters.

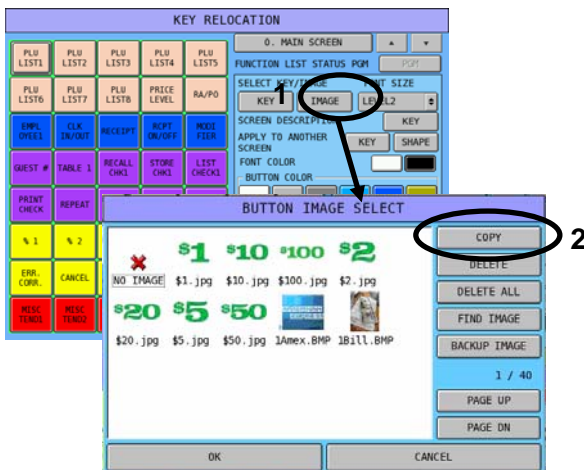
## 2. Load to SD or USB. . .

Copy image files to the SD/USB card at:  
**image/store# or name**



## 3. Load in SPS-2000

1. Place SD/USB card in SPS-2000.
2. From Key Relocation screen (S Mode or P Mode) touch **IMAGE** and then **COPY**.  
Images will be added.



## 4. Apply Images to Keys. . .

1. From Key Relocation screen (S Mode or P Mode) touch the location where you wish to add an image.
2. Touch **IMAGE**.
3. Find the image you wish to use and touch it to select it.
4. Touch **OK**.
5. The image will be added to the selected key location



# Screen Saver Logo

## 1. Preparing Images(s) . .

There are two screen saver options:

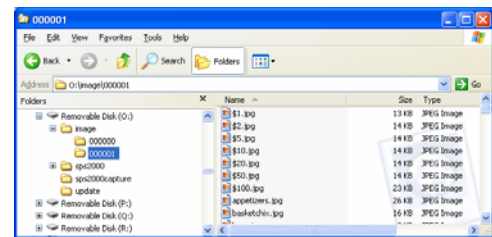
- A single image that moves in patterns across the screen
- Up to 50 different images that can be displayed in sequence

Image Specifications:

- Name single-image screen savers "logo.jpg"
- Name sequence images "logo##.jpg" (where xx is 01 to 50, the sequence number)
- Maximum logo size:  
600 pixels (w) x 400 pixels (H)  
Logos work best under 100K in size

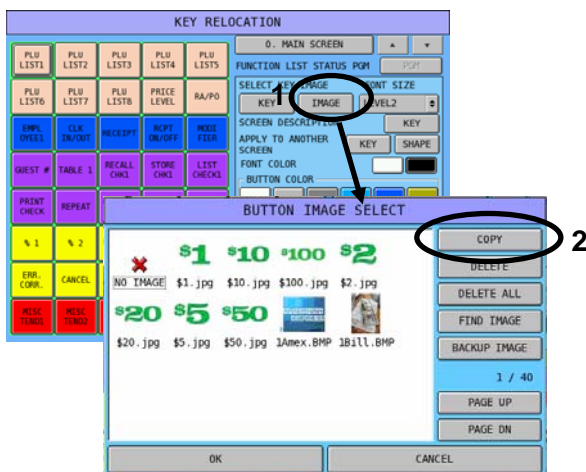
## 2. Load to SD or USB. . .

Copy image files to the SD/USB card at:  
**image/store#** or **name**



## 3. Load in SPS-2000

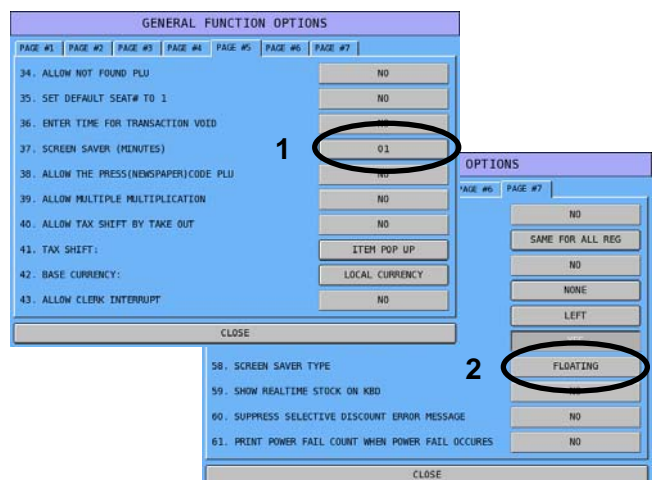
1. Place SD/USB card in SPS-2000.
2. From Key Relocation screen (S Mode or P Mode) touch **IMAGE** and then **COPY**.  
Images will be added.



## 4. Select Screen Saver Options. . .

Select the time the SPS-2000 must be idle before the screen saver starts (1-99 minutes):

1. Go to P/SYSTEM OPTIONS/GENERAL FUNCTION OPTIONS/PAGE #5/Option #37  
Select **FLOATING** (single image) or **ROTATING** (multiple images) screen saver type:
2. Go to P/SYSTEM OPTIONS/GENERAL FUNCTION OPTIONS/PAGE #7/Option #58



# Keylink Background Images

## 1. Preparing Images(s) . .

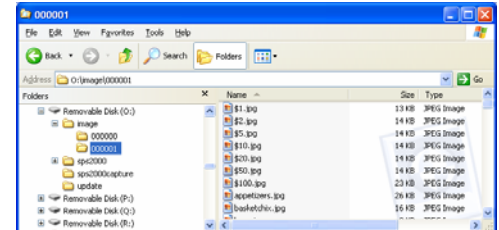
When many keys on a keylink are inactivated you have the option of displaying a background image instead of blank space.

- The image size is 320 x 425 pixels (this fills the entire keylink panel area)
- The background image file name(s) should be "flist\_imgxxx.jpg", where xxx means the keylink number, 001 through 200.
- The extension must be .jpg (with lower case).



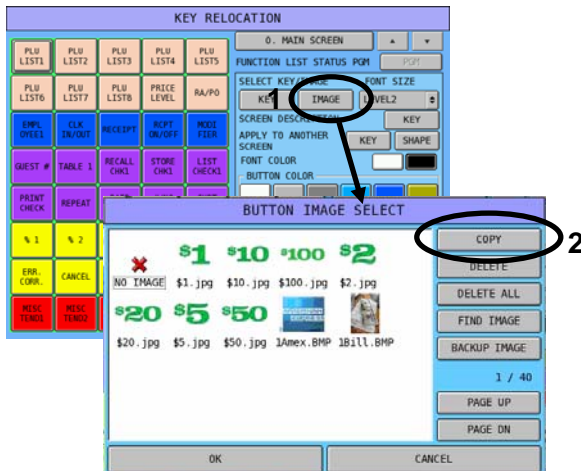
## 2. Load to SD or USB . .

Copy image files to the SD/USB card at:  
**image/store# or name**



## 3. Load in SPS-2000

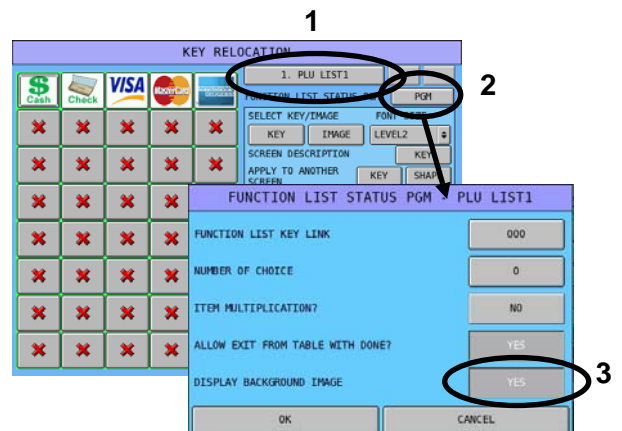
1. Place SD/USB card in SPS-2000.
2. From Key Relocation screen (S Mode or P Mode) touch **IMAGE** and then **COPY**. Images will be added.



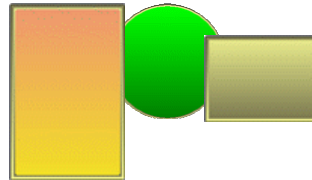
## 4. Select Background Display. . .

Set the DISPLAY BACKGROUND IMAGE option to YES.

3. Go to P or S/KEY RELOCATION and select the appropriate Keylink
4. Set the inactive location to "X", then touch PGM
5. Set DISPLAY BACKGROUND IMAGE to YES



# Table Shapes and Backgrounds



## 1. Where to find. . .

The default table management feature provides seven standard table shapes (squares and rectangles). Each shape is provided in three colors: pink, orange and green, representing empty, open, and printed check tables, respectively. Eight solid colors are available as background for the table management screen. When desired, SPS-2000 programmers can replace these standard shapes and colors with different or custom shapes and colors.

### A. Check the CCR Image Library

1. Visit [www.centralcash.co.za](http://www.centralcash.co.za)
2. Log in
3. Go to <http://www.centralcash.co.za>
4. Download "[std-color\\_table\\_images.zip](#)" to find additional table shapes, including round tables, in the standard color scheme.
5. Download "[custom-color\\_table\\_images.zip](#)" to find additional table shapes, including round tables, in a different color scheme.

### B. Make your own table shapes and backgrounds.

1. Use a graphic program such as Microsoft Paint.
2. Refer to the chart below to determine the file name and maximum size for each table shape.
3. In addition to the standard white background, seven alternative table backgrounds are available. Each background image is an 80 x 80 pixel image that is replicated as the screen background. The seven available background images must be named Tableback\_1.jpg, Tableback\_2.jpg, etc., through Tableback\_7.jpg.

	Empty Table Name/Size	Existing Table Name/Size	Printed Table Name/Size
Table Shape1	Tableshape1_1.gif 77 x 57 pixels	Tableshape1_2.gif 77 x 57 pixels	Tableshape1_3.gif 77 x 57 pixels
Table Shape2	Tableshape2_1.gif 117 x 57 pixels	Tableshape2_2.gif 117 x 57 pixels	Tableshape2_3.gif 117 x 57 pixels
Table Shape3	Tableshape3_1.gif 157 x 57 pixels	Tableshape3_2.gif 157 x 57 pixels	Tableshape3_3.gif 157 x 57 pixels
Table Shape4	Tableshape4_1.gif 75 x 75 pixels	Tableshape4_2.gif 75 x 75 pixels	Tableshape4_3.gif 75 x 75 pixels
Table Shape5	Tableshape5_1.gif 115 x 115 pixels	Tableshape5_2.gif 115 x 115 pixels	Tableshape5_3.gif 115 x 115 pixels
Table Shape6	Tableshape6_1.gif 77 x 117 pixels	Tableshape6_2.gif 77 x 117 pixels	Tableshape6_3.gif 77 x 117 pixels
Table Shape7	Tableshape7_1.gif 77 x 157 pixels	Tableshape7_2.gif 77 x 157 pixels	Tableshape7_3.gif 77 x 157 pixels

## 2. Load to SD or USB. . .

Copy image files to the SD/USB card as **image/store#** or **name**



## 3. Load in SPS-2000

1. Place SD/USB card in SPS-2000.
2. From Key Relocation screen (S Mode or P Mode) touch **IMAGE** and then **COPY**. Images will be added and will be available to select from the S Mode Table Management program.

