

Installing Software Using the TFTP Server Method

This software installation method allows you to update any of the SPS-2000 program areas selectively using a network connection. You must use this method if Boot ROM or MICOM updates are required.

A. Download SPS-2000 Software Files

Go to the SPS-2000 dealer support page of www.centralcash.co.za and download the zip file for the most current complete software version.

Note: The process used to download and unzip the software files will differ depending upon the operating system and file compression utility used on your PC. One example is shown below. Your procedures should be similar.

1. From the SPS-2000 Support page of www.centralcash.co.za locate the most current complete version. Right-click on the file, select Open, and then click the Open button on the file dialog box.

2. After the file downloads, open WinZip and extract the files to a designated folder on your PC.

3. Choose a folder where you wish the extracted files to be located. Make a note of the folder location.

SPS-2000 operating system and application files include:

- | | |
|--------------|---|
| zImage | (Linux O/S file) |
| app.yaffs | (Application file) |
| Bootrom.bin | (Boot ROM) |
| Micom.bin | (MICOM file) |
| NandBoot.bin | (Bootting program in case normal booting fails) |
| Ramdisk.gz | (Linux O/S zip file) |
| xlib.yaffs | (Contains font, graphic library, etc.) |

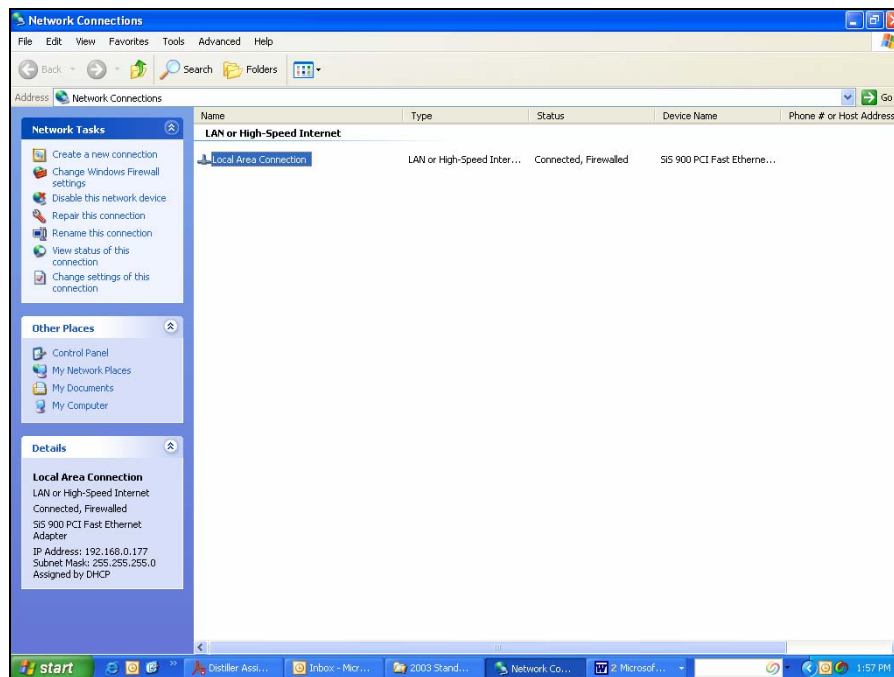
B. Set TCP/IP Protocol Options

At your PC, you must set the network IP Address to:

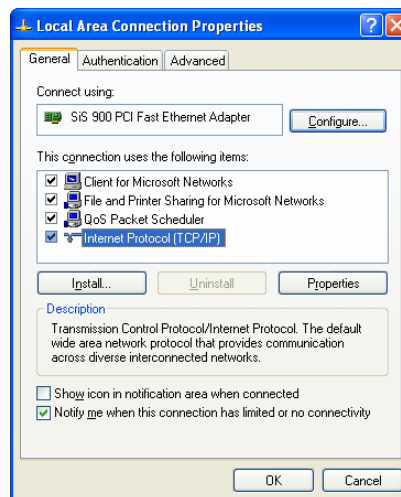
IP Address	192 . 168 . 0 . 2
Subnet Mask	255 . 255 . 255 . 0
Gateway	192 . 168 . 0 . 1

Using the following procedure if you are using Windows XP (other Windows operating systems use similar procedures):

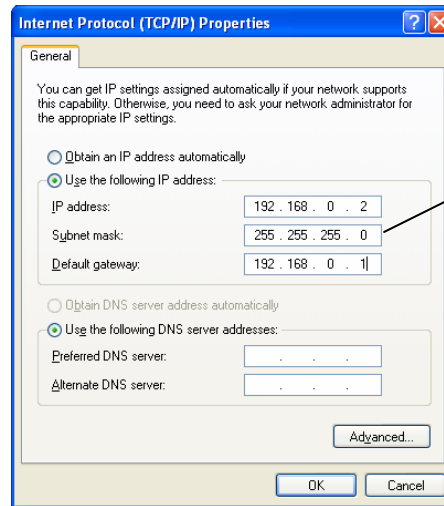
1. Click **Start, Settings, Network Connections**. The *Network Connections* dialog displays:



2. Select the Local Area Connection listing and right-click. Select **Properties** from the sub-menu to display the *Local Area Connection Properties* dialog box.



3. Select the Internet Protocol TCP/IP listing and click the Properties command button.



CAUTION:

If you are changing your normal network settings to connect to the SPS-2000, be sure to restore your settings after SPS-2000 Communications are complete.

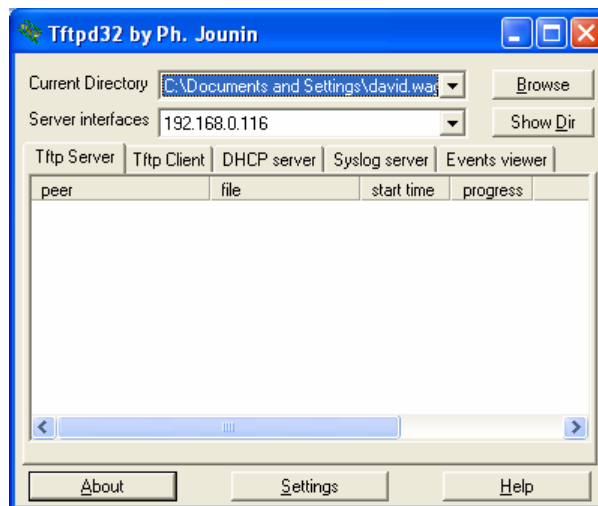
4. Click the "Use the following IP address" option button and enter the settings displayed in the example above.
5. Click **OK**, and then click **OK** to close the Local Area Connection Properties dialog box.

C. Install and Start the TFTP Server

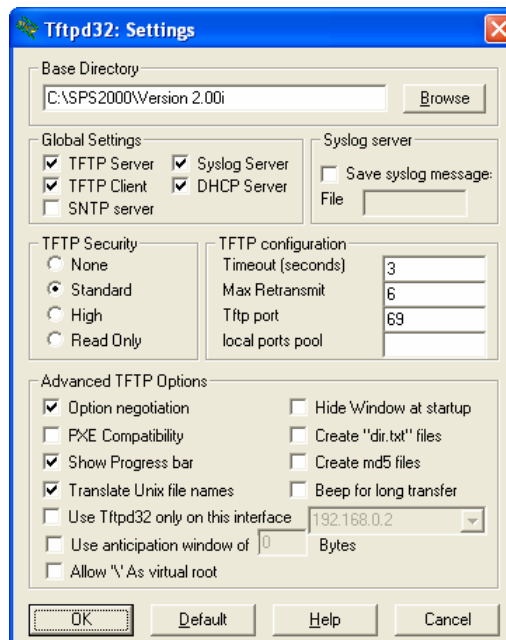
TFTP Server Note: CCR now recommends the tftpd32 server program. Tftpd32 has a smaller footprint and works with all operating systems. (SolarWinds 2003 TFTP Server is an acceptable alternative.)

You must first source and install the TFTP server.

1. Download the “tftpd.32.300.zip” file from the SPS-2000 dealer support page.
2. Extract the tftpd32.exe file from the zip file.
3. Connect the SPS-2000 to the PC using a “crossed network cable” and the LAN port on the SPS-2000.
4. Double click the tftpd32.exe file from the zip file. The server window displays:



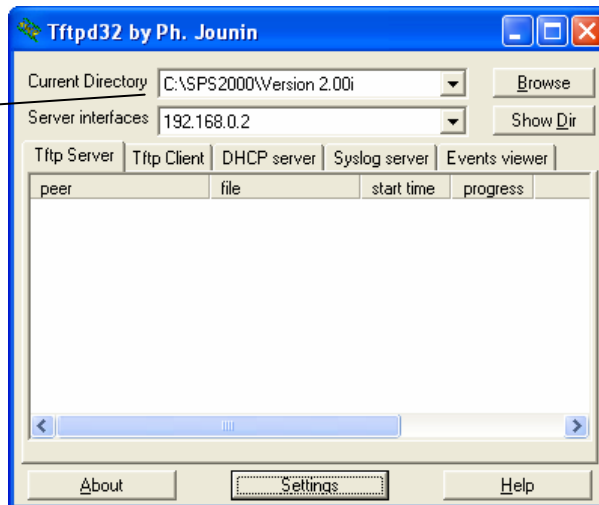
5. Click **Settings**.



6. Click **Browse**. Browse to the folder that contains the current SPS-2000 software. Click **OK**.
7. Click the **Events viewer** tab. From this tab you will monitor the TFTP Server application window when communication is taking place.

NOTE: Do not close the TFTP Server application.

Note the path displays where the program files are located and the IP address displayed is **192.168.0.2**



D. Install the Updated Software

Power down the SPS-2000 (the main power switch is located on bottom of SPS-2000 in the right-rear corner).

Upgrade the Micom

1. Hold front power button down.
2. Turn SPS-2000 main power switch **ON** while holding down front power button.
3. Touch [1][2][8][7] for system password.
4. Touch **SYSTEM MENU**.
5. Touch **MICOM DOWNLOAD**.
6. Touch **YES** when prompted “COPY MICOM FILE?”.
7. The ECR display will monitor the progress of the MICOM download (25%, 50%, 75%, 100%). When successful the TFTP Server window will display “Sent micom.bin to...”.

Upgrade the BOOT ROM

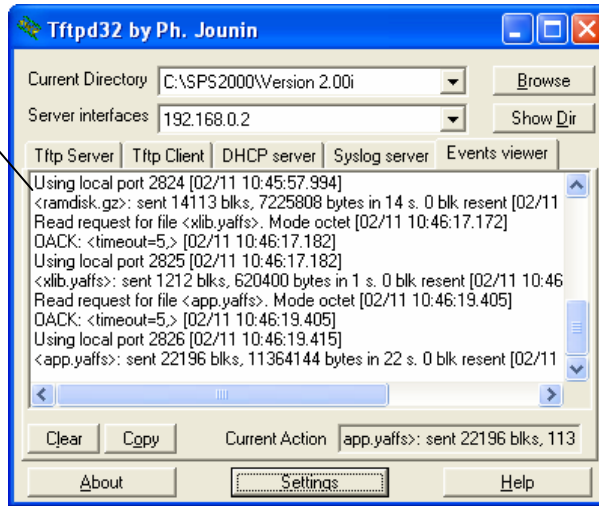
1. Power down the SPS-2000 (the main power switch is located on bottom of SPS-2000 in the right-rear corner).
2. Hold front power button down.
3. Turn SPS-2000 main power switch **ON** while holding down front power button.
4. Touch [1][2][8][7] for system password.
5. Touch **SYSTEM MENU**.
6. Touch **BOOT UPDATE**.
7. Touch **YES** when prompted “COPY BOOTLOADER?”.
8. The ECR display will first read: “Downloading BootRom.bin . . .” and then will display location updates until the message “Finished” displays when complete. When successful the TFTP Server window will display “Sent BootRom.bin to...”.

Upgrade the Application Software

1. Power down the SPS-2000 (the main power switch is located on bottom of SPS-2000 in the right-rear corner).
2. Hold front power button down.
3. Turn SPS-2000 main power switch **ON** while holding down front power button.
4. Touch [1][2][8][7] for system password.
5. Touch **SYSTEM MENU**.
6. Touch **COPY ALL**.
7. Touch **YES** when prompted “COPY ALL FOR THE NAND FLASH?”.

8. The ECR display will monitor file downloads. The message “Image writing finished!!” displays when complete. When successful the TFTP Server window will display “Sent . . .” for each file as shown below.

Monitor the TFTP Server screen to review the progress of the file downloads. When data is being transmitted, the message “Sending. . .” displays. When complete, the message “Sent. . .” displays.



Perform an ALL Clear

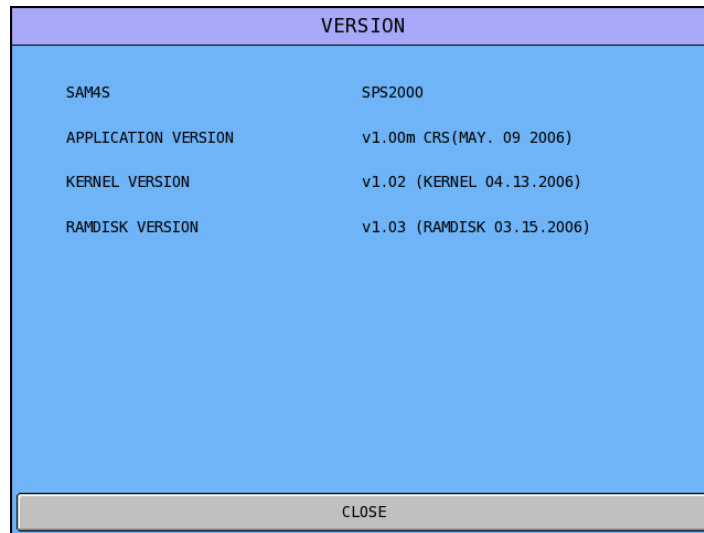
1. Power down the SPS-2000 (the main power switch is located on bottom of SPS-2000 in the right-rear corner).
2. Hold front power button down.
3. Turn SPS-2000 main power switch **ON** while holding down front power button.
4. Touch [1][2][8][7] for system password.
5. Touch **ALL CLEAR**.
6. Touch **YES** when prompted “ALL CLEAR THE MACHINE?”.
7. The SPS-2000 will reboot.
8. Enter the station number after the station reboots: [1] **OK**.

E. Verify Software Version

After updating, verify the software version using the following procedures. If your ECR does not update, reboot your PC and repeat the procedure from step A. Verify that you are using a crossover cable to connect the ECR to the PC; do not use a LAN cable.

Application, Kernel & Ramdisk Versions

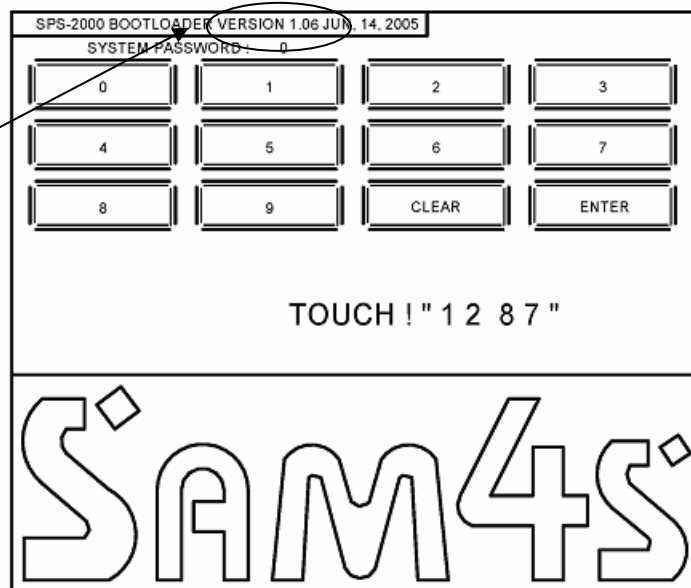
1. Touch the **S** Mode tab. Enter the password if required.
2. Touch **SELF TEST**.
3. Touch **VERSION**. The Version Screen displays:



Boot Version

1. Turn the Power Switch to the **ON** position while holding down the power button on the front panel below the screen. The Boot Version displays:

Current Boot
Version is 1.06



2. Touch **1 2 8 7**.
3. Touch **System Menu**.
4. Touch **Test Etc**. The Test screen displays. The Micom Version is displayed on the last line of the screen.

