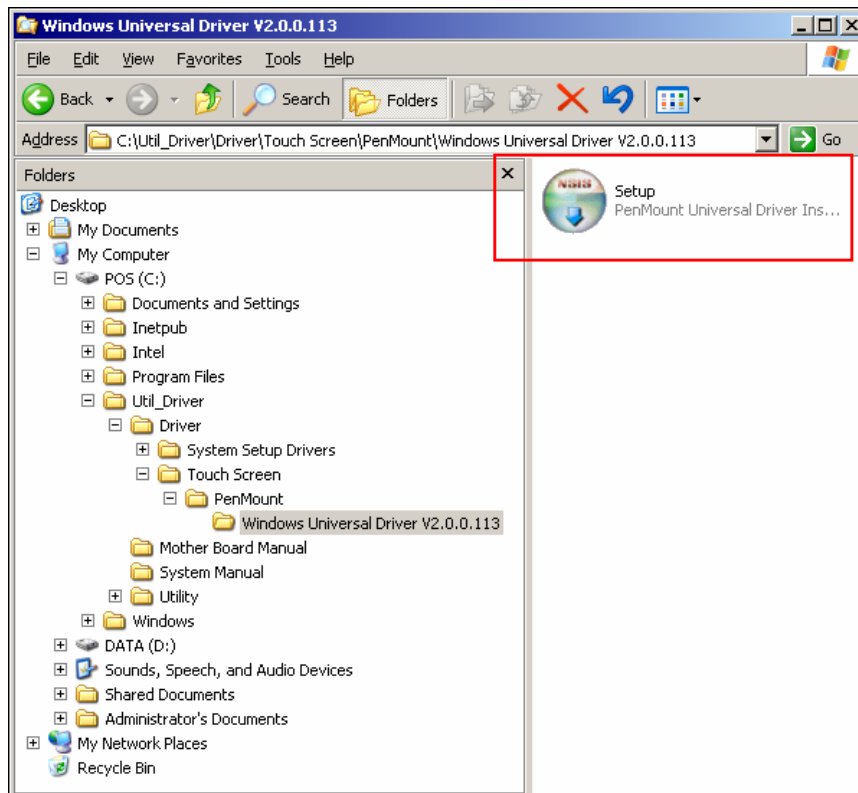


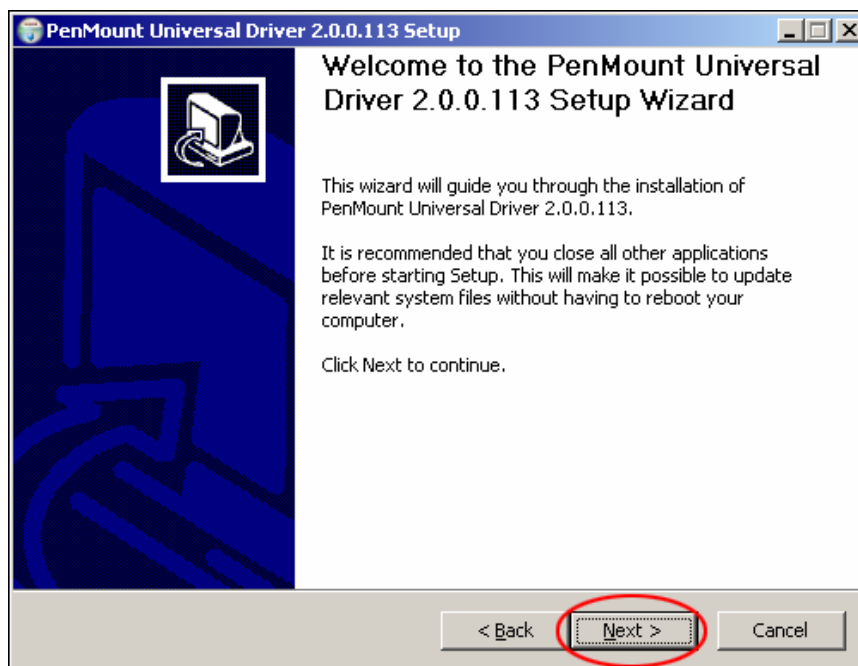
## \* Installation of Touch Driver

1) Run Setup.exe

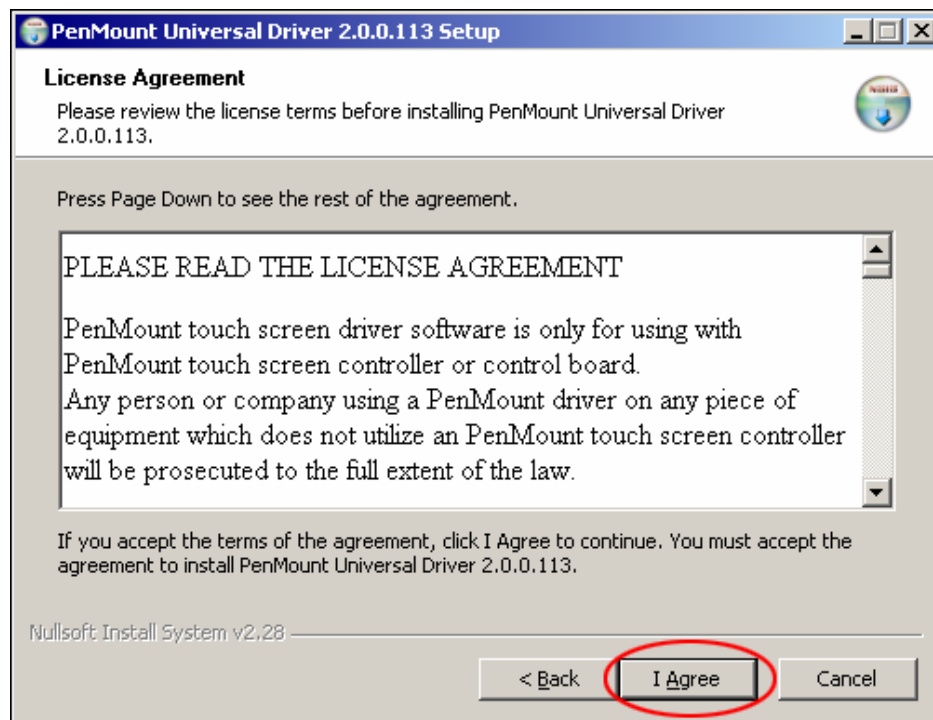
C:\Util\_Driver\Driver\Touch Screen\PenMount\Windows Universal Driver V2.0.0.133\



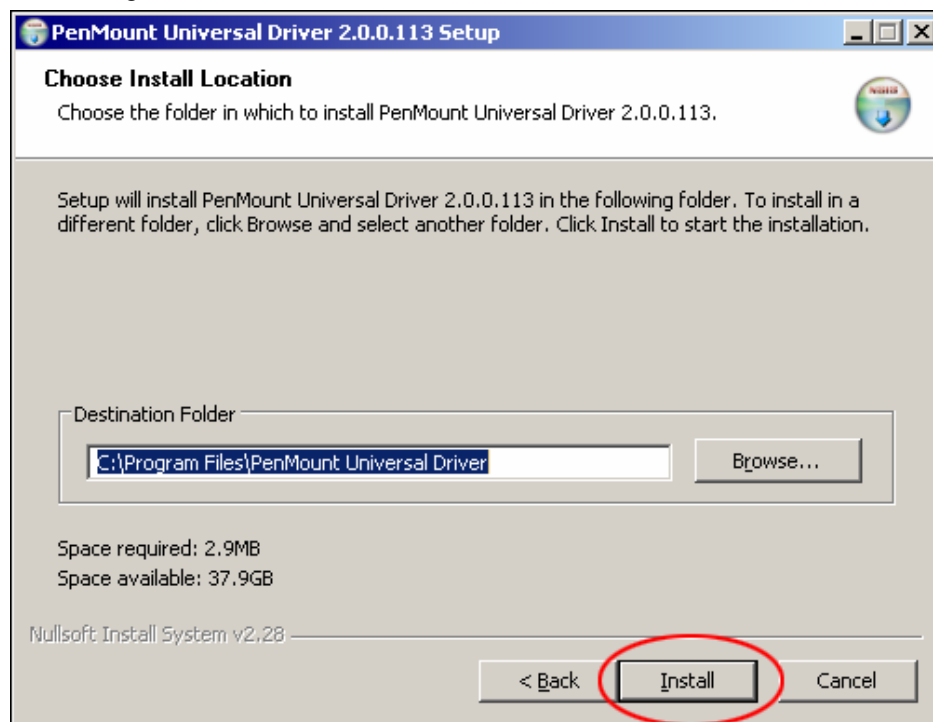
2) After install wizard starting, click 'Next'.



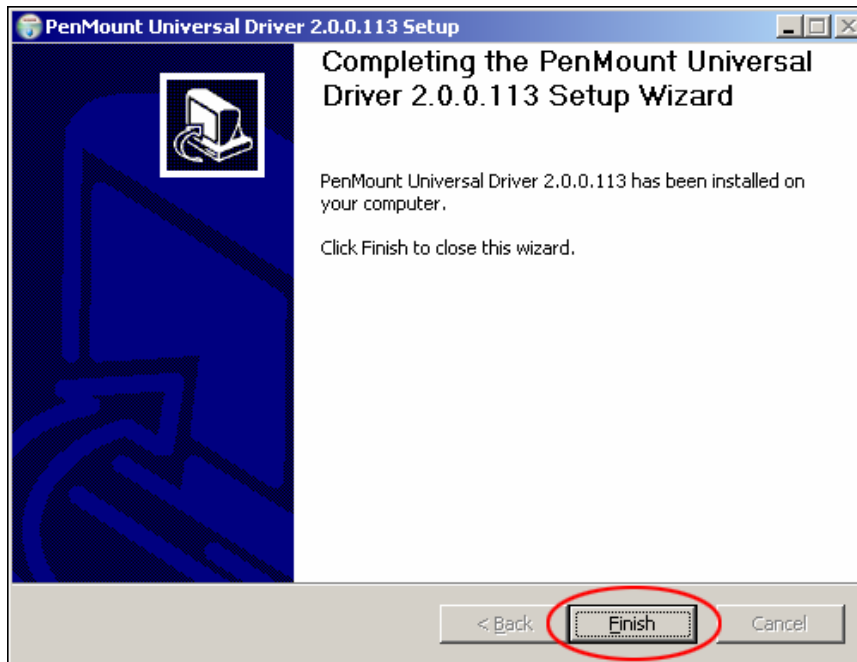
3) Agree with license. Click 'I Agree'



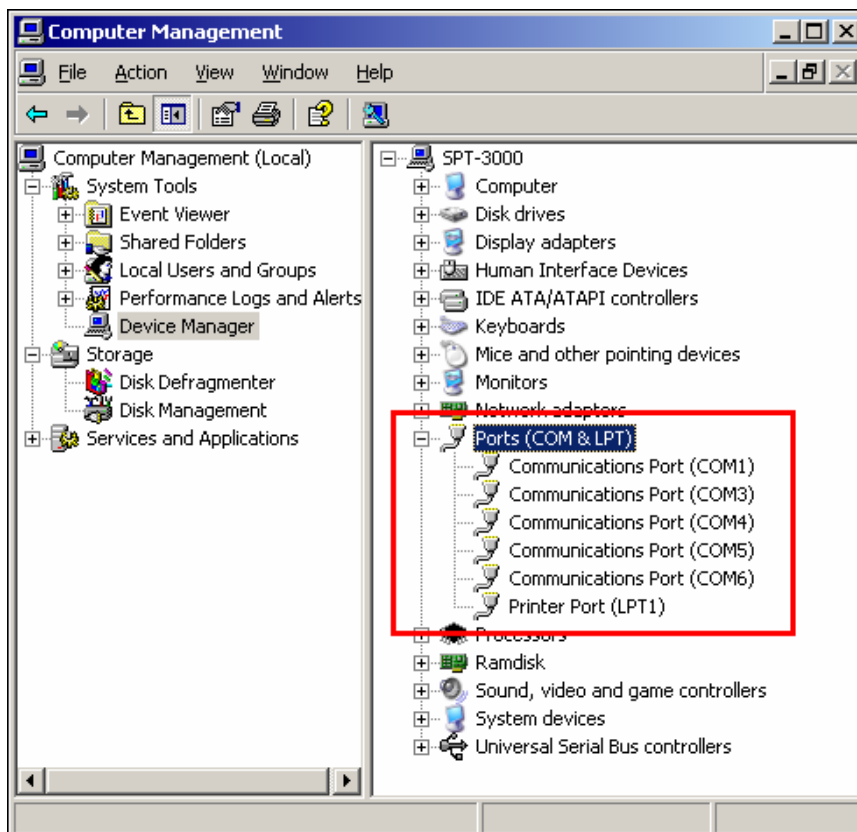
4) You can select 'Destination Folder' on a 'Choose Install Location' dialog. If you don't want to change, click 'Install'.



5) After completing setup wizard, click 'Finish'.



6) You can recognize the ports like below picture after installation is successfully completed.



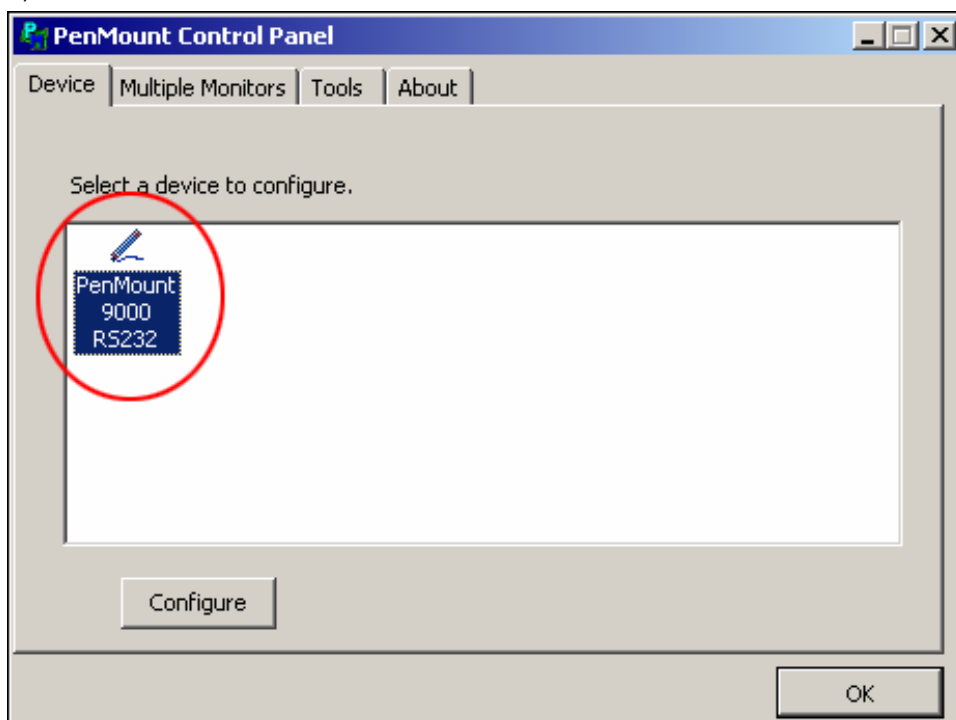
7) Click a tray icon below.



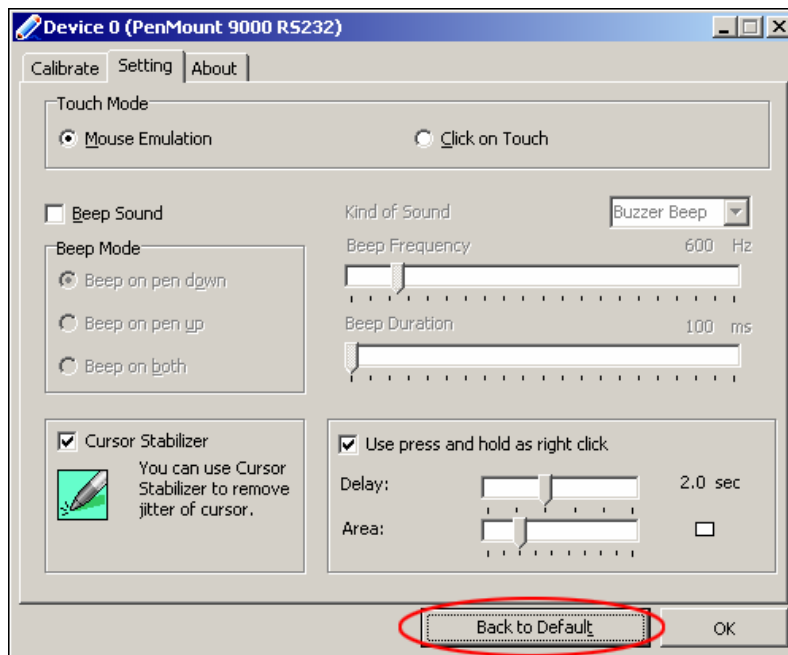
7) Select 'Control Panel'.



8) Double-click a 'PenMount 9000 RS 232' icon on 'PenMount Control Panel'.



9) Click 'Back to Default' on 'Setting' tab.



10) After check 'Beep Sound' box, verify 'Beep Frequency' is 600 Hz. If it isn't '600 Hz', adjust to '600 Hz' and click 'OK'.

