

# **Touch Driver Install Manual**

## **SPT-7500**

(Version 1.0)

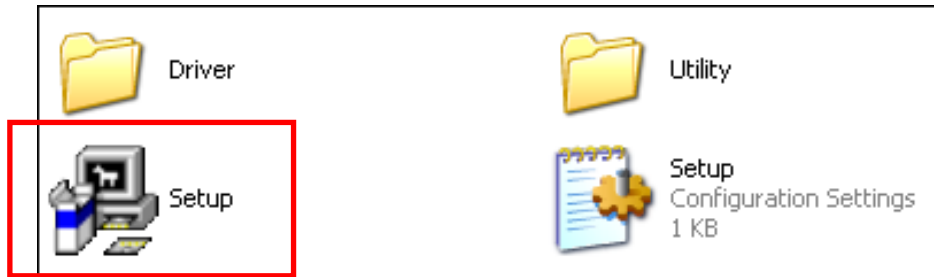
[www.sam4s.com](http://www.sam4s.com)

Revision A (Aug 23, 2012)

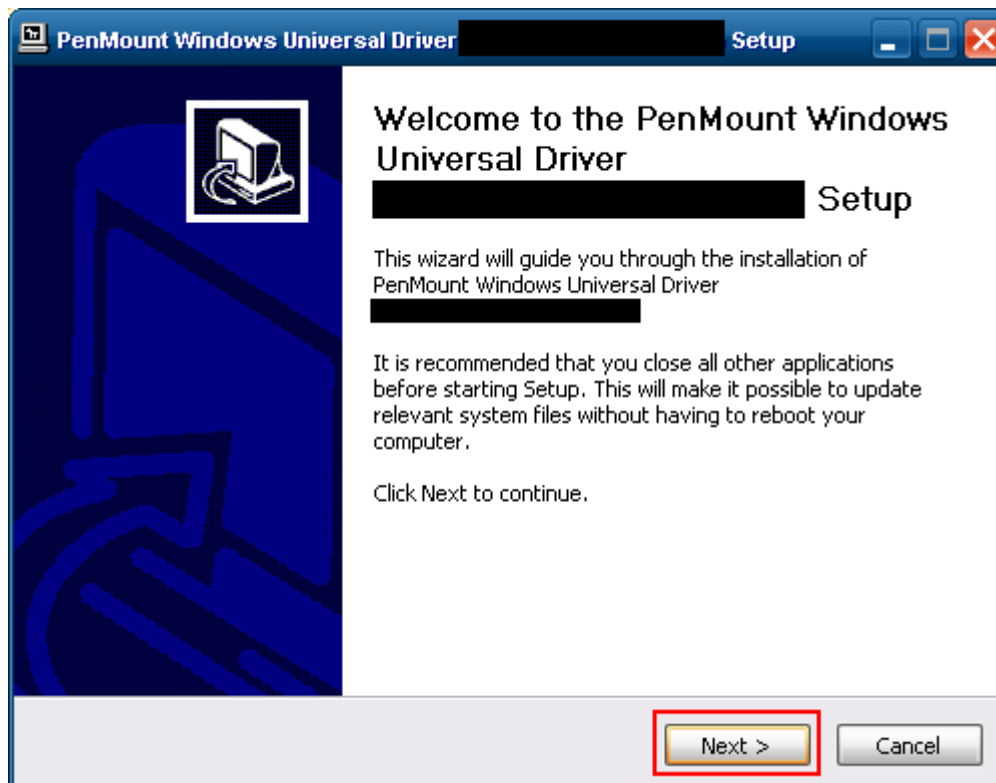
---

## \* Installation of Touch Driver

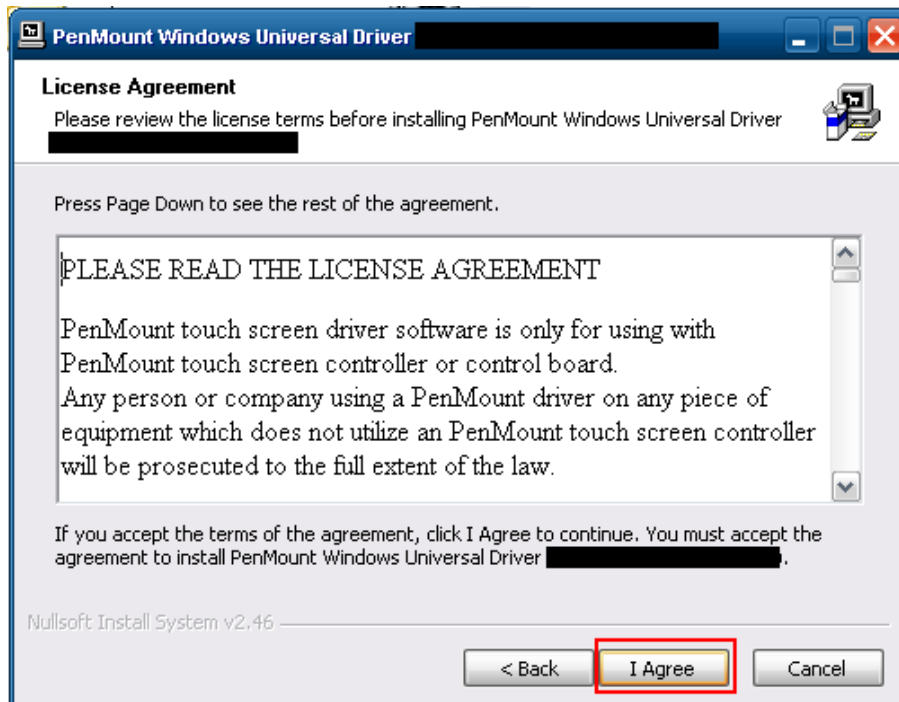
- 1) Run '**Setup.exe**' file.



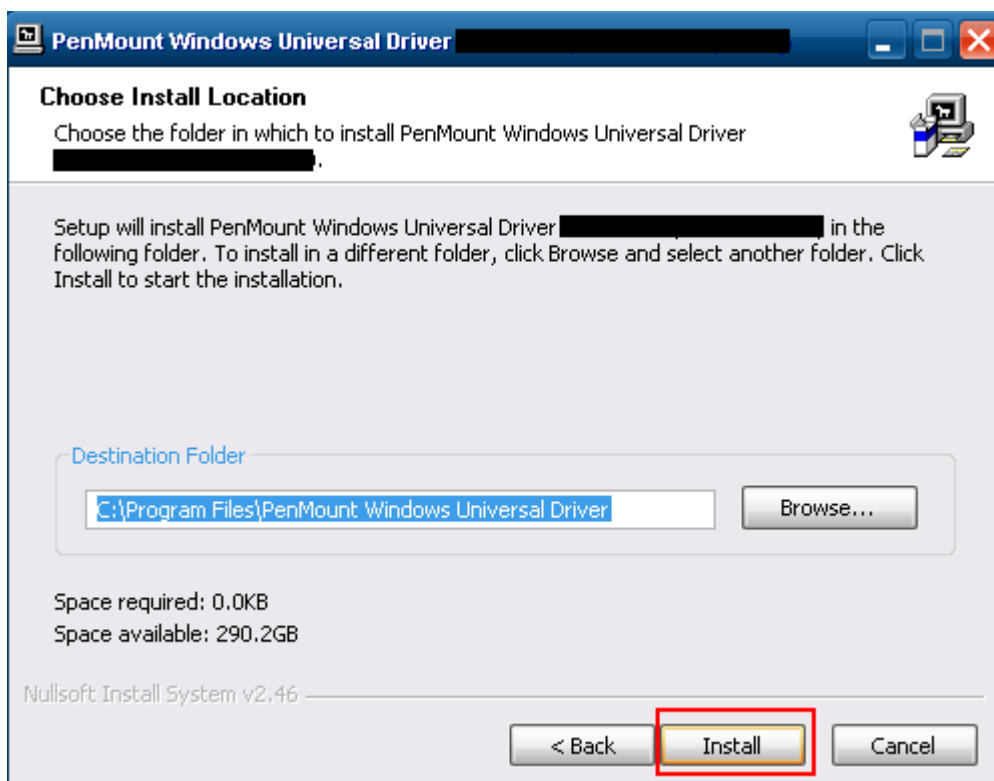
- 2) After install wizard starting, click '**Next**' button.



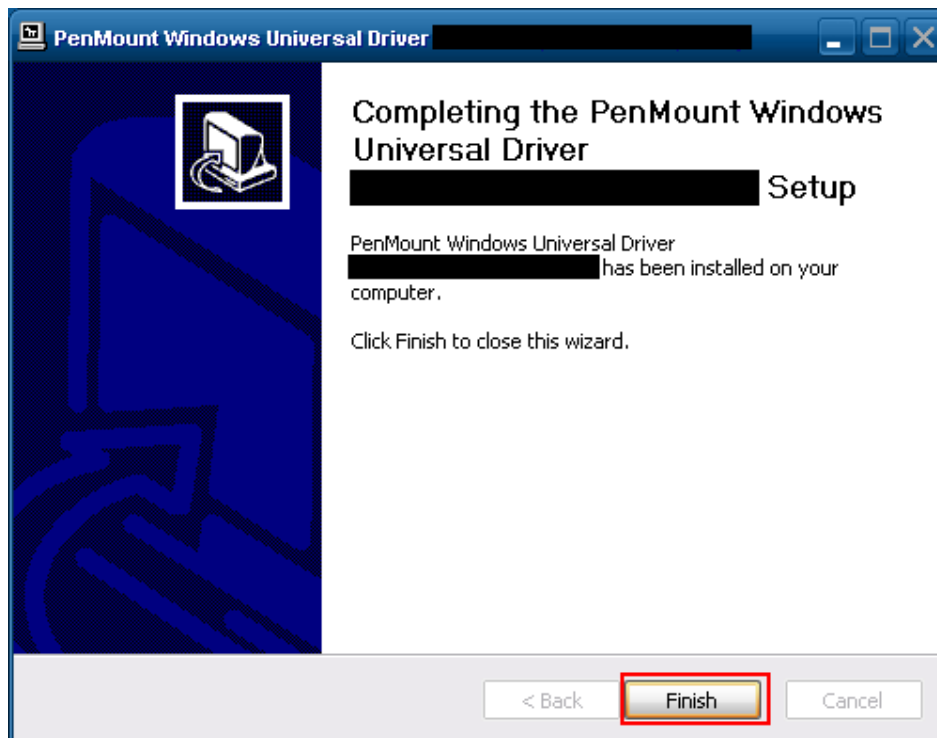
- 3) Agree with license. Click '**I Agree**' button.



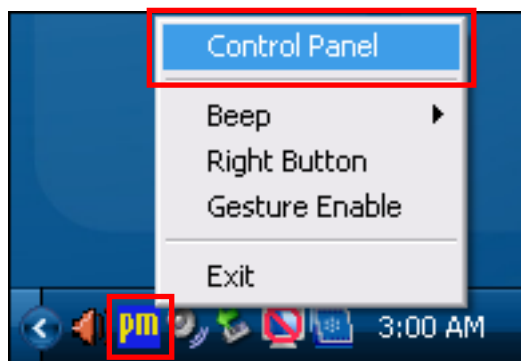
- 4) You can select 'Destination Folder' on a 'Choose Install Location' dialog. If you don't want to change, click '**Install**' button.



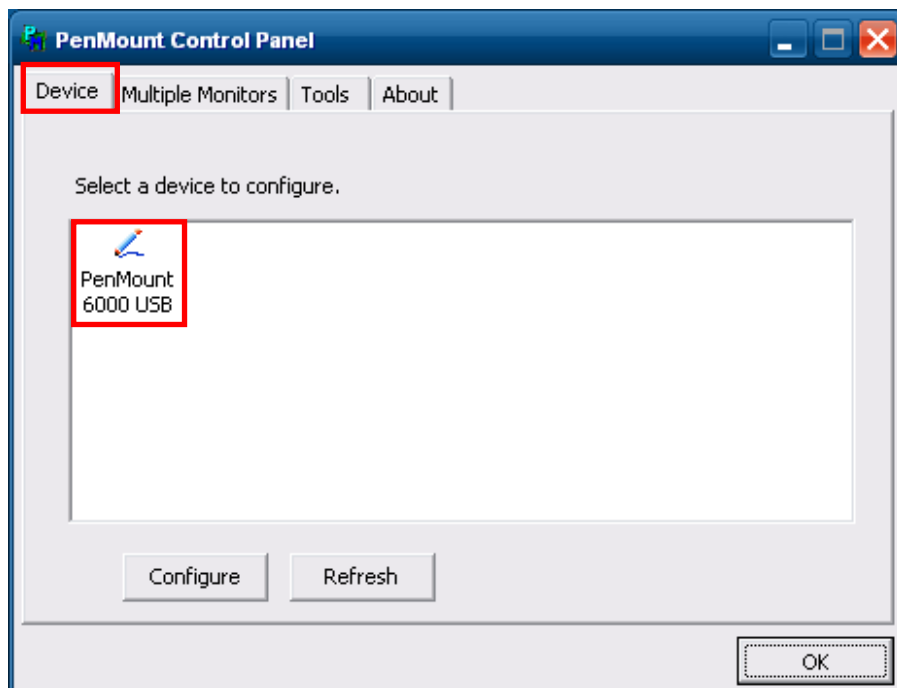
- 5) Click '**Finish**' button.



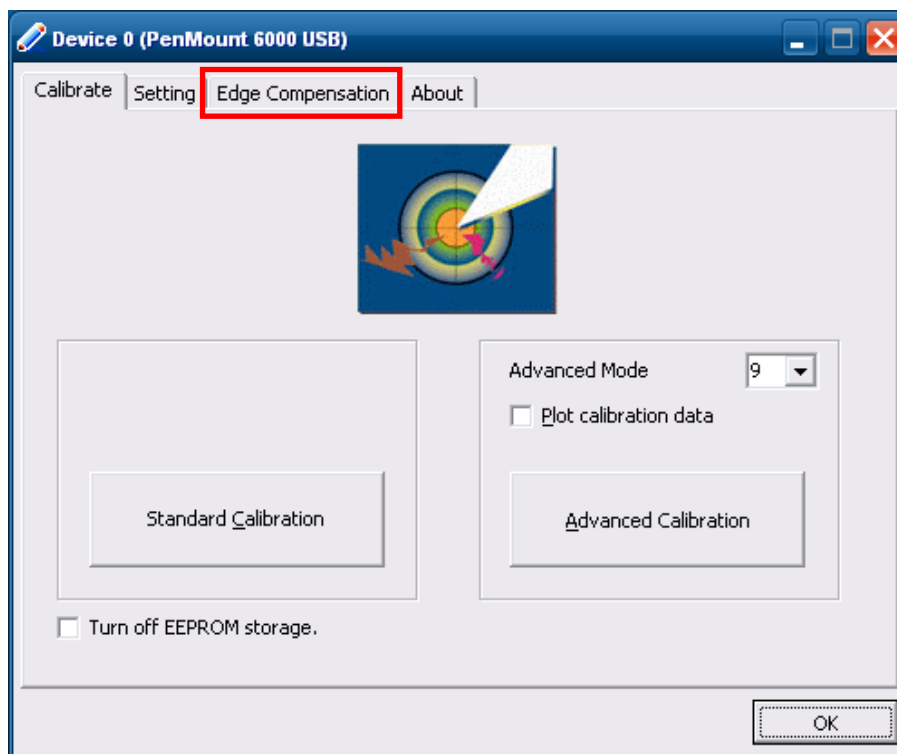
- 6) Click the right button of mouse on '**PM**' icon of Windows tray icons. And select '**Control Panel**' on popup menu.



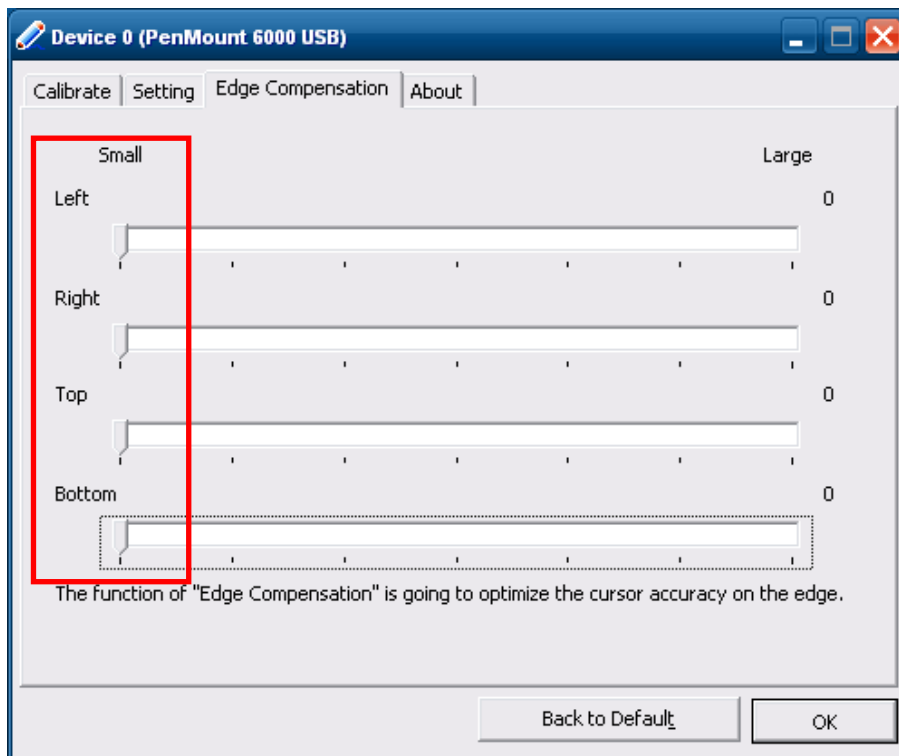
- 7) Double-click '**PenMount 6000 USB**' on '**Device**' tab.



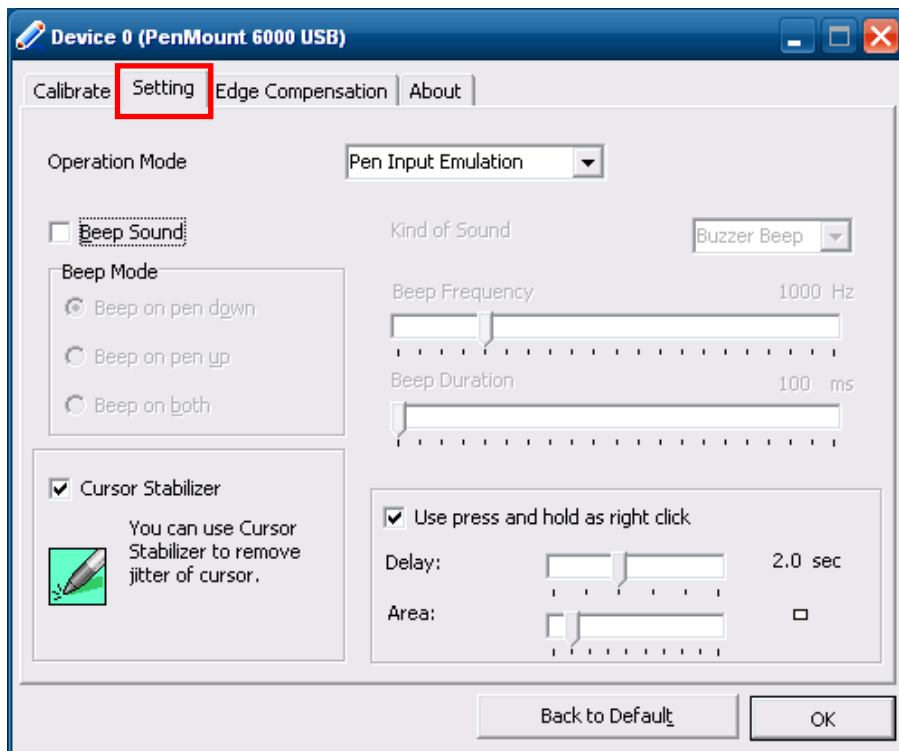
- 8) Click '**Edge Compensation**' tab.



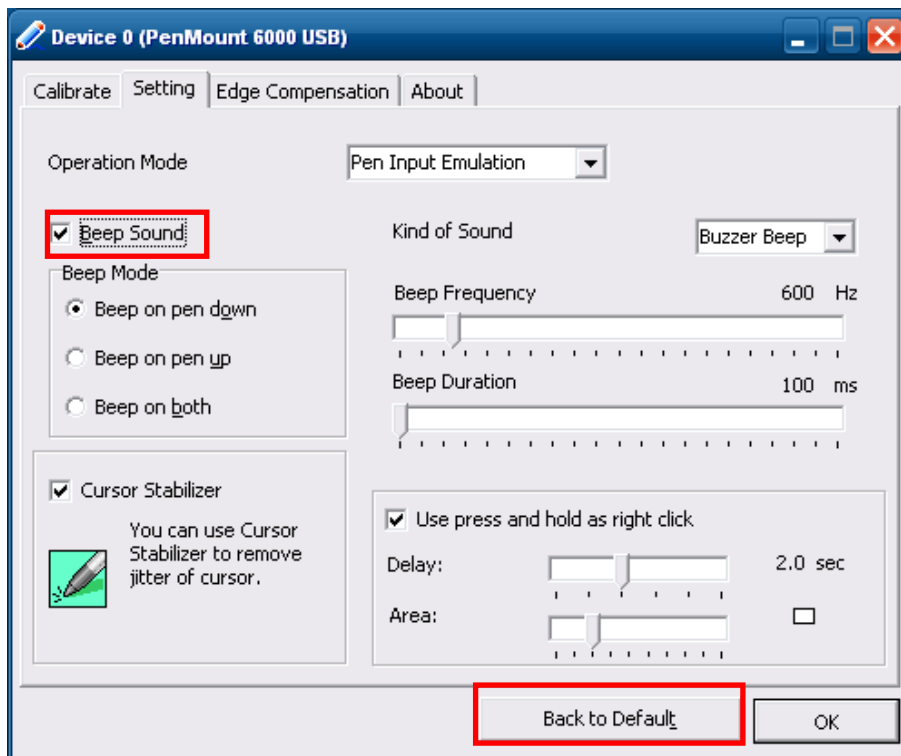
- 9) Move the four scroll bars to the left.



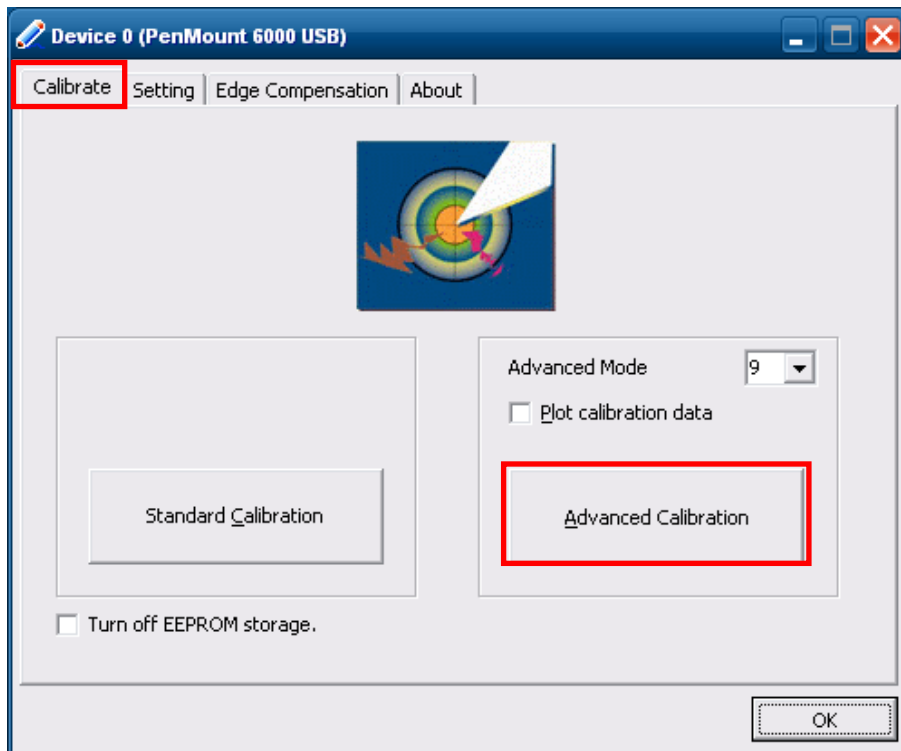
- 10) Click '**Setting**' tab.



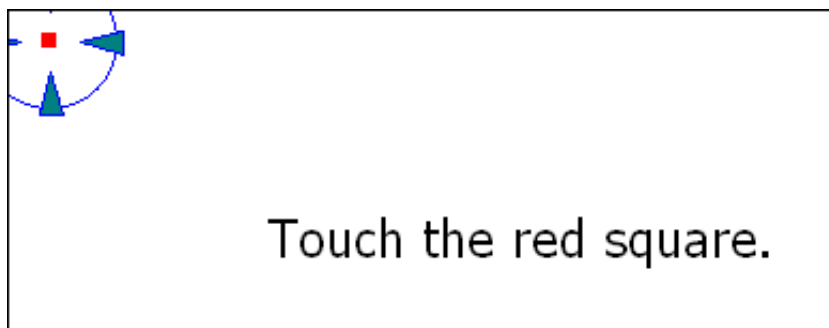
- 11) Click '**Back to Default**' button and check '**Beep Sound**' button.



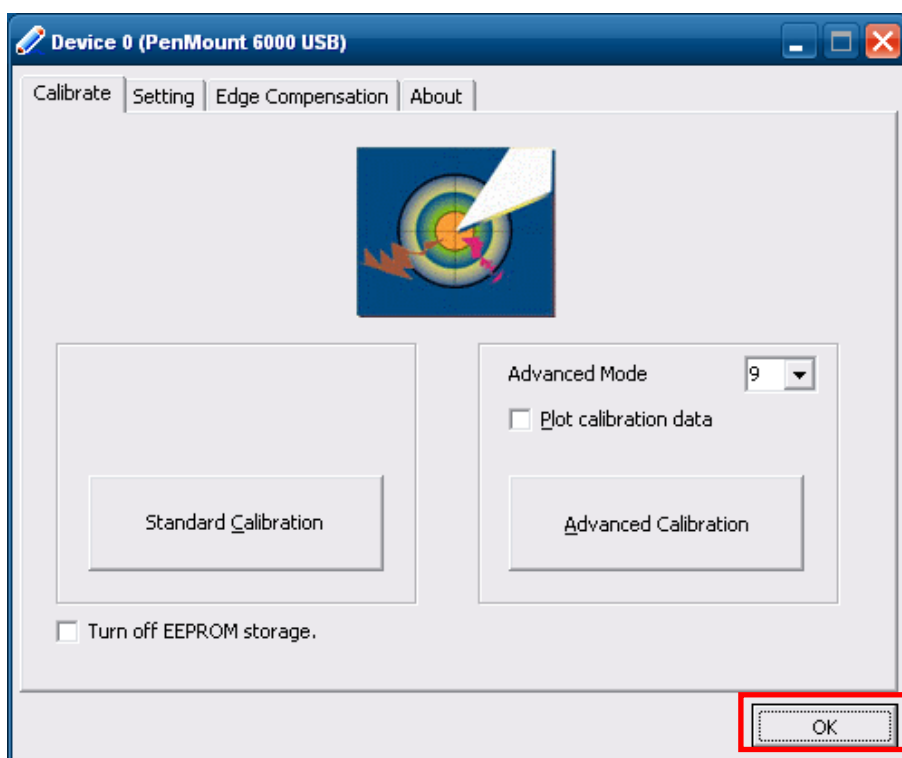
- 12) On '**Calibrate**' tab and click the '**Advanced Calibration**' button..



- 13) Click the red point about 2 seconds on a calibration screen. Calibration procedure will be proceeded with following messages.



- 14) Click 'OK' button.





15) Click '**OK**' button.

