



**SPT-7000 Series**  
**Dealer Test Program User Manual**  
**(Version 1.00)**

[www.sam4s.com](http://www.sam4s.com)

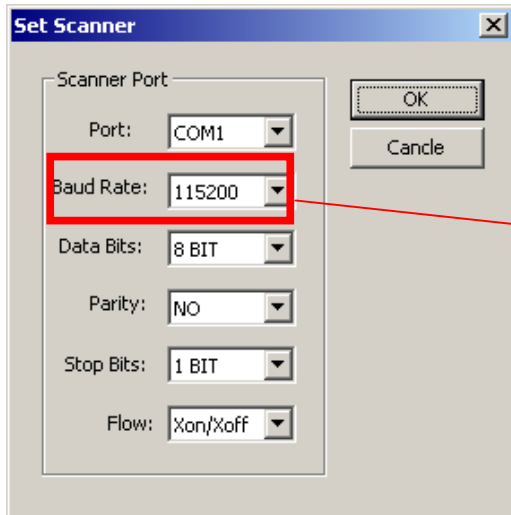
Revision A (Mar 28, 2011)

## Contents

DEALER TEST PROGRAM (DTESTER.EXE V1.00).....	3
PORT CONNECTION.....	3
FUNCTION.....	5
■ ALL .....	5
■ SCANNER.....	7
■ VFD .....	8
■ COM.....	10
■ DRAWER.....	11
■ PRINTER.....	12

## DEALER TEST PROGRAM (DTESTER.EXE V1.00)

DTester.exe is made for testing peripherals of POS which they work properly through SPT-7000's ports. We can test Scanner, VFD, COM, Drawer, Printer devices with DTester.exe.



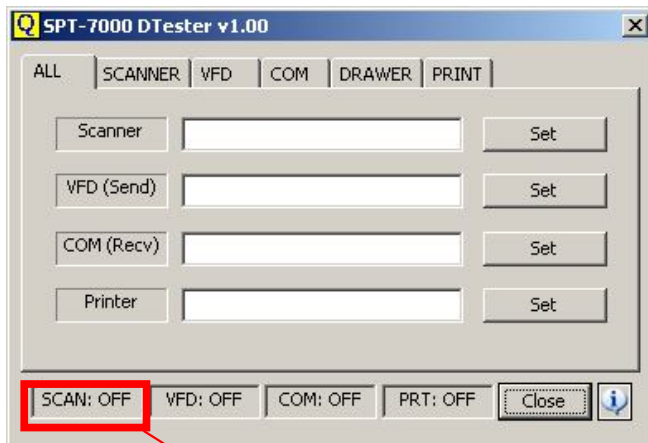
### PORT CONNECTION

This image is a setting dialog of scanner's port. (We can skip an additional explanation about other ports, because the others are similar with this.).

If you click a list box, it shows list of currently available system ports.



After settings, you should click <OK>  button and then selected port will be opened.



If port is opened successfully, the status bar will be switched from 'OFF' to 'ON'. If it can't be opened, it will still be 'OFF'.

※ NOTE

This table shows each of port setting values you can select; they can be different as systems.

Property	Values you can select
Port	COM1, COM2, COM3, COM4, COM5, LPT1, <b>USB (only for Printer)</b>
Baud rate	110, 300, 600, 1200, 2400, 4800, 9600, 14400, 19200, 38400, 57600, 115200, 128000, 256000
Data bits	5, 6, 7, 8
Parity	EVEN, ODD, NO, MARK, SPACE
Stop Bits	1, 2
Flow	Xon/Xoff, H/W, NO

## FUNCTION

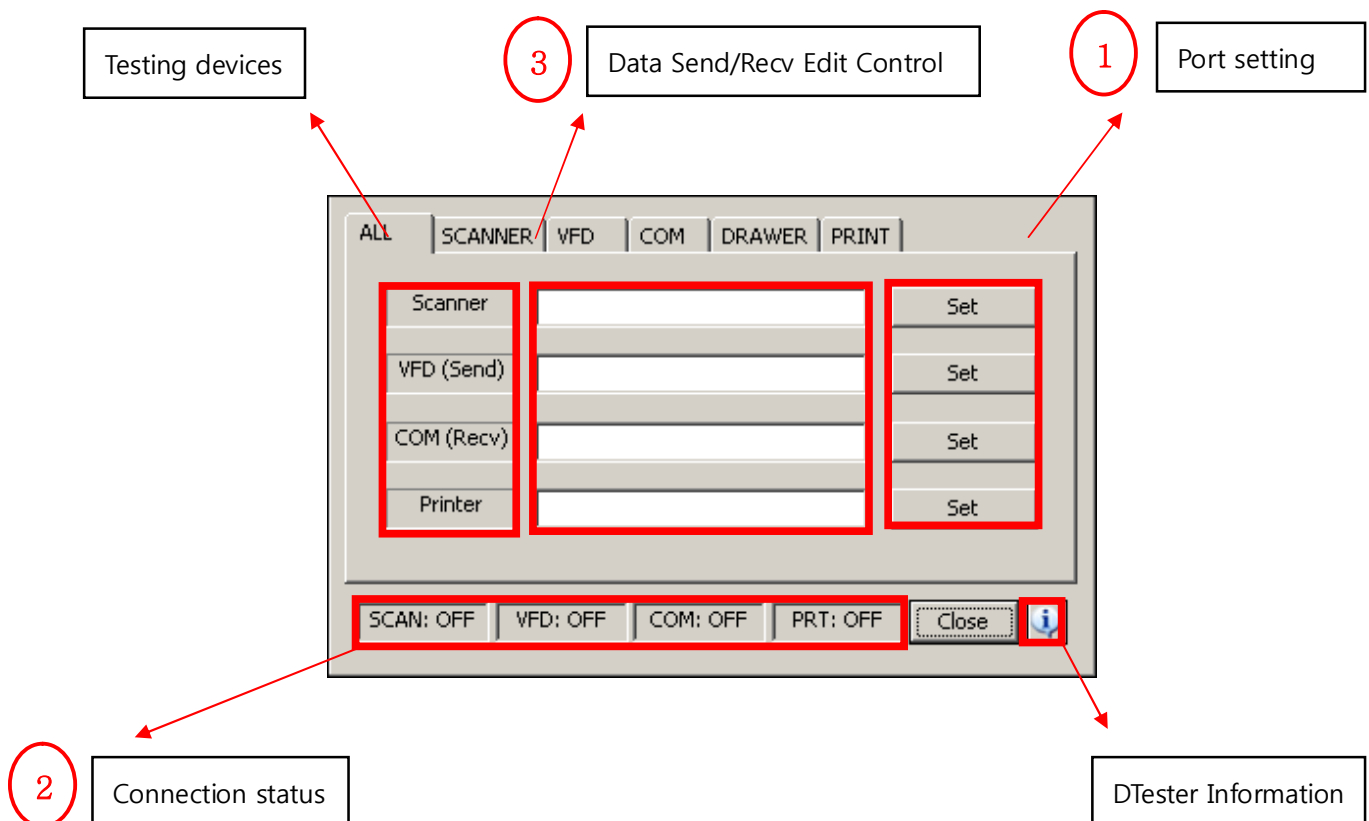
Dtester.exe has six tabs (ALL, SCANNER, VFD, COM, DRAWER, and PRINT).

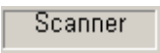
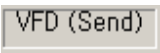
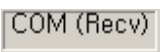

### ■ ALL

#### Usage

You can test scanner, VFD, COM, printer devices at the same time in this tab.

- ① Click <Set> button that you want to test, and set attributes on its setting dialog.
- ② If port is opened successfully, the status bar will be switched from 'OFF' to 'ON'. If it can't be opened, it will still be 'OFF'.
- ③ After settings, you can start to test devices.



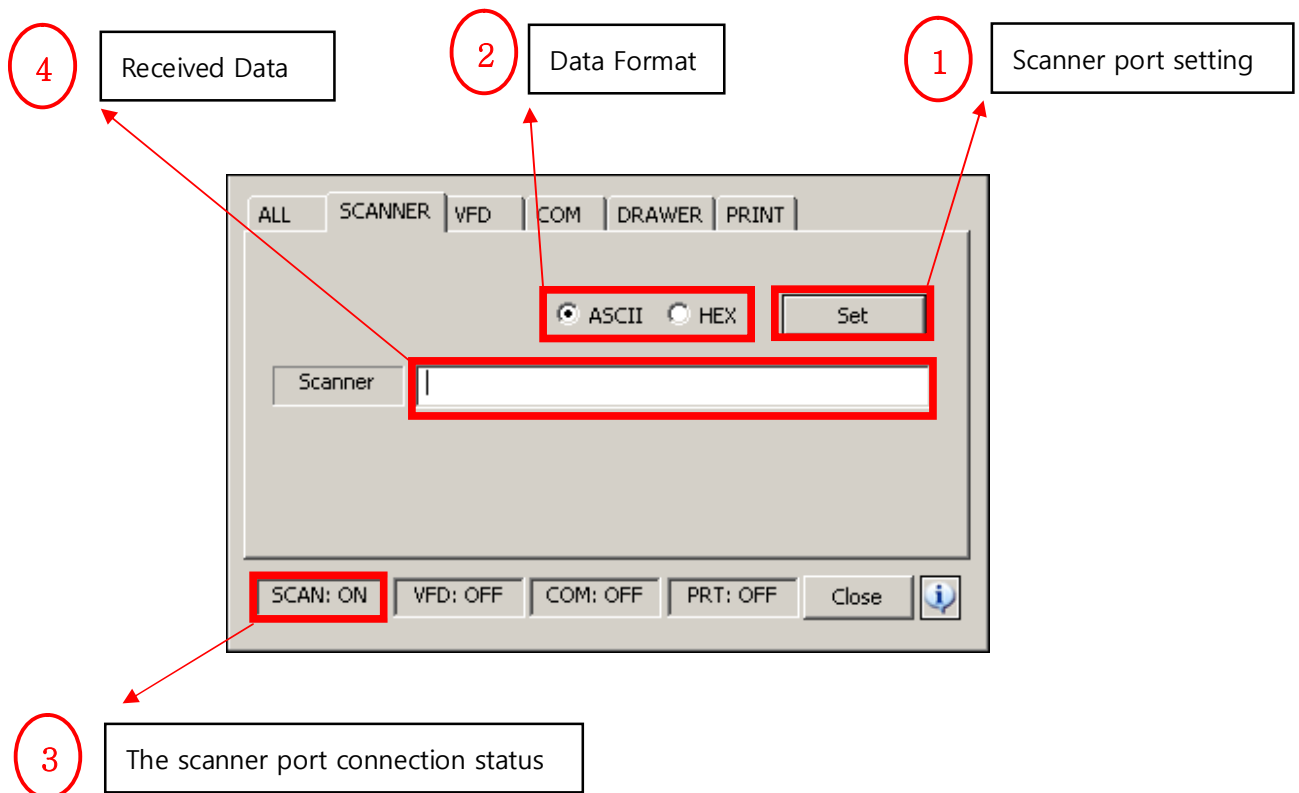
Device	Description
	You can test scanner by received data in the edit control.
	You can send data to VFD; VFD will show strings which are input characters from the edit control.
	You can display received data in the edit control through COM ports.
	You can send data to printer; Printer will print strings which are input characters from the edit control.

## ■ SCANNER

You can test scanner by received data in the edit control.

### Usage

- ① Click the <Set> button, and set attributes on its setting dialog.
- ② Select a data format that you want to receive.
- ③ If port is opened successfully, the status bar will be switched from 'SCAN: OFF' to 'SCAN: ON'. If it can not be opened, it will still be 'SCAN: OFF'.
- ④ If port is opened successfully, 'DTester.exe' will display received data by scanner. You can check received data in the edit control.



## ■ VFD

You can test VFD by sending data in the edit control. Default values of SPT-7000's VFD port are shown below in the table.

Default Setting	
Port	COM6
Baud Rate	9600 bps
Data Bit	8
Parity Bit	1
Stop Bit	1

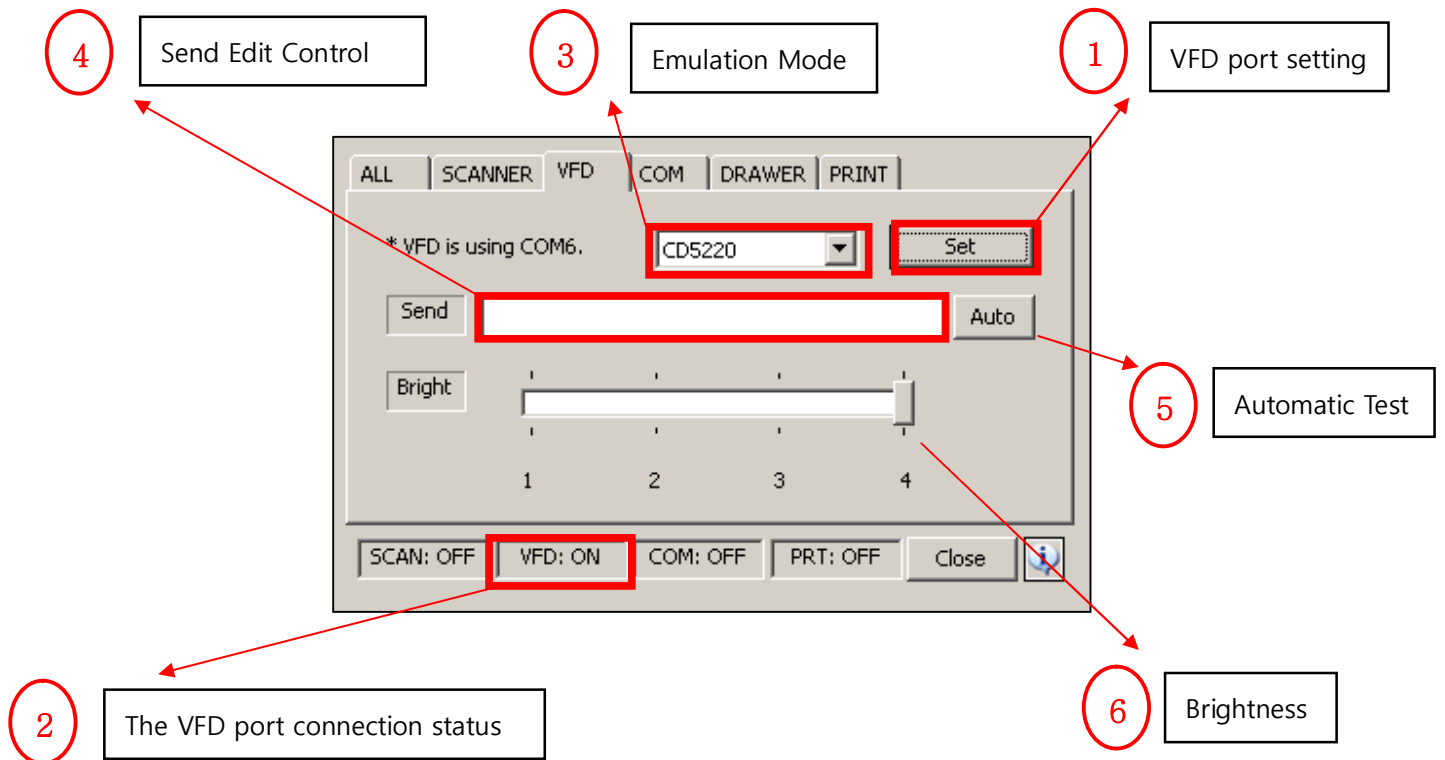
### Usage

- ① Click the <Set> button, and set attributes on its setting dialog.
- ② If port is opened successfully, the status bar will be switched from 'VFD: OFF' to 'VFD: ON'. If it can not be opened, it will still be 'VFD: OFF'.
- ③ You can select one of VFD emulation modes in the combo-box.
- ④ **Manual Test:** You can input characters in the 'Send' edit control. VFD will show them whenever they are input.

※ **Caution:** No. ⑤ and ⑥ are only working on 'CD5220 Emulation Mode'.

- ⑤ **Automatic Test:** If you click the <Auto> button, VFD will scroll current date and time as a stream, automatically. If you want to stop this, click the <Stop> button.
- ⑥ 'Bright' slide can control VFD's brightness. There are four Brightness levels; 20%, 40%, 60%, 100%.



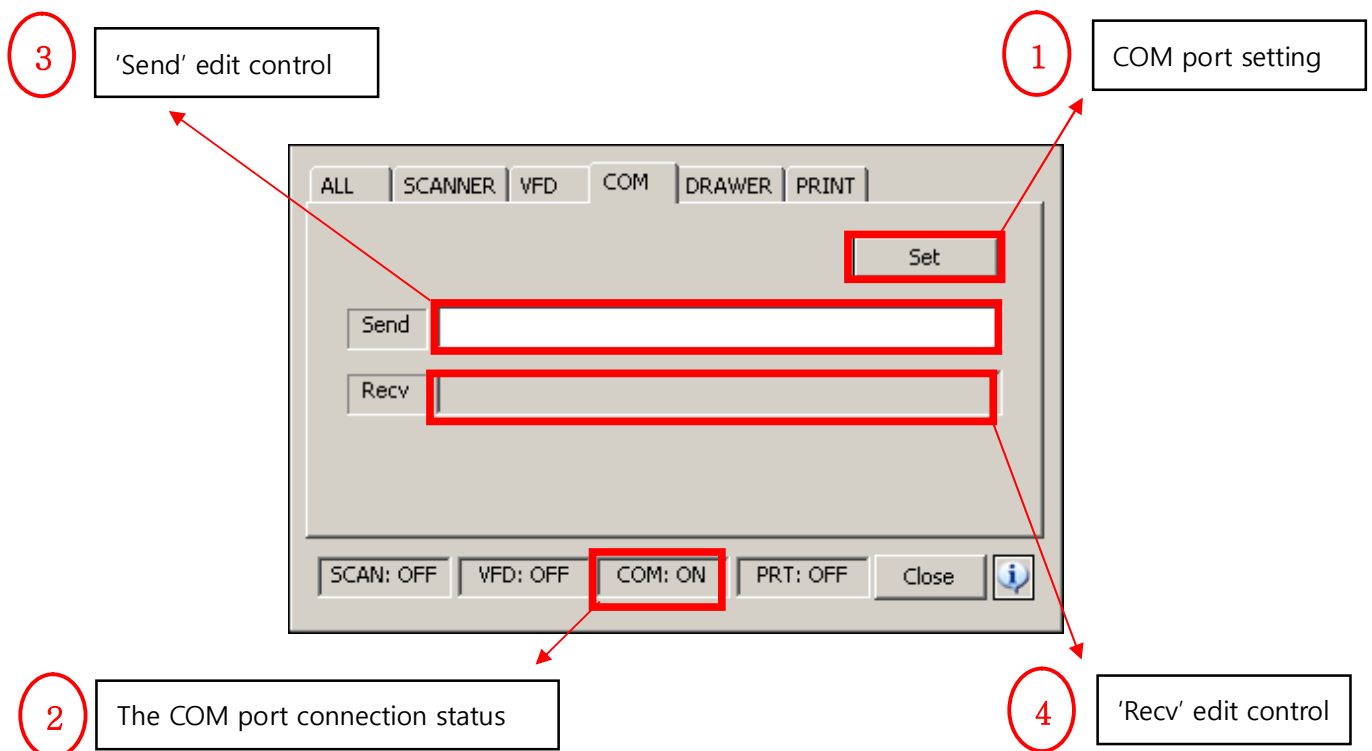


## ■ COM

You can test COM ports by received or send data.

### Usage

- ① Click the <Set> button, and set attributes on its setting dialog.
- ② If port is opened successfully, the status bar will be switched from 'COM: OFF' to 'COM: ON'. If it can not be opened, it will still be 'COM: OFF'.
- ③ You can input characters in the 'Send' edit control. They will be sent to device which is connected with.
- ④ If COM port receives data, 'Recv' edit control will display it.

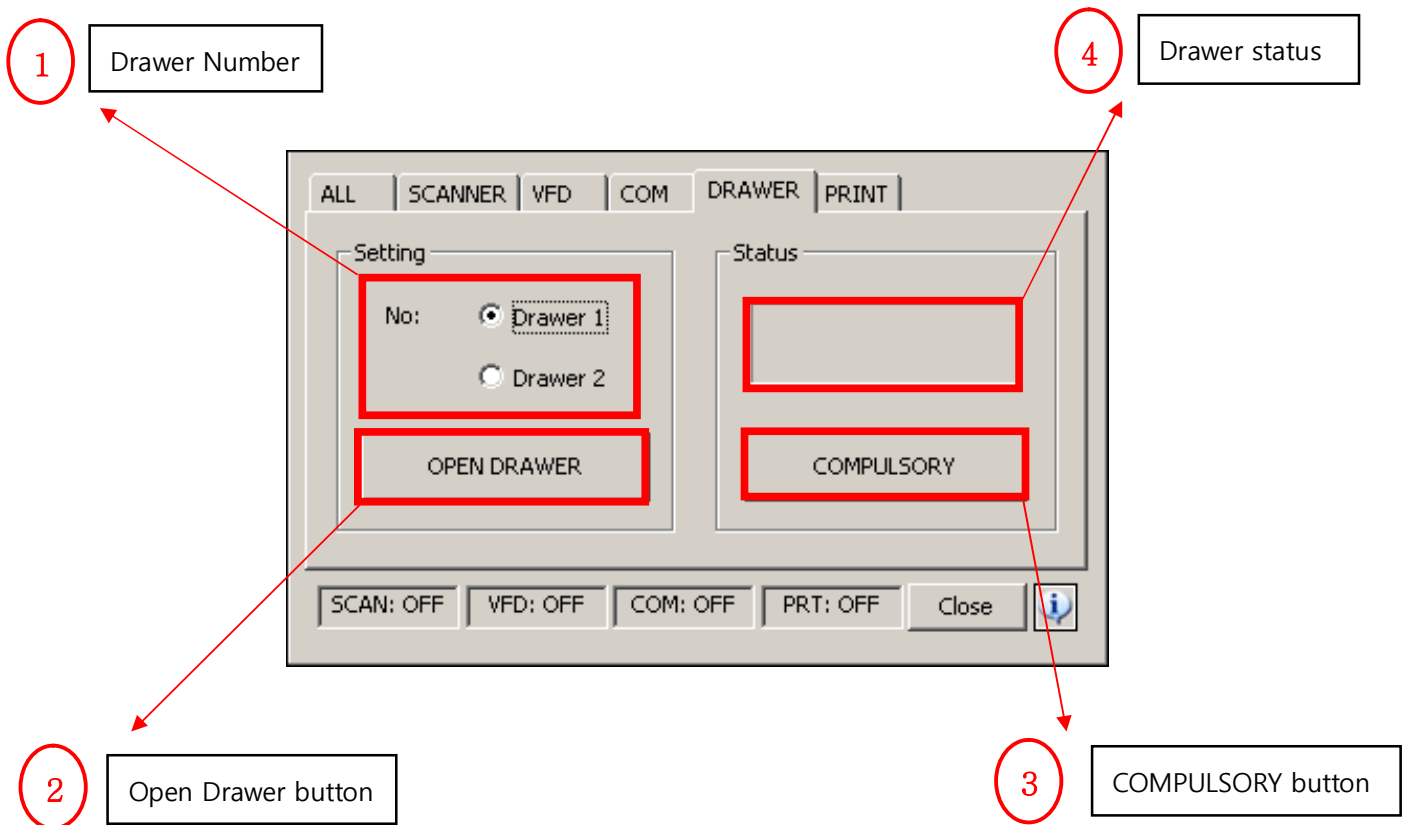


## ■ DRAWER

You can test the drawer port.

### Usage

- ① Set the number of drawer in 'Setting' section.
- ② After drawer setting is finished, click the <OPEN DRAWER> button. The drawer will be opened.
- ③ In 'Satus' section, click the <COMPULSORY> button and you can check the drawer's current status.



## ■ PRINTER

You can test the printer; Data is sending to printer directly.

### Usage

- ① Click the <Set> button, and set attributes on its setting dialog.  
(※ You have to locate a DLL file(ELLIX\_USB\_DLL.dll) in the same path with DTester.exe or in "C:\Windows\system32\" folder, when you test the ELLIX40 printer with USB type interface.)
- ② If port is opened successfully, the status bar will be switched from 'PRT: OFF' to 'PRT: ON'. If it can not be opened, it will still be 'PRT: OFF'.
- ③ Click <Printer Test> button.
- ④ Check that the printer can print.  
(Data string: "SAM4S Printer Test for PC POS series.")

