

System Driver Install Manual

SPT-7000

(Version 1.1)

www.sam4s.com

Revision A (Nov 13, 2012)

Contents

1. Windows XP	3
(1) Installation of Chipset Device Software.....	3
(2) Installation of Graphic Driver.....	6
(3) Installation of LAN Driver	10
(4) Installation of Sound Driver.....	12
(5) Installation of AHCI Driver	14
2. Windows 7	20
(1) Installation of Chipset Device Software.....	20
(2) Installation of Graphic Driver.....	24
(3) Installation of LAN Driver	28
(4) Installation of Sound Driver.....	31

1. Windows XP

(1) Installation of Chipset Device Software

- ① Run '**infinst.exe**' file.



- ② Click '**Next**' button when the setup program started.



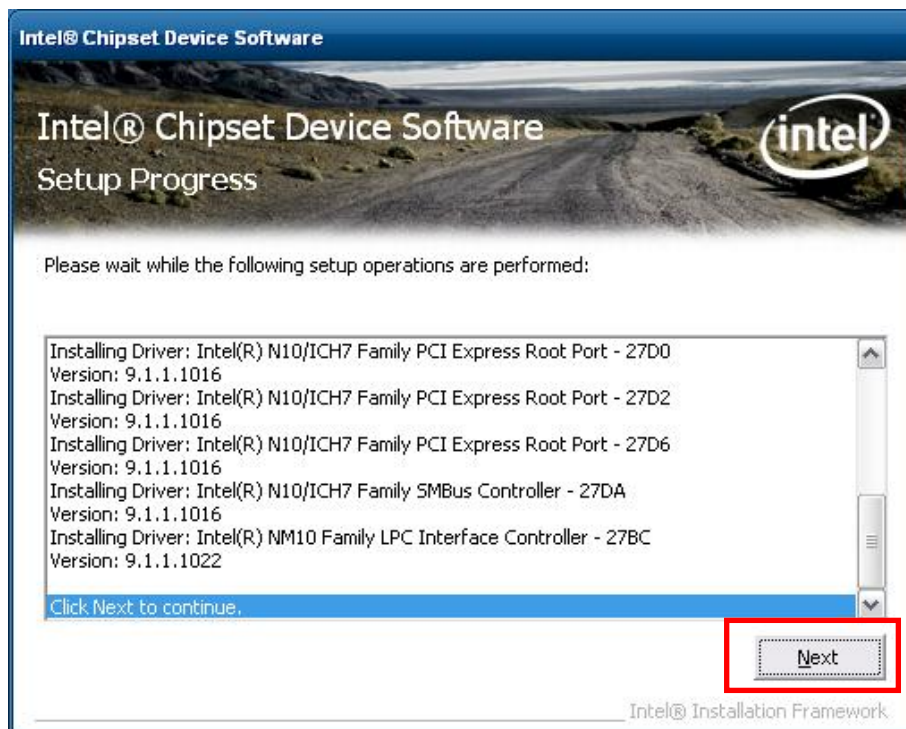
- ③ Click 'Yes' button to accept the terms of the license agreement.



- ④ Click 'Next' button when readme file appeared.



- ⑤ If the setup operation is finished, click '**Next**' button.

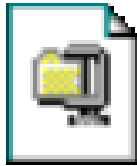


- ⑥ Restart your computer to click '**Finish**' button.



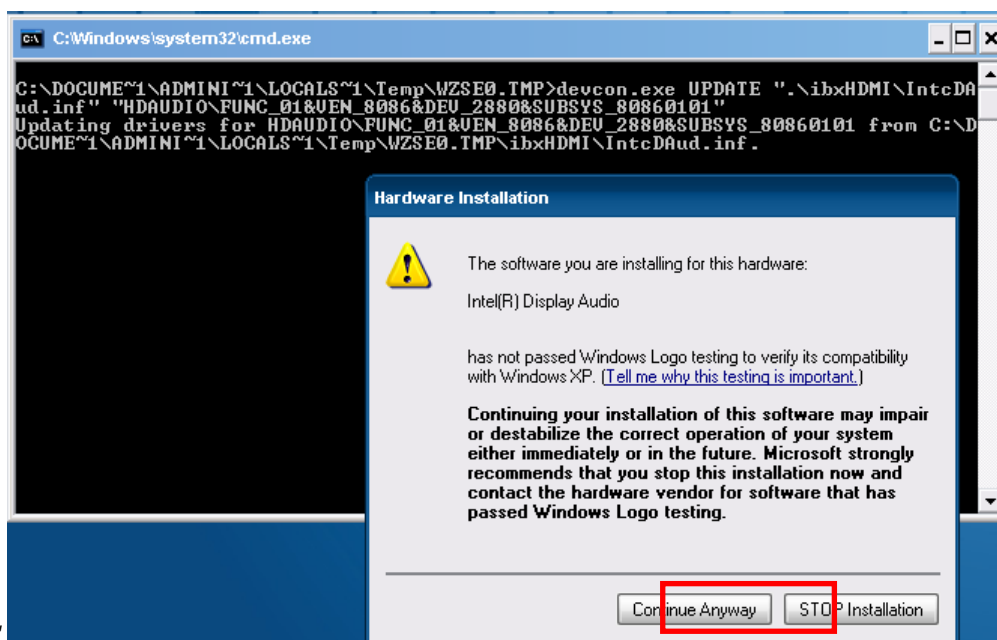
(2) Installation of Graphic Driver

- ① Run 'L-24_CRT' file...

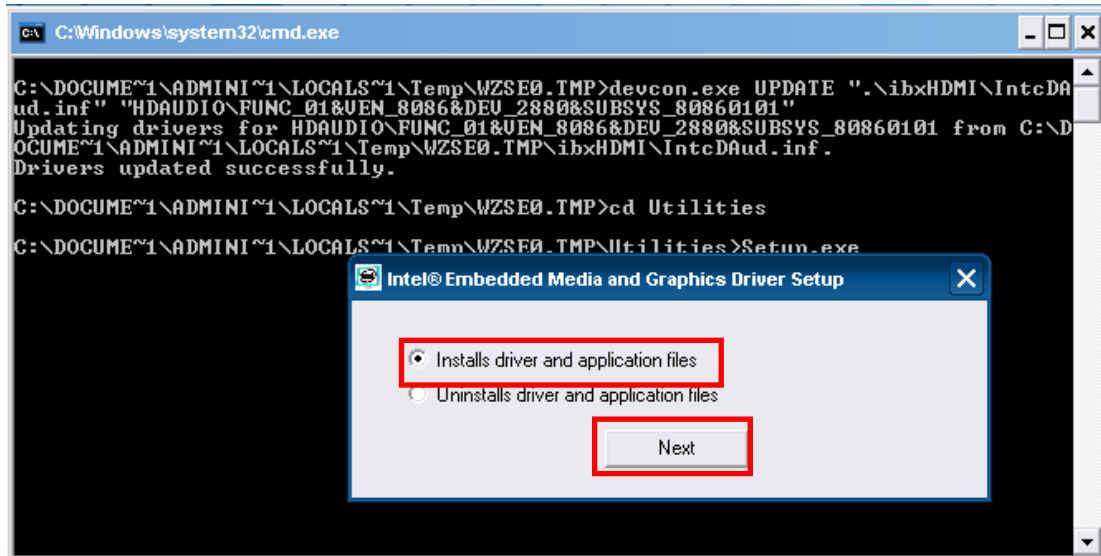


L-24_CRT

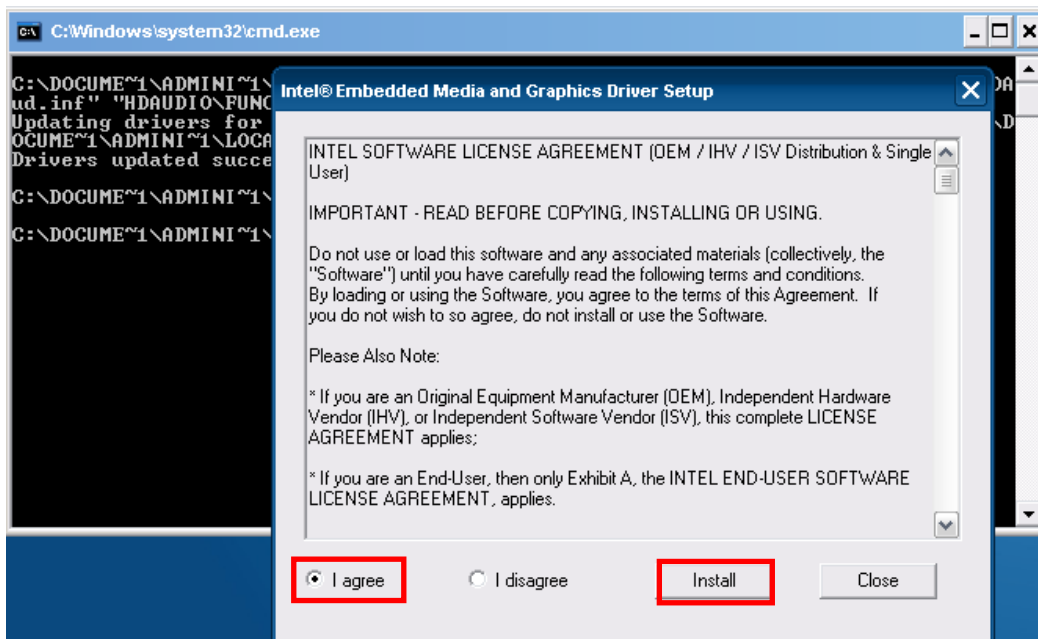
- ② Click 'Continue Anyway' button



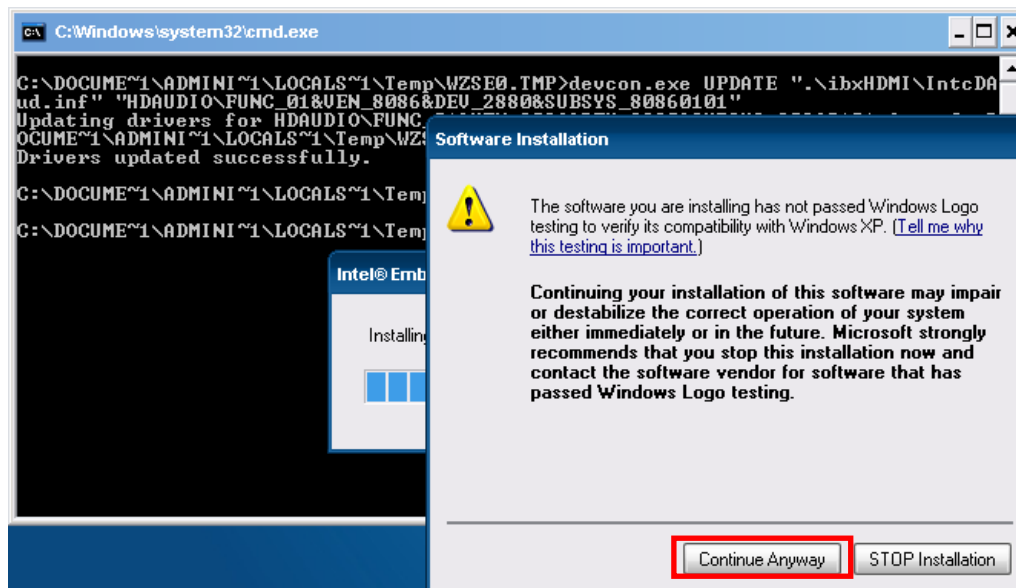
- ③ Click '**Next**' button when setup program started.



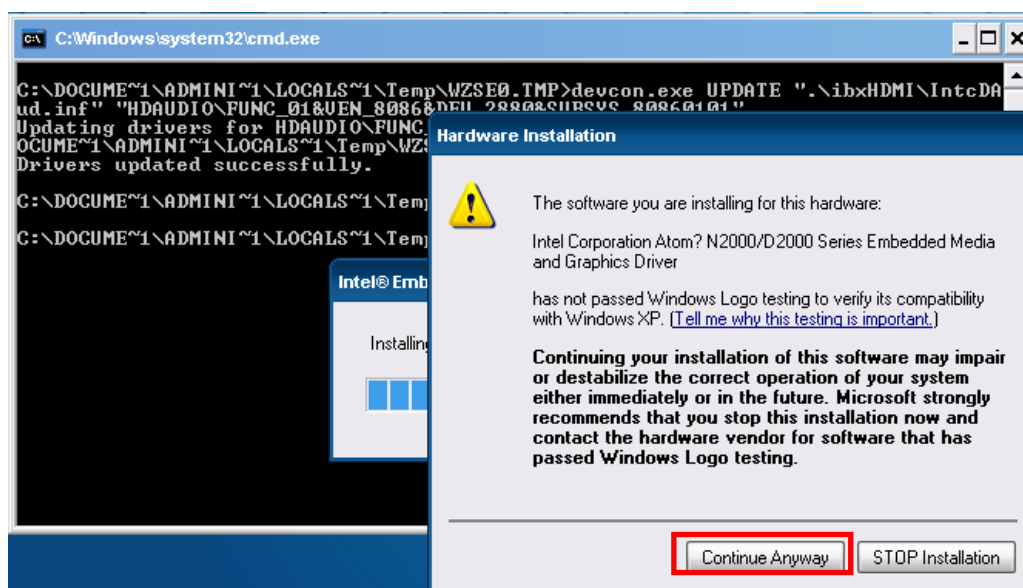
- ④ Click '**Install**' button to accept the term of license agreement.



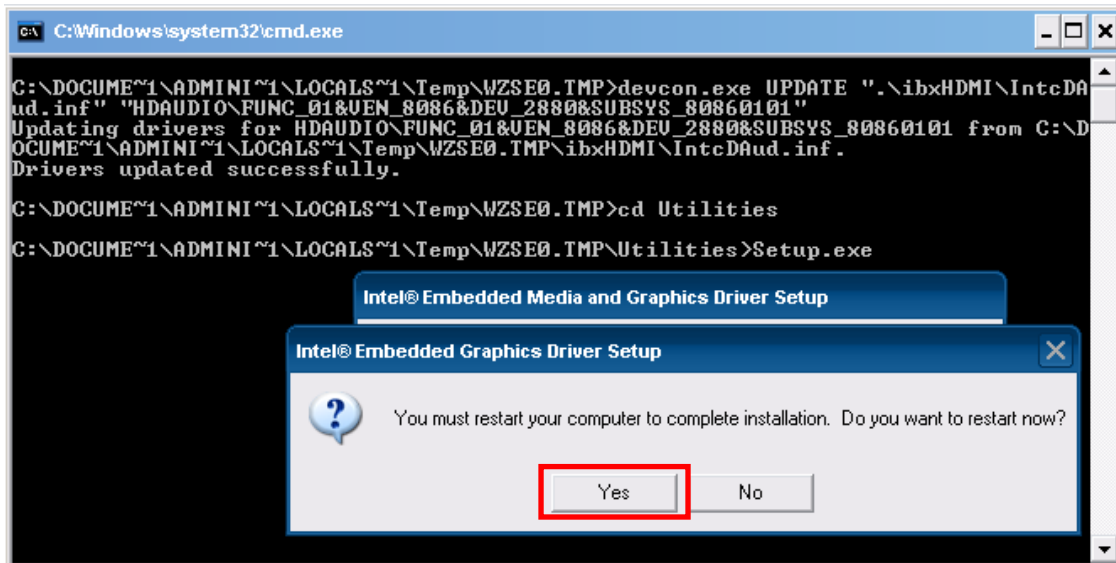
- ⑤ Click '**Continue Anyway**' button.



- ⑥ Click '**Continue Anyway**' button.

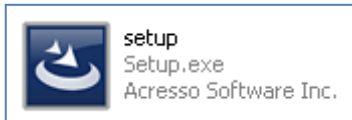


- ⑦ Restart your computer to click 'Yes' button

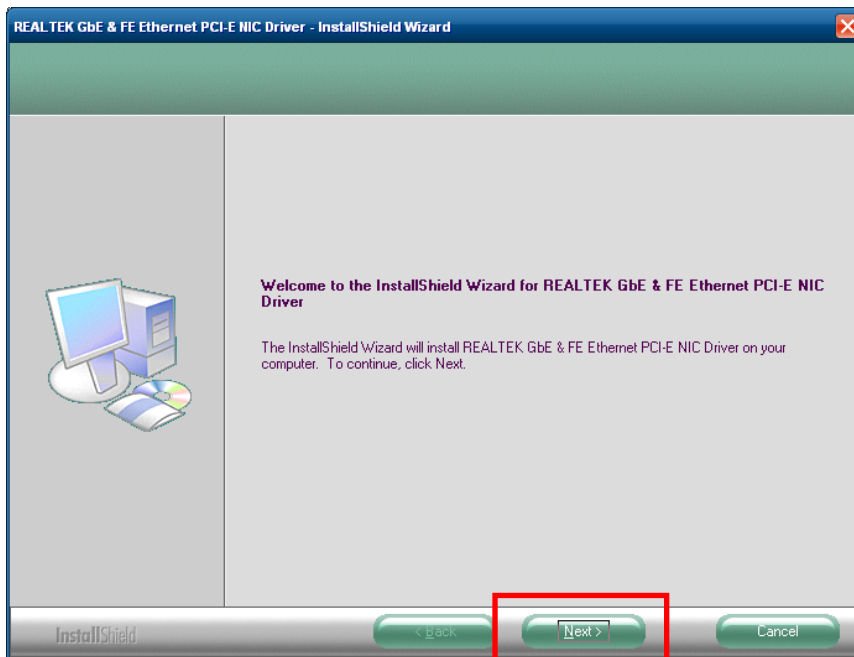


(3) Installation of LAN Driver

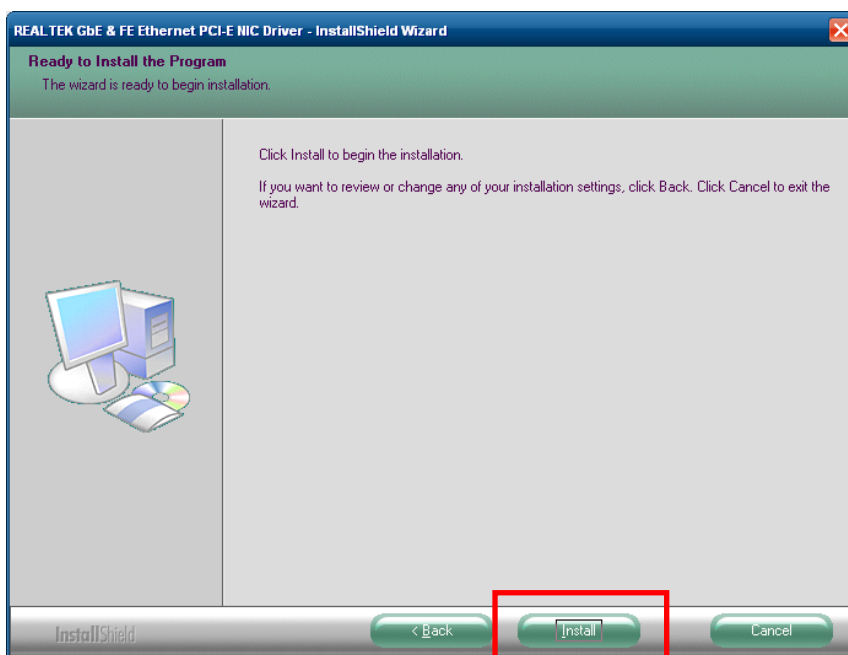
- ① Run '**setup.exe**' file.



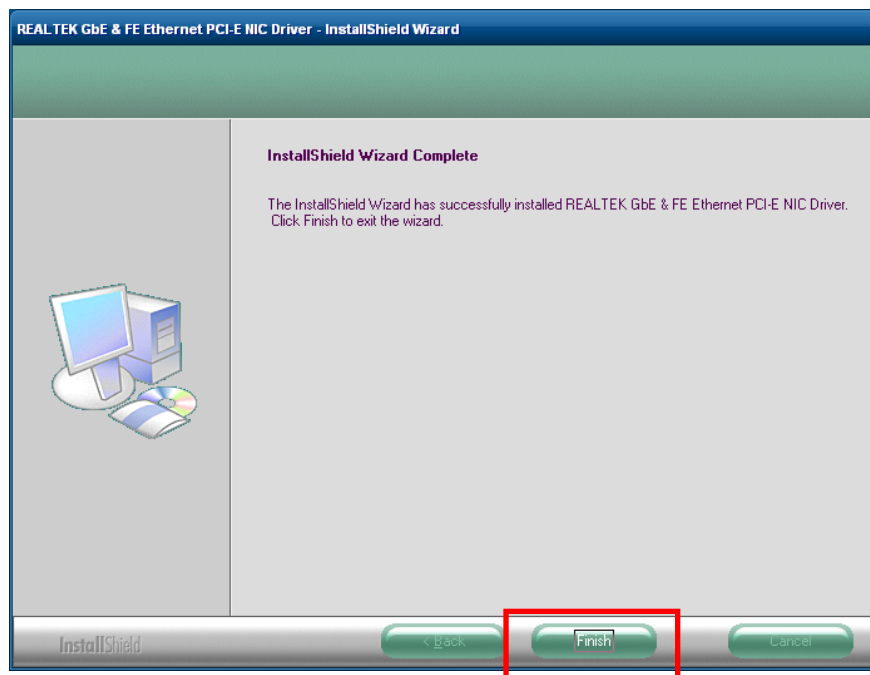
- ② Click '**Next**' button when the InstallShield Wizard started.



- ③ Click '**Install**' button to continue.

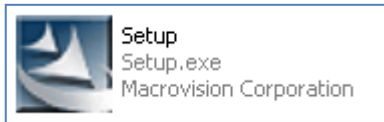


- ④ Click '**Finish**' button.

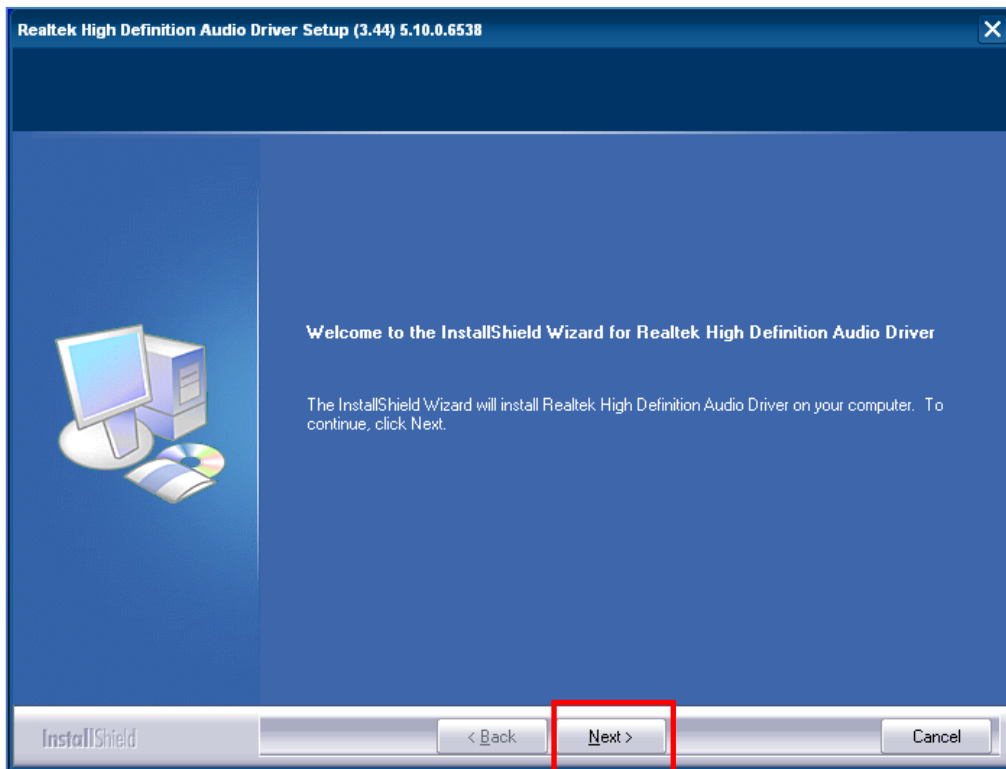


(4) Installation of Sound Driver

- ① Run '**Setup.exe**' file.



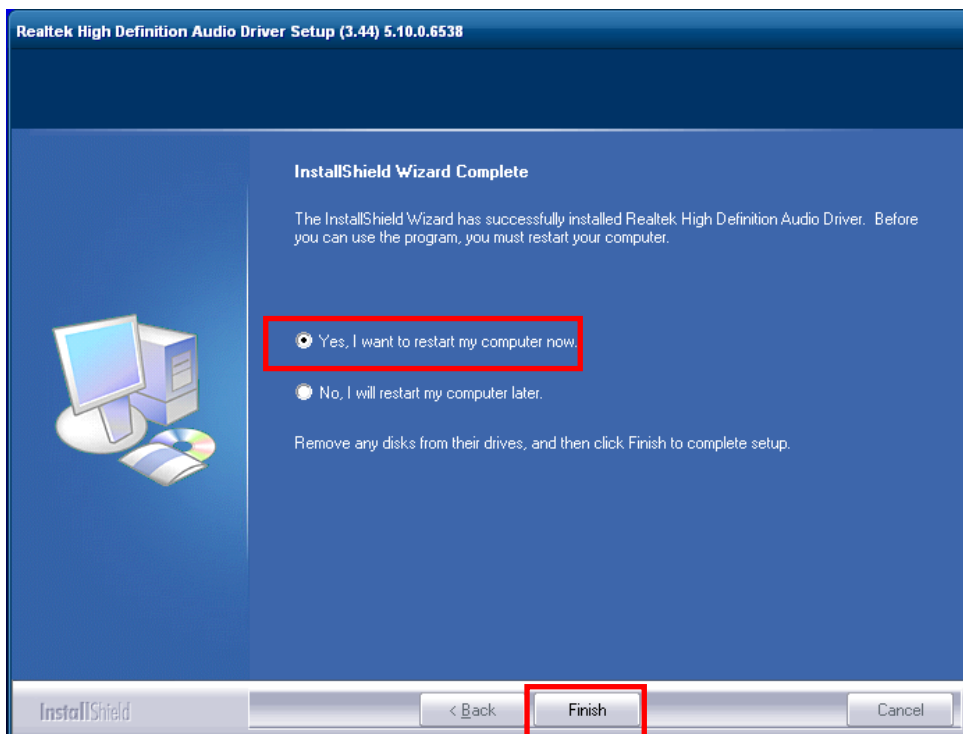
- ② Click '**Next**' button when the installshield wizard started.



- ③ Click '**Continue Anyway**' button when "Hardware Installation" dialog appeared.

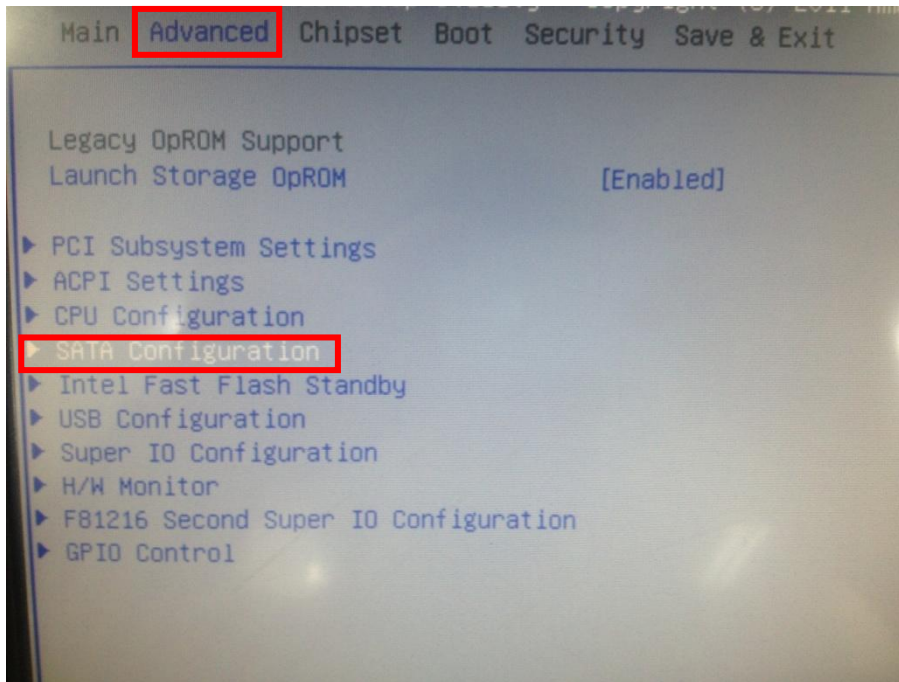


- ④ Restart your computer to click '**Finish**' button.

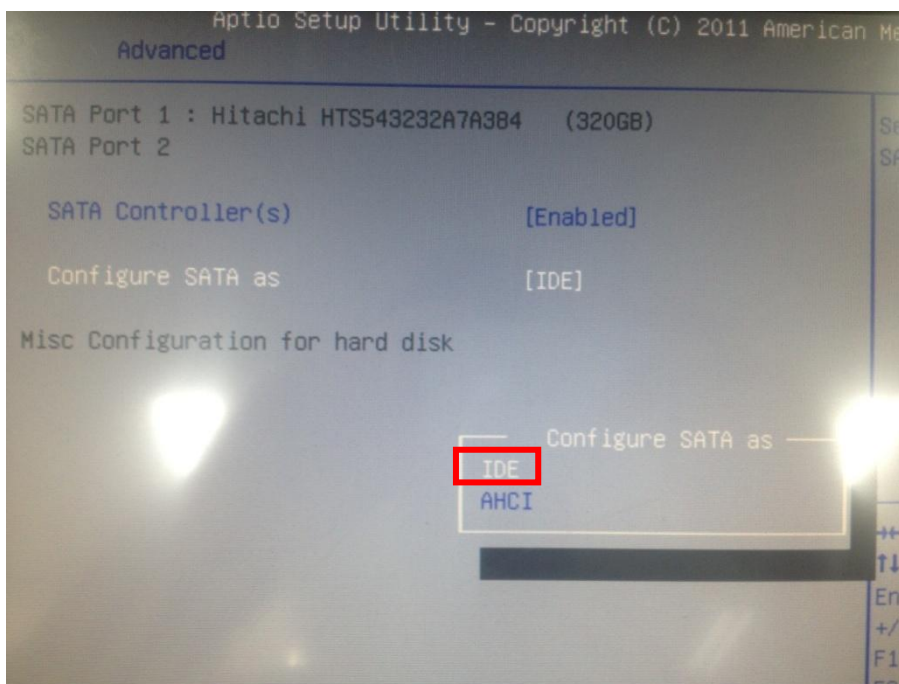


(5) Installation of AHCI Driver

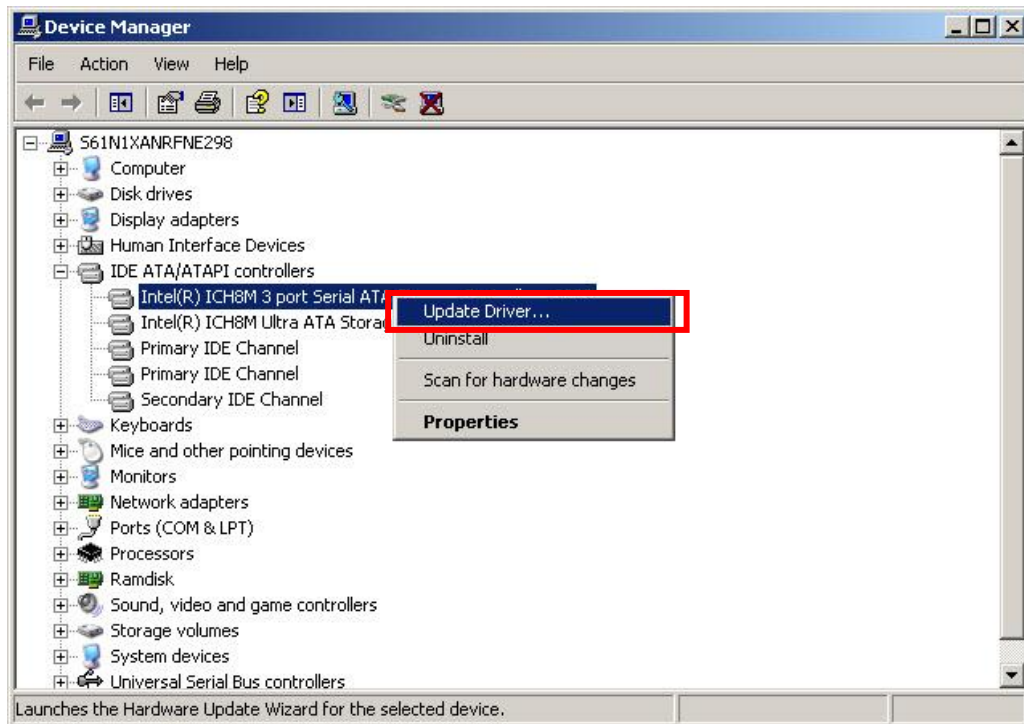
① BIOS Setup Utility



② Check Configure SATA as IDE Mode



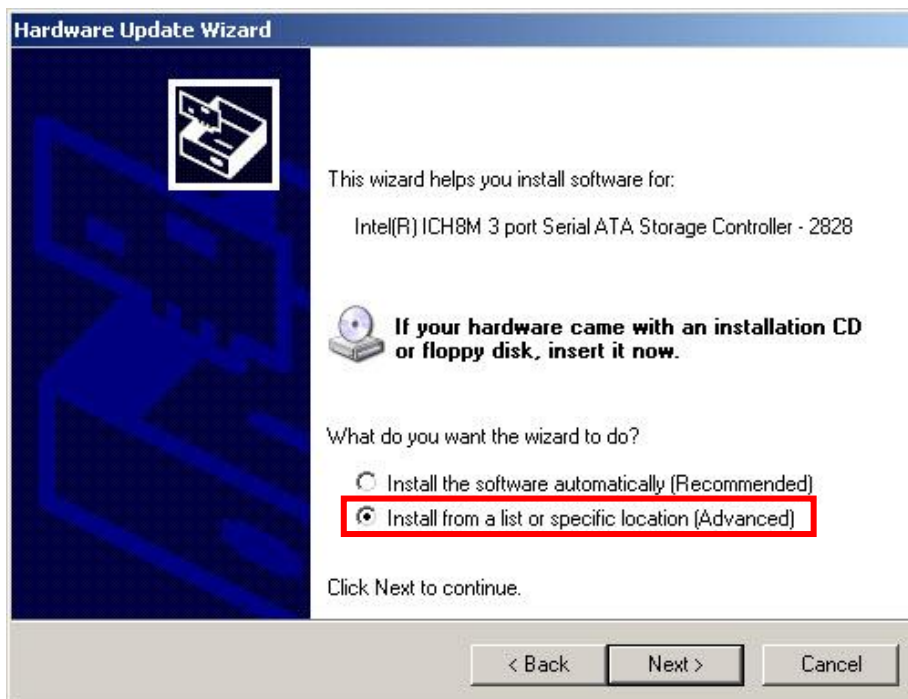
- ③ Press f10 'Save & reset' → 'Yes' and press enter
- ④ Windows start
- ⑤ 'Control Panel' → 'Device Manager' → 'IDE ATA/ATAPI controllers' → 'Serial ATA controller select' → Right Click → 'Update Driver...' click,



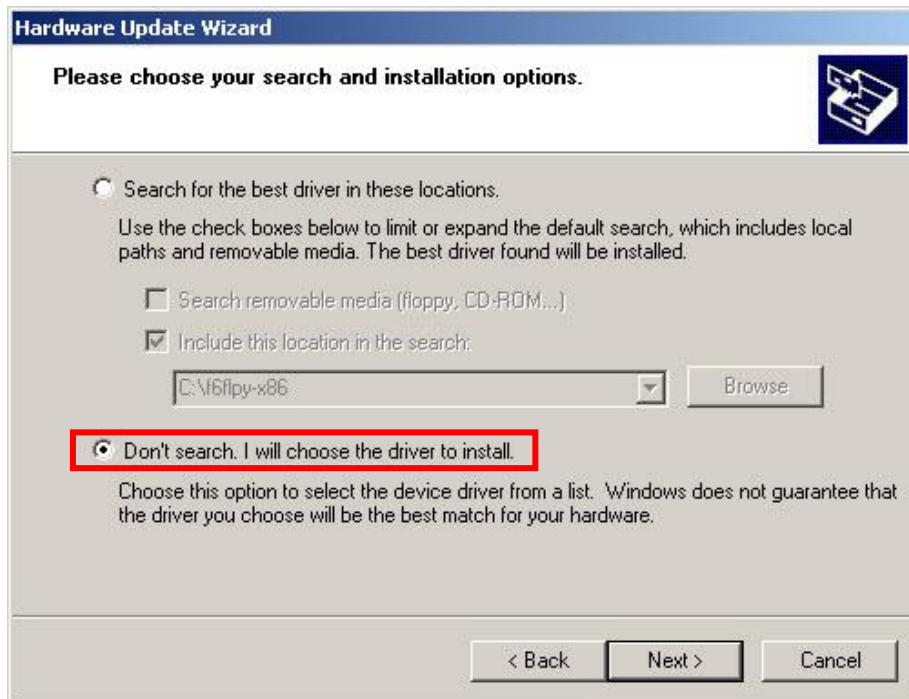
- ⑤ Select 'No, not this time'



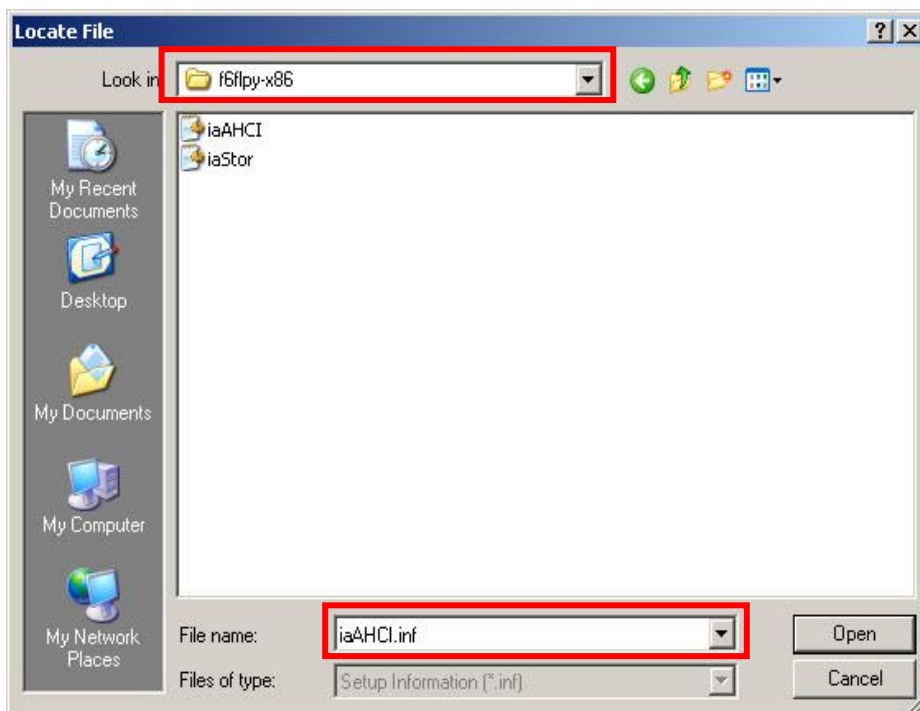
- ⑥ Select 'Install from a list or specific location (Advanced)'



- ⑦ Select 'Don't Search, I will choose the driver to install'



- ⑧ Select 'f6flpy-x86' folder and 'iaAHCI.inf' file

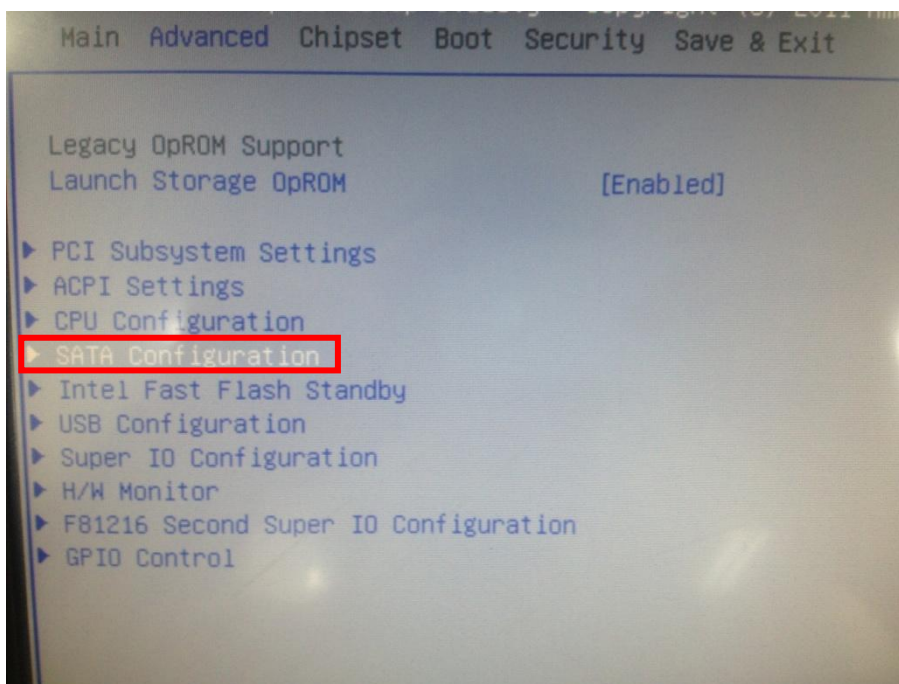


⑨ Select 'Yes'

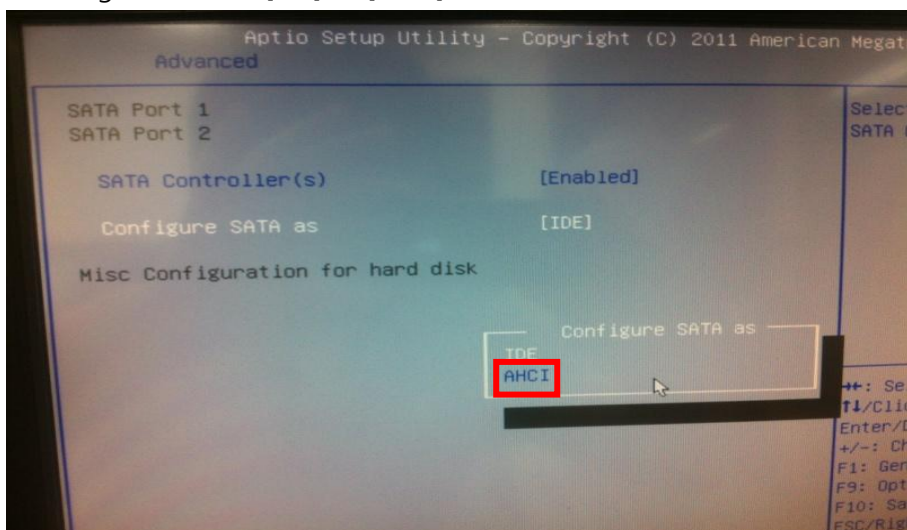


⑩ Rebooting

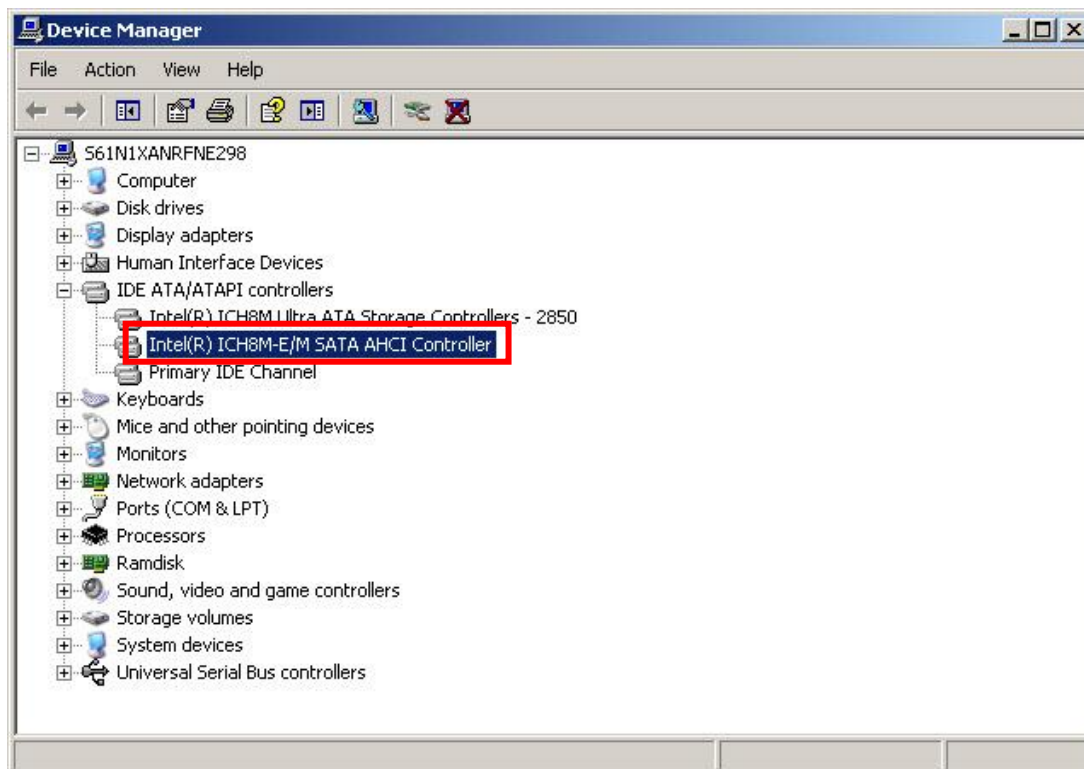
⑪ BIOS Setup Utility : 'Advanced'WConfigure SATA as' select



⑫ Configure SATA as [IDE] → [AHCI]



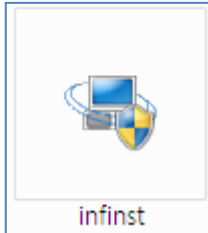
- ⑬ Press f10 'Save & reset' → 'Yes' and press enter
- ⑭ Start Windows
- ⑮ Control Panel' → 'Device Manager' → 'IDE ATA/ATAPI controllers' : Check AHCI Driver



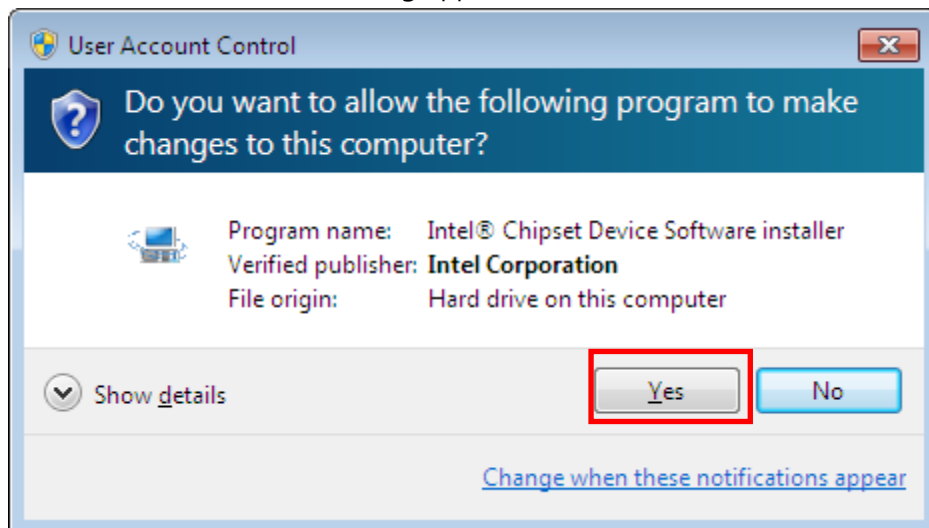
2. Windows 7

(1) Installation of Chipset Device Software

- ① Run '**infinst.exe**' file.



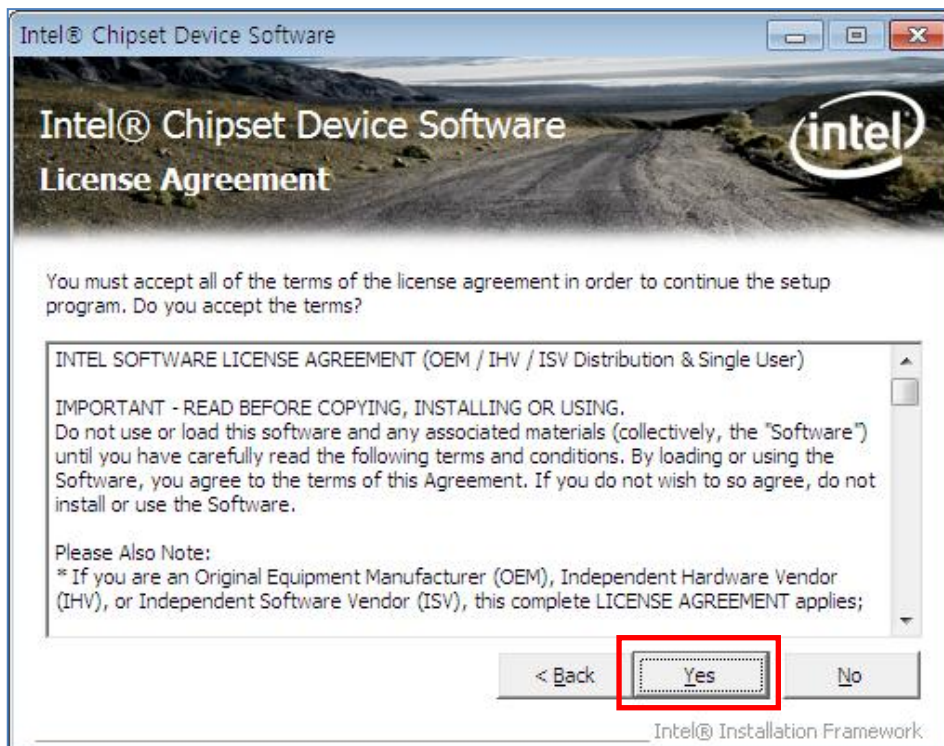
- ② Click '**Yes**' button when UAC dialog appeared.



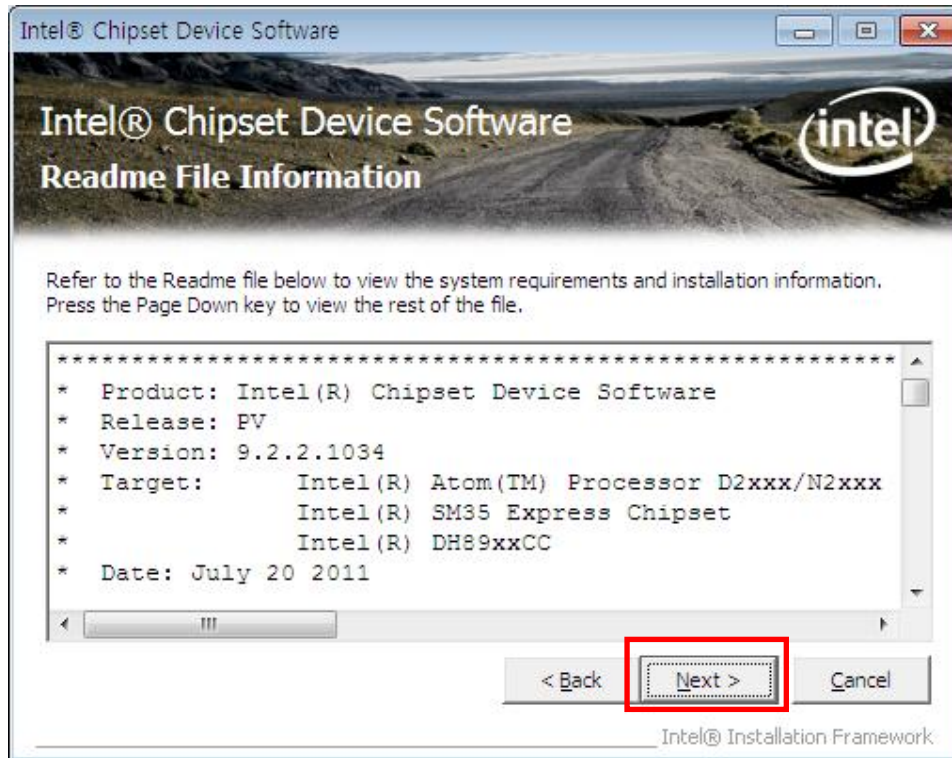
- ③ Click '**Next**' button when setup program started.



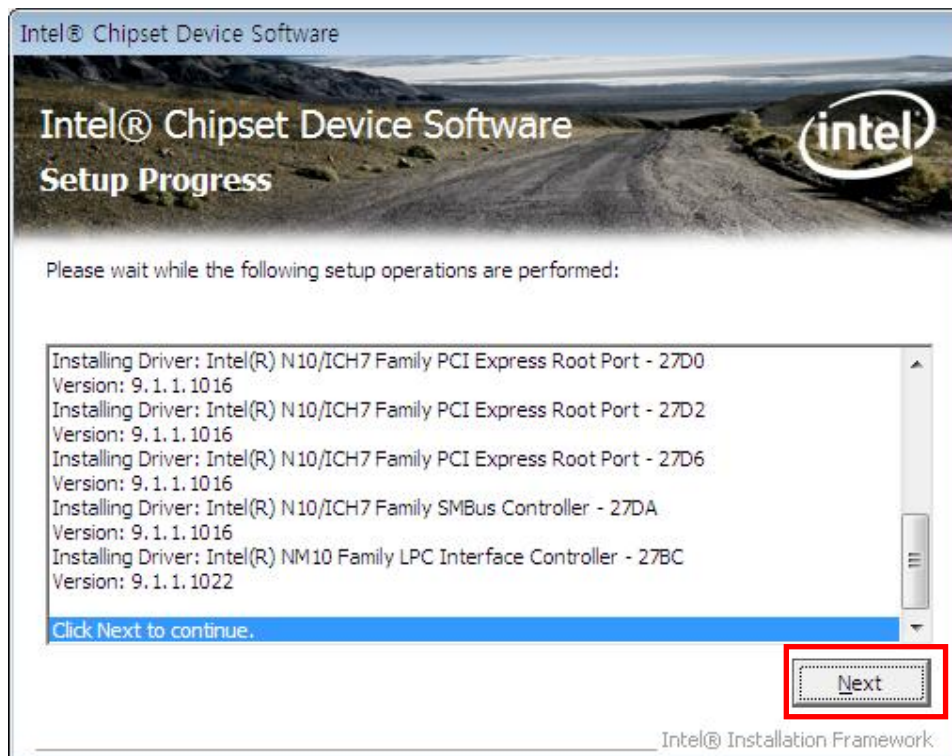
- ④ Click '**Yes**' button to accept the terms of the license agreement.



- ⑤ Click '**Next**' button when readme file appeared.



- ⑥ If the setup operation is finished, click '**Next**' button.



- ⑦ Restart your computer to click '**Finish**' button.

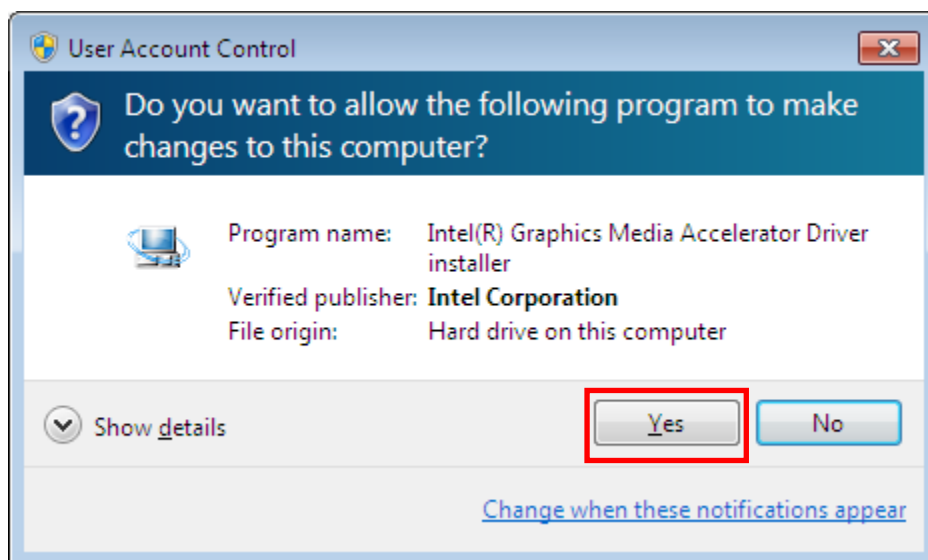


(2) Installation of Graphic Driver

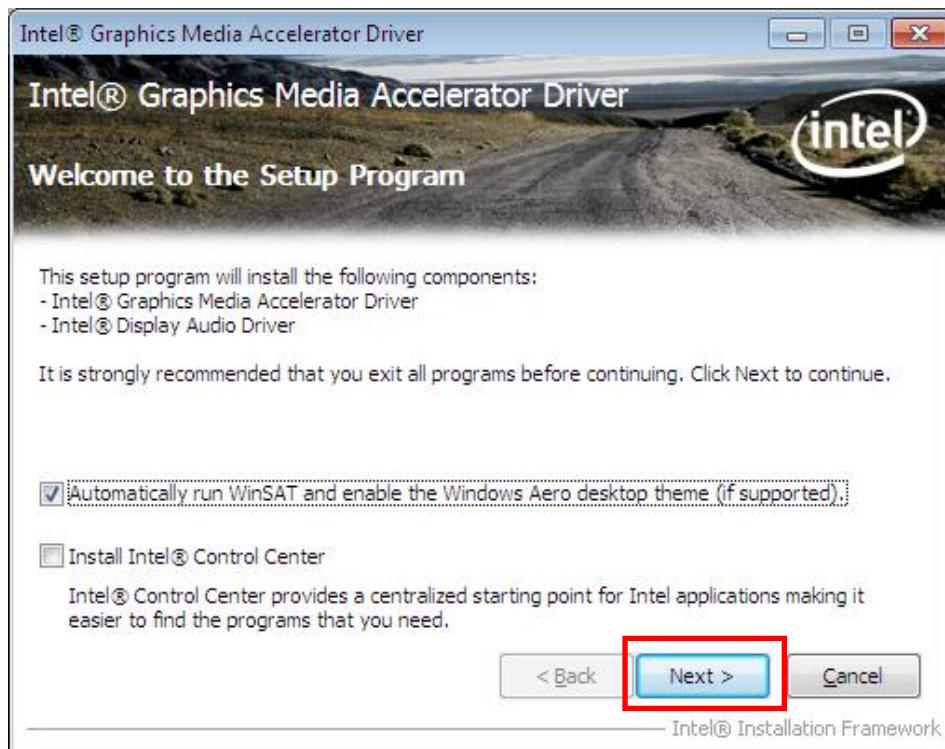
- ① Run '**Setup.exe**' file.



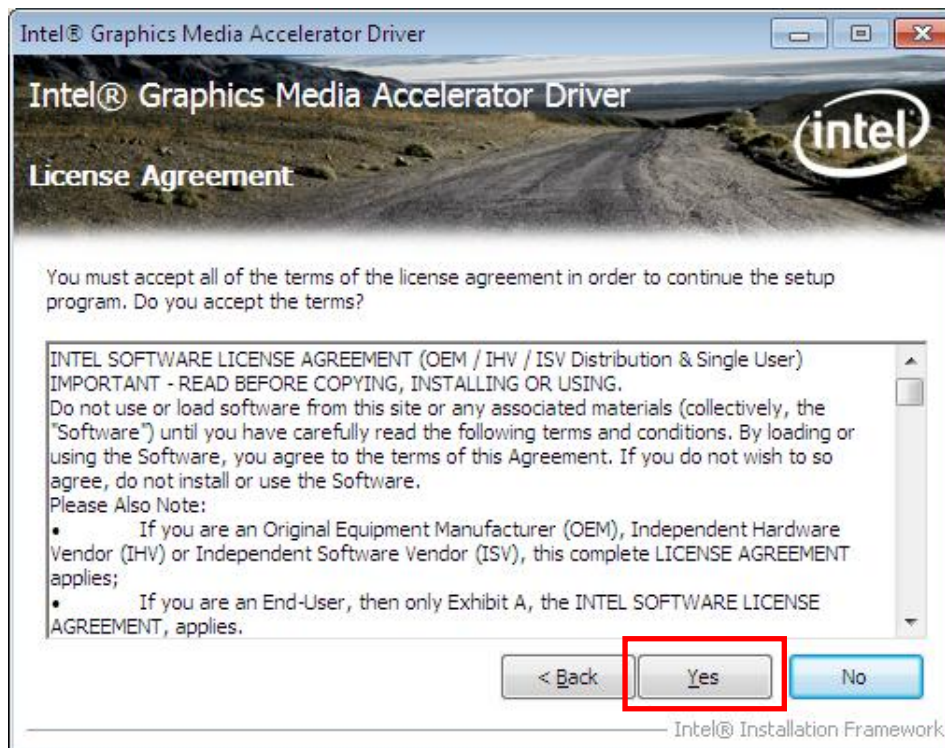
- ② Click '**Yes**' button when UAC dialog appeared.



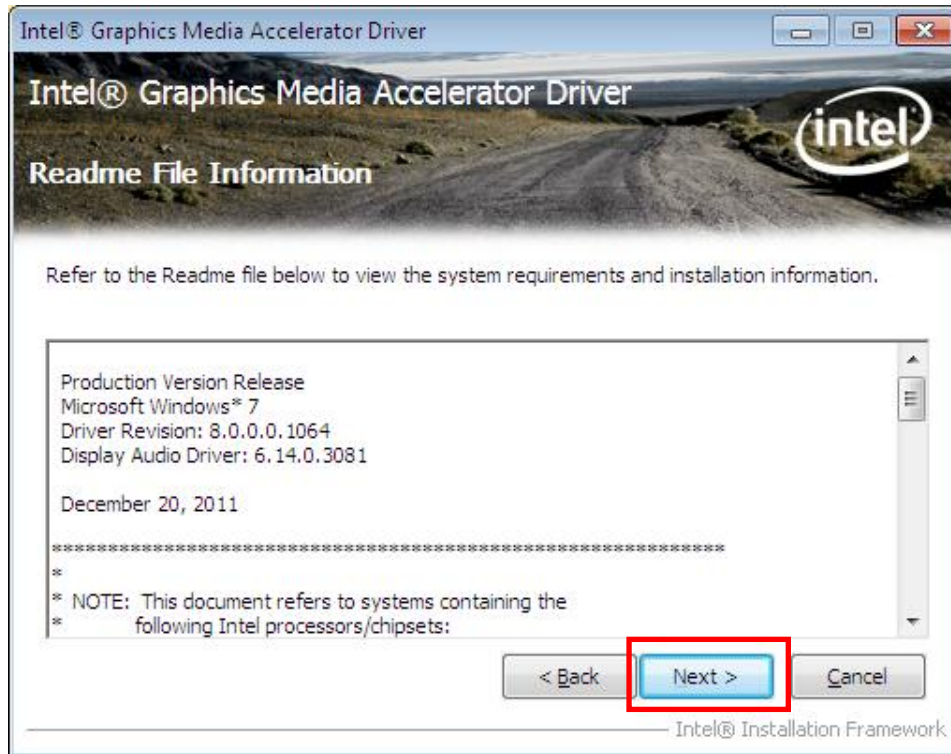
- ③ Click '**Next**' button when setup program started.



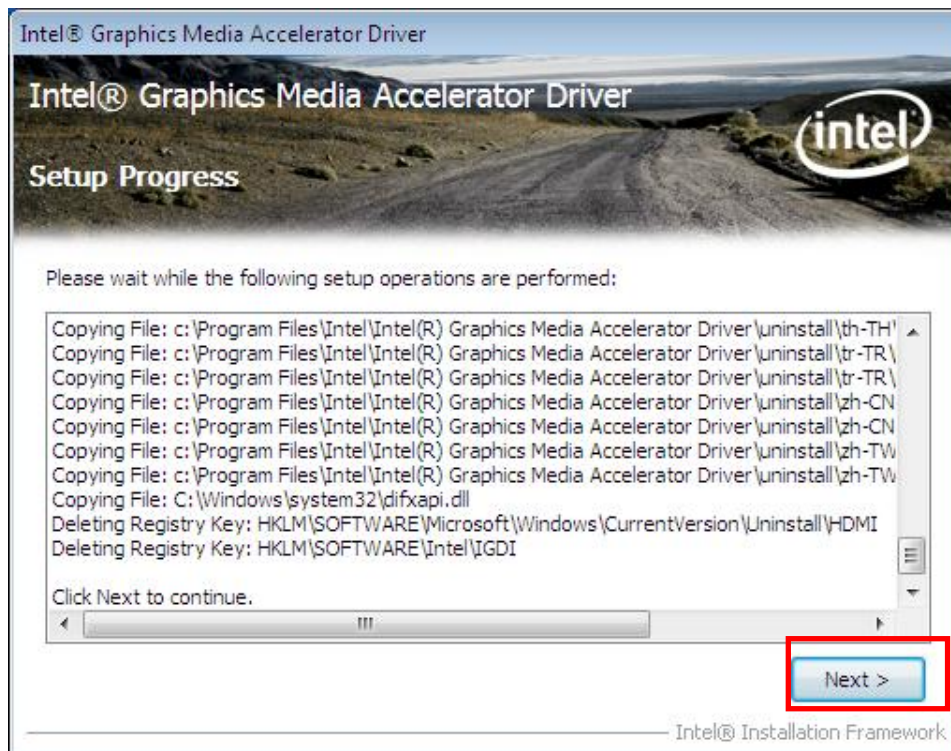
- ④ Click '**Yes**' button to accept the terms of the license agreement.



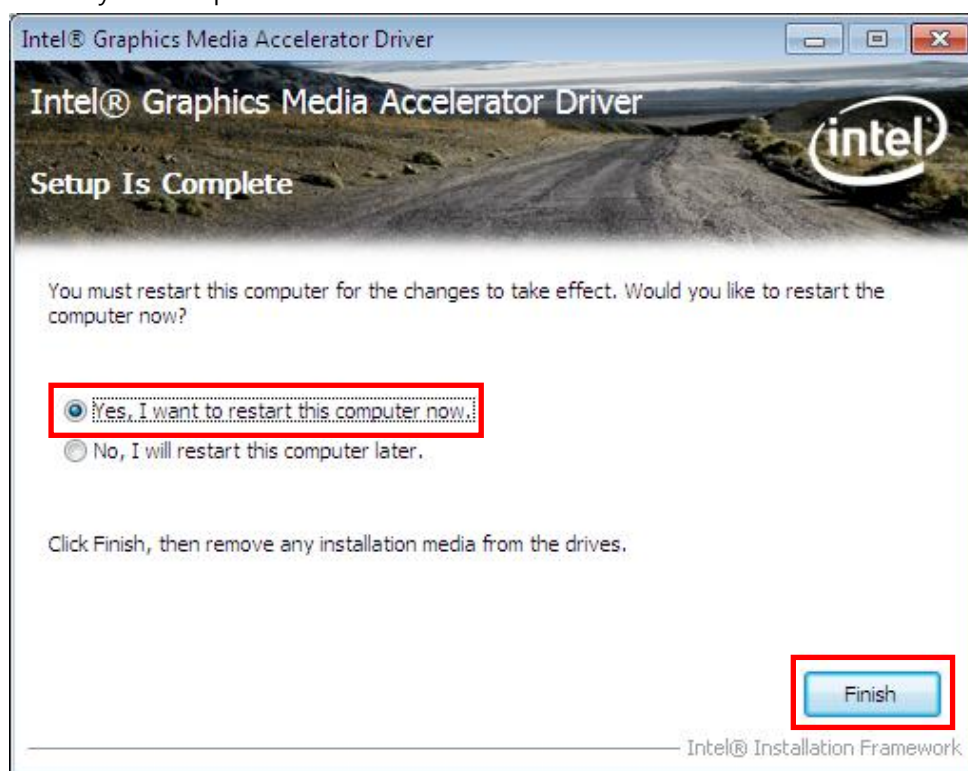
- ⑤ Click '**Next**' button when readme file appeared.



- ⑥ If the setup operation is finished, click '**Next**' button.

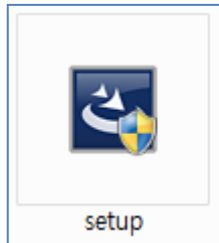


- ⑧ Restart your computer to click '**Finish**' button.

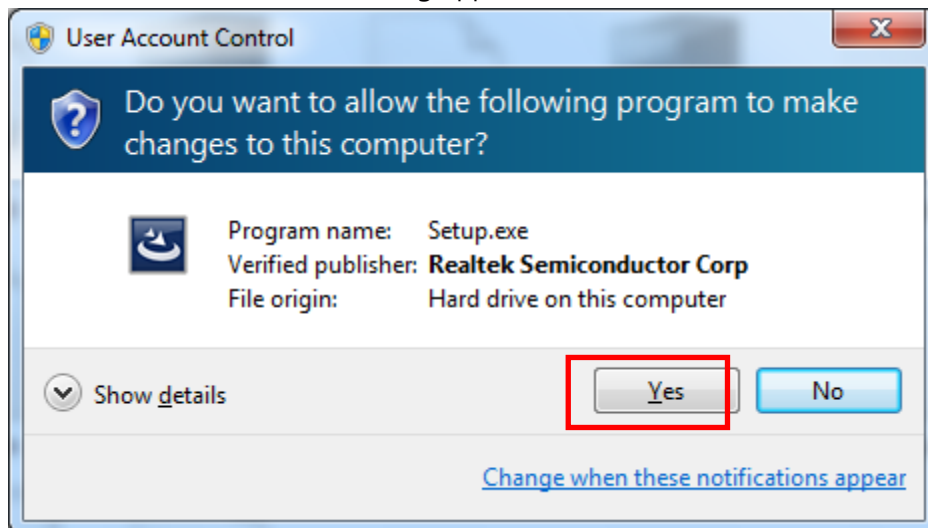


(3) Installation of LAN Driver

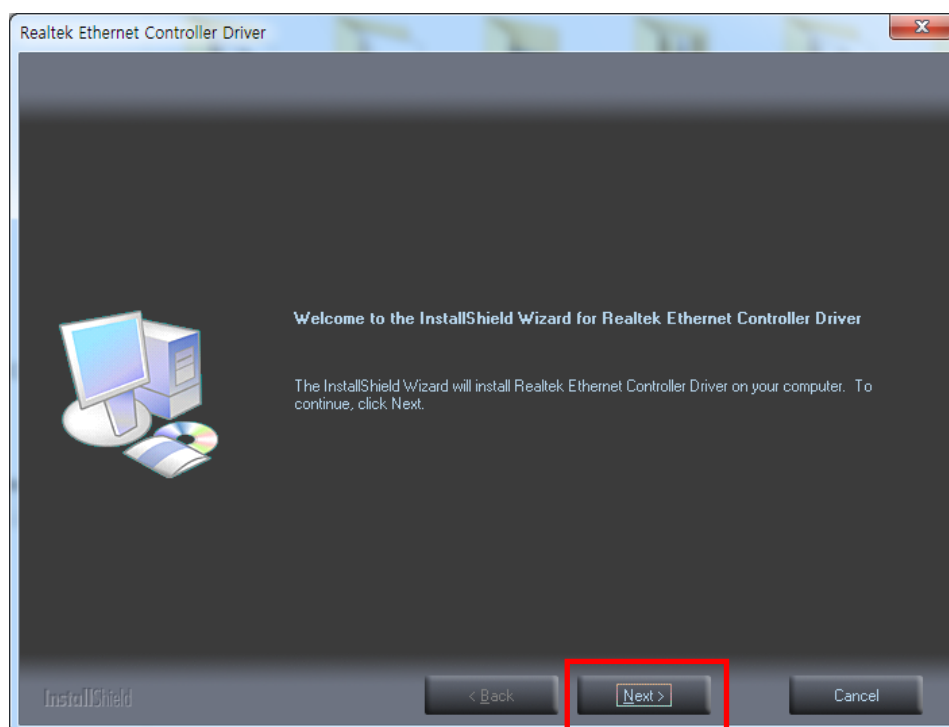
- ① Run '**Setup.exe**' file.



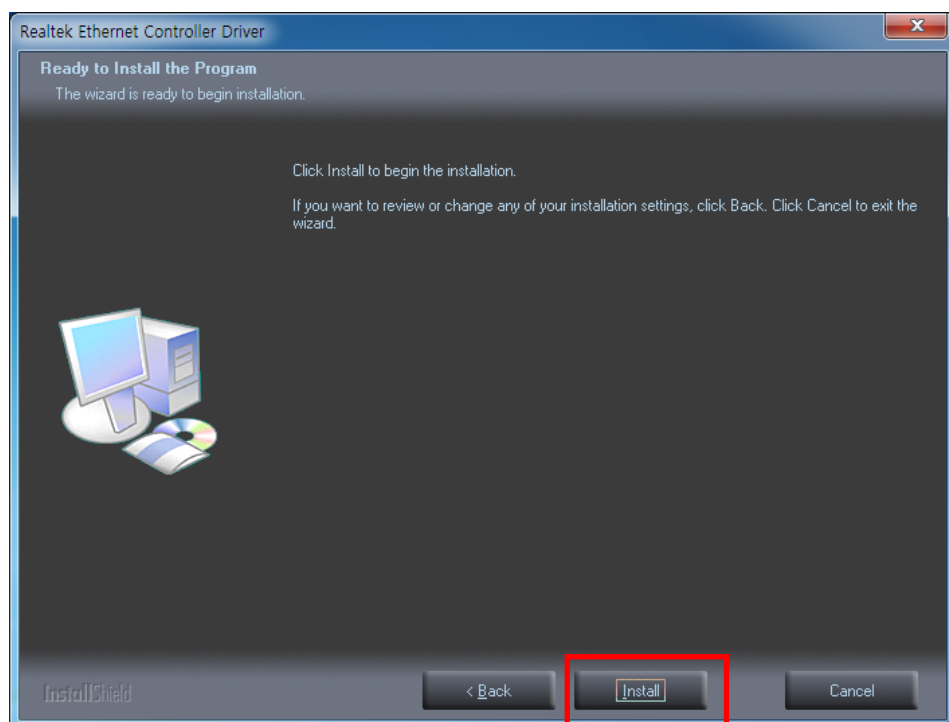
- ② Click '**Yes**' button when UAC dialog appeared.



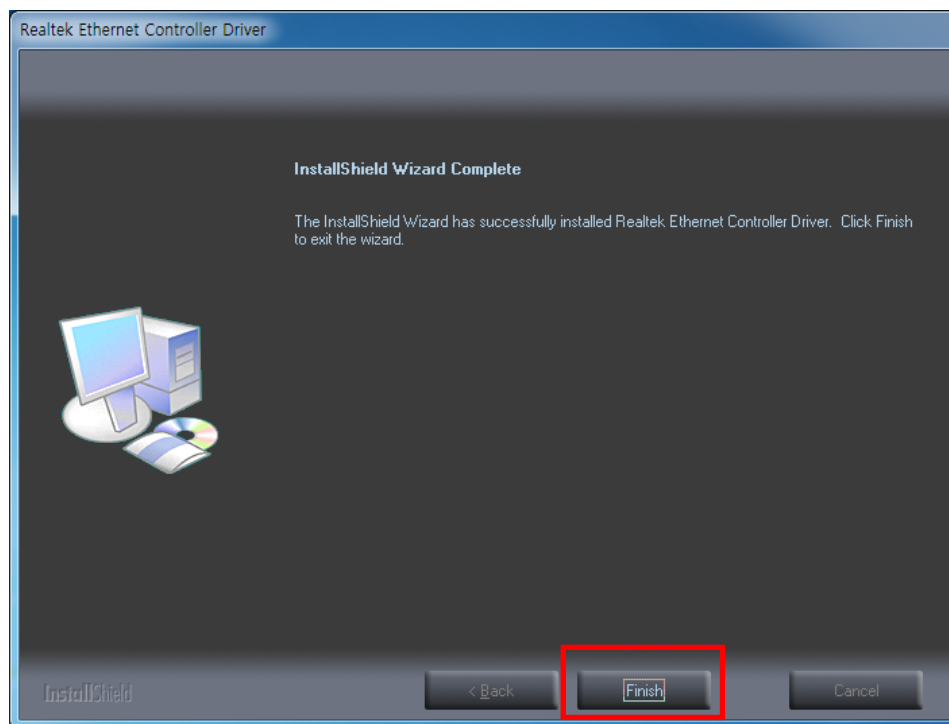
- ③ Click '**Next**' button when InstallShield Wizard started.



- ④ Click '**Install**' button.

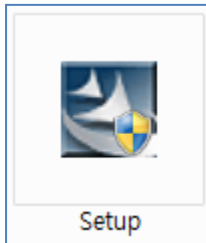


- ⑤ Click '**Finish**' button.

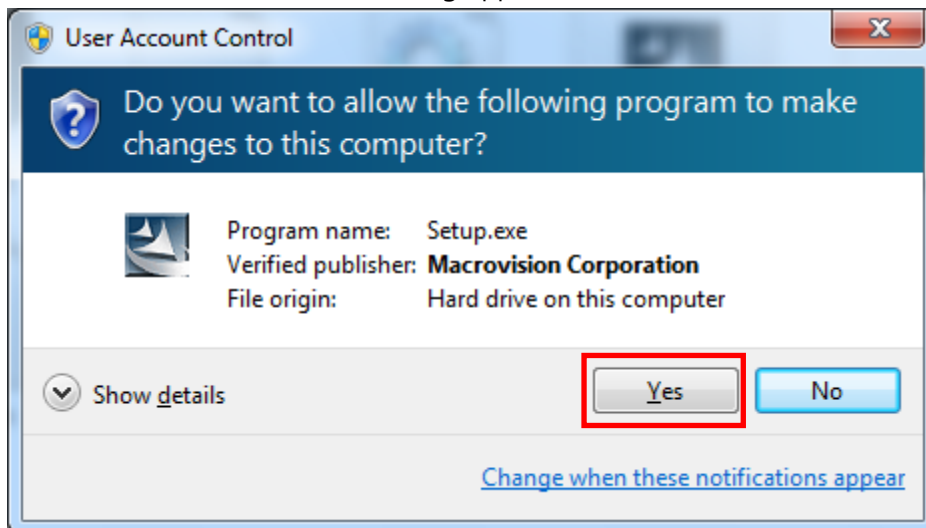


(4) Installation of Sound Driver

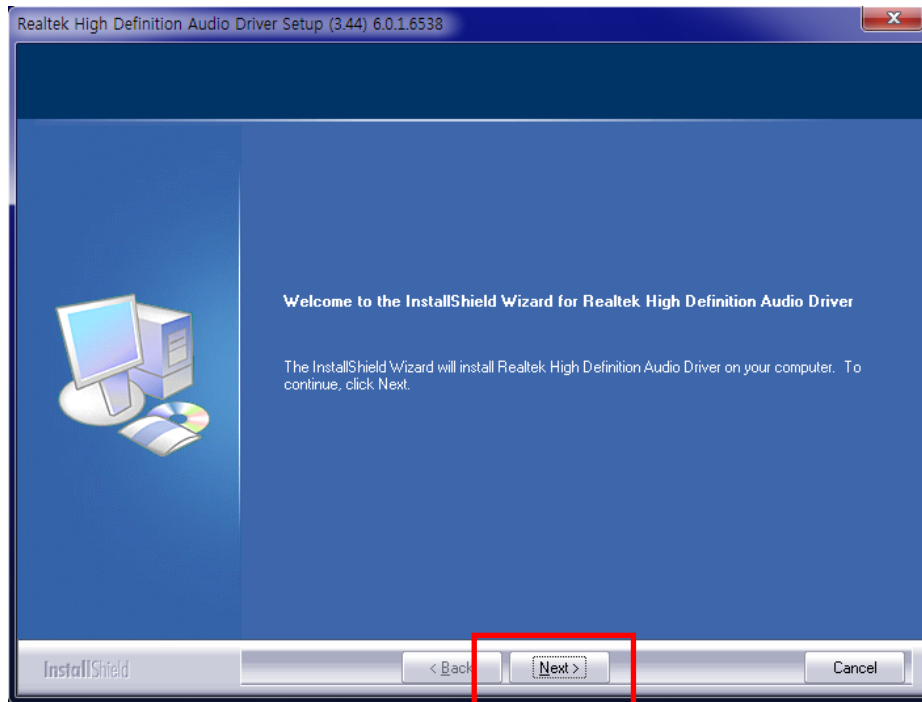
- ① Run '**Setup.exe**' file.



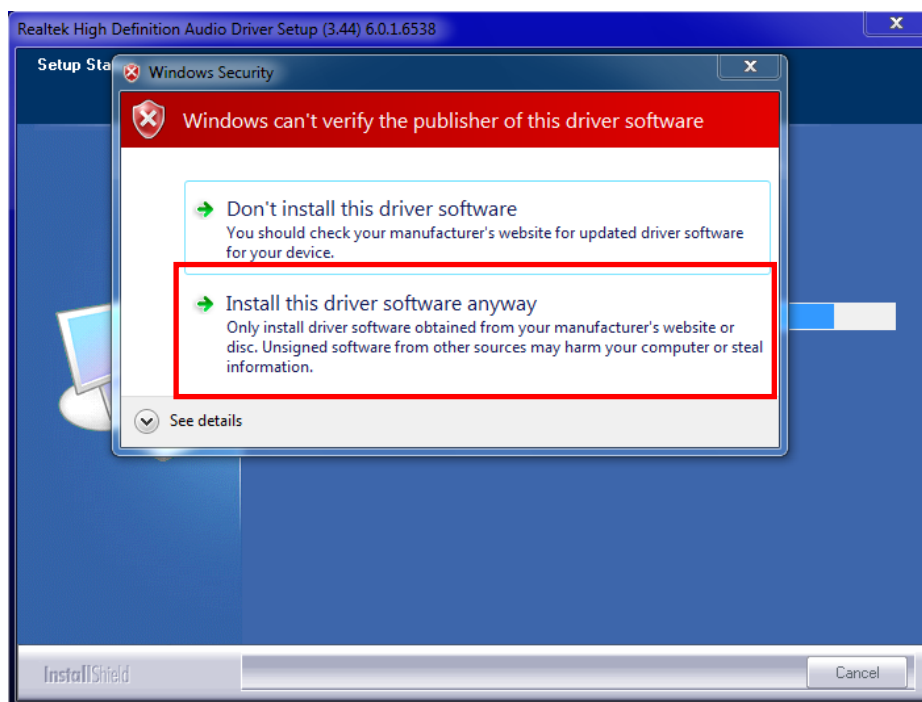
- ② Click '**Yes**' button when UAC dialog appeared.



- ③ Click '**Next**' button when the InstallShield Wizard started.



- ④ If you meet 'Windows Security' dialog like below, select '**Install this driver software anyway**'.



- ⑤ Restart your computer to click '**Finish**' button.

