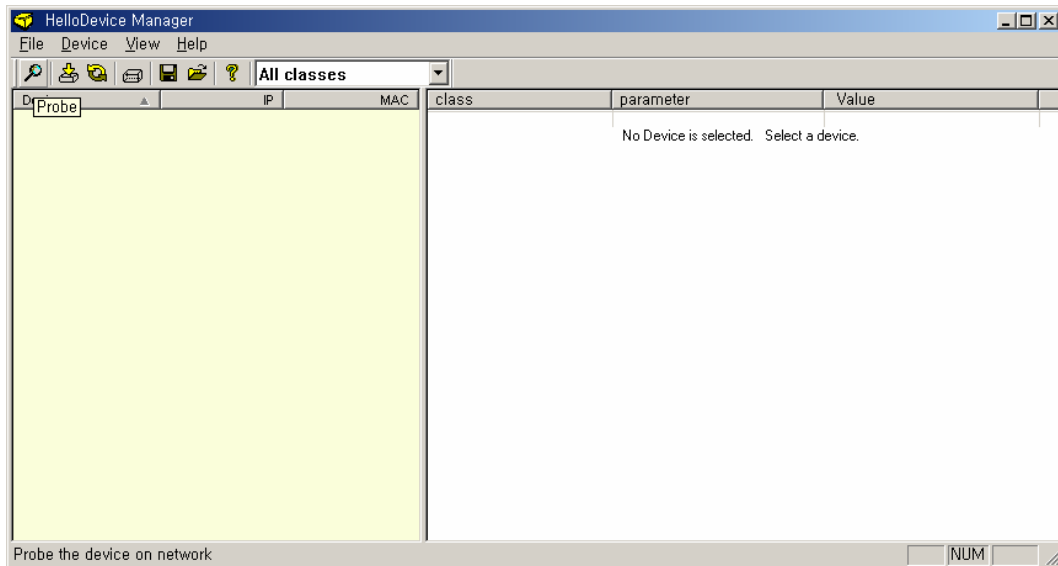


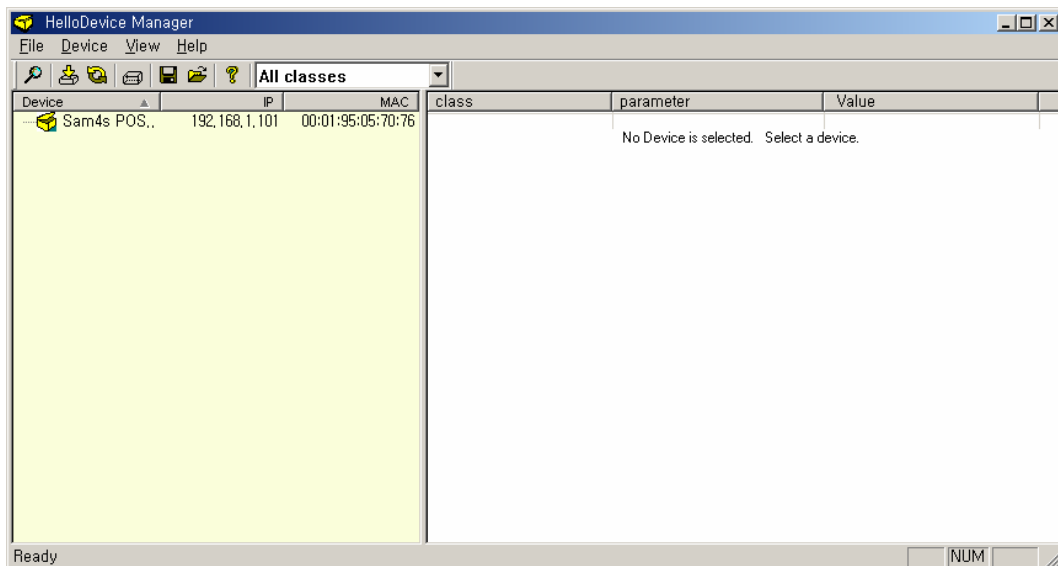
## Usage of ELLIX20 Ethernet Interface – 05/09/2006

### 1. Device Configuration.

1. Install the “HelloDeviceManager” to your PC.
2. And execute the “HelloDeviceManager” after connect the PC to ELLIX20 by correct cable.(Crossed RX and TX signal line cable or Direct connected cable)



3. You can find the connected device by “Device->Probe” menu click.



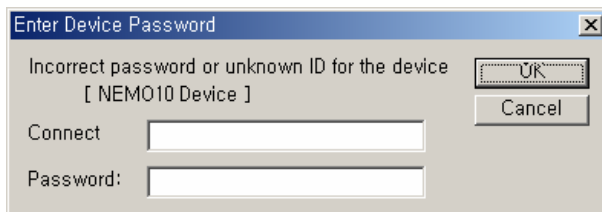
**NOTE :** If device is not appearing in dialog, please check the below condition.

- If you use the Windows XP SP2, you should add the exception program in “Windows fire wall setting of the control panel”.
- The Host pc must have a static IP address(whatever). If your PC use the DHCP for allocate the IP address, change the IP address to static IP address.
- Device and Host PC must be connected the same network area or direct connect.

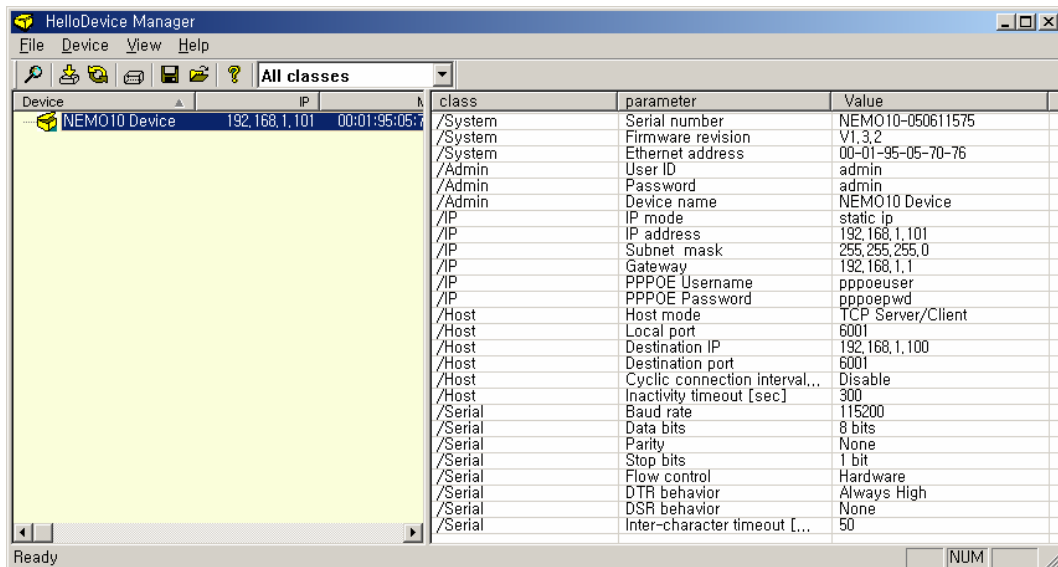
- **Selection of cable :**

The cross over cable is using the direct connect of HOST to Printer. And the direct cable is using the connection via HUB or ip-sharing device.

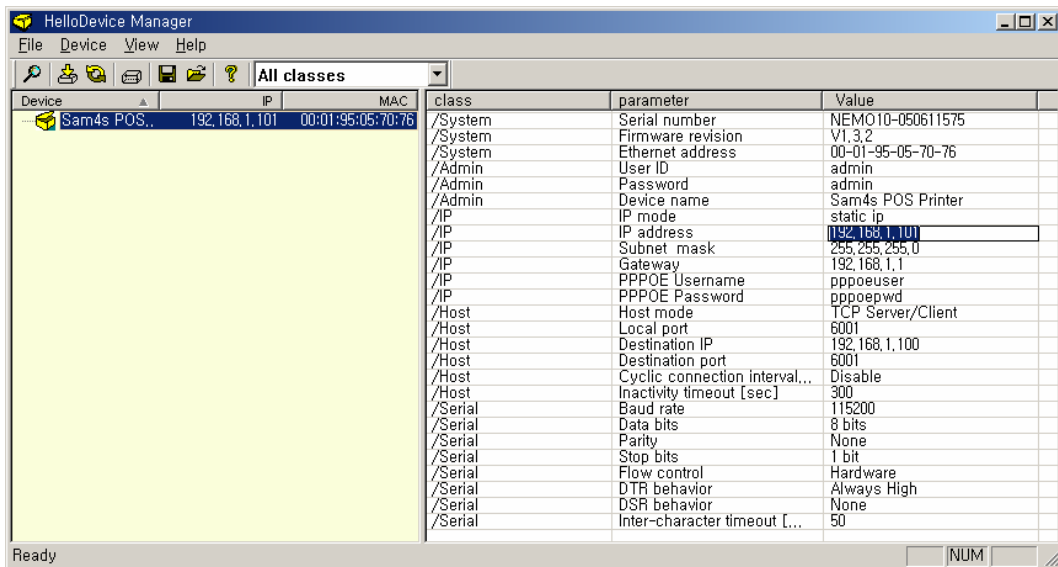
**4. Select the “Sam4s POS Printer” on the device window.**



**5. If you connect device in first time, default Connect and Password is all “admin”. It is can change to next step.**

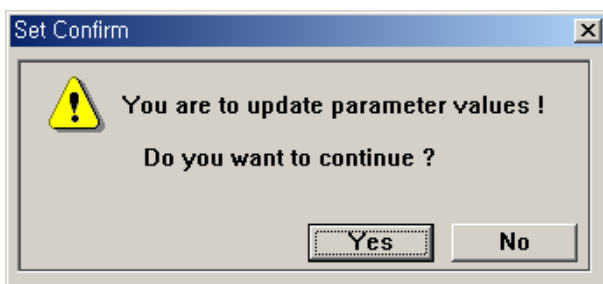


**6. You can change the setting value by click value on the right side of window.**

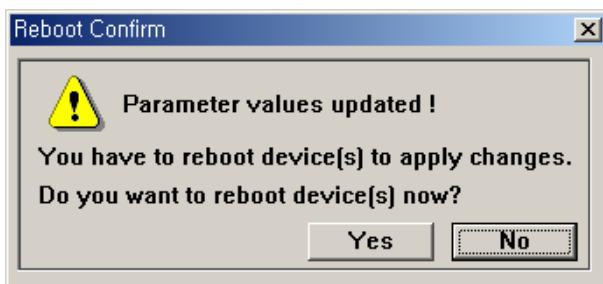


7. After changing the configuration, please perform “Device->Set” operation to download the configuration to your device.

8. Click “Yes” button for confirm the change value.



9. Click “Yes” button for reboot device(update device).



10. Click “Yes” button to finish the configuration update.

