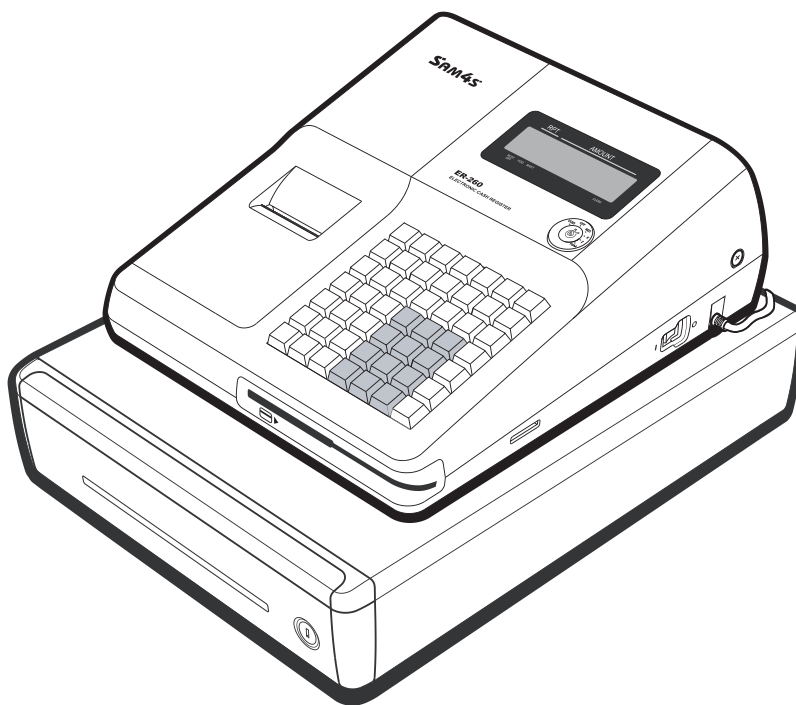

SAM4s ER-265 Series

PC Utility User's Manual



Central Cash Registers
410, Main Road, Ferreirastown
(Behind John Voster Square)
Johannesburg, South Africa.
Tel: (011) 836-9531/9512
Fax: (011) 838-1900.
Web: <http://www.centralcash.co.za>
Email: ccr@global.co.za,

All specifications are subject to change without notice.

Version 1.0

©2006, CCR, Inc.

Contents

Introduction	5
About the ER-265 PC Utility.....	5
Getting Started	7
Preparing the ER-265 for Communications	7
Installing the Utility.....	7
Starting the PC Utility	8
Store Settings.....	9
Upload/Download Programs	11
UpProgram	11
DownProgram	12
Edit Programs	13
Procedures	13
Program Edit Screens	14
Reports	19
Poll Reports	19
View Reports	20
Prepare & Load Bitmap Logos	23
Preparing a Graphic Logo Bitmap for an ER-265	23
Download a Graphic Logo to an ER-265	24
Printing the Logo Image – ER-265 Settings.....	25
Appendix	27
Cabling Diagrams	27

Introduction

About the ER-265 PC Utility

The ER-265 Series PC Utility provides basic PC communication functions for Sam4s ER-265. This utility was designed primarily as a dealer tool - to save, edit, and download programs.

Note: The ER-265 Series PC Utility supports only direct onsite connection to the ECR. Modem communications are not supported.

The ER-265 Series PC Utility includes the following features:

- Multiple Stores
- Save and Load ECR programs
- Convert & Download Logo Bitmaps
- Edit ECR programs
- Poll and View Register Reports

Note: The ER-265 Series PC Utility was developed to work best with a screen resolution of at least 1024 x 768 pixels.

Getting Started

Preparing the ER-265 for Communications

The register must be ready for communications:

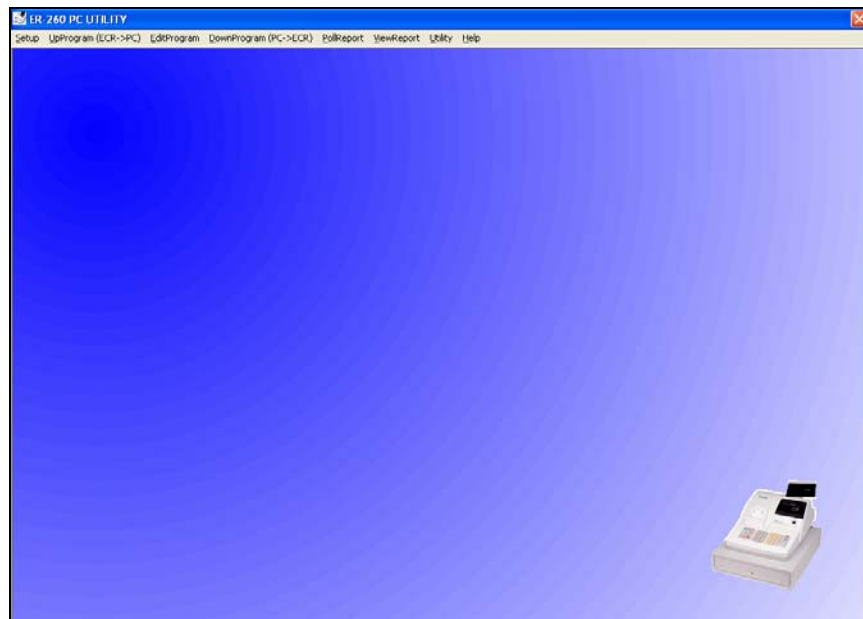
- Connect the register directly to the PC with the appropriate cable. See “Cabling Diagrams” on page 27.
- The register power must be on.
- Turn the key lock to the **S** position. (The unmarked position one click clockwise from the **PGM** lock position.)
- Press the **RA** key. “====CC====” displays.

Installing the Utility

1. From Windows Explorer, locate the file: SETUP260.exe. Double click the file to open the installation dialog box.
2. Follow the instructions on the screen to complete the installation.

Starting the PC Utility

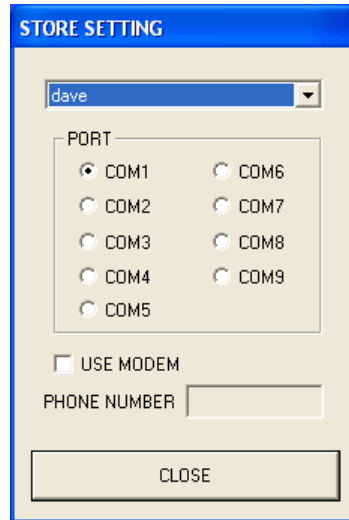
1. Choose **Start, Programs, SHC PC Utility** and then **ER-265 PC Utility**. The Store Setting dialog box displays.
2. Select the store you wish to open and click the **Close** button. The **ER-265 Series PC Utility** window opens.



Store Settings

There is no limit to the number of stores. When you start the utility for the first time, enter the store name and select the PC port (always select COM1).

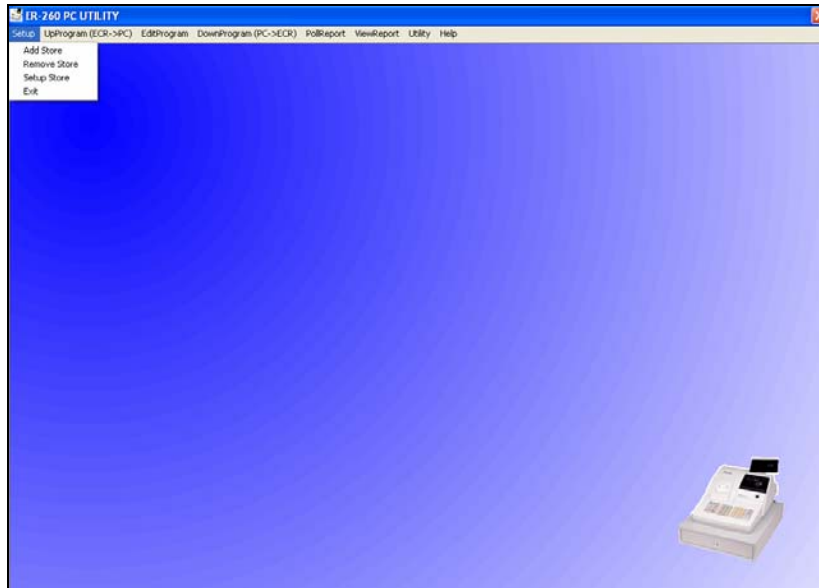
The Store Setting Dialog Box



Selecting a Store

- ◆ Select the working store when you start the utility.
- ◆ To change the working store after the utility has been started, choose **Setup Store** from the **Setup** menu and select a different store from the drop-down list box.

Setup Menu



Adding a Store

- ◆ Choose **Add Store** from the **Setup** menu. At the **Add Store** dialog, enter the store name and click **OK**. At the **Store Setting** dialog, select the PC port, baud rate and click the **Close** button.

Removing a Store

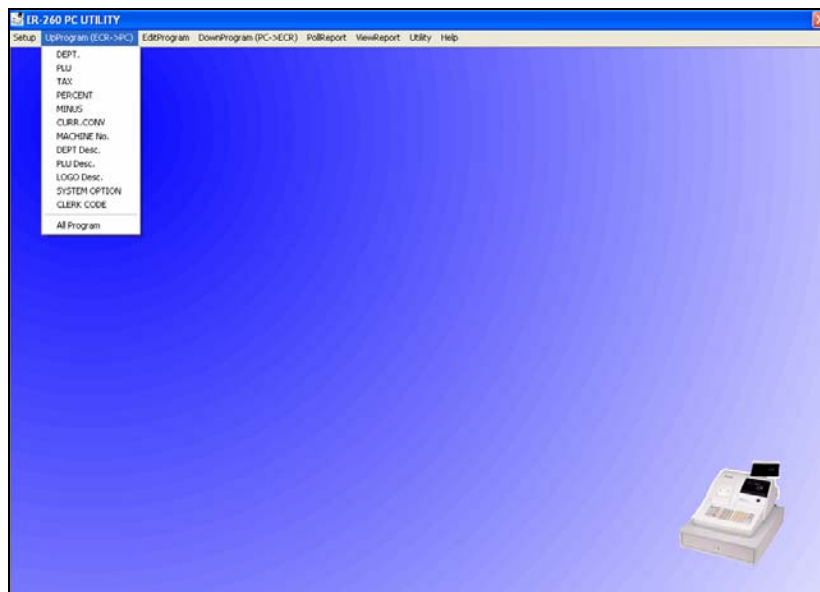
- ◆ Choose **Remove Store** from the **Setup** menu. At the **Remove Store** dialog, select the store name to remove and click **OK**.

Upload/Download Programs

UpProgram

You must upload a program before program edit functions are allowed.

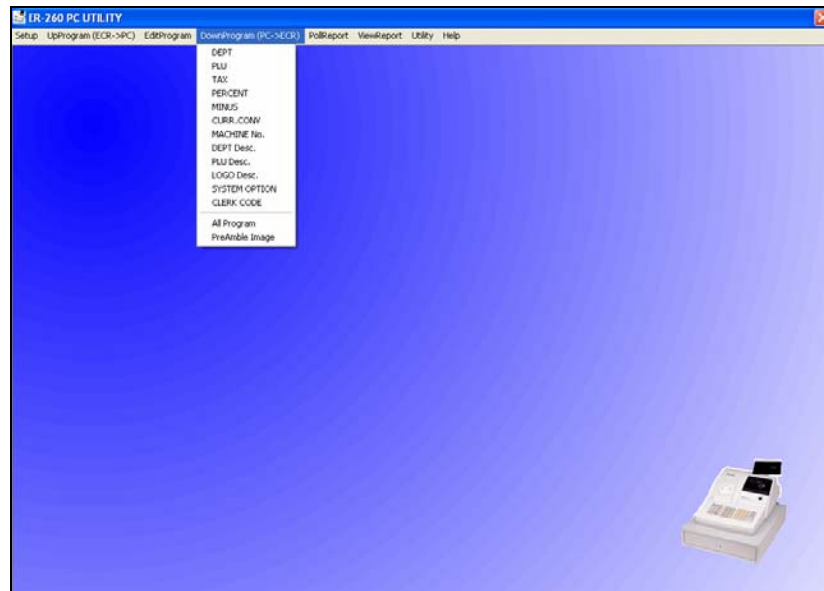
- ◆ Select the program segment you wish to upload from the **UpProgram** menu, or select **AllProgram** to upload the entire register program



DownProgram

Downloading a program will overwrite the existing register program.

- ♦ Select the program segment you wish to download from the **DownProgram** menu, or select **AllProgram** to download the entire register program (not including PreAmble image, that is downloaded separately.)



Note: Programs must be sent individually for registers using version 1.000 EPROM.

Edit Programs

Procedures

All register programs can be edited with the PC Utility. You will find options neatly organized on dialog boxes, making register option programming on the PC Utility more efficient than programming options at the register.

- **You must upload a program before program edit functions are allowed.**

1. To edit a program, choose the appropriate program from the **EditProgram** menu. An example of each program dialog box is shown in this chapter.
2. After edits, click **Save** to exit and save changes, or click **Cancel** to exit without saving changes.

Tips

- Each Store's data, including both uploaded program files and polled report files, is located in a separate folder under the ER-265PC folder.
- If you are building a new register program based upon an existing store, you can copy an existing store's program files to a new store folder. It is often more efficient to modify an existing program than to start over with a new one.
- If you have questions regarding the meaning of ECR features, refer the appropriate *ER-265 Program and Operation* manual for an explanation of your program options.

Program Edit Screens

Department

[illegible]

PLU

PROGRAMMING PLU

CODE	DESCRIPTOR	PRICE
1	Marlboro	99999.00
2		0.00
3		0.00
4		0.00
5		0.00
6		0.00
7		0.00
8		0.00
9		0.00
10		0.00
11		0.00
12		0.00
13		0.00
14		0.00
15		0.00
16		0.00
17		0.00
18		0.00
19		0.00
20		0.00
21		0.00
22		0.00
23		0.00
24		0.00
25		0.00
26		0.00
27		0.00
28		0.00
29		0.00
30		0.00
31		0.00

DESCRIPTOR

PRICE1

DEPT

☐ Negative
 ☐ Non-add Entry
 ☐ Disable
 ☐ Send KP

☐ Preset
 ☐ Single Item

Taxable by

☒ TAX1
 ☐ TAX2
 ☐ TAX3

SAVE

CANCEL

Tax

TAX

TAX1

☐ ADD ON RATE 0.000

☐ VAT

☒ TAX TABLE

GST TAXTABLE

☐ TAX 1

☐ TAX 2

☐ TAX 3

SAVE CANCEL

Percent

Percent

- %
- %
+ %

Calculate after discount/surcharge

☐ Rate 1 ☐ Rate 2 ☐ Rate 3

STATUS Override

RATE 10.000

OK Cancel

Minus

Minus

-

☐ CALCULATE RATE AFTER THE MINUS KEY?

☐ INACTIVE MINUS KEY

HDLO

☒ 0.01 - 99999.99 ☐ 0.01 - 0.09

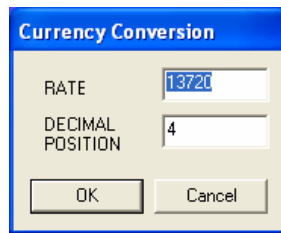
☐ 0.01 - 0.99 ☐ 0.01 - 9.99

☐ 0.01 - 99.99 ☐ 0.01 - 999.99

☐ 0.01 - 9999.99

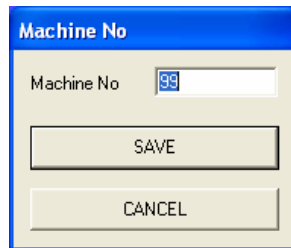
OK Cancel

Currency Conversion



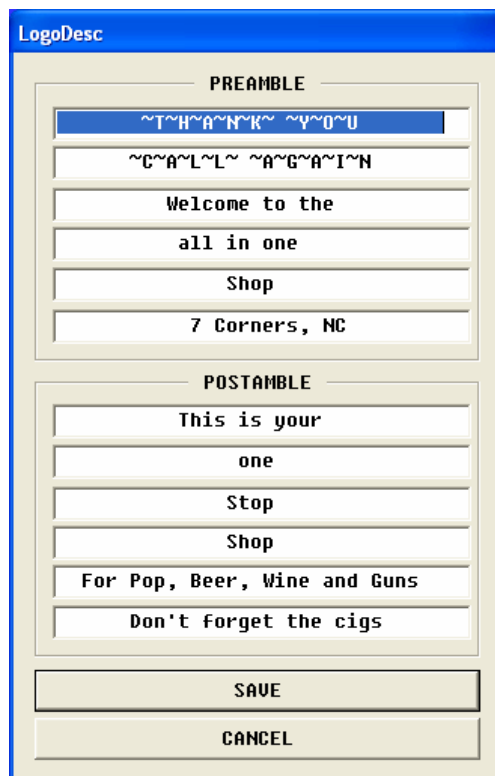
A screenshot of a 'Currency Conversion' dialog box. It has a blue title bar. Inside, there are two input fields: 'RATE' with the value '13720' and 'DECIMAL POSITION' with the value '4'. At the bottom are 'OK' and 'Cancel' buttons.

Machine No.



A screenshot of a 'Machine No.' dialog box. It has a blue title bar. Inside, there is a label 'Machine No' followed by an input field containing '99'. At the bottom are 'SAVE' and 'CANCEL' buttons.

Logo & Descriptor



A screenshot of a 'LogoDesc' dialog box. It has a blue title bar. The main area is divided into two sections: 'PREAMBLE' and 'POSTAMBLE'. The 'PREAMBLE' section contains six text boxes with the following text: '~T~H~A~N~K~ ~V~O~U', '~C~A~L~L~ ~A~G~A~I~N', 'Welcome to the', 'all in one', 'Shop', and '7 Corners, NC'. The 'POSTAMBLE' section contains six text boxes with the following text: 'This is your', 'one', 'Stop', 'Shop', 'For Pop, Beer, Wine and Guns', and 'Don't forget the cigs'. At the bottom are 'SAVE' and 'CANCEL' buttons.

System Option

SYSTEM OPTION	
<input checked="" type="checkbox"/> PRINT GRAND TOTAL IN X,Z REPORT	ROUNDING FOR PERCENTAGE KEY AND TAX <input checked="" type="radio"/> ROUND UP AT 0.5 <input type="radio"/> ALWAYS ROUND UP <input type="radio"/> ALWAYS ROUND DOWN
<input checked="" type="checkbox"/> PRINT GROSS TOTAL IN X,Z REPORT	
<input type="checkbox"/> RESET CONSECUTIVE NUMBER AFTER Z REPORT	
<input type="checkbox"/> RESET COUNTER AFTER Z REPORT	
<input checked="" type="checkbox"/> ZERO SKIP ON X,Z REPORT	DECIMAL MULTIPLICATION AND SPLIT PRICE <input checked="" type="radio"/> ROUND UP AT 0.5 <input type="radio"/> ALWAYS ROUND UP <input type="radio"/> ALWAYS ROUND DOWN
<input type="checkbox"/> RESET GRAND TOTAL AFTER Z REPORT	
<input checked="" type="checkbox"/> PRINT SUBTOTAL	
<input type="checkbox"/> CASH DECLARED BEFORE X,Z REP	
<input checked="" type="checkbox"/> SELECT X REPORT ALLOWED	<input type="checkbox"/> ALLOW POST TENDER
DECIMAL POSITION <input type="text" value="2"/>	<input type="checkbox"/> ALLOW CHECK CASHING
SELECT INFORMATION OF TAX	SELECT INFORMATION OF CLERK
<input type="checkbox"/> NOT PRINT TAXABLE TOTAL	<input type="text" value="NOT ALLOW FUNCTION OF CLERK"/>
<input type="radio"/> PRINT SEPARATELY TAX AMOUNT	<input type="checkbox"/> ALLOW RECEIPT AFTER SALE
<input type="radio"/> PRINT TAX AMOUNT TOTAL	<input type="checkbox"/> ENFORCE CASH OR CHECK TENDER AT TOTALING
<input type="radio"/> NOT PRINT TAX AMOUNT	DATE SEQUENCE <input type="text" value="DD-MM-YY"/>
PRINT TAXABLE TOTAL	<input checked="" type="checkbox"/> DRAWER COMPULSORY
<input checked="" type="radio"/> PRINT SEPARATELY TAX AMOUNT	<input type="checkbox"/> USE SPOOL
<input type="radio"/> PRINT TAX AMOUNT TOTAL	<input checked="" type="checkbox"/> PAPER END SENSOR(RECEIPT)
<input type="radio"/> NOT PRINT TAX AMOUNT	<input checked="" type="checkbox"/> PAPER END SENSOR(JOURNAL)
CURRENCY SYMBOL <input type="text" value="\$"/>	<input type="checkbox"/> OVERLAY DESCRIPTOR
EJ ENABLE <input type="text" value="EJ FROM NEWE"/>	<input checked="" type="checkbox"/> USE KITCHEN PRINTER(ELLIX20)
<input checked="" type="checkbox"/> PROMPT OPERATOR WHEN EJ IS FULL	SMALL FONT <input type="text" value="NOT PRINT FOR JOURNAL PRN"/>
<input type="checkbox"/> STOP OPERATION WHEN EJ IS FULL	ENDING FEEDING LINE ON KP(0-9) <input type="text" value="4"/>
<input type="checkbox"/> RESET REPORT TO EJ	<input checked="" type="checkbox"/> PRE PRINT GRAPHIC LOGO ON RECEIPT?
<input type="checkbox"/> PRN DEEP COLOR FOR PRINTER	
<input type="button" value="SAVE"/>	<input type="button" value="CANCEL"/>

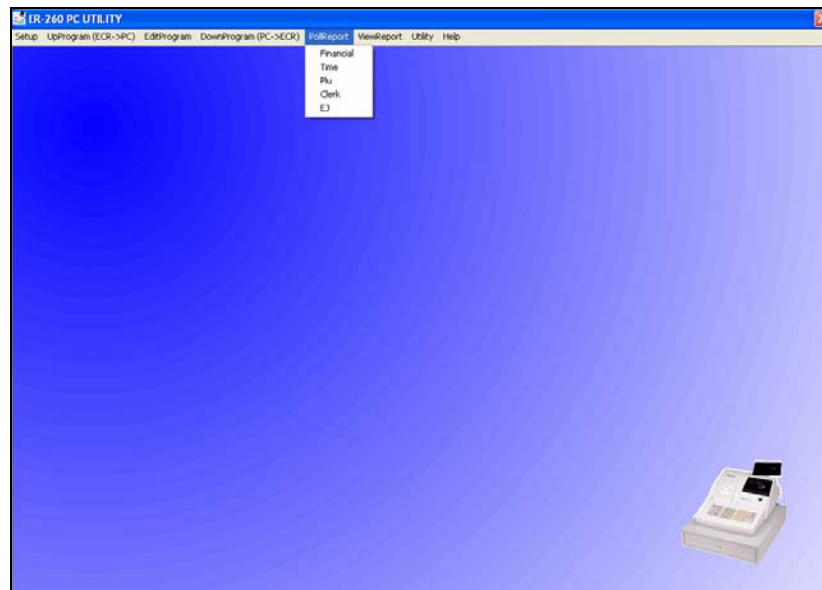
Clerk Code

CLERK CODE	
CLERK1 CODE	<input type="text" value="0"/>
CLERK2 CODE	<input type="text" value="0"/>
CLERK3 CODE	<input type="text" value="0"/>
CLERK4 CODE	<input type="text" value="0"/>
CLERK5 CODE	<input type="text" value="0"/>
CLERK6 CODE	<input type="text" value="0"/>
CLERK7 CODE	<input type="text" value="0"/>
CLERK8 CODE	<input type="text" value="0"/>
CLERK9 CODE	<input type="text" value="0"/>
CLERK10 CODE	<input type="text" value="0"/>
<input type="button" value="SAVE"/>	
<input type="button" value="CANCEL"/>	

Reports

Poll Reports

- ◆ Select the report you wish to poll from the **PollReport** menu.



Note: The register must be in download mode:

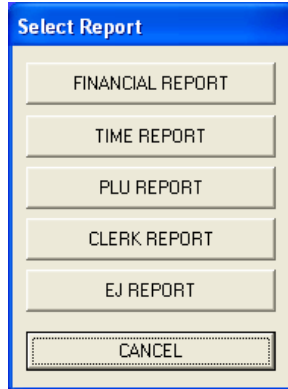
Turn the key lock to the S position. (The unmarked position one click clockwise from the PGM lock position.)

Press the RA key. “====CC====” displays. The register is ready to be polled.

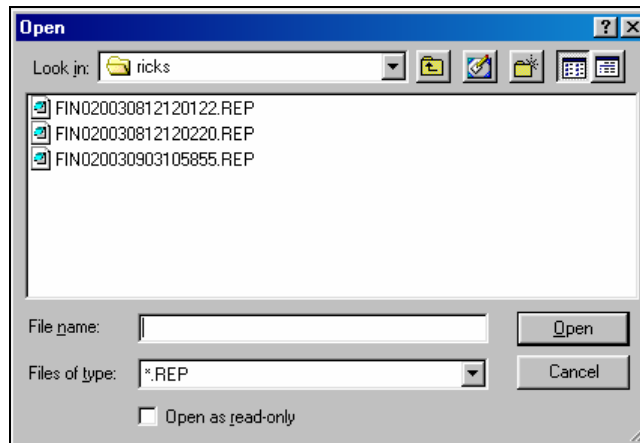
View Reports

Note: Polled report can only be viewed with the built-in viewer. Report files are not ASCII format, nor can they be converted to ASCII format with this utility

1. Select the Individual Report from the ViewReport menu.



2. Click the button that represents the report you wish to view.



3. Select the report you wish to view and click **Open**.

Click to display the report without totals that have zero values

Click to view the next page of the report.

DESCRIPTION	COUNT	TOTAL
FINANCIAL REPORT	X1	08/12/2003 12:02:20
+PLU TTL	80.00	300.78
-PLU TTL	0.00	0.00
ADJUST TTL	80.00	300.78
NONTAX	2	8.38
TAX1 SALES	0	289.45
TAX2 SALES	0	289.45
TAX3 SALES	0	286.45
TAX4 SALES	0	292.40
TAX1	0	18.74
TAX2	0	17.50
TAX3	0	17.32
TAX4	0	17.68
XMP11 SALES	0	0.00
XMP12 SALES	0	0.00
XMP13 SALES	0	0.00
XMP14 SALES	0	0.00
EATIN TTL	0	0.00
TAKEOUT TTL	0	0.00
DRTHRU TTL	0	0.00
% 1	0	0.00
% 2	0	0.00
% 3	0	0.00
% 4	0	0.00
% 5	0	0.00
NET SALE	50	372.02
CREDIT TAX1	0	0.00
CREDIT TAX2	0	0.00
CREDIT TAX3	0	0.00
CREDIT TAX4	0	0.00
FD/S CREDIT	0	0.00

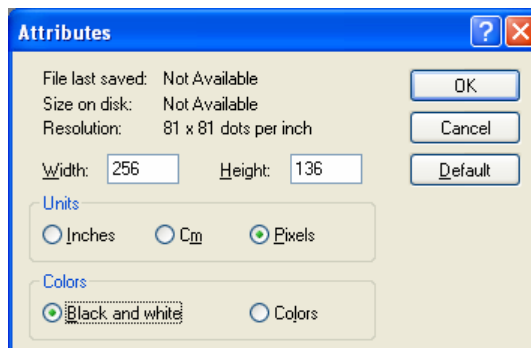
4. Use the scroll bar or the arrow buttons to view the report

Prepare & Load Bitmap Logos

Preparing a Graphic Logo Bitmap for an ER-265

The image must be black/white, 256 x 136 pixels, and 5 Kbytes or less in size.

1. Open MS Paint.
2. Open the image file you wish to use.
3. Choose **Attributes** from the **Image** menu. The **Attributes** dialog box displays.



4. The image dimensions must be no larger than 256 pixels wide by 136 pixels high. If the image size in pixels is greater than the maximum, you must resize your image.
 - a. Click **OK** to exit the Attributes dialog.
 - b. Select your image. (Choose **Select All** from the **Edit** menu.)
 - c. Using the handles of the selected image, resize the image. Keep the image in the upper left corner of the screen.
 - d. Choose **Attributes** from the **Image** menu. The **Attributes** dialog box displays again. Enter 256 in the **Width** field; enter 136 in the **Height** field; select **Pixels** as the unit. Click **OK** to exit the dialog box.

- e. Your image will be cropped to the 256 x 136 pixel size. If you cropped part of the image you wish to keep, you can undo (Ctrl + Z) and try again. You may have to experiment a bit to resize the image inside the 256 x 136 pixel limit.
5. After the image is sized, select **Black and white** in the **Attributes** dialog.
6. Save your image as type “Monochrome Bitmap (*.bmp,*.dib)” and confirm that the size is 5k or less.

Download a Graphic Logo to an ER-265

1. Install the *ER-265 PC Utility* on your PC.
2. At the ER-265, set the RS-232C option address #5 to a value of 1 (PC). (S position; 80 SBTL; 5 X/TIME; 1 CASH; CASH)
3. Return key lock to **REG** and sign on a clerk.
4. Connect the PC to the ER-265 using one of the following cables:
CCR Part # 522035 (Register DB-9M to PC DB-9F)
CCR Part # 522038 (Register DB-9M to PC DB-25F)
5. At your PC, start the ER-265 PC Utility. (Select **Start, Programs, SHC PC UTILITY, ER-265 PC UTILITY.**) The **Store Setting** dialog box displays.
6. If you are starting the ER-265 PC Utility for the first time, you must define a store name, or if a store is already defined, you can select the store from the drop down list. After the store is defined or selected, click **Close**. The PC Utility program starts.
7. Move the .bmp logos you wish to use into the store directory (i.e. C:/ER-265PC/storename.)
8. At the PC Utility, choose **Convert Logo Image** from the **Utility** menu. The Bmp dialog box displays.
9. Click **FILE OPEN**. Select the bitmap image you wish to use from the **Open** dialog and click the **Open** command button.
10. Click the **SAVE AS PRE IMG** button.



11. When the image is selected, click **OK**. Verify that the message “Save As UserPre.img” displays. If the file is too large, and cannot be loaded, the message “File Size Error” will display.
12. Choose **PreAmble Image** from the **DownProgram** menu.
13. The screen will track the progress of the download. When complete, the **COMM COMPLETED** message will display, click **OK**.

Printing the Logo Image – ER-265 Settings

You must set system option #29 “Pre Print Graphic Logo on Receipt” to **Yes**.

(In PGM mode, enter **29**, press **RA**, enter **1**, press **PO**. Press the **CASH/TEND** key to exit the program.)

Appendix

Cabling Diagrams

You can configure cables yourself with the diagram provided here, or you can order the appropriate cables from CCR Parts at +27 11 836 9512.

Direct Connection

Sam4s DB-9M	PC DB-9F
DCD1	1DCD
RXD2	2RXD
TXD3	3TXD
DTR4	4DTR
GND5	5GND
DSR6	6DSR
RTS7	7RTS
CTS8	8CTS
VCC9	9RI