

Simple Installation for POS system use

Instruction for Angle Adjustment

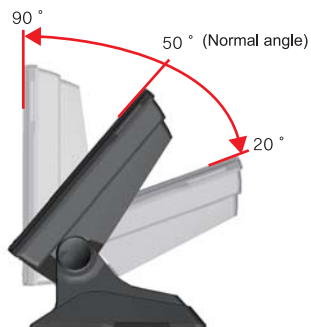


Table Height & Screen Angle should be altered for User Environment.

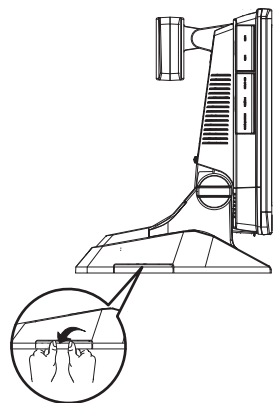
Instruction for Opening Cover Cable



POS system display angle should be adjusted as shown in the picture.

- 1 Cover Screw (2 of them, (a)) would be removed.
- 2 Fix point ((b)) should be pressed and Cover can be separated.
- 3 All desired Cables can then be connected.
- 4 Tidy up Cables and Cover can be replaced.
- 5 Cover Screw would finally be replaced and tightened for safe use of POS system.

Instruction for Removing Cable Dummy



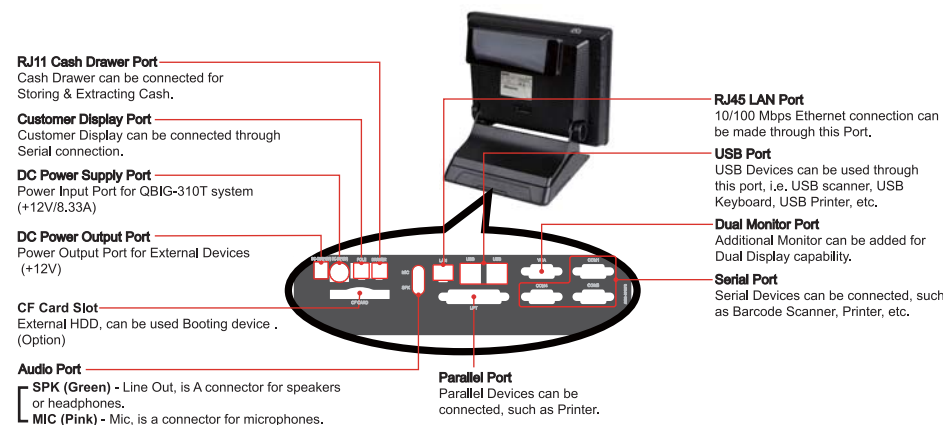
Depending upon user environment, Stand Cable Dummy can be removed and Cables can be put in neat order. Locations of Dummy are Right, Left & Rear of POS system and it can be removed where desired.

⚠ When removing Dummy, Please be extra careful in case of a cut due to sharp section.

- 1 Remove Dummy from the stand, referring to the enlarged picture as shown in the left hand side.



Name and Function of each part



Front Side



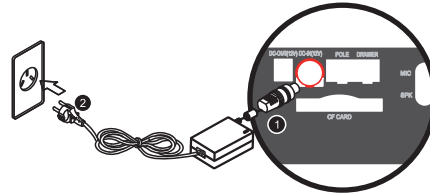
Reverse Side



Simple Installation for POS system use

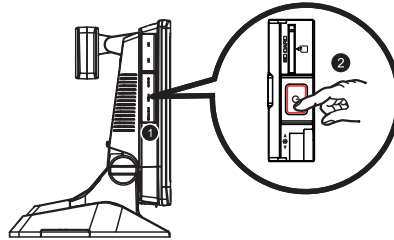
Adapter connection

- 1 Connect a cable to back side of POS system.
- 2 Connect a cable to power outlet.



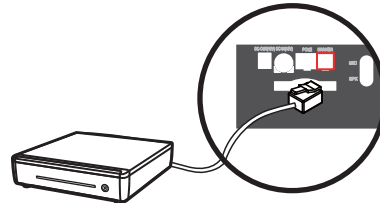
POS system operation

- 1 Open the cover as shown.
- 2 Power on as shown in the picture.



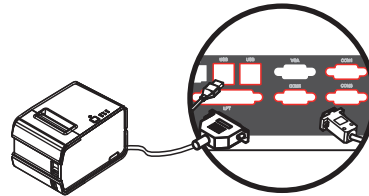
Connection of Drawer (Option)

- ⚠ Use RJ-11 port when Cash Drawer is desired & used (Use SAM4S Cash Drawer).
Option Module must be installed to use the Drawer.



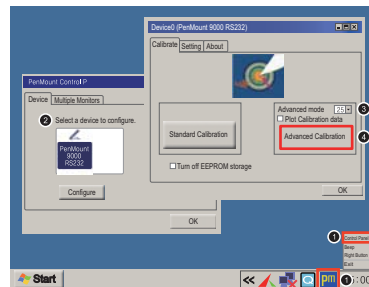
Connection of Printer

- ⚠ Please, connect cables & devices after POS system power off.
- 1 Connect a printer cable to POS system port.
 - 2 Power on printer after printer's power cable connection.
 - 3 Power on POS system.



Installation of touch monitor

- ⓘ Please, adjust coordinates (value) as following steps in case of error or distortion occurs on the touch monitor.
- 1 Open the "PenMount Control Panel" clicking PM icon on the Tray icon bar.
 - 2 Double click a button of desired device on "PenMount Control Panel".
 - 3 Select 25 of list box in advanced mode.
 - 4 Click "Advanced Calibration" button.
 - 5 Adjust the touch monitor settings by following the screen instruction.



A Guide for safe POS system use

ⓘ Please, read carefully electronic manual and this sheet before using POS system.

Caution when system installation

- 1 Use POS system within a right voltage range.
- 2 Connect power cable to a grounded plug.
- 3 Set up power, modem, LAN cable in safe place not passageway. When cables/Devices set up in a passageway, Electric shock/Fire/system error/disturbance of passing could be happened.
- 4 Installation is necessary in a place without any electronic waves.
- 5 Installation is necessary in a place with clean & not wet.
- 6 Do not put magnetic material near System or a monitor. If not, there will be certain error or damage occurred. For example, Monitor could become stained or decrease durability of product.
- 7 Installation is necessary without direct sunlight.
- 8 Please install a system in well ventilated and open area.
- 9 Do not install a system in hot places, possibly with heaters, etc. System can be deformed and the fire or electric shock can be experienced due to naked cables.
- 10 Carry out an installation in a stable place in case of POS system drop occurs.

Caution about power

- 1 Connect power plug carefully & correctly. Also when disconnecting, the plug should be gripped rather than the cable. The fire or electric shock can be experienced due to broken or naked cables.
- 2 Please use ground multi-outlet not using multi-connecting other electric products or heating device. Many uses of electric products on a multi-socket can make certain fire by over-heating.
- 3 Do not touch power plug with wet hands. Also, use power plug after cleaning a plug in case of wet or dust remains. There would be an electric shock.
- 4 Do not disconnect the power plug while the system is on. An electric shock can be experienced.
- 5 Do not assemble/disassemble the power supply unit and in case of a malfunction, the user must consult an expert.
- 6 Remove modem cable and power cable of system when thunder-storm or lightening occurs.
- 7 Remove the power plug if the system is not used for long. Piled dust could cause fire and insulation deterioration could result a electric leak, shock or fire.
- 8 Do not enter iron-chopsticks or a conducting material to the other power socket in case of an electric shock. Also, Do not touch right away soon after removing the power plug, there may be an electric shock by a remained electricity.
- 9 Please shut down the main POS system first, then turn off other peripherals.

Memo