

Touch Driver Install Manual

SPT-4700

(Version 1.1)

www.sam4s.com

Revision A (Mar. 21, 2014)



Contents

* Touch Driver Install Procedure 3

* Calibration of Touch Screen 9

* Using mouse right click function..... 17

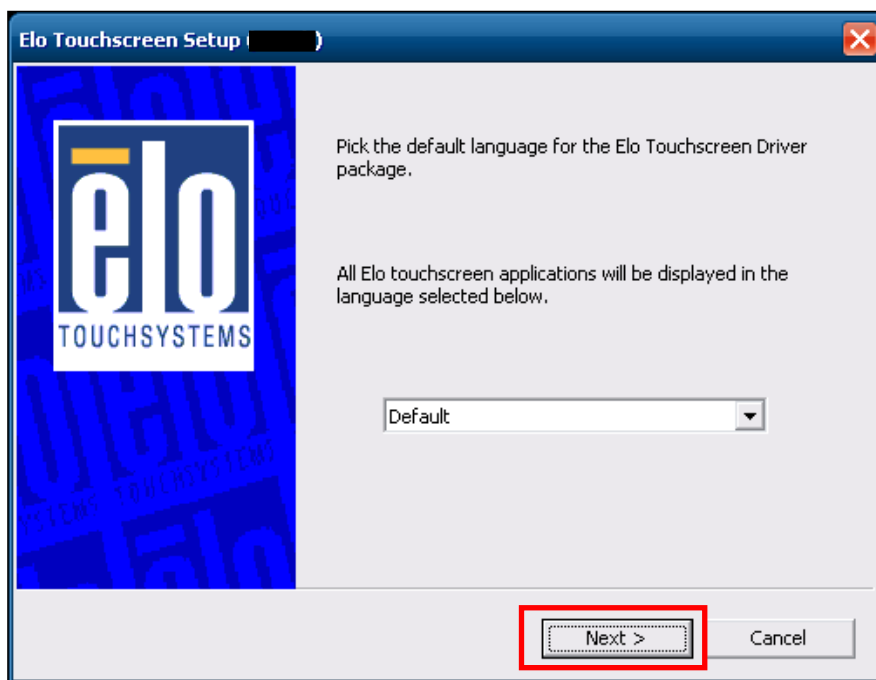
* Touch Driver Install Procedure

- 1) Run '**SWxxxxxx_TETouch_x.x.x.exe**' file.

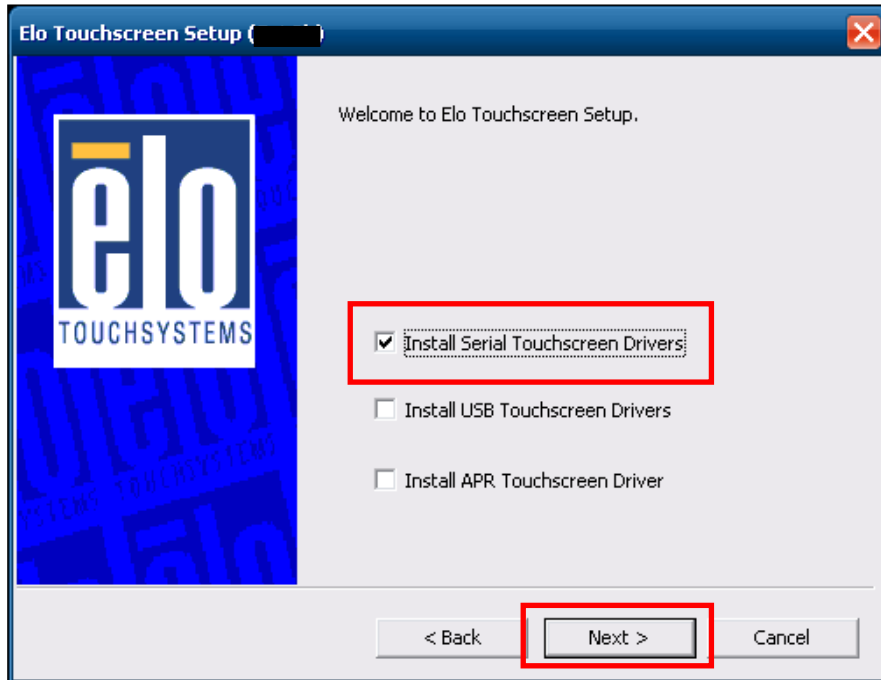
(※ The file version of touch driver can change without notice.)



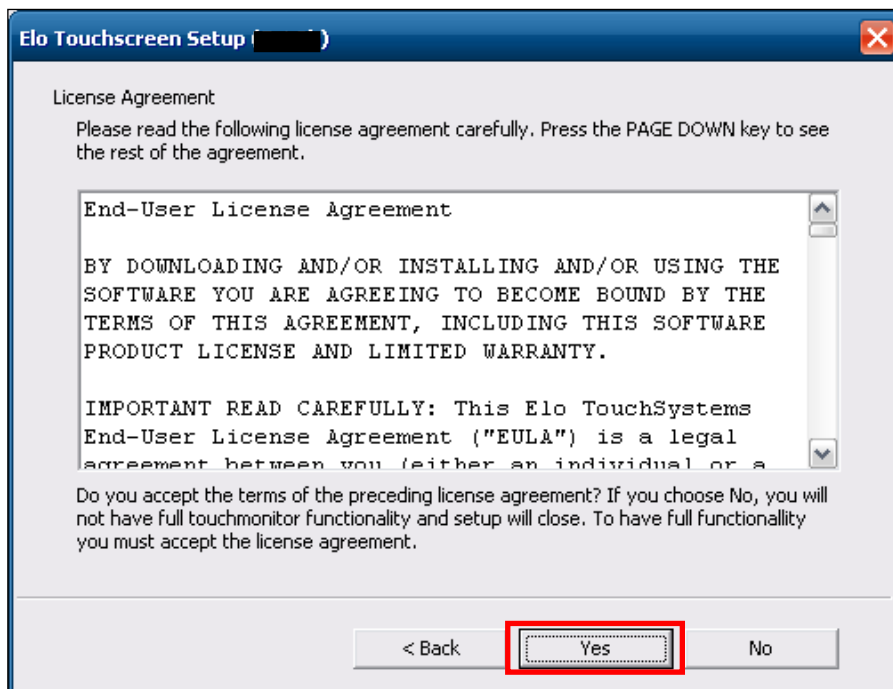
- 2) Click '**Next**' button.



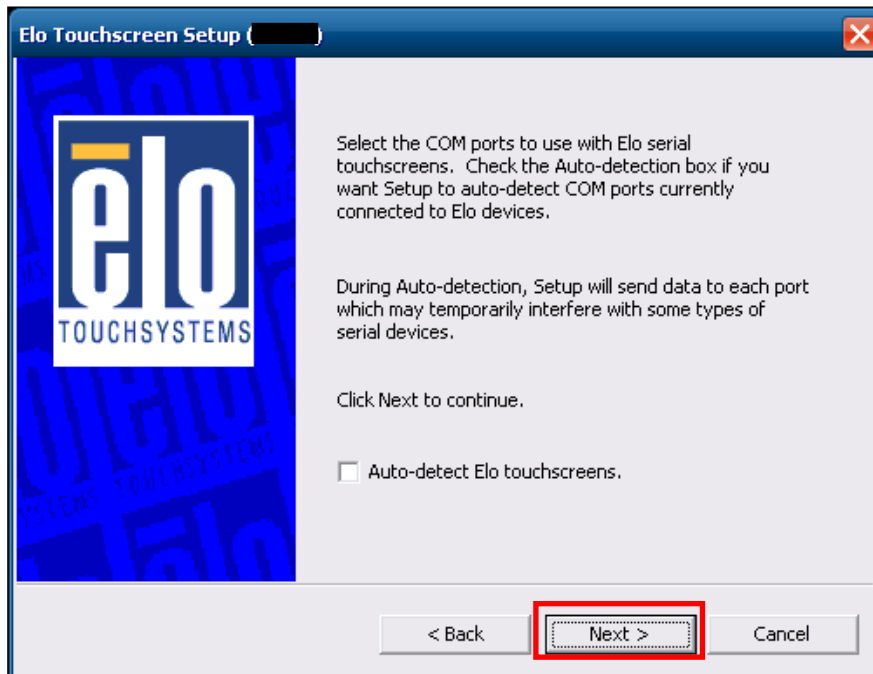
- 3) Check the '**Install Serial Touchscreen Drivers**' box. And click '**Next**' button.



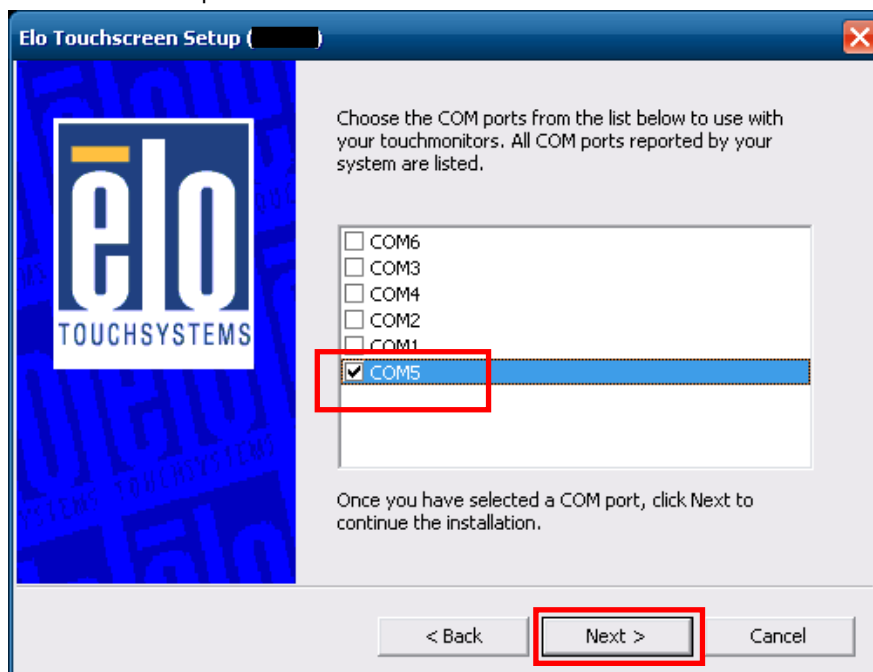
- 4) Agree with license agreement. Click '**Yes**' button.



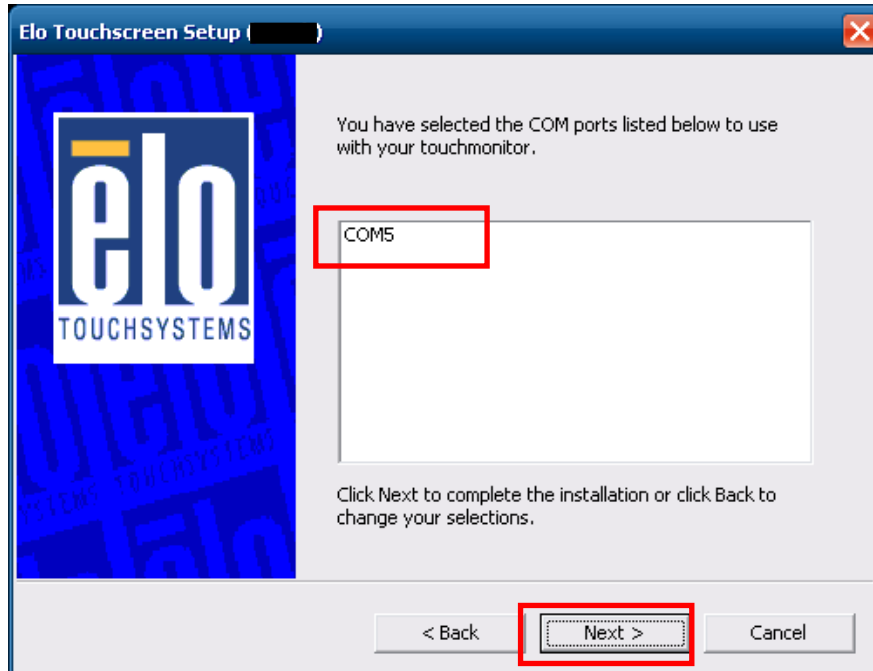
- 5) Click '**Next**' button.



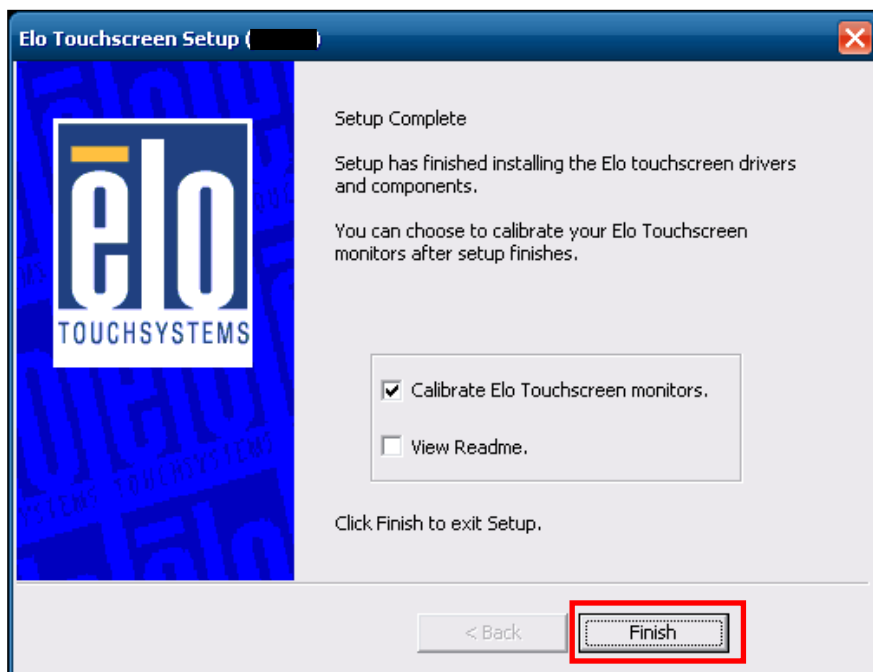
- 6) Check the serial port '**COM5**' for touch screen. Click '**Next**' button.



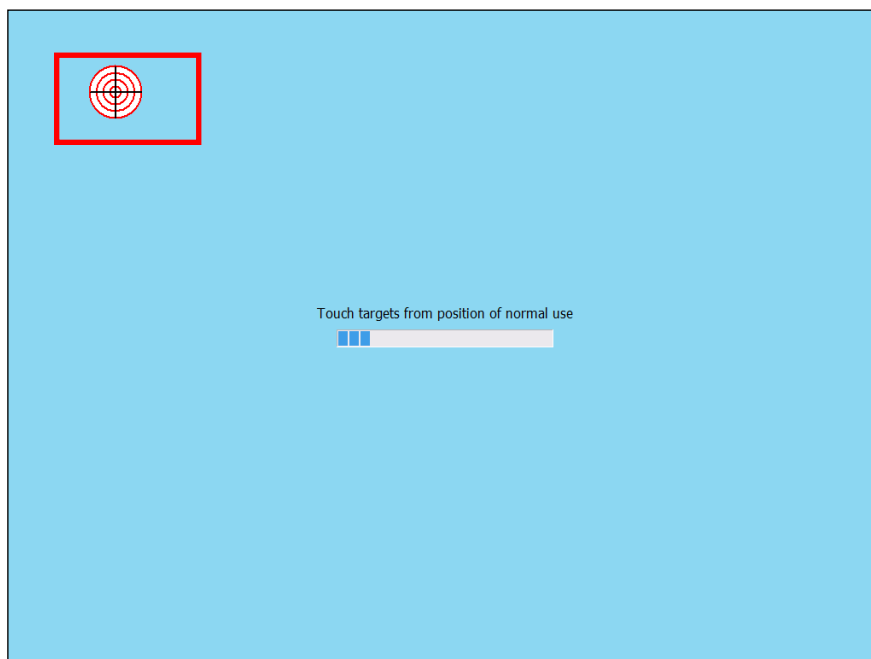
- 7) Confirm the serial port is 'COM5'. And click '**Next**' button.



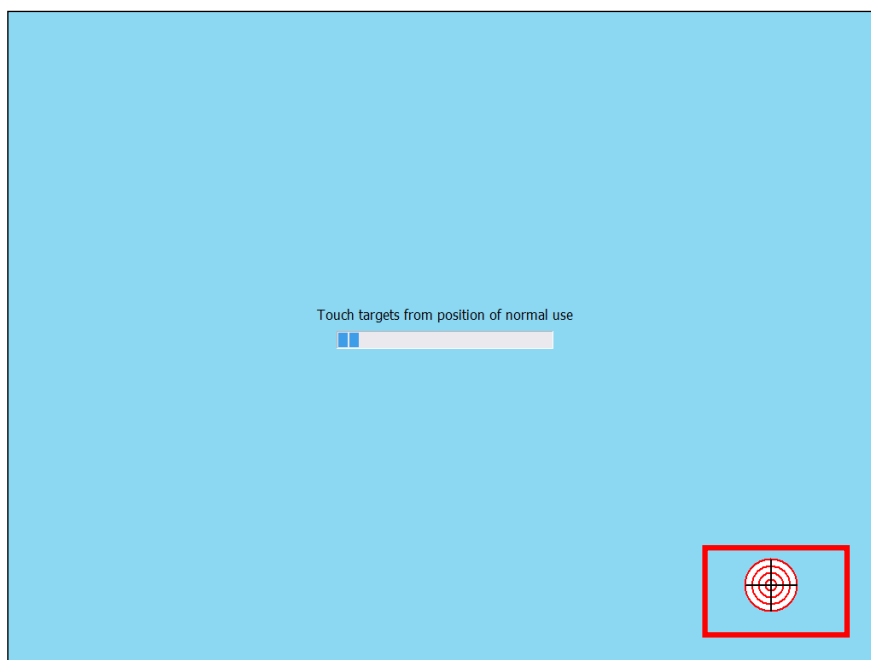
- 8) If the setup is completed, click '**Finish**' button.



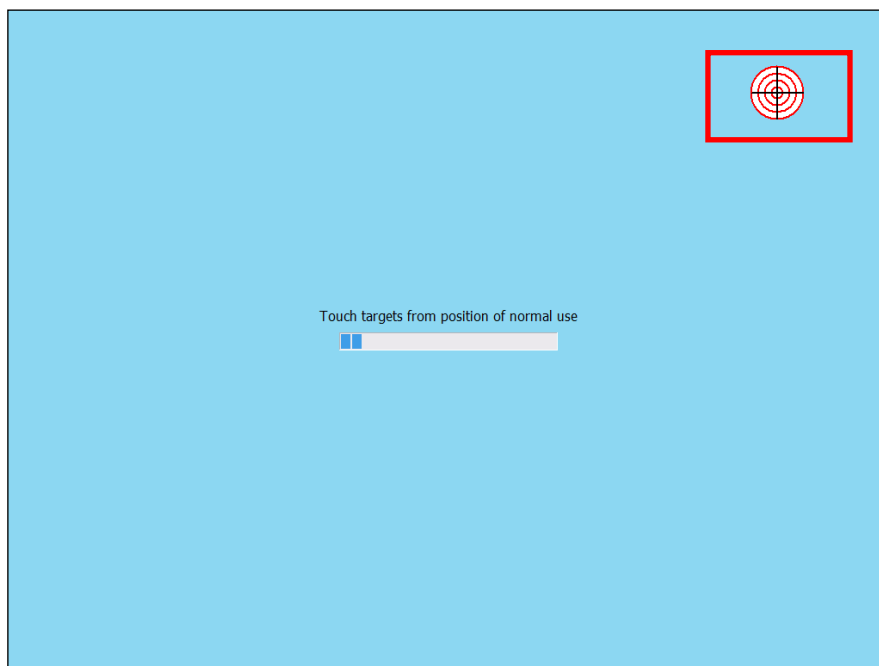
- 9) Calibration procedure will be started. Press the center of red circle during 2 seconds.



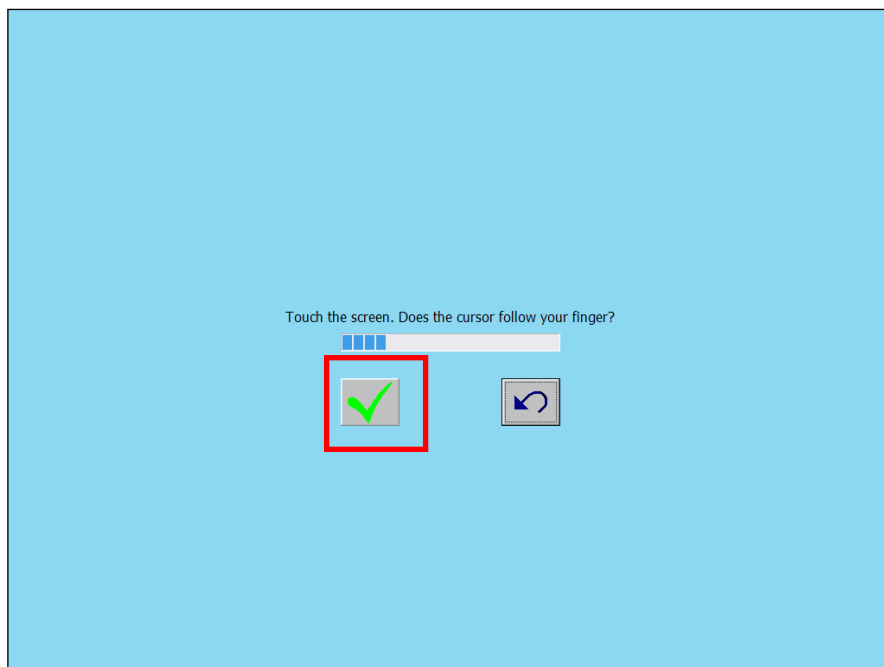
- 10) When the red circle appears in other area, press the center of red circle during 2 seconds.



- 11) When the red circle appears in other area, press the center of red circle during 2 seconds.

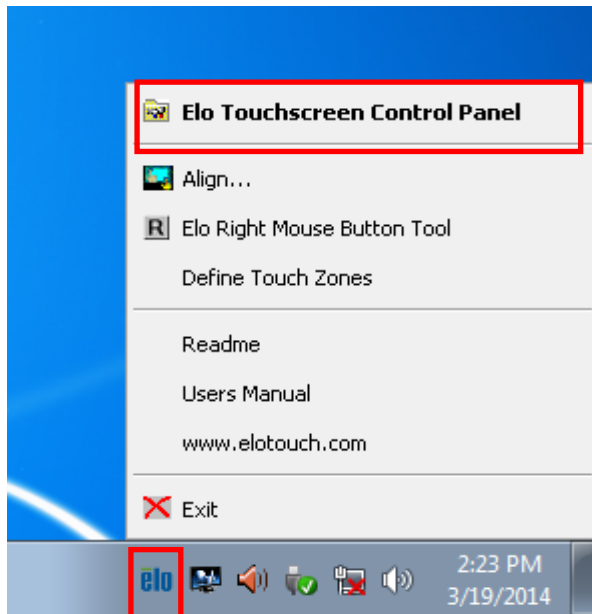


- 12) Click the green box to finish the calibration procedure.

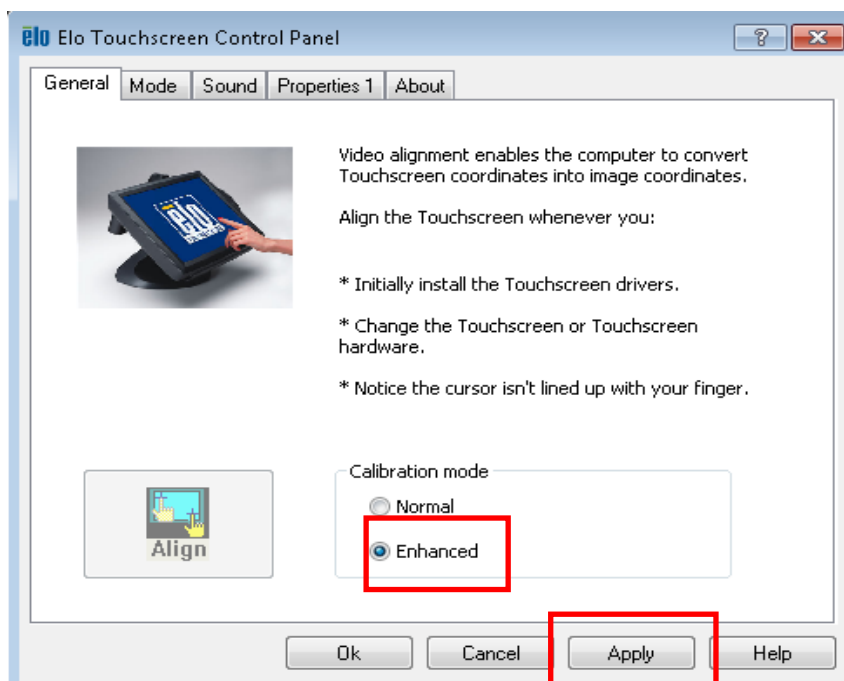


* Calibration of Touch Screen

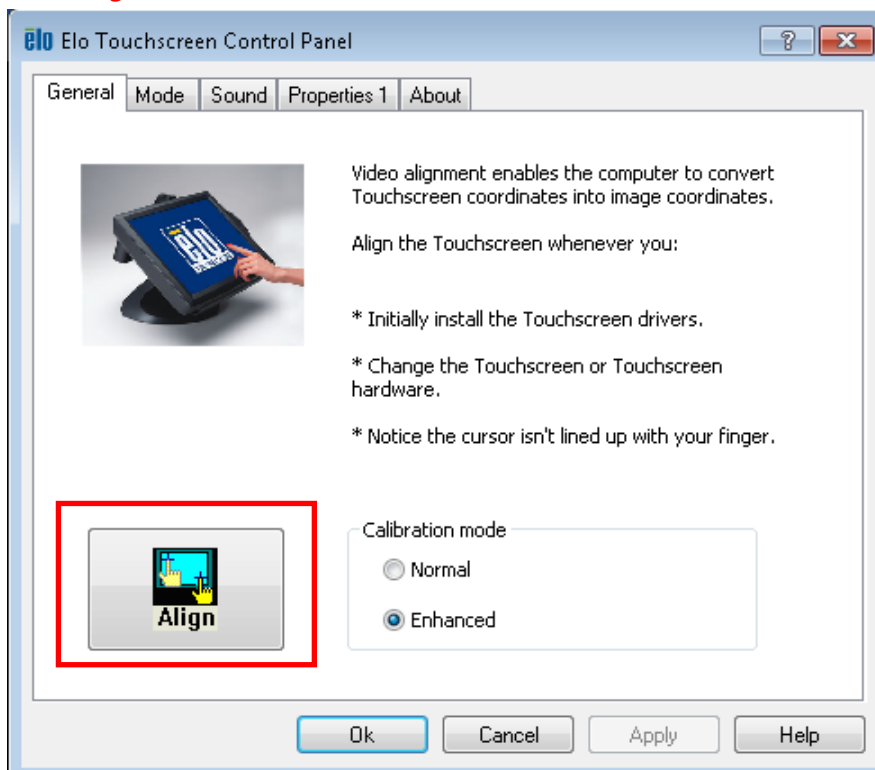
- 1) Click the '**elo icon**' on tray area in Windows. And select '**Elo Touchscreen Control Panel...**' menu.



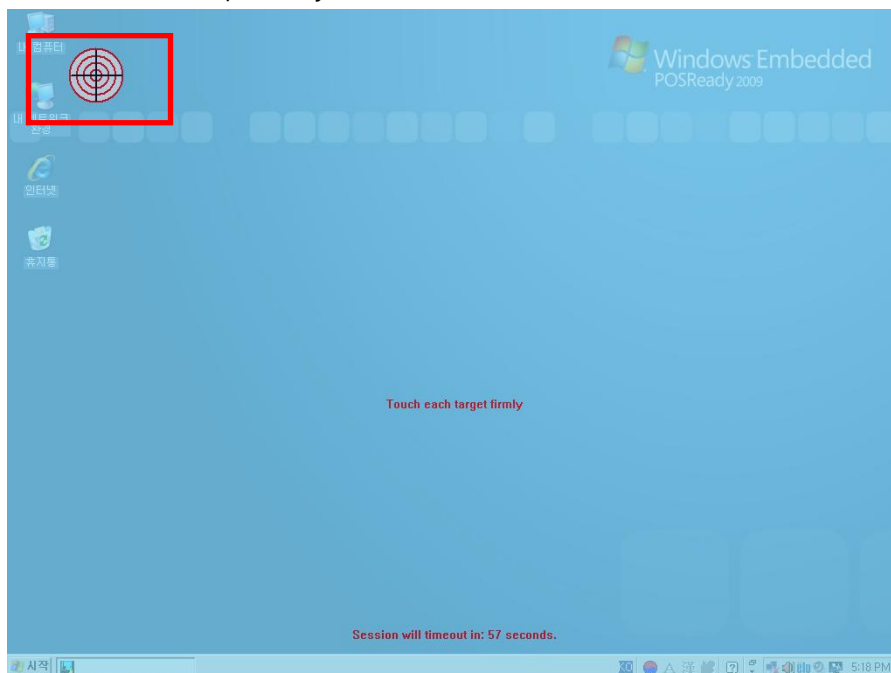
- 2) Select the '**Enhanced**' of '**Calibration mode**'. Press the '**OK**' Click.

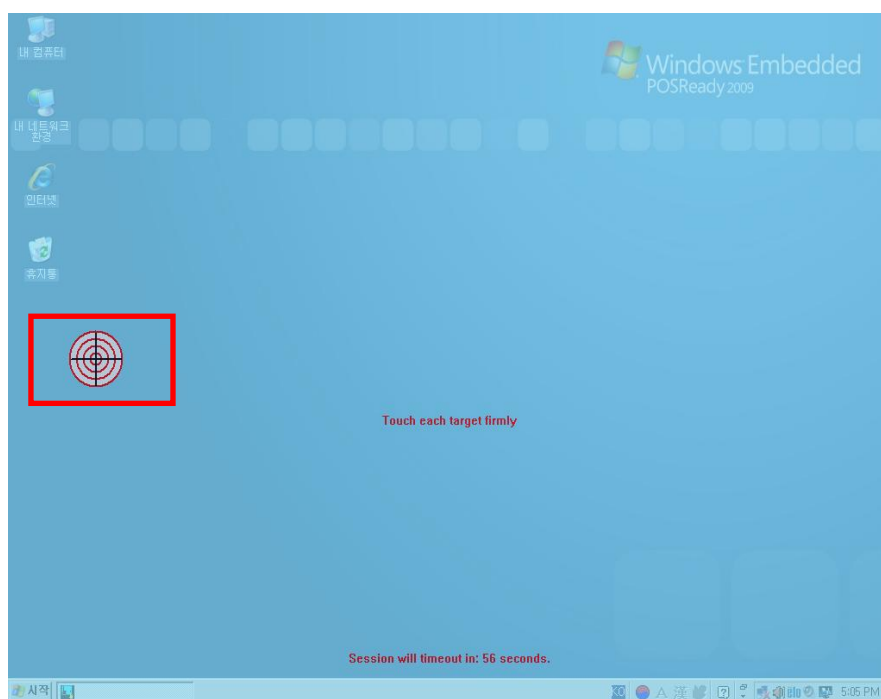
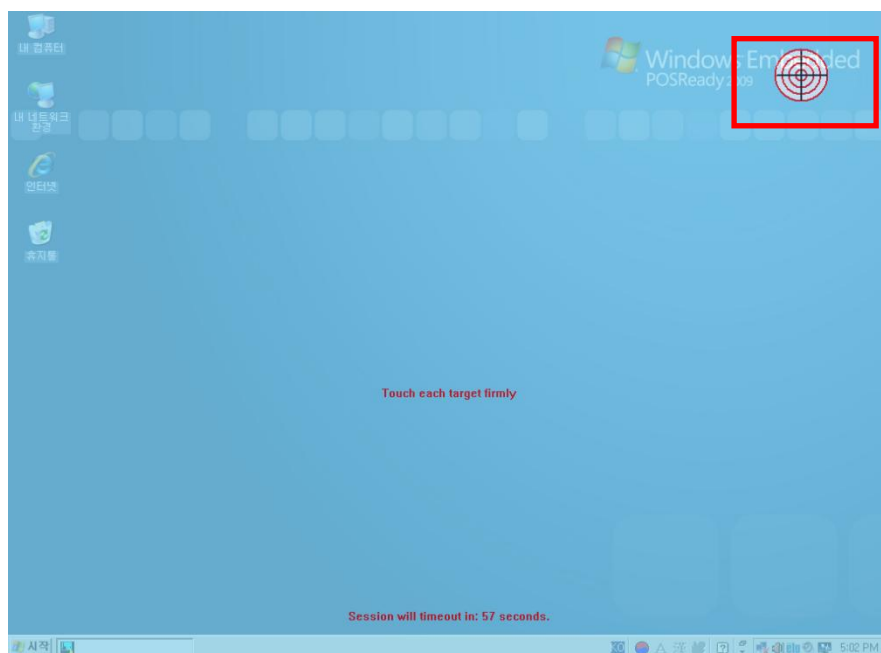


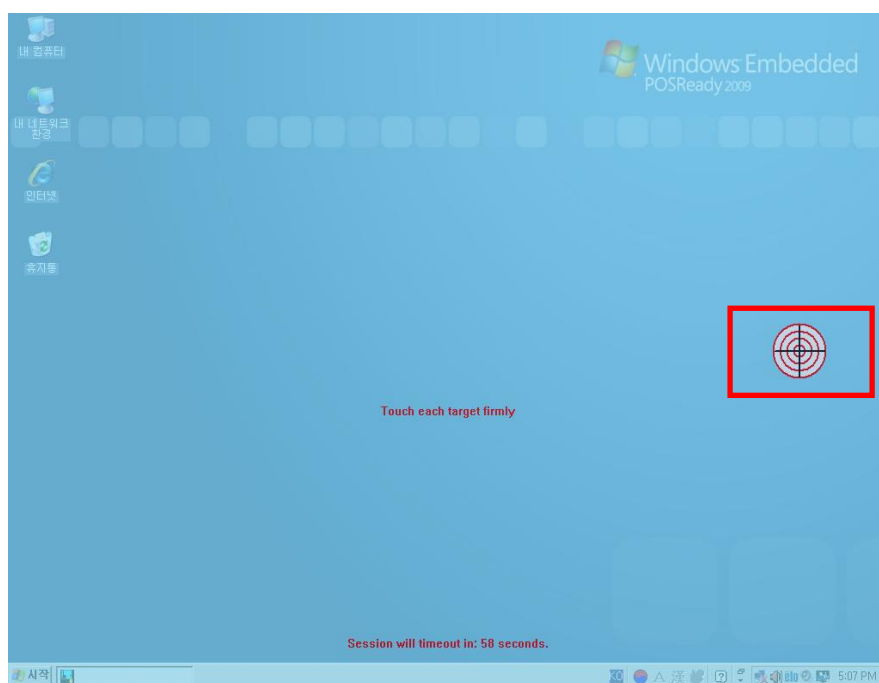
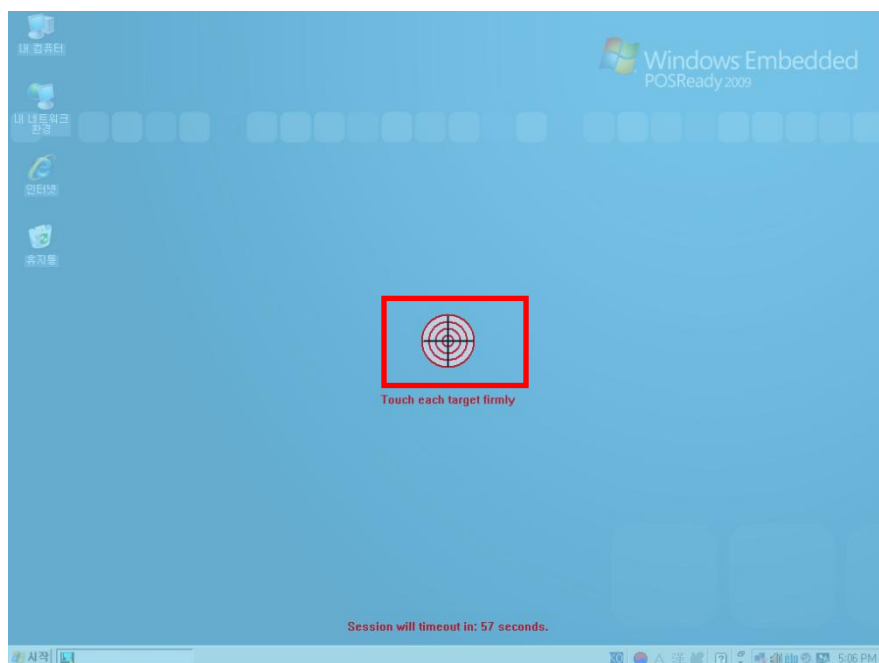
- 3) Click '**Align**' button to set an Enhanced Calibration.

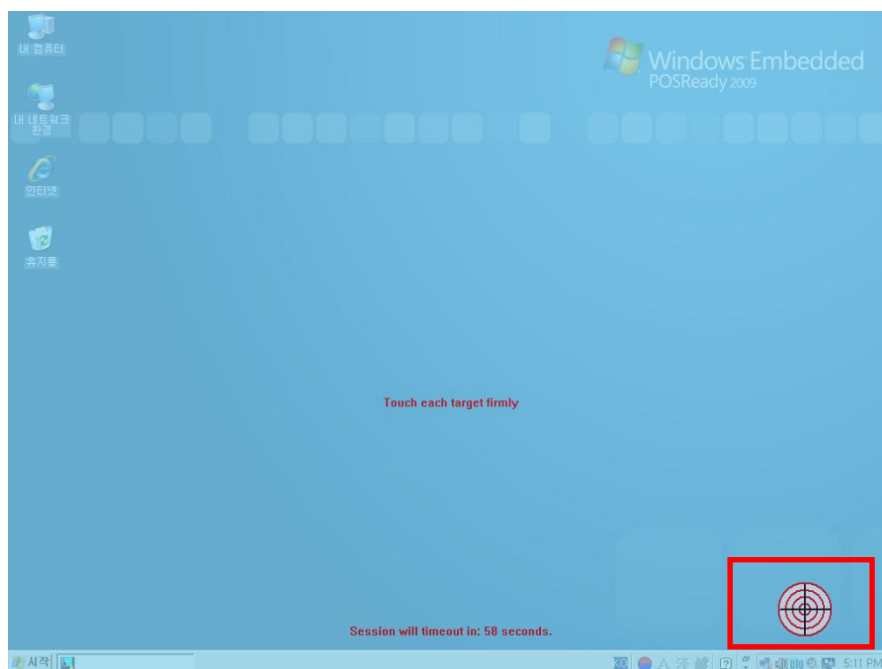
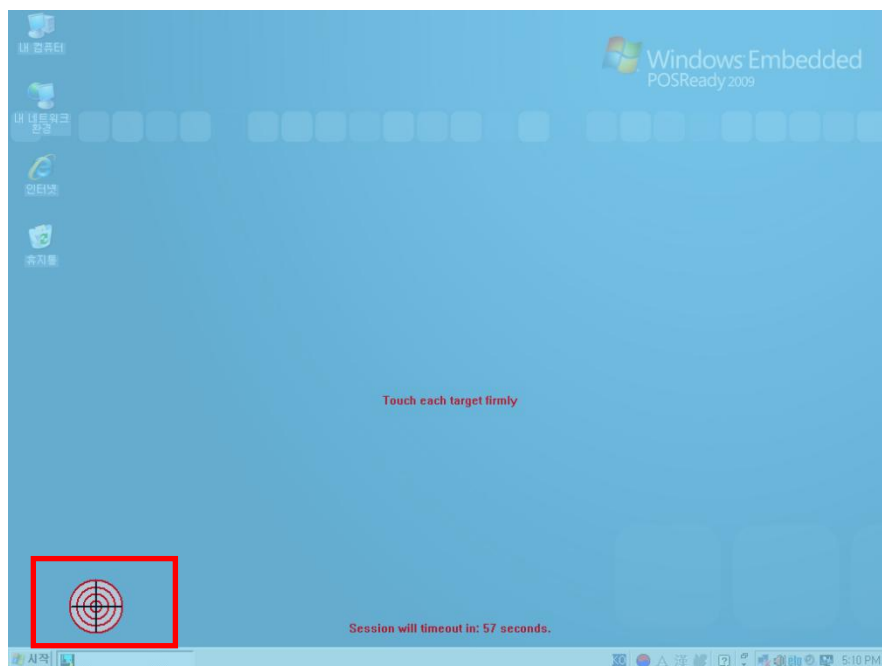


- 4) Calibration procedure will be started. Press the center of red circle during 2 seconds.
(You will do this repeatedly, 25 times)

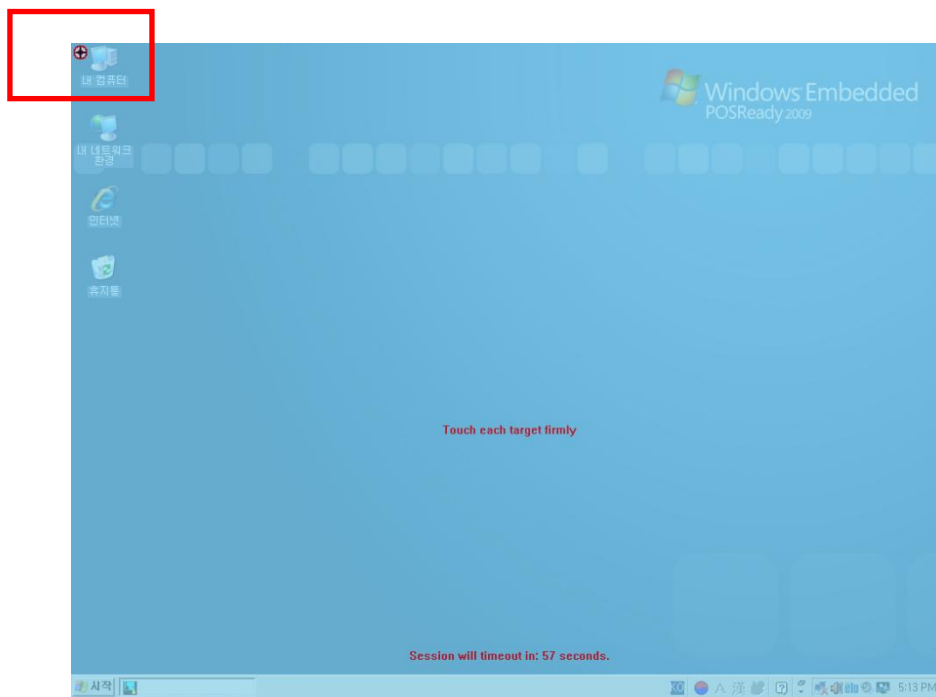
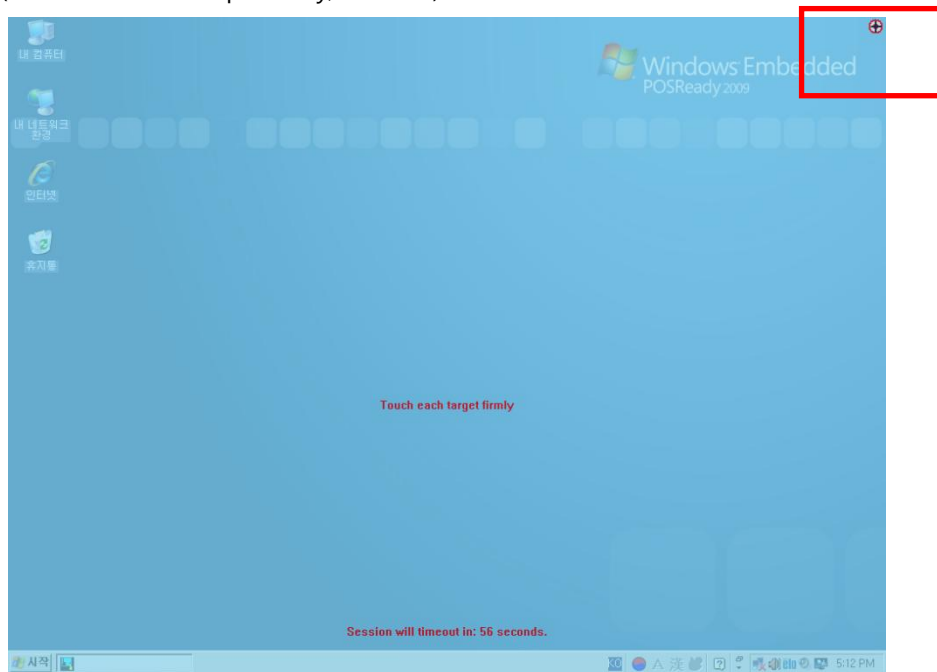


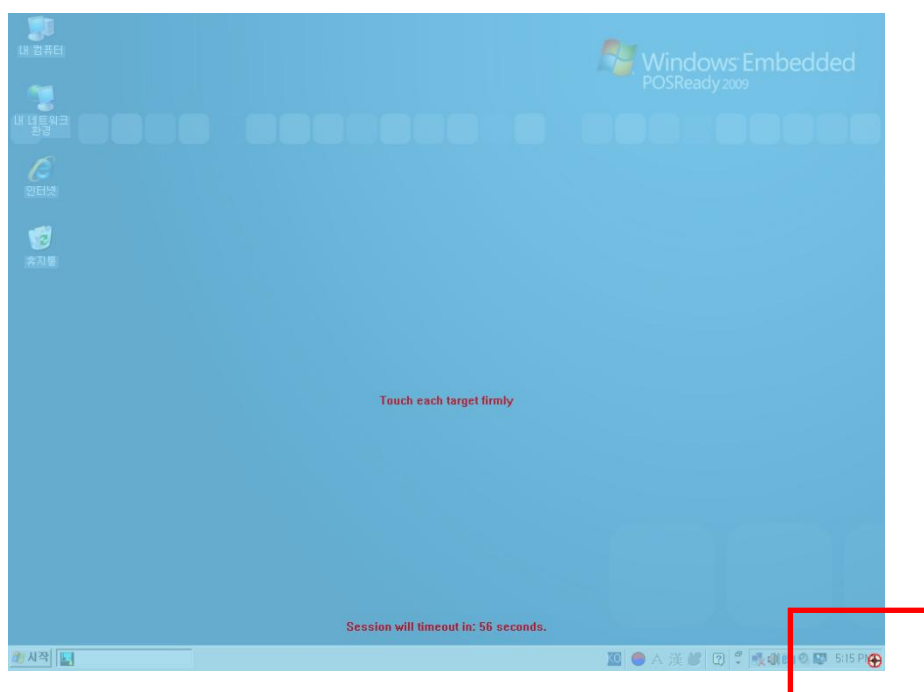
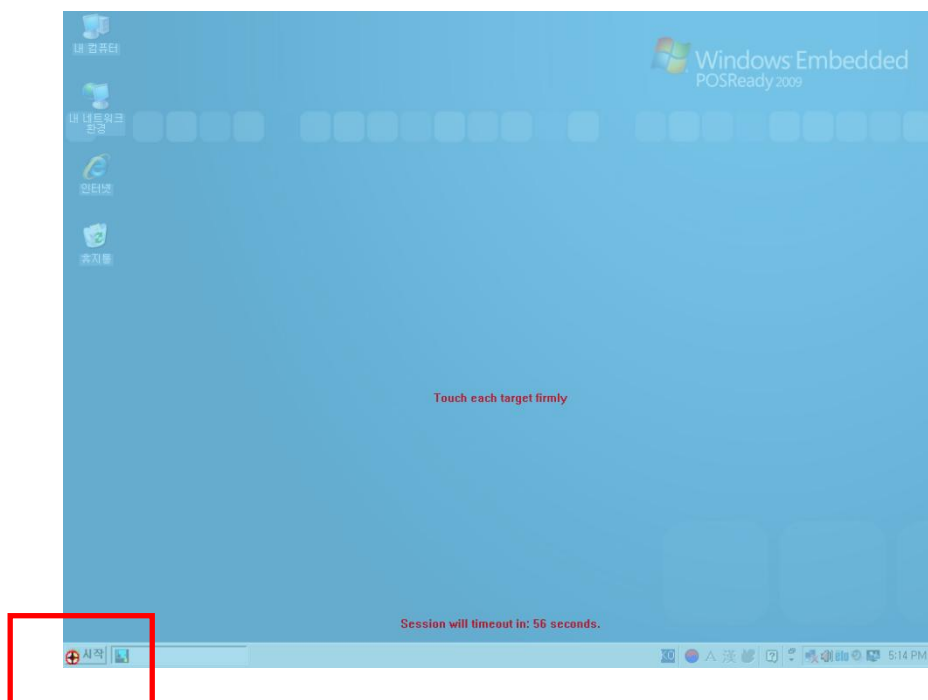




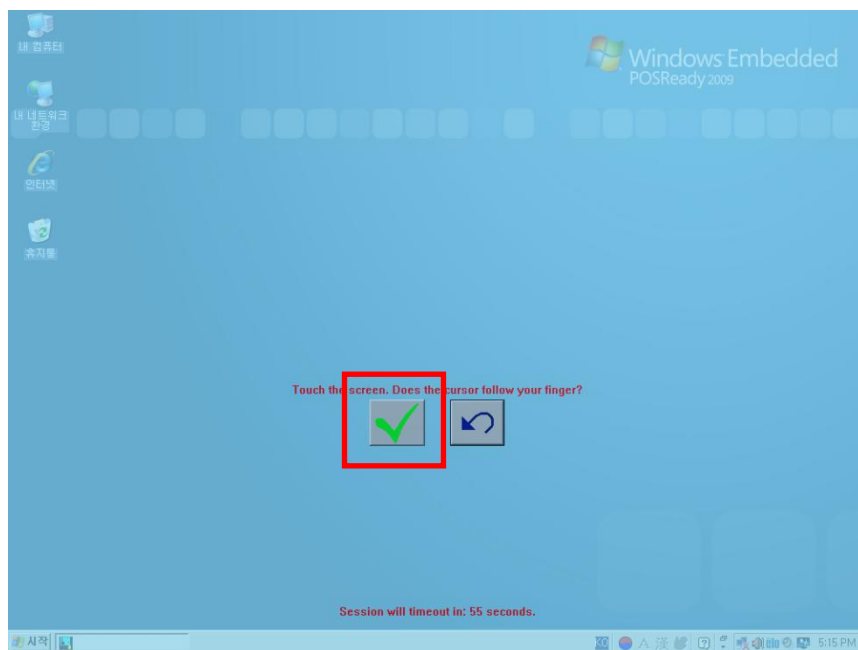


- 5) When the small red circle appears in other area, press the center of red circle.
(You will do this repeatedly, 4 times)





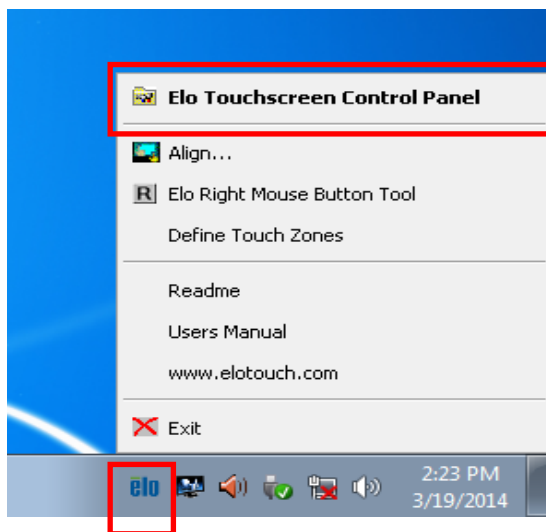
- 6) Click the green box to finish the calibration procedure.



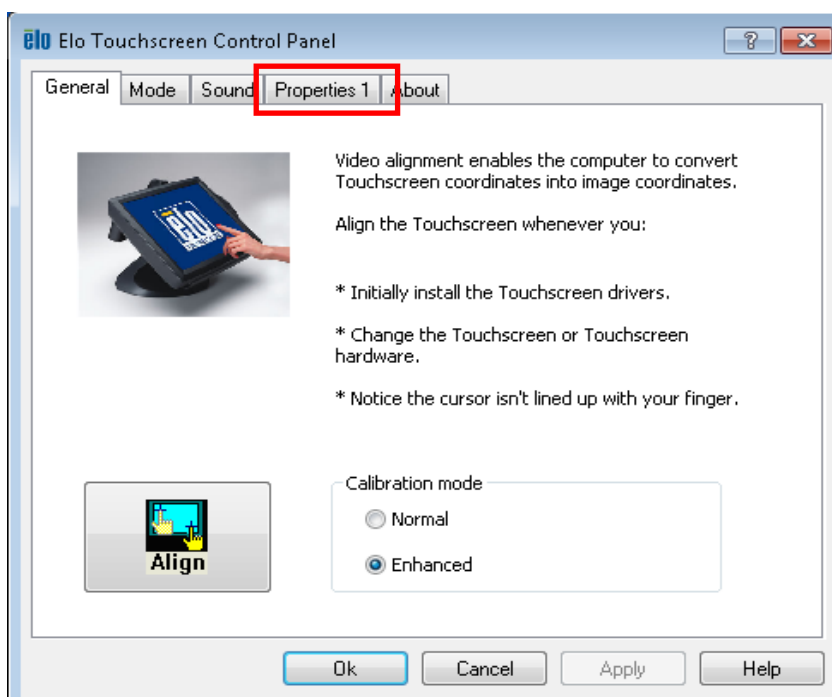
* Using mouse right click function

If you press the same point on desktop more than 2 seconds, the pop-up will be displayed. It is similar function with right-click of mouse. Refer to below steps to select "using mouse right-click function".

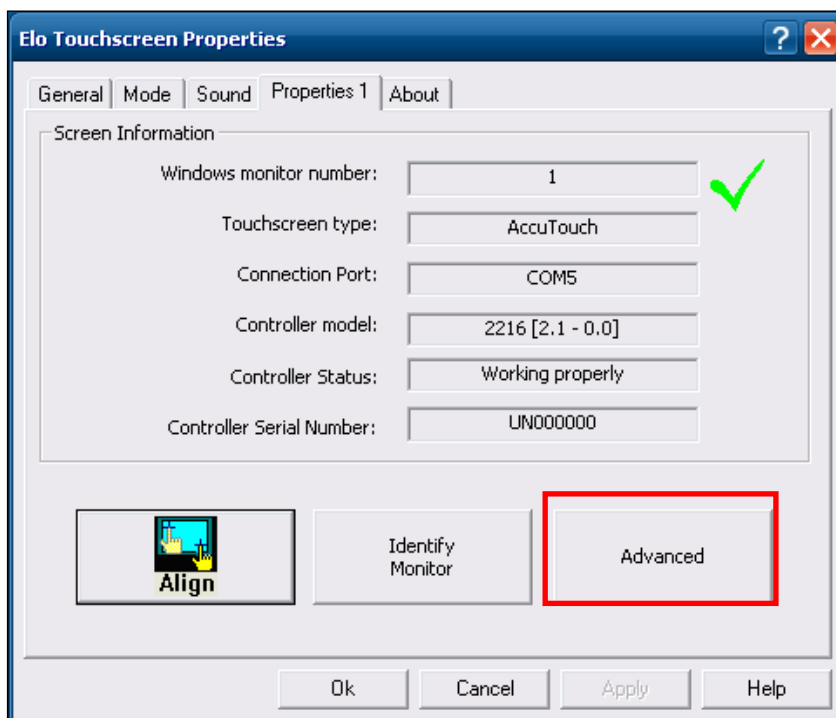
- 1) Click the '**elo icon**' on tray area in Windows. And select '**Elo Touchscreen Properties**' on the menu.



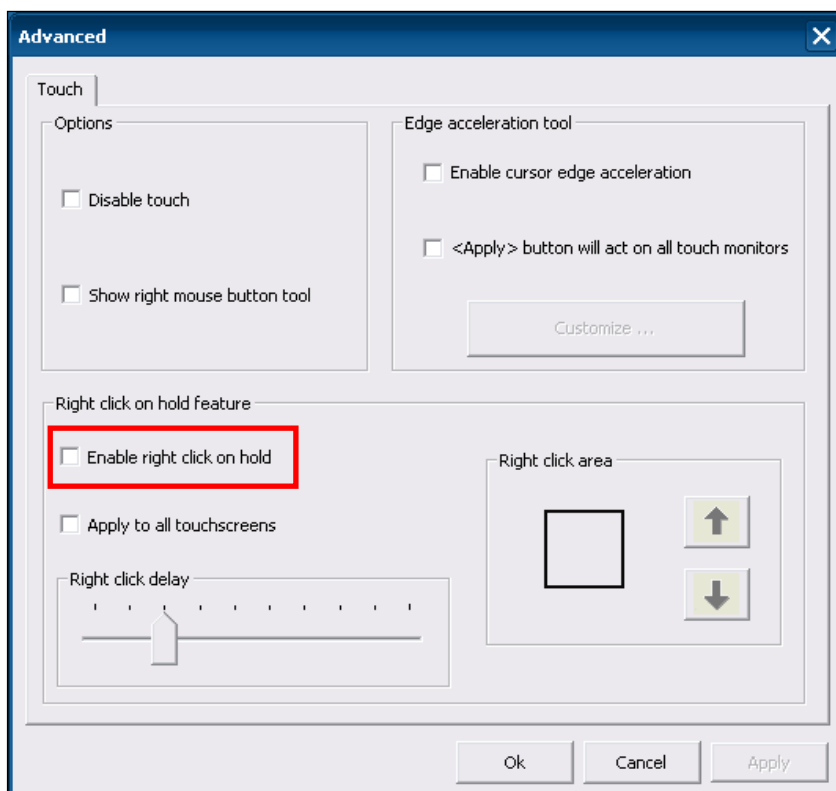
- 2) Select '**Properties 1**' tab.



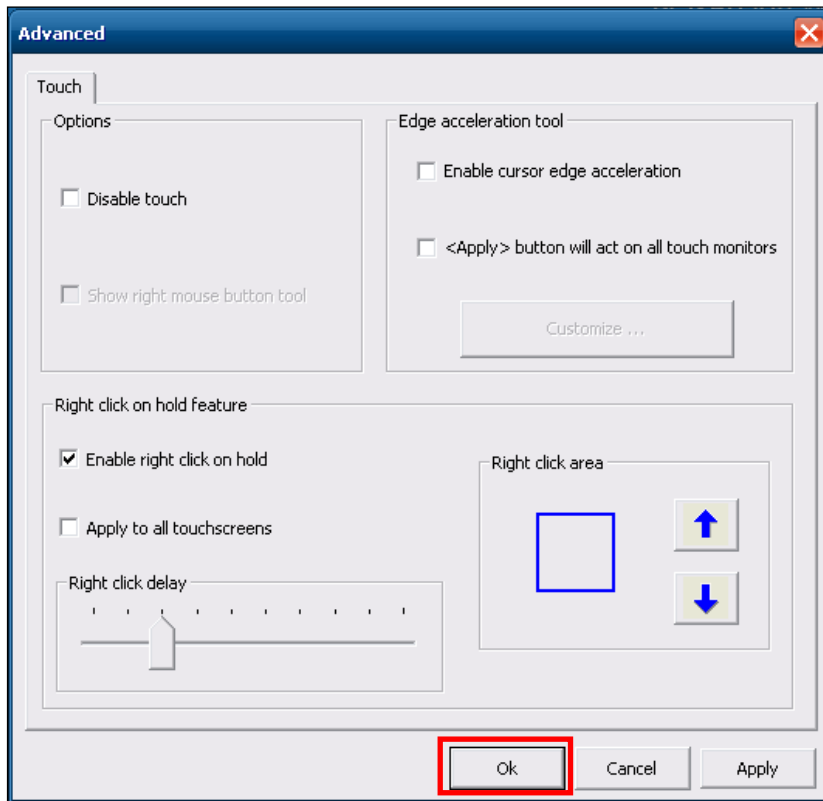
- 3) Click '**Advanced**' button.



- 4) Check the '**Enable right click on hold**' box.



- 5) Save the current change to click '**OK**' button.



- 6) Finish the dialog to click '**OK**' button.

