

Touch Driver Install Manual

SPT-7000

(Version 1.0)

www.sam4s.com

Revision A (May 2, 2012)



Contents

* Touch Driver Install Procedure..... 3

* Calibration of Touch Screen 9

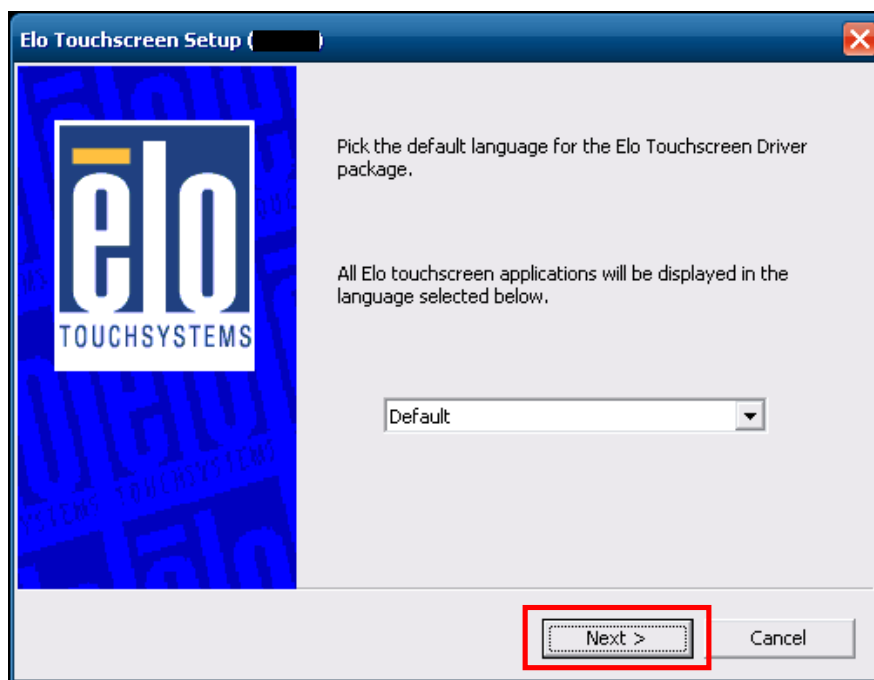
* Select mouse right click function 12

* Touch Driver Install Procedure

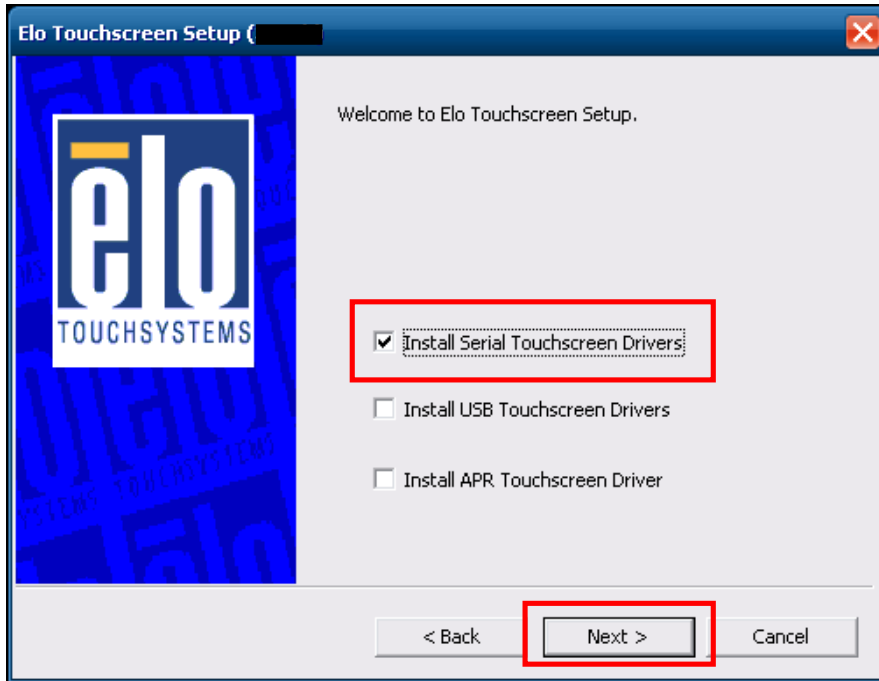
- 1) Run '**SWxxxxxx_TETouch_x.x.x.exe**' file.
(※ The file version of touch driver can change without notice.)



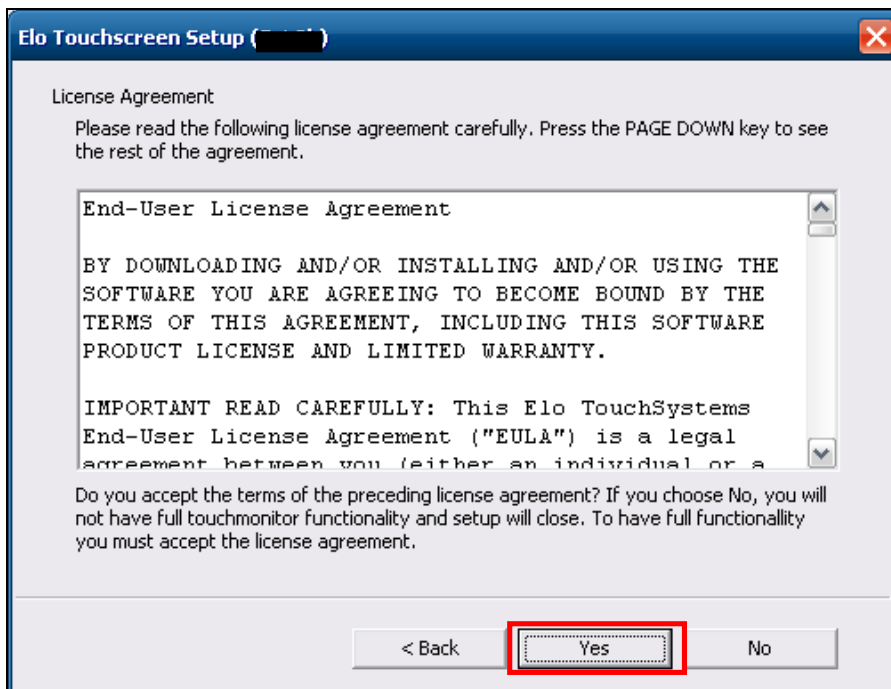
- 2) Click '**Next**' button.



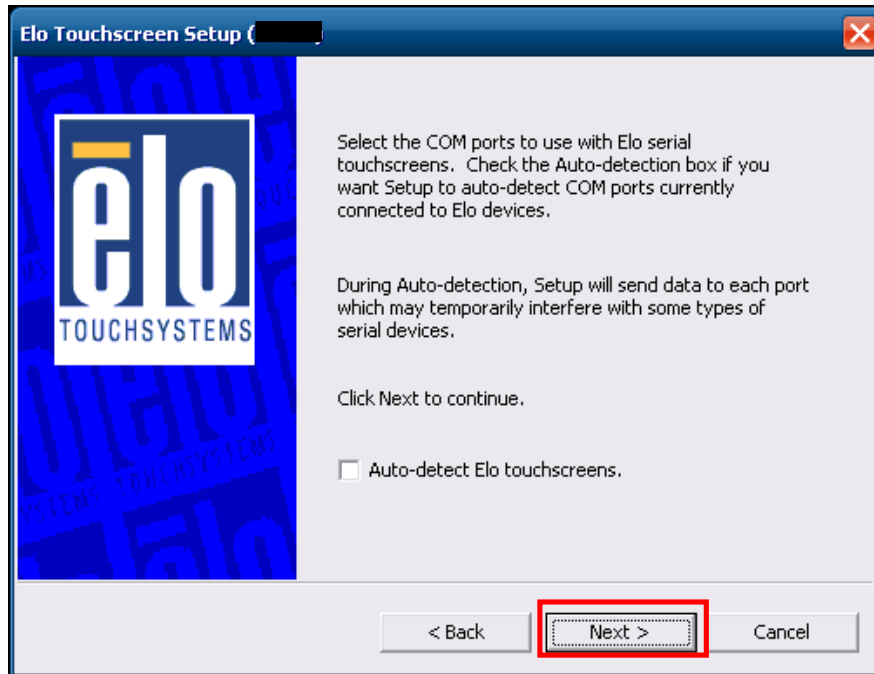
- 3) Check the '**Install Serial Touchscreen Drivers**' box. And click '**Next**' button.



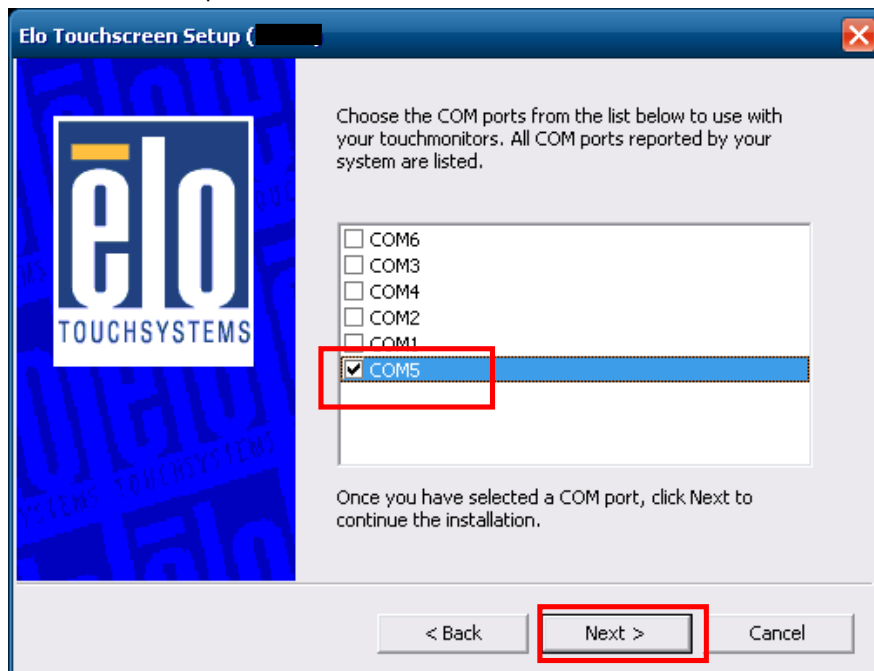
- 4) Agree with license agreement. Click '**Yes**' button.



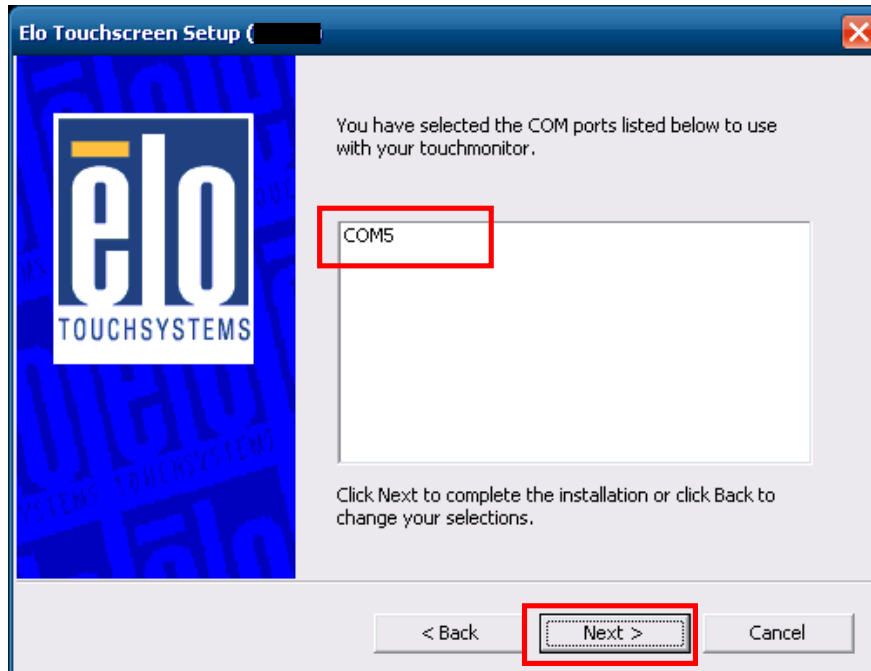
- 5) Click '**Next**' button.



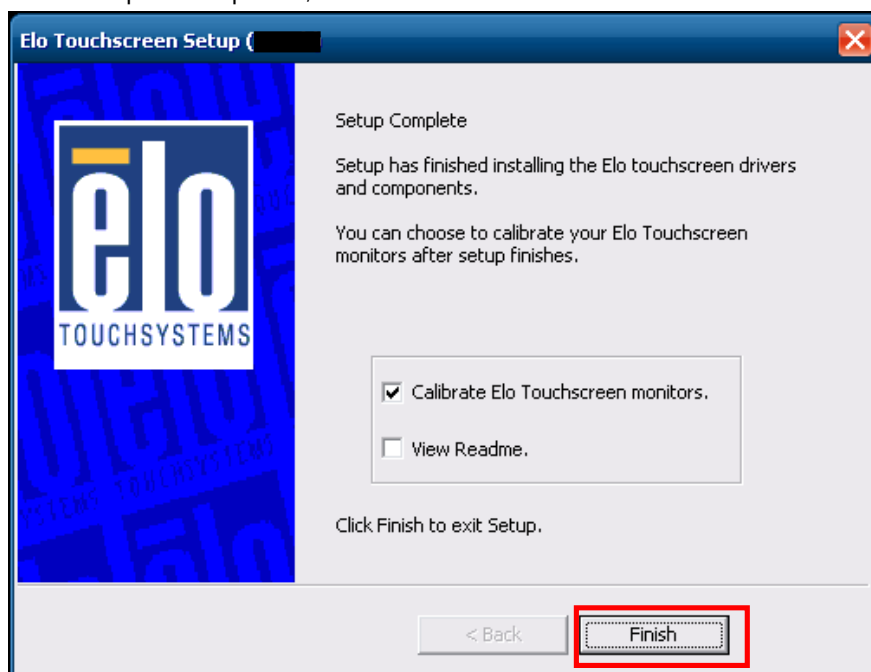
- 6) Check the serial port '**COM5**' for touch screen. Click '**Next**' button.



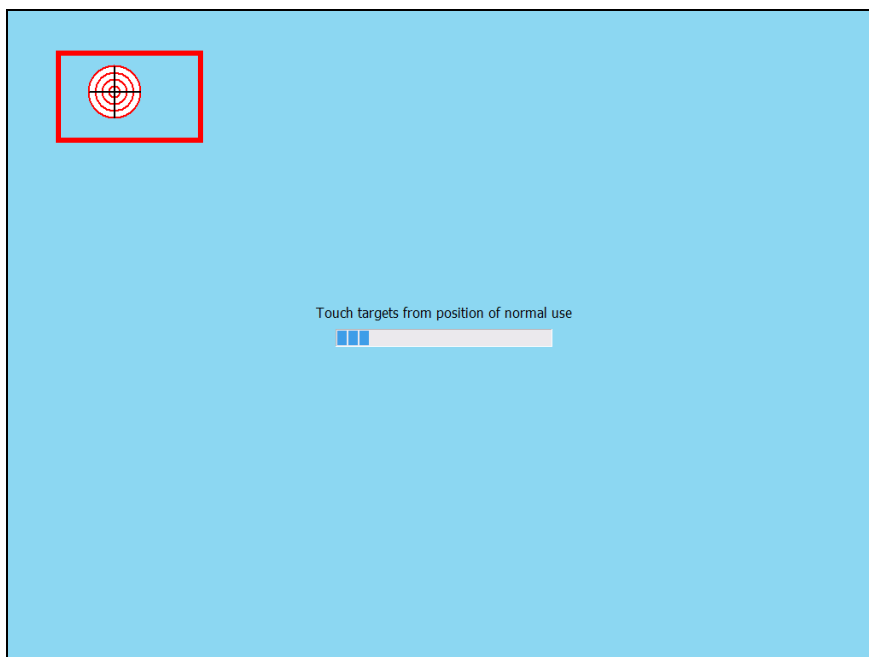
- 7) Confirm the serial port is 'COM5'. And click '**Next**' button.



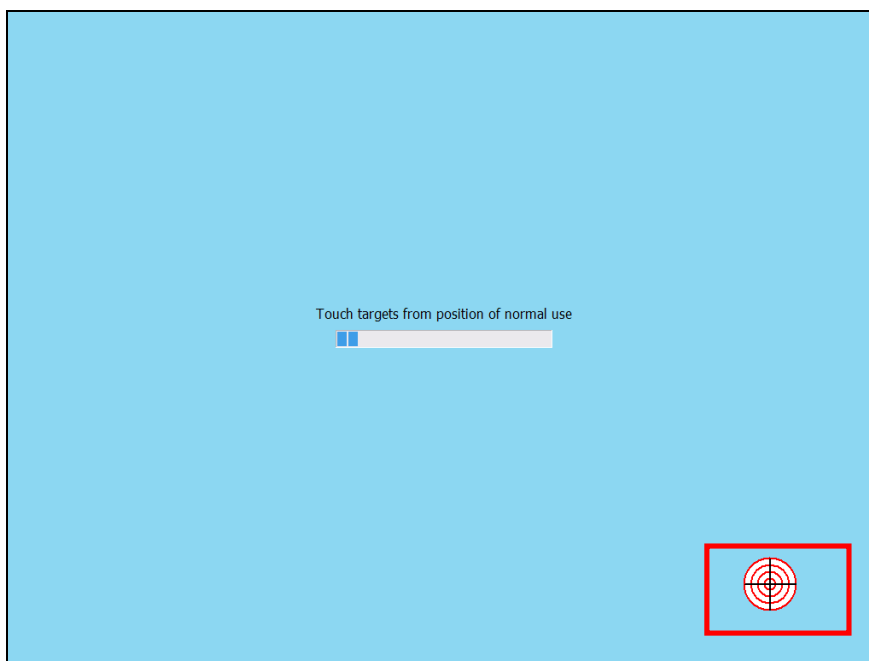
- 8) If the setup is completed, click '**Finish**' button.



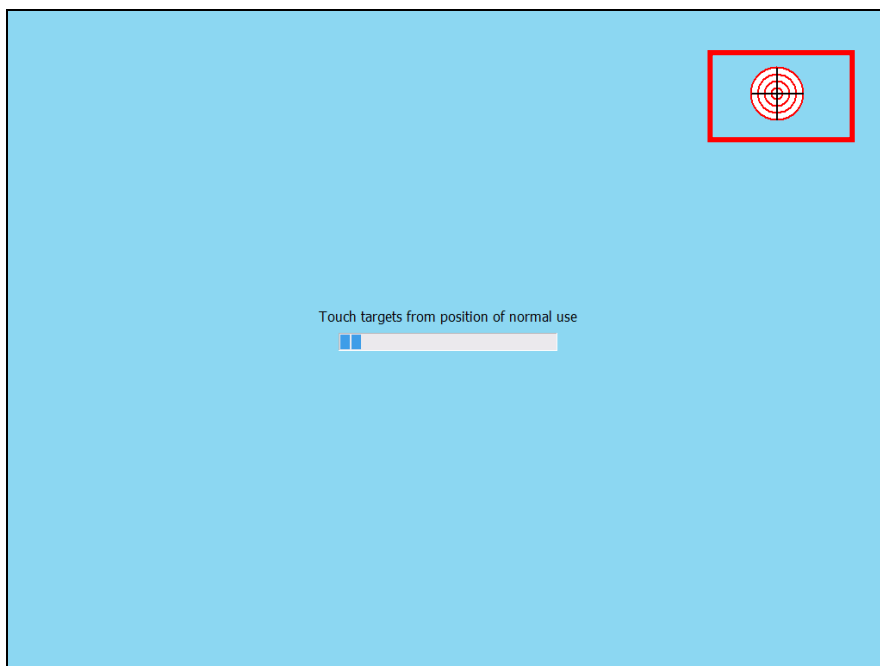
- 9) Calibration procedure will be started. Press the center of red circle more than 2 seconds.



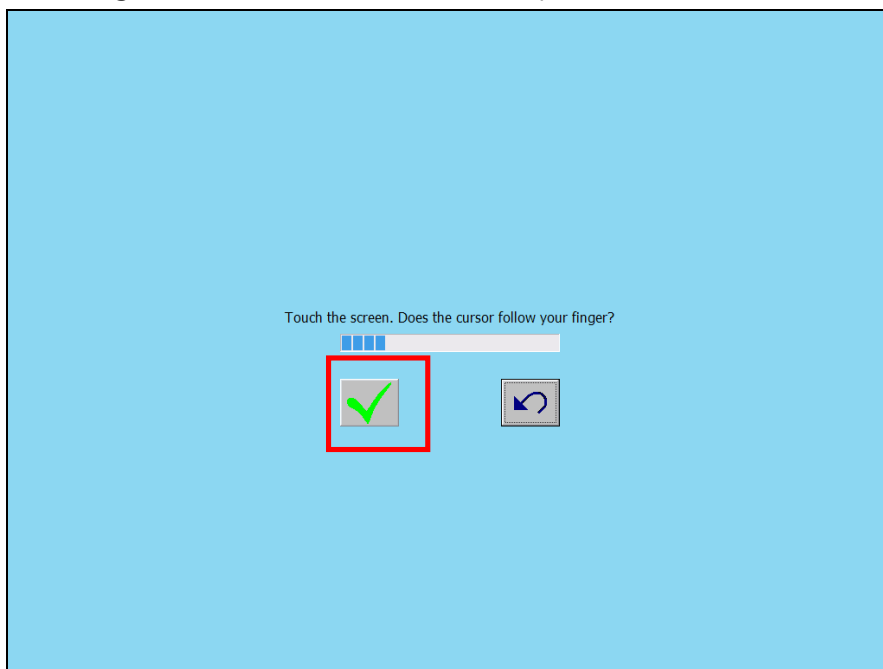
- 10) When the red circle appears in other area, press the center of red circle more than 2 seconds.



- 11) When the red circle appears in other area, press the center of red circle more than 2 seconds.

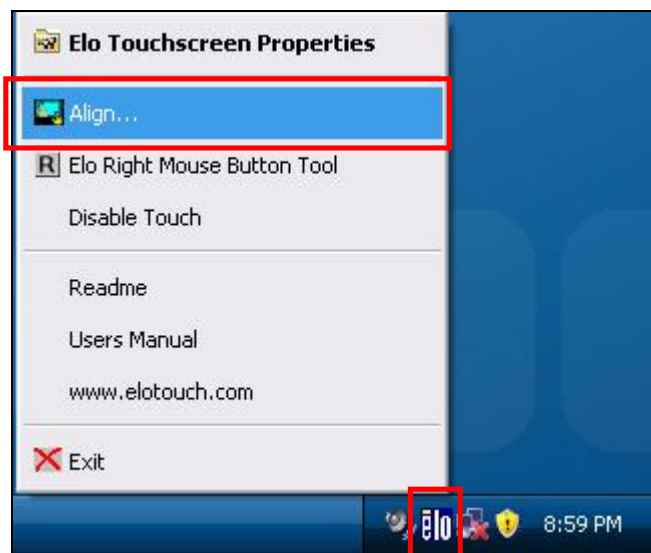


- 12) Click the green box to finish the calibration procedure.

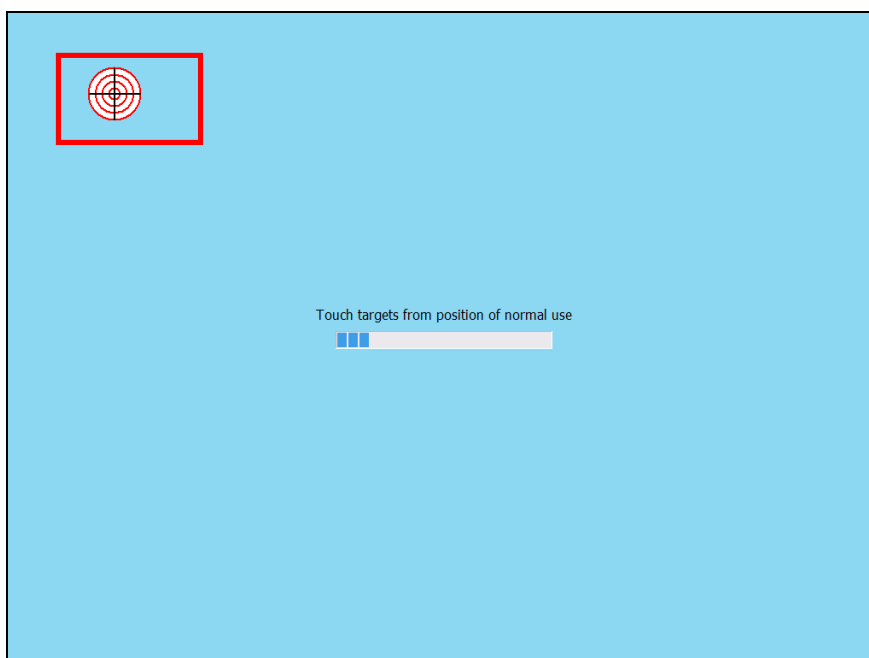


* Calibration of Touch Screen

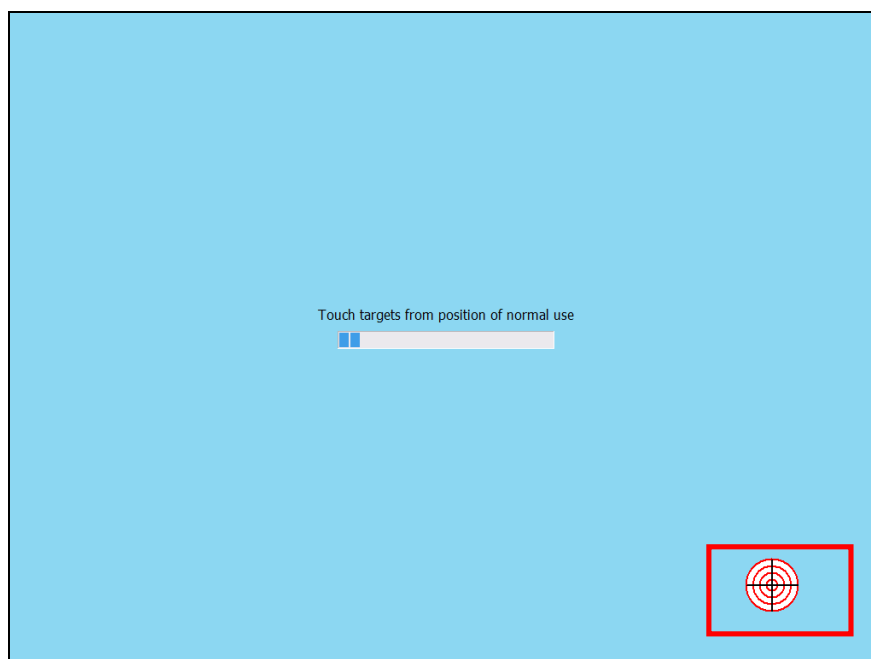
- 1) Click the 'elo icon' on tray area in Windows. And select 'Align...' menu.



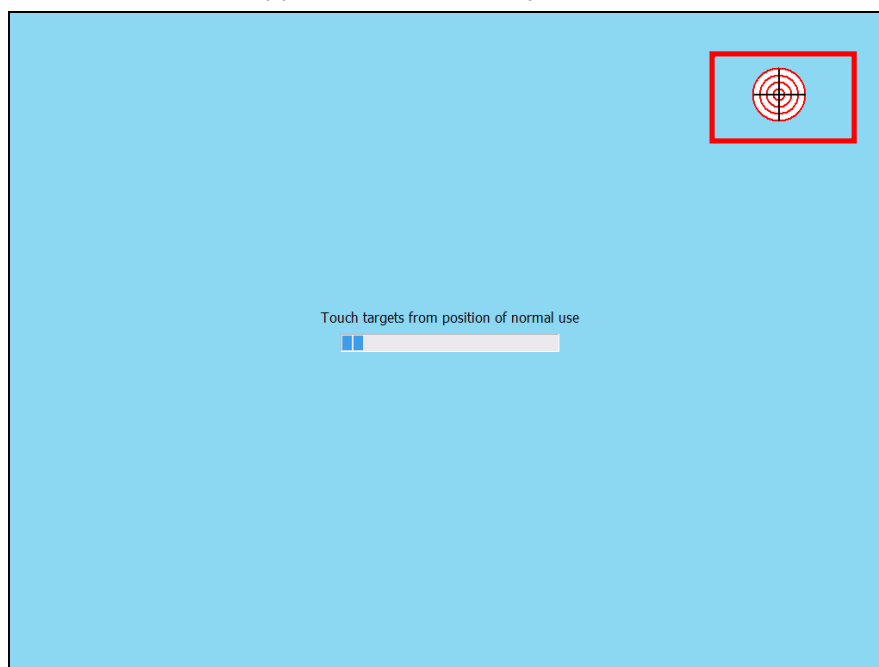
- 2) Calibration procedure will be started. Press the center of red circle more than 2 seconds.



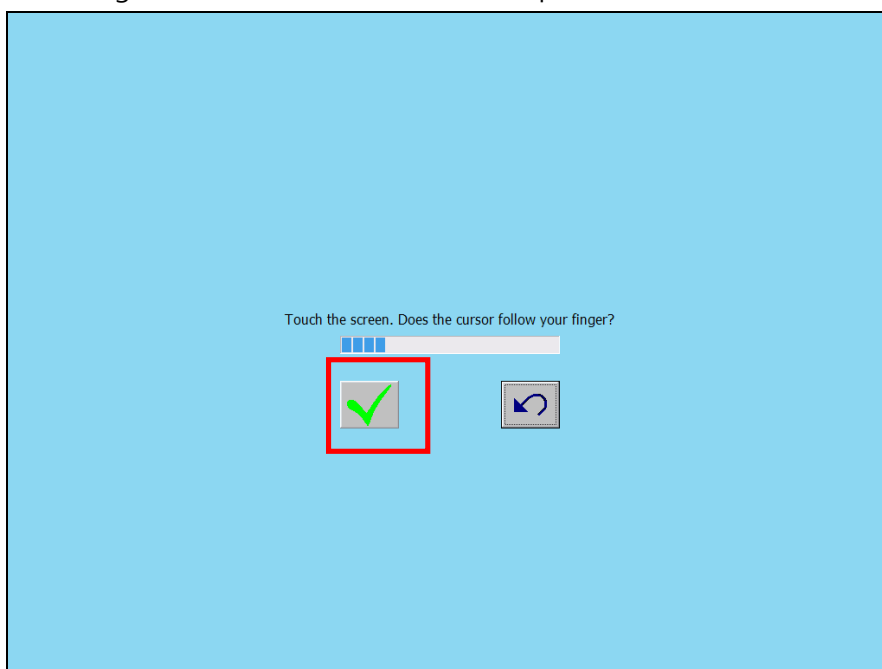
- 3) When the red circle appears in other area, press the center of red circle more than 2 seconds.



- 4) When the red circle appears in other area, press the center of red circle more than 2 seconds.



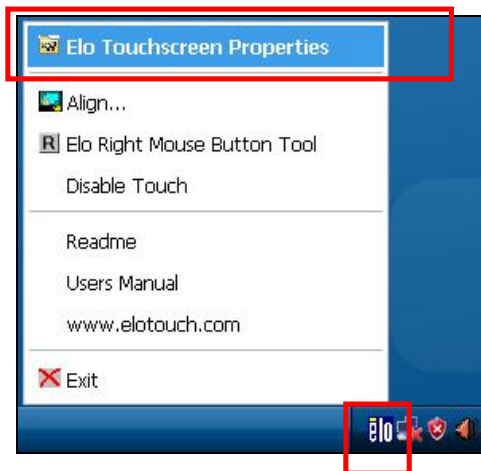
- 5) Click the green box to finish the calibration procedure.



* Using mouse right click function

If you press the same point on desktop more than 2 seconds, the pop-up will be displayed. It is similar function with right-click of mouse. Refer to below steps to select "using mouse right-click function".

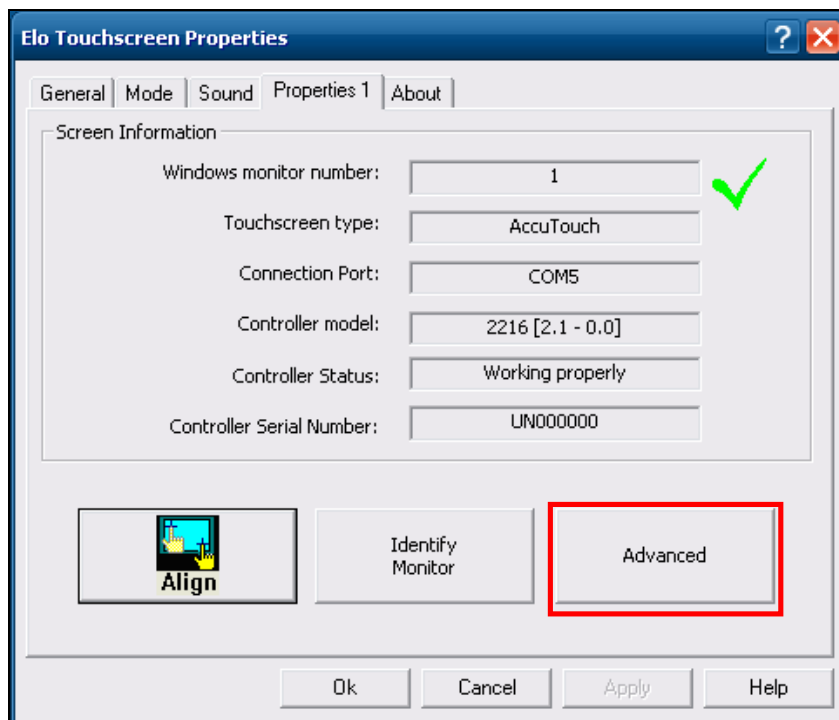
- 1) Click the '**elo icon**' on tray area in Windows. And select '**Elo Touchscreen Properties**' on the menu.



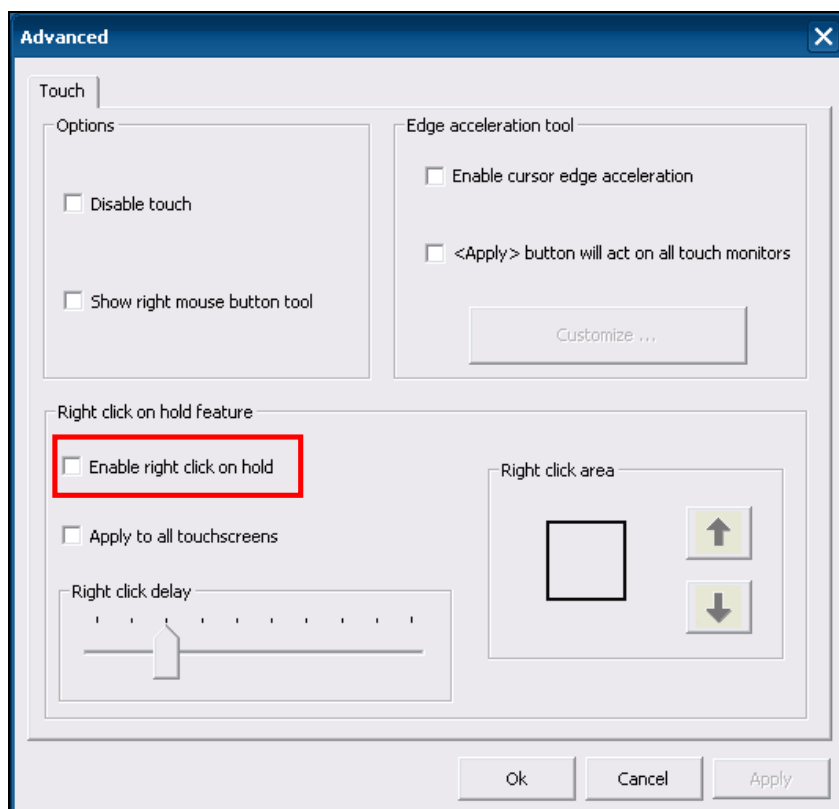
- 2) Select '**Properties 1**' tab.



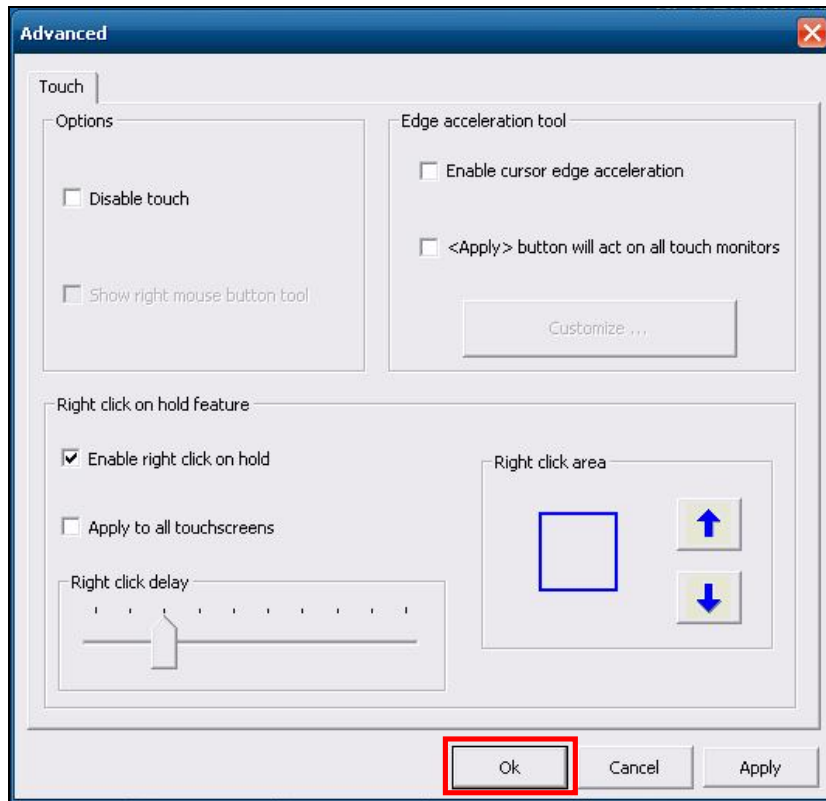
- 3) Click '**Advanced**' button.



- 4) Check the '**Enable right click on hold**' box.



- 5) Save the current change to click '**OK**' button.



- 6) Finish the dialog to click '**OK**' button.

